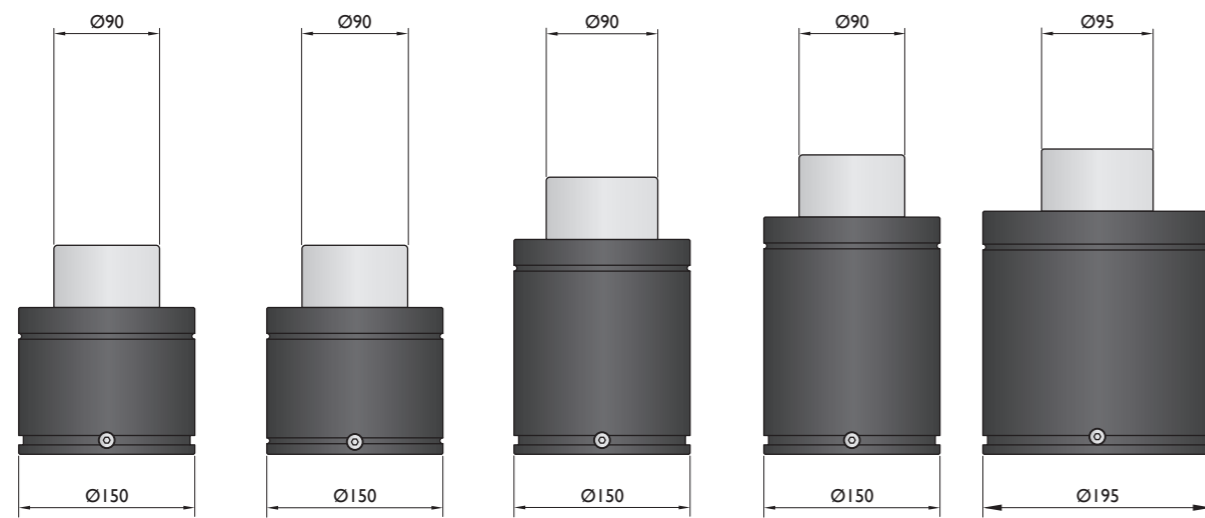
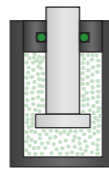


Force 10000 daN

Piston Rod Sealed gas springs

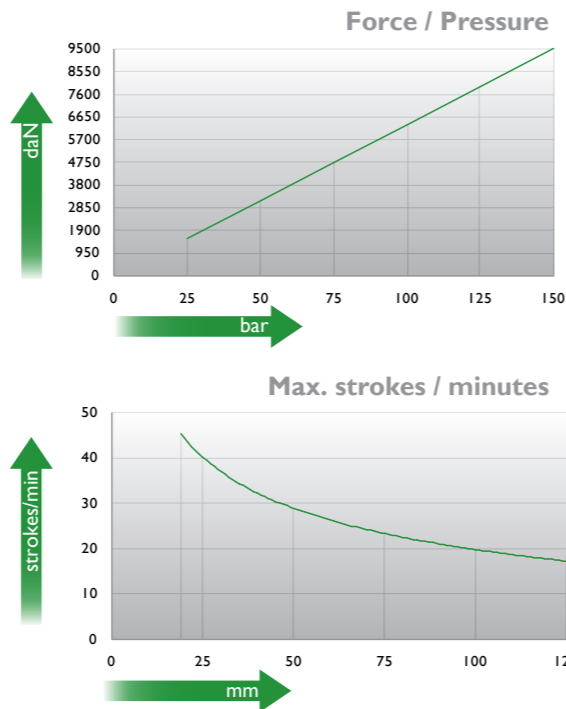
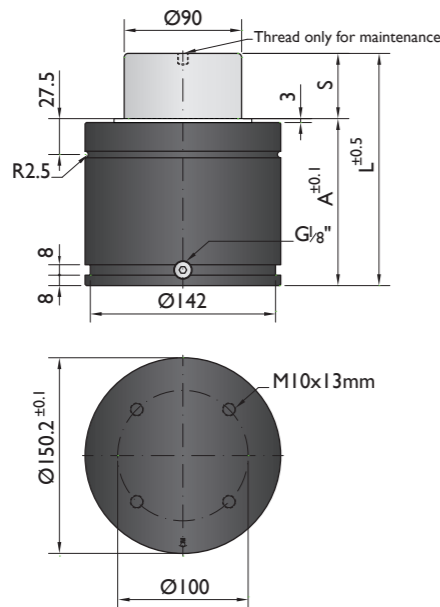


Model	KP-9500	NT-9500	G-10000	HD-9500	CN-10000
Initial F (daN)	9500	9500	9500	9500	10600
L max (mm)	2xStroke+78	2xStroke+78	2xStroke+136	2xStroke+155	2xStroke+160
Stroke (mm)	19-125	25-125	25-160	25-300	25-300

* other strokes under request

Standards

Model	KP-9500	NT-9500	G-10000	HD-9500	CN-10000
ISO	ISO 11901	ISO 11901	ISO 11901	ISO 11901	ISO 11901
VDI	VDI 3003	VDI 3003	VDI 3003	VDI 3003	VDI 3003
CNOMO	CNOMO EM24.54.700	CNOMO EM24.54.700	CNOMO EM24.54.700	CNOMO EM24.54.700	CNOMO EM24.54.700



Ordering example: 4 x KP-9500-125

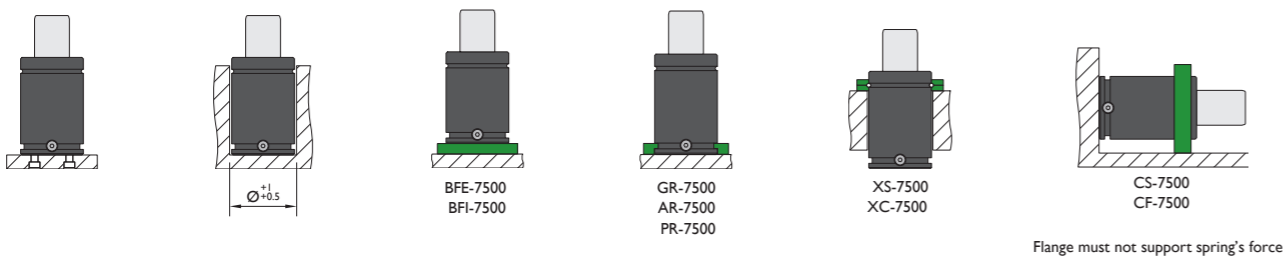
Order No.	S ⁽¹⁾ mm	L mm	A mm	F ₀ ⁽²⁾ daN	F daN	kg
KP-9500-19	19	116	97	9500	12800	9.90
KP-9500-25	25	128	103		13200	10.25
KP-9500-32	32	142	110		13600	11.03
KP-9500-38	38	154	116		13800	12.16
KP-9500-50	50	178	128		14200	13.77
KP-9500-63	63	204	141		17400	14.73
KP-9500-75	75	228	153		17300	15.63
KP-9500-80	80	238	158		17300	15.97
KP-9500-100	100	278	178		17200	16.53
KP-9500-125	125	328	203		17100	17.15

(1) other strokes under request (2) alternative forces upon request (3) ESK available for other strokes



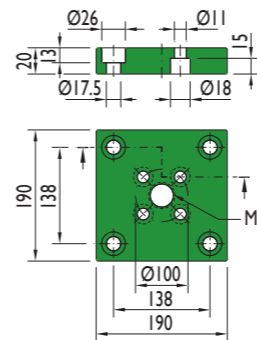
Pressure medium	N ₂	Working temperature	0-80°C	Min. security stroke	10%
Max. Charging pressure	150 bar	Temperature related force increase	+0.34%/°C	Repair Kit	KIT KP-9500
Min. Charging pressure	25 bar	Max. working speed	1.6 m/s	Linkable	G1/8"

Mounting possibilities

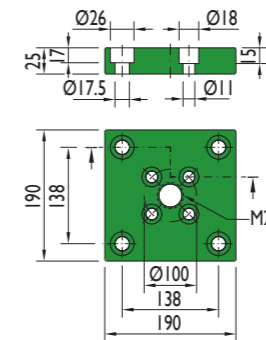


Flanges

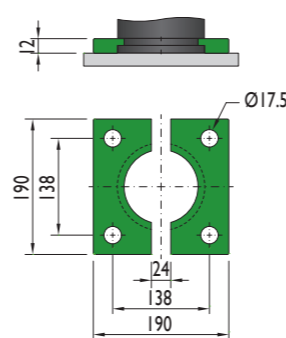
BFE-7500



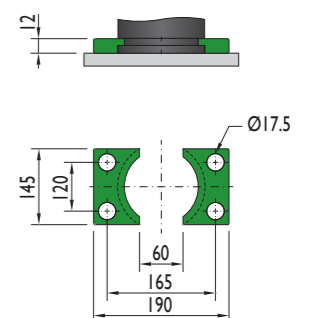
BFI-7500



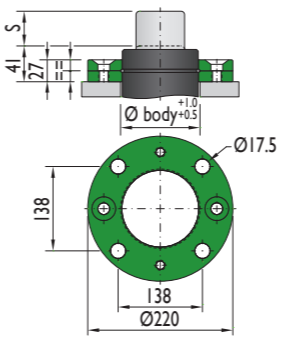
GR-7500



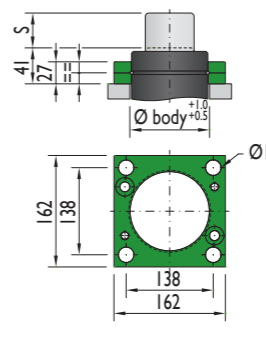
AR-7500



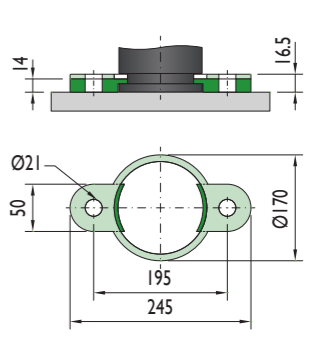
XS-7500



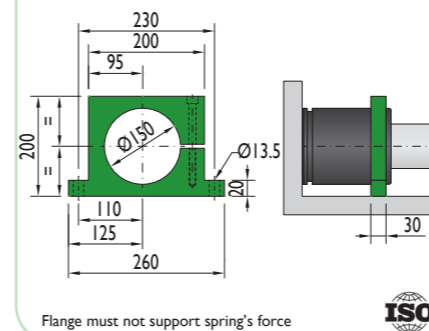
XC-7500



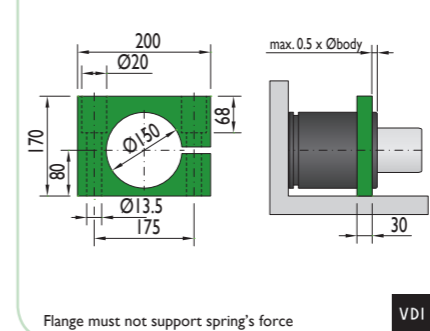
PR-7500

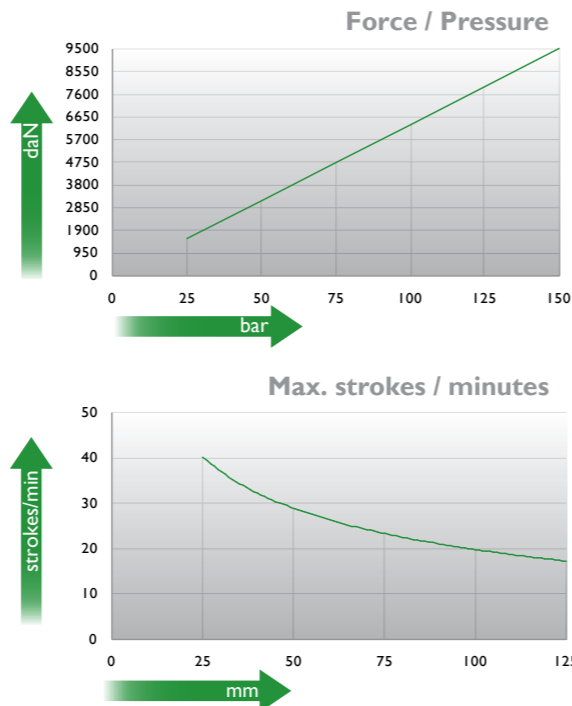
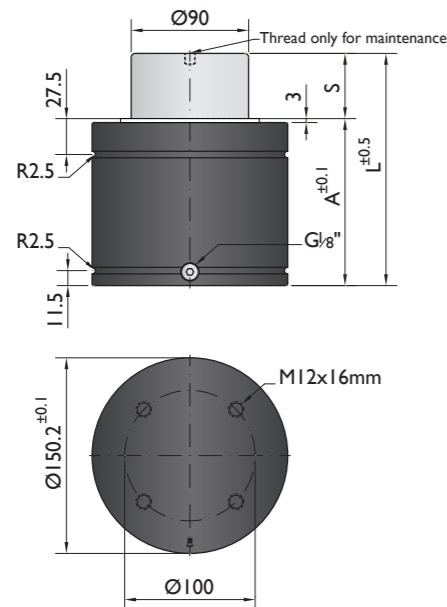


CS-7500



CF-7500





Ordering example: 4 x NT-9500-125

Order No.	S ⁽¹⁾ mm	L mm	A mm	F ₀ ⁽²⁾ daN	F daN	(3)	kg
NT-9500-25	25	128	103	9500 (20°C, 150 bar)	13200	No	11.60
NT-9500-32	32	142	110		13600	No	12.18
NT-9500-38	38	154	116		13800	No	12.67
NT-9500-50	50	178	128		14200	No	13.66
NT-9500-63	63	204	141		17400	Yes	14.73
NT-9500-75	75	228	153		17300	Yes	15.72
NT-9500-80	80	238	158		17300	Yes	14.14
NT-9500-100	100	278	178		17200	Yes	17.78
NT-9500-125	125	328	203		17100	Yes	19.85

other strokes ⁽¹⁾ under request

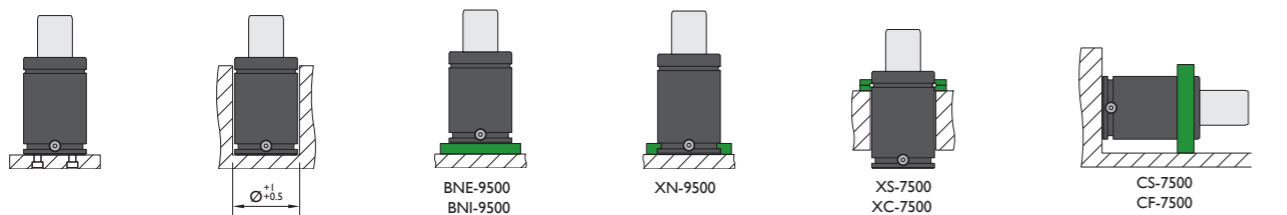
alternative forces upon request ⁽²⁾

ESK available for other strokes ⁽³⁾



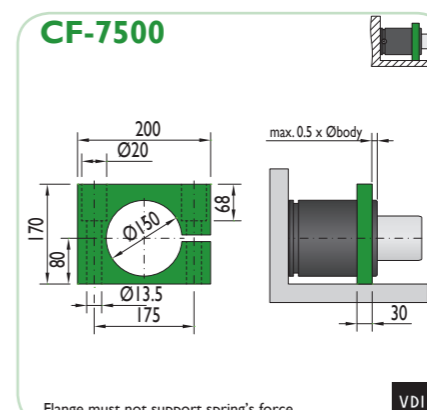
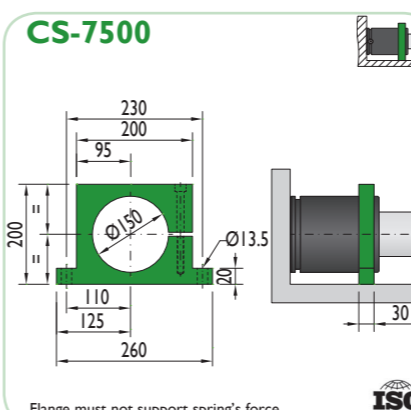
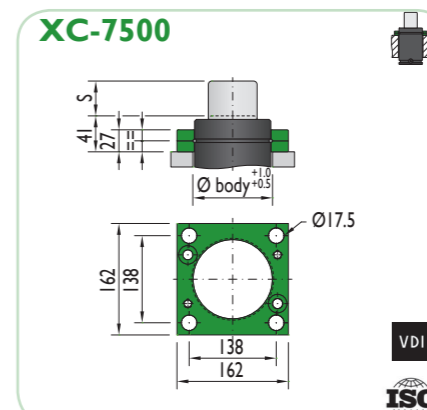
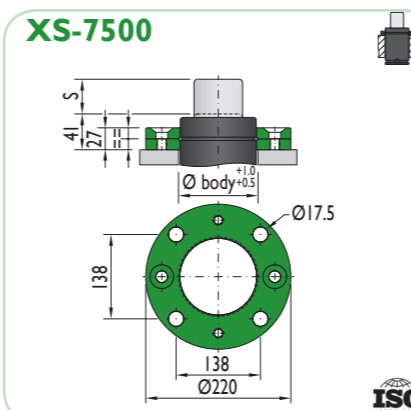
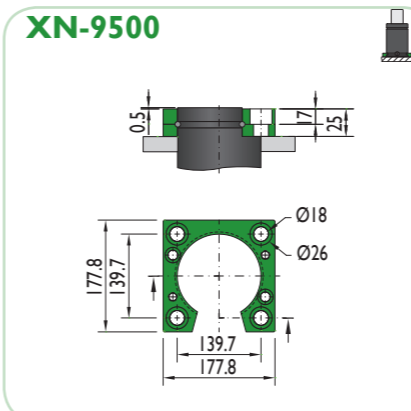
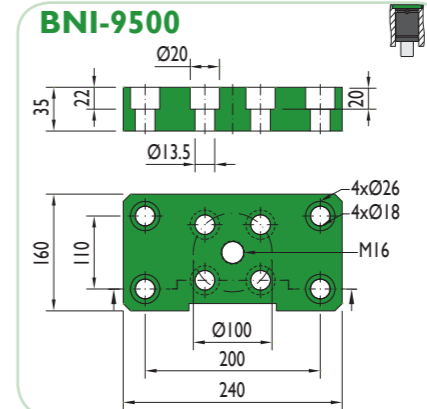
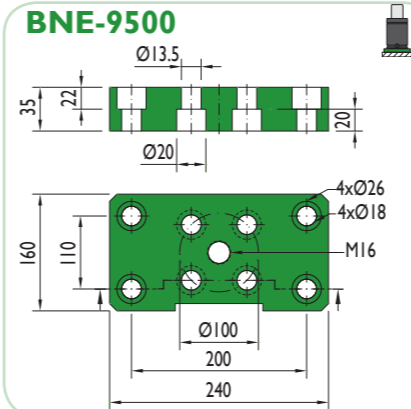
Pressure medium	N ₂	Working temperature	0-80°C	Min. security stroke	10%
Max. Charging pressure	150 bar	Temperature related force increase	+0.34%/°C	Repair Kit	KIT NT-9500
Min. Charging pressure	25 bar	Max. working speed	1.6 m/s	Linkable	G1/8"

Mounting possibilities



Flange must not support spring's force

Flanges

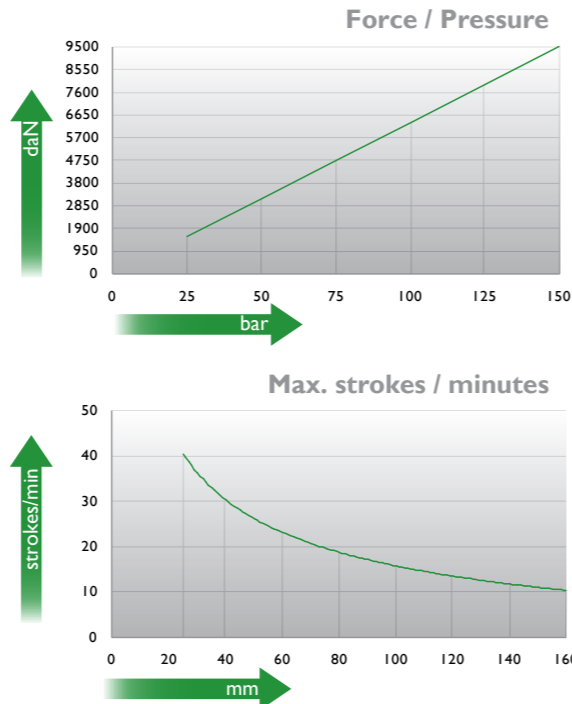
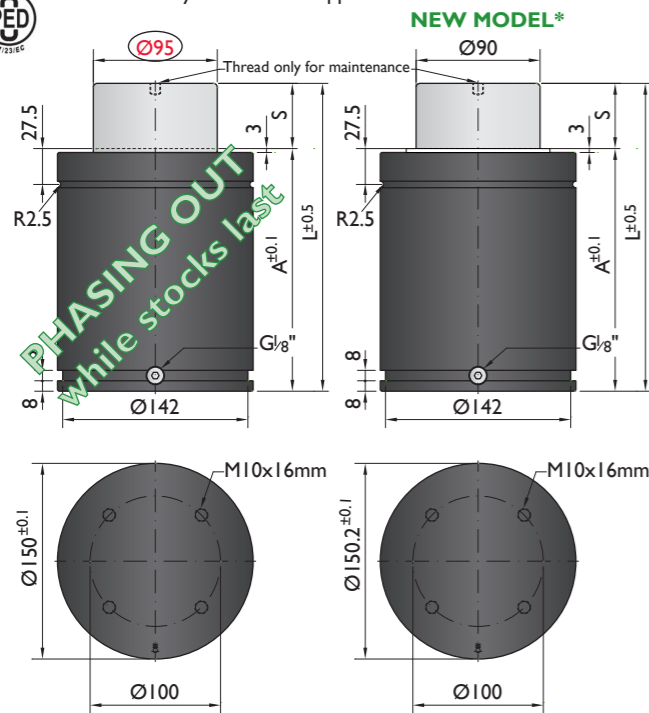


Flange must not support spring's force

Flange must not support spring's force



*The new cylinder will be supplied when the stock runs out.



Ordering example: 4 x G-10000-125

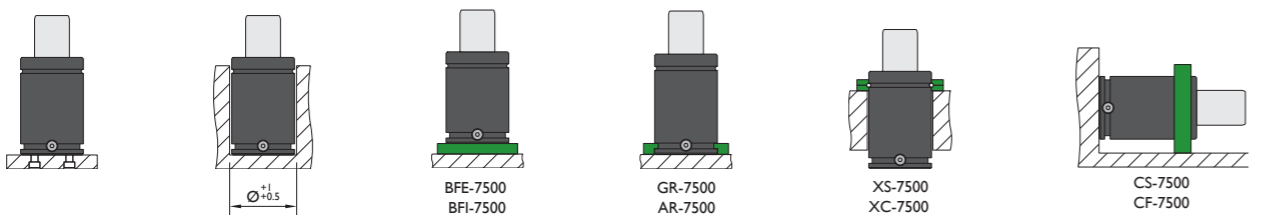
Order No.	S ⁽¹⁾ mm	L mm	A mm	F ₀ ⁽²⁾ daN (20°C, 150 bar)	F daN	(3)	kg
G-10000-25	25	186	161	9500	12400	No	16.63
G-10000-38	38	212	174		13100	No	17.48
G-10000-50	50	236	186		13550	No	18.28
G-10000-63	63	262	199		14000	No	19.15
G-10000-80	80	296	216		14230	No	20.28
G-10000-100	100	336	236		15200	Yes	22.55
G-10000-125	125	386	261		15400	Yes	24.22
G-10000-160	160	456	296		15500	Yes	26.55

⁽¹⁾ other strokes under request ⁽²⁾ alternative forces upon request ⁽³⁾ ESK available for other strokes



Pressure medium	N ₂	Working temperature	0-80°C	Min. security stroke	10%
Max. Charging pressure	150 bar	Temperature related force increase	+0.34%/°C	Repair Kit	KIT G-10000
Min. Charging pressure	25 bar	Max. working speed	1.6 m/s	Linkable	G1/8"

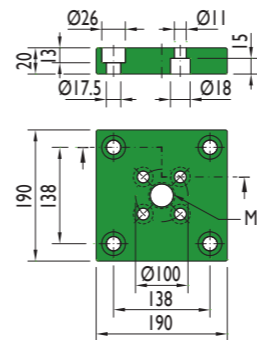
Mounting possibilities



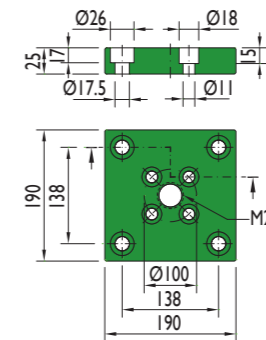
Flange must not support spring's force

Flanges

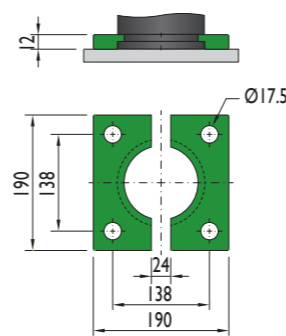
BFE-7500



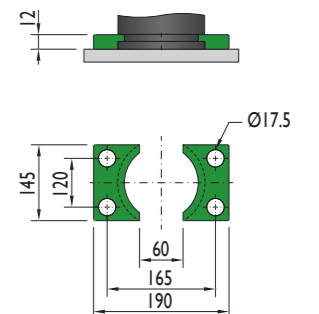
BFI-7500



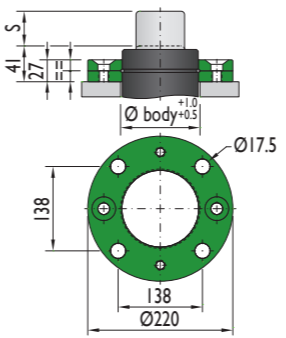
GR-7500



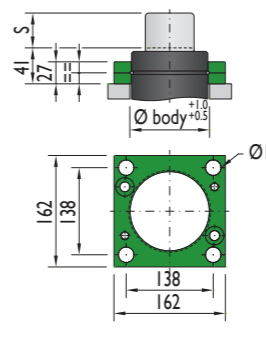
AR-7500



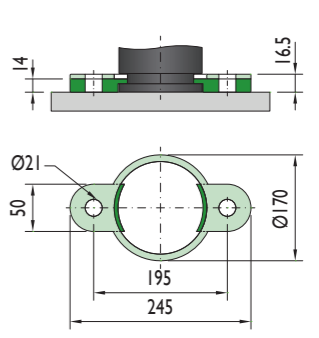
XS-7500



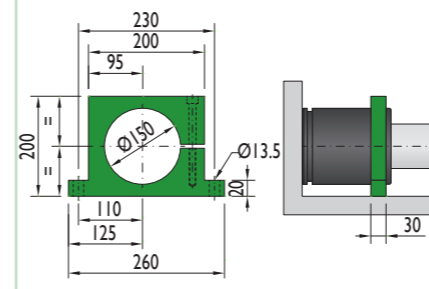
XC-7500



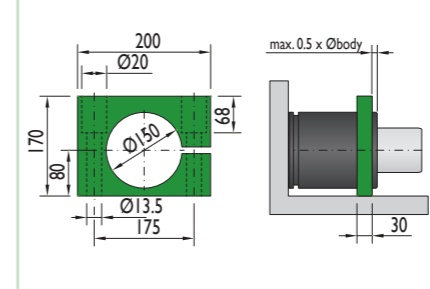
PR-7500



CS-7500

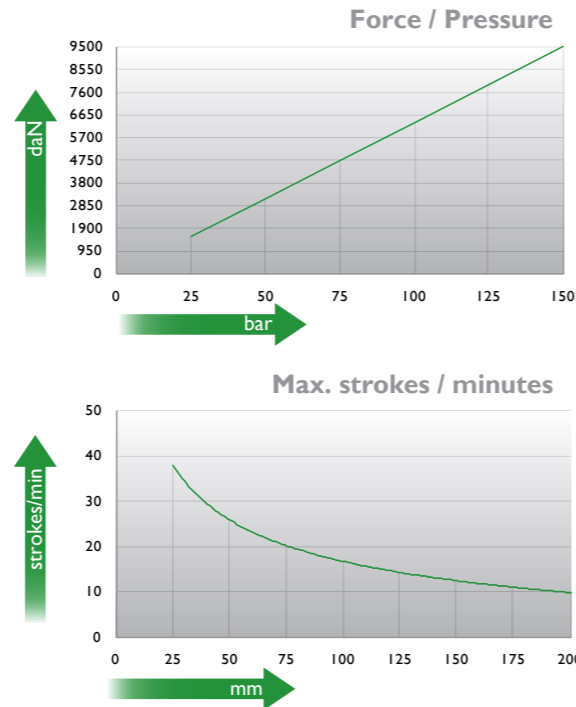
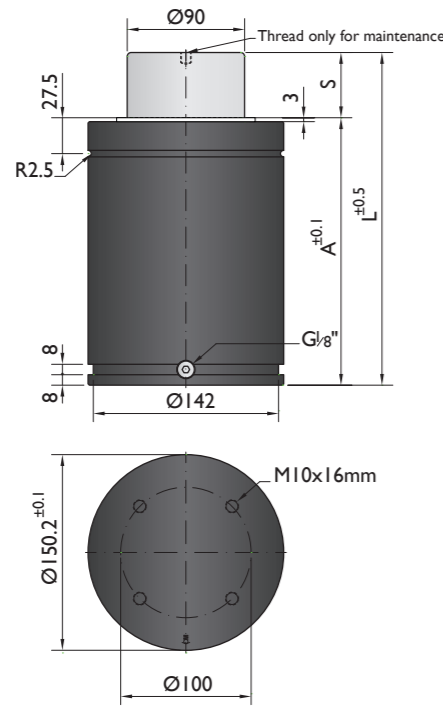


CF-7500



Flange must not support spring's force

Flange must not support spring's force



Ordering example: 4 x HD-9500-200

Order No.	S ⁽¹⁾ mm	L mm	A mm	F ₀ ⁽²⁾ daN	F daN	ESK ⁽³⁾	kg
HD-9500-25	25	205	180		11700	No	17.96
HD-9500-38	38	231	193		12400	No	18.95
HD-9500-50	50	255	205		12900	No	20.62
HD-9500-63	63	281	218		13300	No	21.60
HD-9500-80	80	315	235		13800	No	22.88
HD-9500-100	100	355	255	9500	15100	Yes	24.84
HD-9500-125	125	405	280		15400	Yes	26.74
HD-9500-160	160	475	315		15800	Yes	29.37
HD-9500-200	200	555	355		16000	Yes	32.38
HD-9500-250	250	655	405		16300	Yes	35.63
HD-9500-300	300	755	455		16500	Yes	38.87

⁽¹⁾ other strokes under request

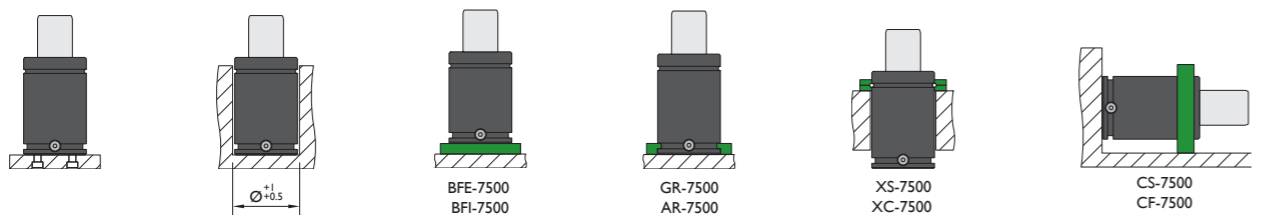
⁽²⁾ alternative forces upon request

⁽³⁾ ESK available for other strokes



Pressure medium	N ₂	Working temperature	0-80°C	Min. security stroke	10%
Max. Charging pressure	150 bar	Temperature related force increase	+0.34%/°C	Repair Kit	KIT HD-9500
Min. Charging pressure	25 bar	Max. working speed	1.6 m/s	Linkable	G1/8"

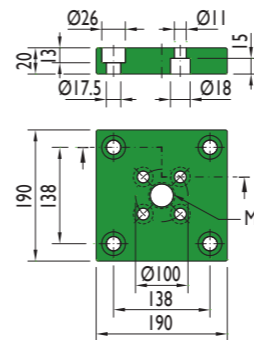
Mounting possibilities



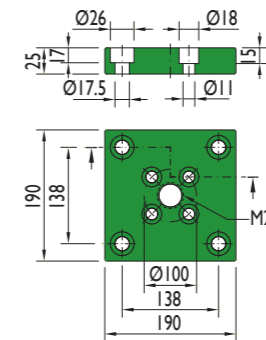
Flange must not support spring's force

Flanges

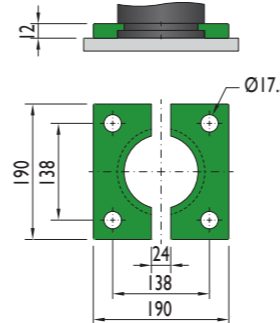
BFE-7500



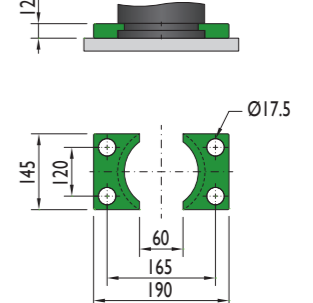
BFI-7500



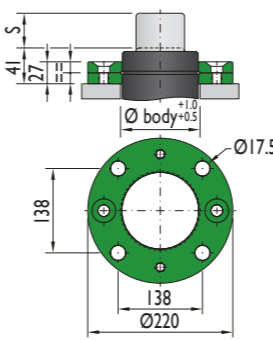
GR-7500



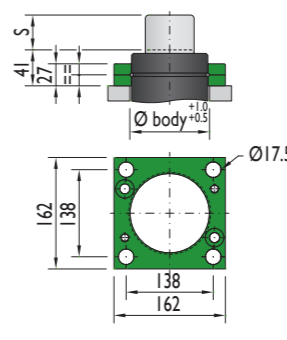
AR-7500



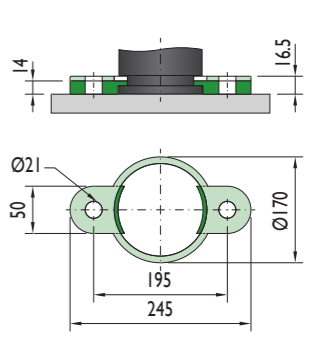
XS-7500



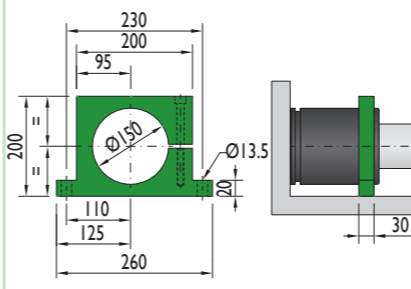
XC-7500



PR-7500

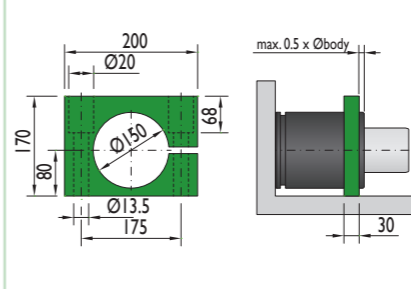


CS-7500



Flange must not support spring's force

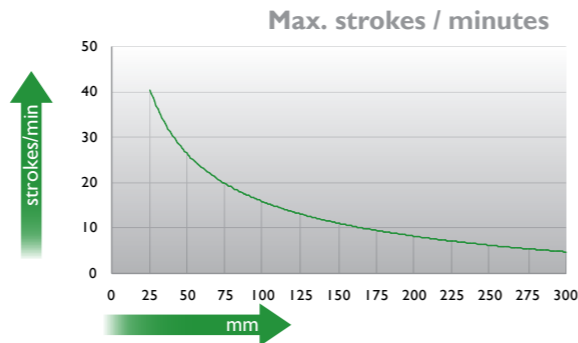
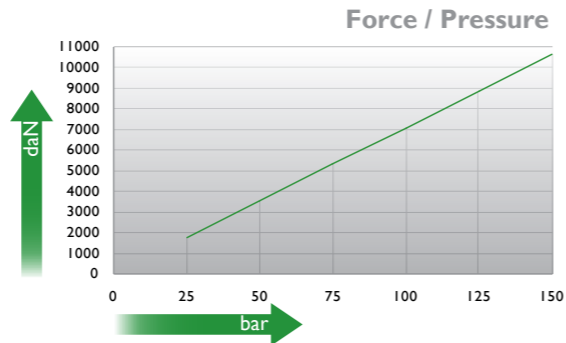
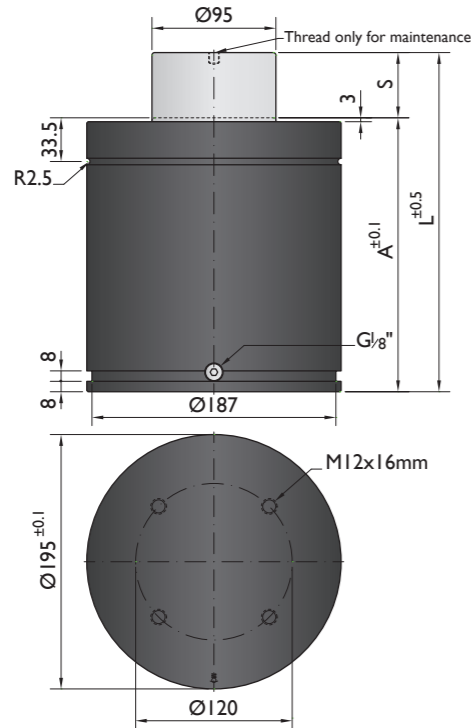
CF-7500



Flange must not support spring's force



CNOMO
EM24.54.700



Ordering example: 4 x CN-10000-200

Order No.	S ⁽¹⁾ mm	L mm	A mm	F ₀ ⁽²⁾ daN (20°C, 150 bar)	F daN	(3)	kg
CN-10000-25	25	210	185	10600	13000	No	32.40
CN-10000-38	38.1	236.2	198.1		13500	No	34.30
CN-10000-50	50	260	210		13800	No	36.20
CN-10000-63	63.5	287	223.5		14000	No	38.10
CN-10000-80	80	320	240		14200	No	40.70
CN-10000-100	100	360	260		14400	No	43.80
CN-10000-125	125	410	285		14800	Yes	47.60
CN-10000-160	160	480	320		14900	Yes	52.90
CN-10000-200	200	560	360		15200	Yes	59.10
CN-10000-250	250	660	410		15200	Yes	66.60
CN-10000-300	300	760	460	15200	Yes	74.20	

⁽¹⁾ other strokes under request

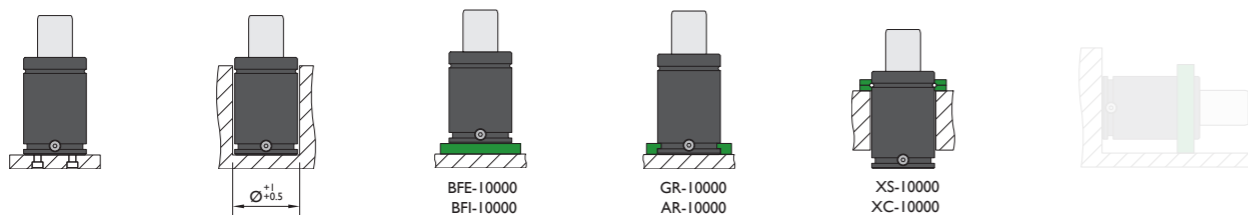
⁽²⁾ alternative forces upon request

⁽³⁾ ESK available for other strokes



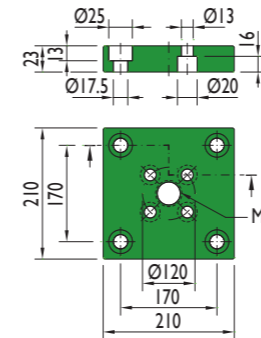
Pressure medium	N ₂	Working temperature	0-80°C	Min. security stroke	10%
Max. Charging pressure	150 bar	Temperature related force increase	+0.34%/°C	Repair Kit	KIT CN-10000
Min. Charging pressure	25 bar	Max. working speed	1.6 m/s	Linkable	G1/8"

Mounting possibilities

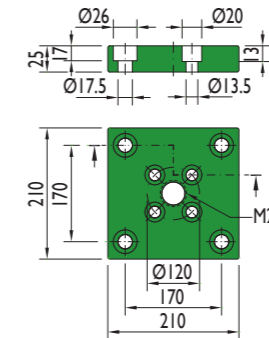


Flanges

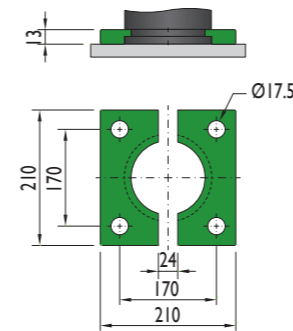
BFE-10000



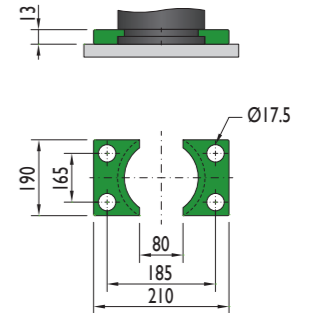
BFI-10000



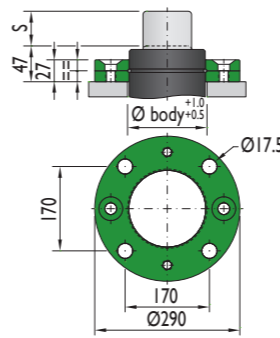
GR-10000



AR-10000



XS-10000



XC-10000

