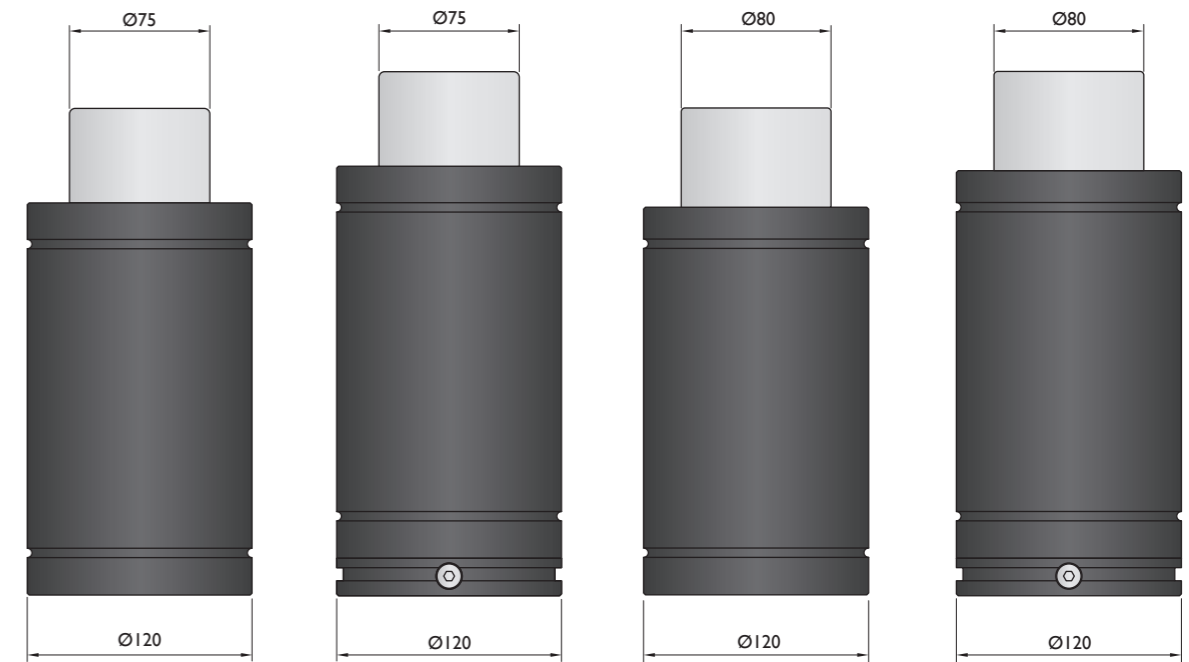
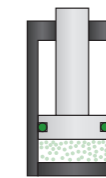


Force 1200 daN

Bore Sealed
gas springs

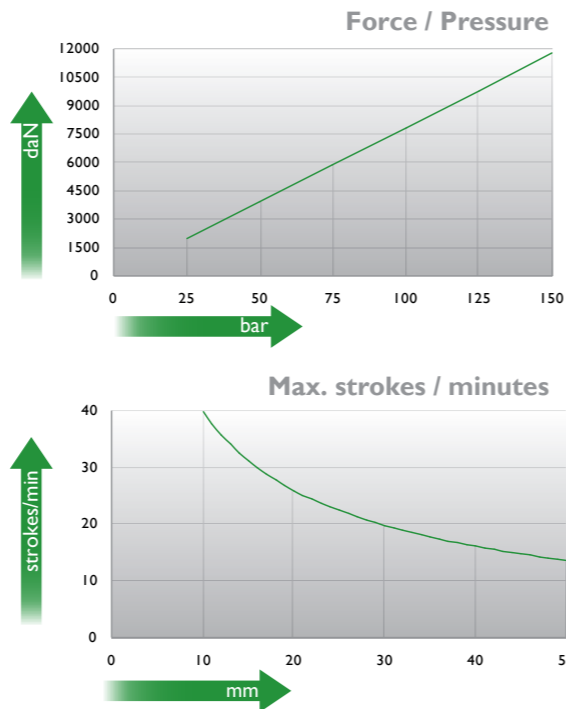
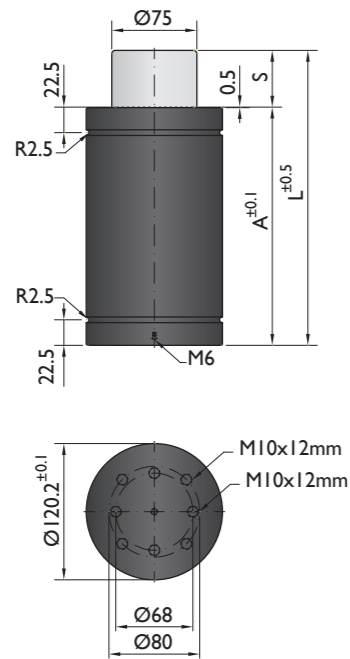


Model	T-11800	TC-11800	TS-11800	TSC-11800
Initial F (daN)	11800	11800	11800	11800
L max (mm)	100-260	120-280	100-320	120-340
Stroke (mm)	10-50	10-50	10-65	10-65

* other strokes under request

Standards

PED 97/23/EC	PED 97/23/EC	PED 97/23/EC	PED 97/23/EC
ISO 11901	ISO 11901	ISO 11901	ISO 11901
VDI 3003	VDI 3003	VDI 3003	VDI 3003
CNOMO EM24.54.700	CNOMO EM24.54.700	CNOMO EM24.54.700	CNOMO EM24.54.700



Ordering example: 4 x T-I 1800-50

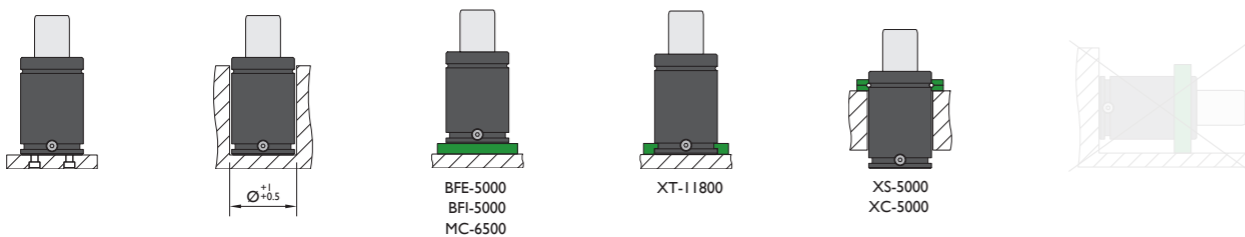
Order No.	S ⁽¹⁾ mm	L mm	A mm	F ₀ ⁽²⁾ daN (20°C, 150 bar)	F daN	ESK ⁽³⁾	kg
T-I 1800-10	10	100	90	11800	15500	No	4.60
T-I 1800-16	16	126	110		15700	No	5.74
T-I 1800-25	25	155	130		16600	No	6.48
T-I 1800-32	32	187	155		16600	No	7.30
T-I 1800-40	40	220	180		16600	No	8.14
T-I 1800-50	50	260	210		16600	No	9.16

(1) other strokes under request (2) alternative forces upon request (3) ESK under request



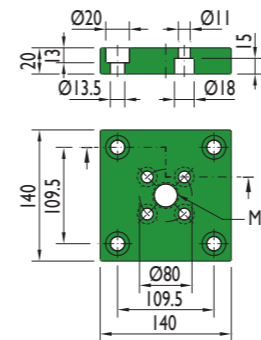
Pressure medium	N ₂	Working temperature	0-80°C	Min. security stroke	10%
Max. Charging pressure	150 bar	Temperature related force increase	+0.34%/°C	Repair Kit	KIT T-I 1800
Min. Charging pressure	25 bar	Max. working speed	0.5 m/s	Linkable	No

Mounting possibilities

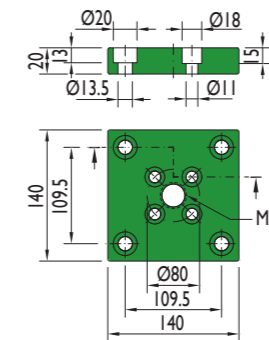


Flanges

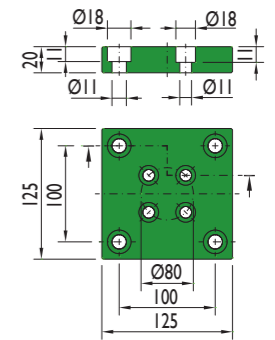
BFE-5000



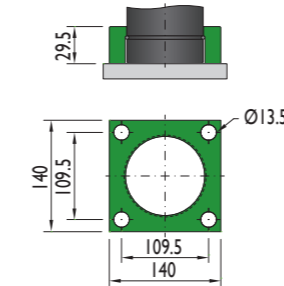
BFI-5000



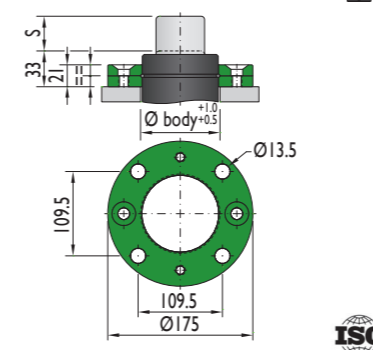
MC-6500



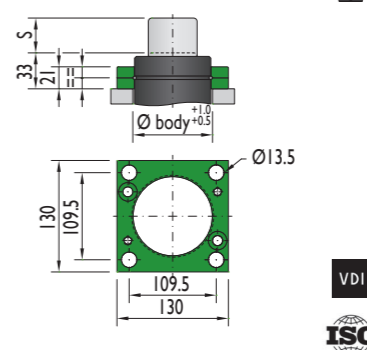
XT-I 1800

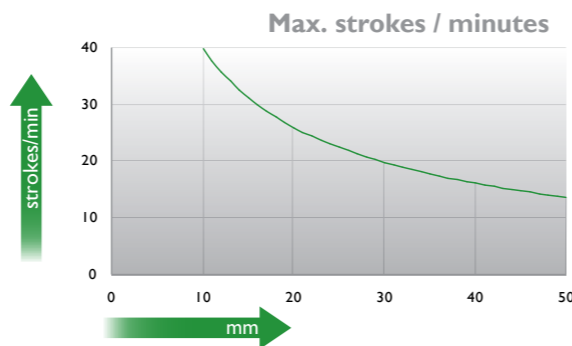
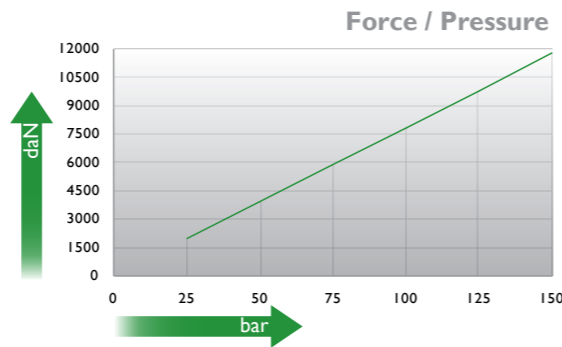
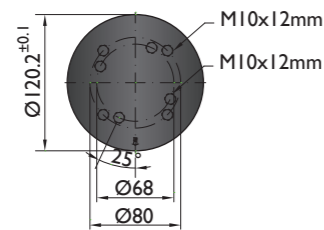
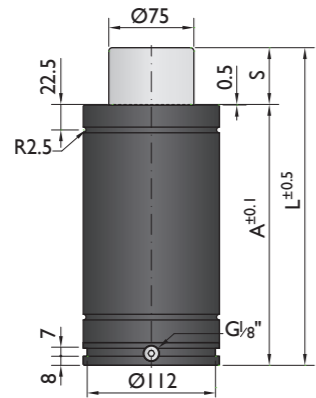


XS-5000



XC-5000





Ordering example: 4 x TC-11800-50

Order No.	S ⁽¹⁾ mm	L mm	A mm	F ₀ ⁽²⁾ daN (20°C, 150 bar)	F daN	(3)	kg
TC-11800-10	10	120	110	11800	15500	No	6.16
TC-11800-16	16	146	130		15700	No	7.30
TC-11800-25	25	175	150		16600	No	8.04
TC-11800-32	32	207	175		16600	No	8.80
TC-11800-40	40	240	200		16600	No	9.70
TC-11800-50	50	280	230		16600	No	10.72

other strokes⁽¹⁾ under request

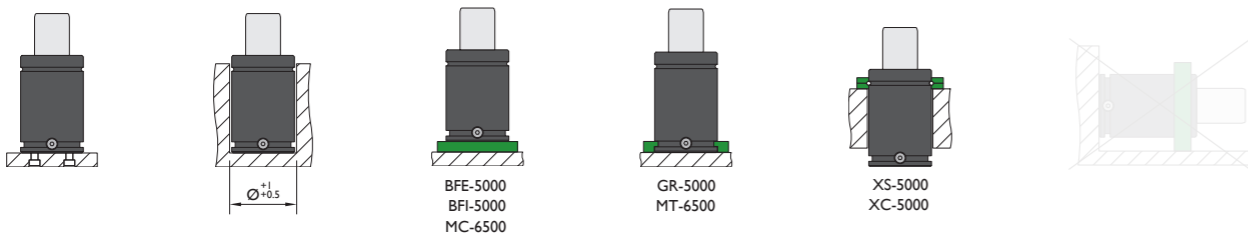
alternative forces⁽²⁾ upon request

ESK⁽³⁾ under request



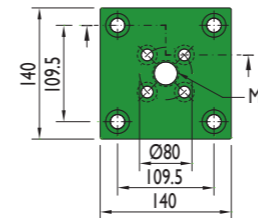
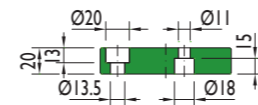
Pressure medium	N ₂	Working temperature	0-80°C	Min. security stroke	10%
Max. Charging pressure	150 bar	Temperature related force increase	+0.34%/°C	Repair Kit	KIT TC-11800
Min. Charging pressure	25 bar	Max. working speed	0.5 m/s	Linkable	G1/8"

Mounting possibilities

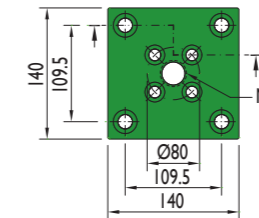
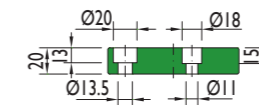


Flanges

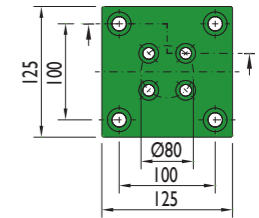
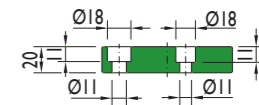
BFE-5000



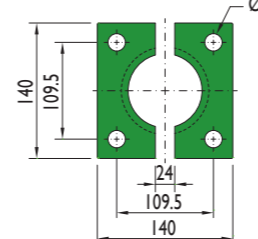
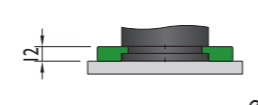
BFI-5000



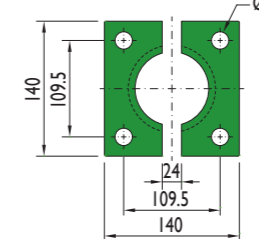
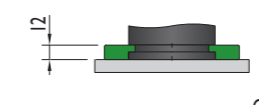
MC-6500



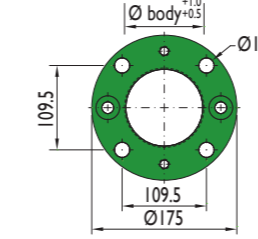
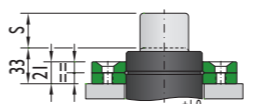
GR-5000



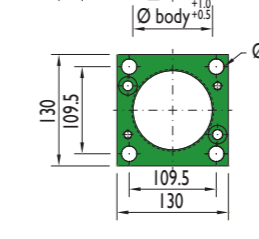
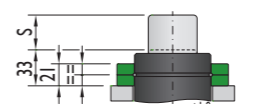
MT-6500

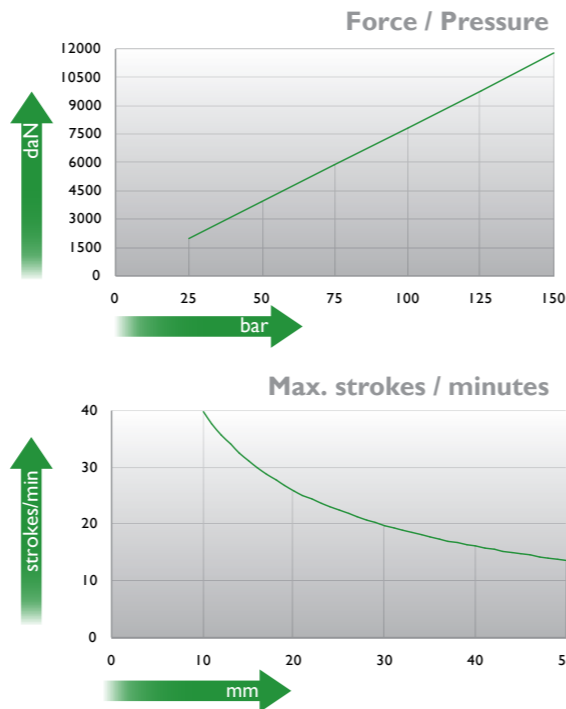
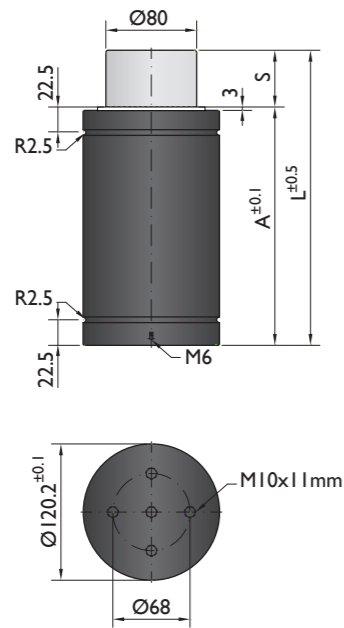


XS-5000



XC-5000





Ordering example: 4 x TS-11800-50

Order No.	S ⁽¹⁾ mm	L mm	A mm	F ₀ ⁽²⁾ daN	F daN	(3)	kg
TS-11800-10	10	100	90		15500	No	4.60
TS-11800-16	16	126	110		15700	No	5.74
TS-11800-25	25	155	130		16600	No	6.48
TS-11800-32	32	187	155	11800	16600	No	7.30
TS-11800-40	40	220	180		16600	No	8.14
TS-11800-50	50	260	210		16600	No	9.16
TS-11800-65	65	320	255		16600	No	10.14

⁽¹⁾ other strokes under request

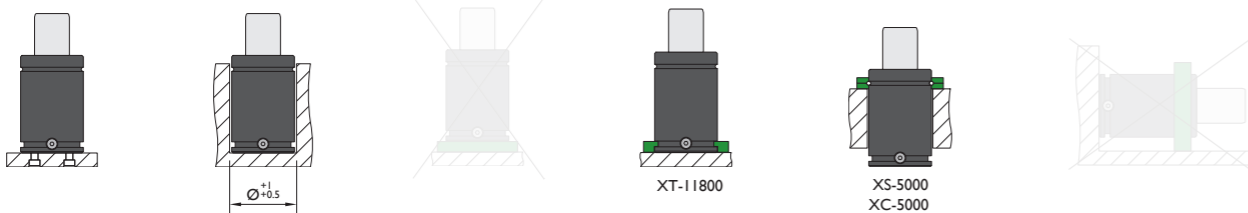
⁽²⁾ alternative forces upon request

⁽³⁾ ESK under request



Pressure medium	N ₂	Working temperature	0-80°C	Min. security stroke	10%
Max. Charging pressure	150 bar	Temperature related force increase	+0.34%/°C	Repair Kit	KIT TS-11800
Min. Charging pressure	25 bar	Max. working speed	0.5 m/s	Linkable	No

Mounting possibilities

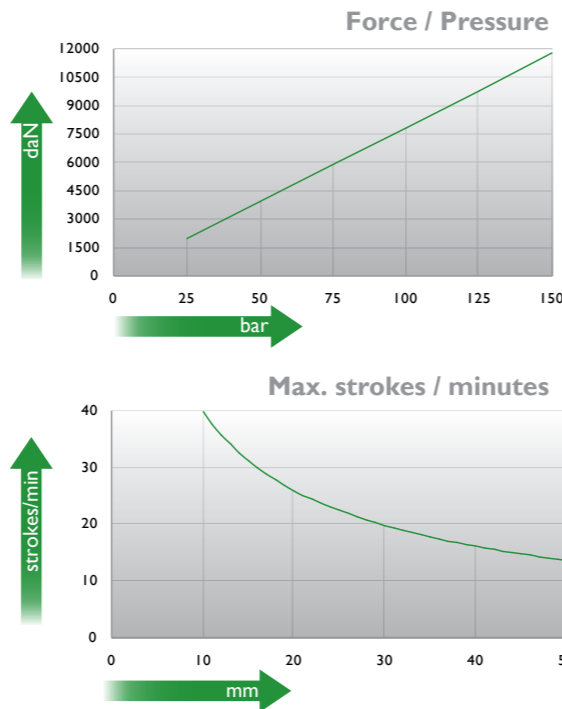
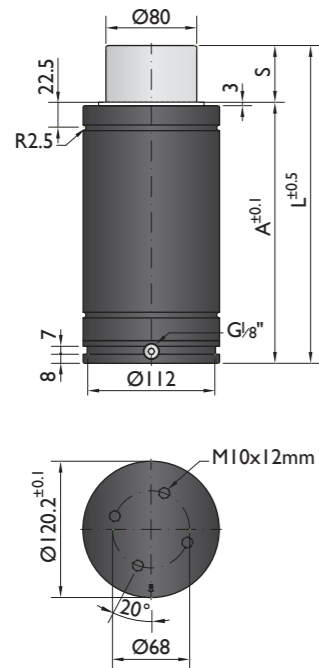


Flanges

XT-11800

XS-5000

XC-5000



Ordering example: 4 x TSC-I 1800-50

Order No.	S ⁽¹⁾ mm	L mm	A mm	F ₀ ⁽²⁾ daN	F daN	(3)	kg
TSC-I 1800-10	10	120	110		15500	No	6.16
TSC-I 1800-16	16	146	130		15700	No	7.30
TSC-I 1800-25	25	175	150		16600	No	8.04
TSC-I 1800-32	32	207	175	11800	16600	No	8.80
TSC-I 1800-40	40	240	200		16600	No	9.70
TSC-I 1800-50	50	280	230		16600	No	10.72
TSC-I 1800-65	65	340	275		16600	No	11.70

⁽¹⁾ other strokes under request

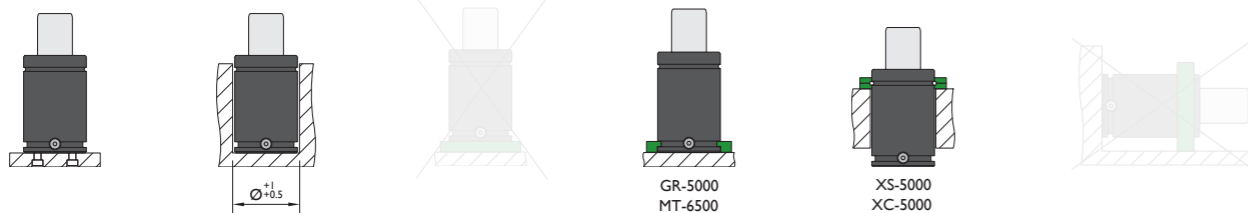
⁽²⁾ alternative forces upon request

⁽³⁾ ESK under request



Pressure medium	N ₂	Working temperature	0-80°C	Min. security stroke	10%
Max. Charging pressure	150 bar	Temperature related force increase	+0.34%/°C	Repair Kit	KIT TSC-I 1800
Min. Charging pressure	25 bar	Max. working speed	0.5 m/s	Linkable	G1/8"

Mounting possibilities



Flanges

GR-5000	MT-6500	
XS-5000	XC-5000	