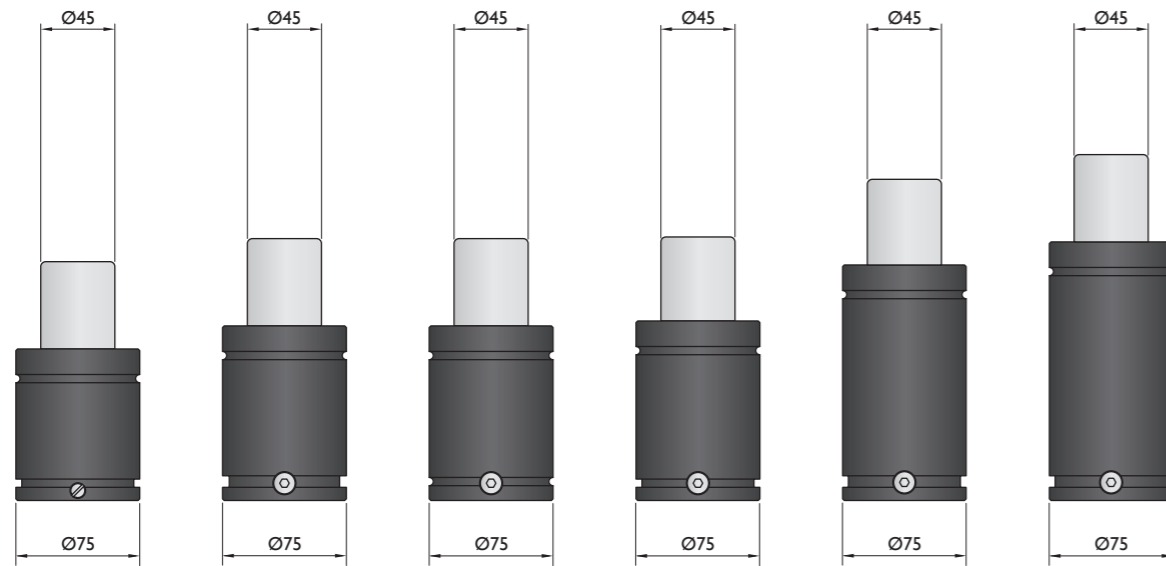
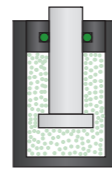


## Force 2500 daN

Piston Rod Sealed  
gas springs



Model	KP-2400	NR-2400	NT-2400	K-2500	M-2500	HD-2400
Initial F (daN)	2400	2400	2400	2500	2500	2400
L max (mm)	2xStroke+45	2xStroke+59	2xStroke+59	2xStroke+60	2xStroke+95	2xStroke+110
Stroke (mm)	16-125	16-125	16-125	12-125	25-160	25-300

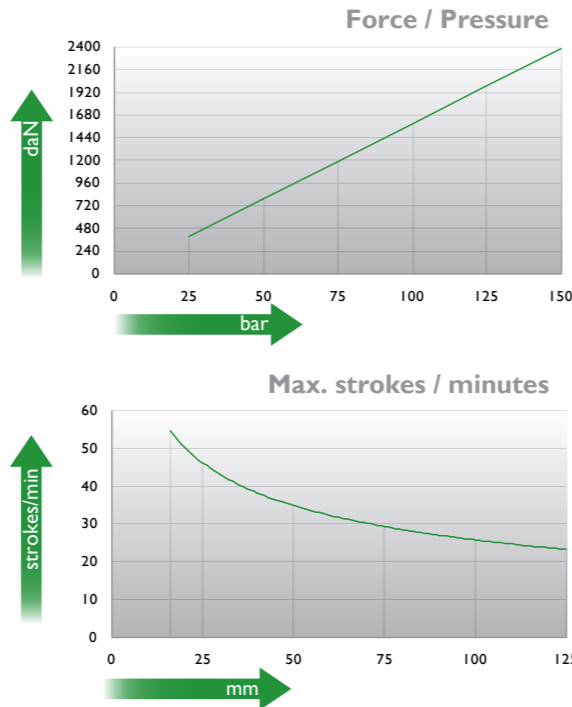
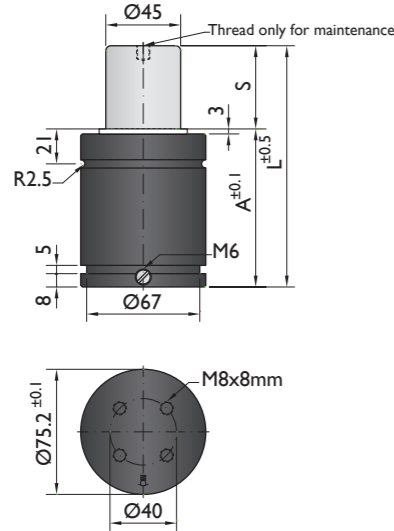
\* other strokes under request

Standards

PED 97/23/EC	PED 97/23/EC	PED 97/23/EC	PED 97/23/EC	PED 97/23/EC	PED 97/23/EC
ISO 11901	ISO 11901	ISO 11901	ISO 11901	ISO 11901	ISO 11901
VDI 3003	VDI 3003	VDI 3003	VDI 3003	VDI 3003	VDI 3003
CNOMO EM24.54.700	CNOMO EM24.54.700	CNOMO EM24.54.700	CNOMO EM24.54.700	CNOMO EM24.54.700	CNOMO EM24.54.700



PSA  
E24.54.815.G



Ordering example: 4 x KP-2400-50

Order No.	S <sup>(1)</sup> mm	L mm	A mm	F <sub>0</sub> <sup>(2)</sup> daN (20°C, 150 bar)	F daN	(3)	kg
KP-2400-16	16	77	61		3700	No	1.54
KP-2400-19	19	83	64		3800	No	1.57
KP-2400-25	25	95	70		3900	No	1.59
KP-2400-32	32	109	77		4000	No	1.87
KP-2400-38	38	121	83		4000	No	1.94
KP-2400-50	50	145	95	2400	4300	Yes	2.25
KP-2400-63	63	171	108		4300	Yes	2.52
KP-2400-75	75	195	120		4100	Yes	2.68
KP-2400-80	80	205	125		4100	Yes	2.75
KP-2400-100	100	245	145		4100	Yes	3.06
KP-2400-125	125	295	170		4100	Yes	3.31

(1) other strokes under request

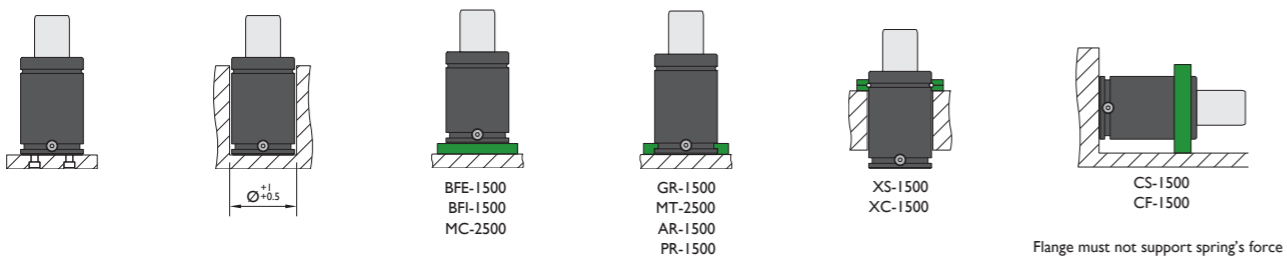
(2) alternative forces upon request

(3) ESK available for other strokes



Pressure medium	N <sub>2</sub>	Working temperature	0-80°C	Min. security stroke	10%
Max. Charging pressure	150 bar	Temperature related force increase	+0.34%/°C	Repair Kit	KIT KP-2400
Min. Charging pressure	25 bar	Max. working speed	1.6 m/s	Linkable	M6

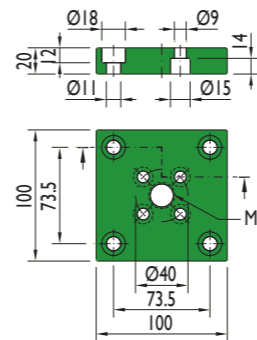
### Mounting possibilities



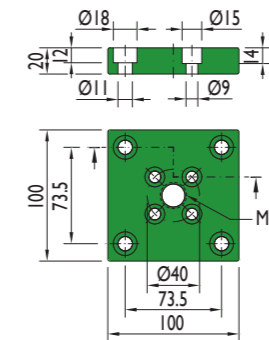
Flange must not support spring's force

## Flanges

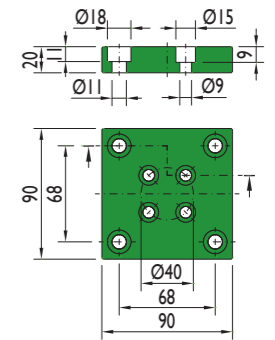
### BFE-1500



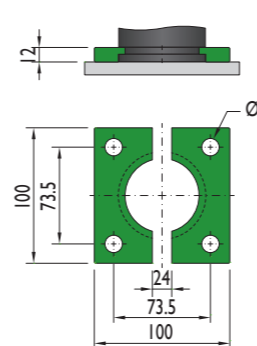
### BFI-1500



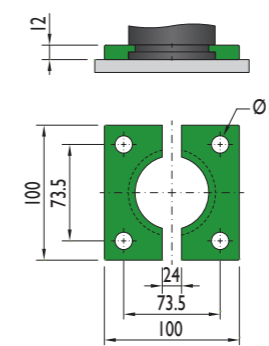
### MC-2500



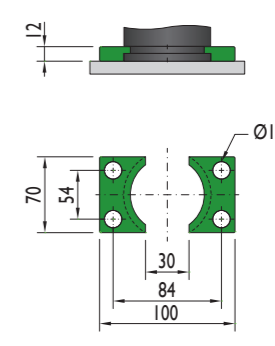
### GR-1500



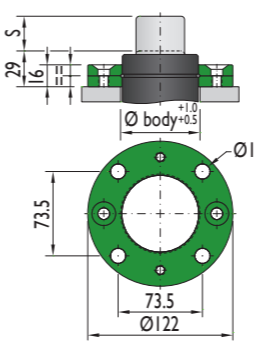
### MT-2500



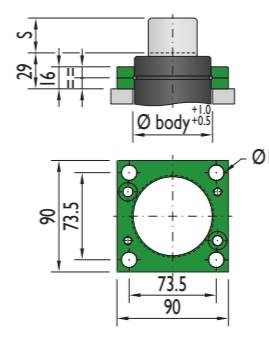
### AR-1500



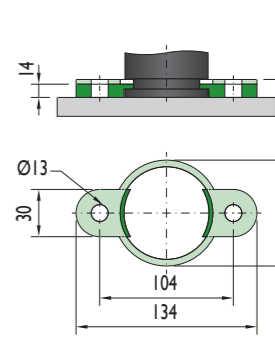
### XS-1500



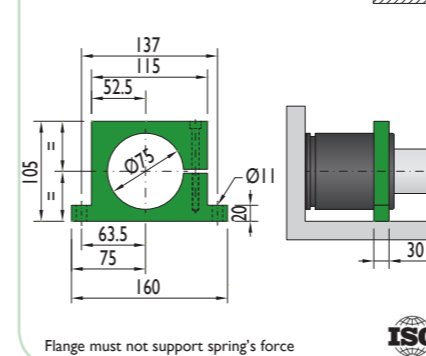
### XC-1500



### PR-1500

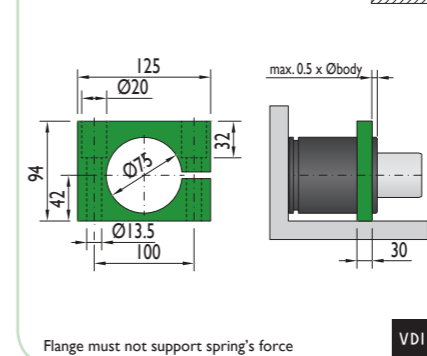


### CS-1500

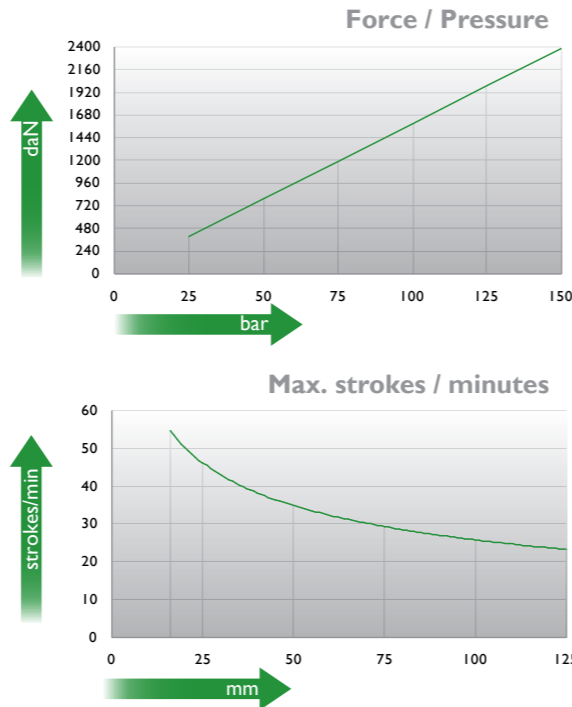
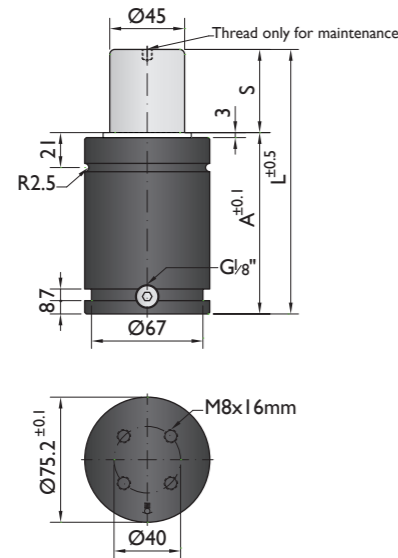


Flange must not support spring's force

### CF-1500



Flange must not support spring's force



Ordering example: 4 x NR-2400-50

Order No.	S <sup>(1)</sup> mm	L mm	A mm	F <sub>0</sub> <sup>(2)</sup> daN	F daN	(3)	kg
NR-2400-16	16	91	75		3700	No	2.01
NR-2400-19	19	97	78		3800	No	2.06
NR-2400-25	25	109	84		3900	No	2.17
NR-2400-32	32	123	91		4000	No	2.30
NR-2400-38	38	135	97		4000	No	2.41
NR-2400-50	50	159	109	2400	4300	Yes	2.63
NR-2400-63	63	185	122		4300	Yes	2.86
NR-2400-75	75	209	134		4100	Yes	3.09
NR-2400-80	80	219	139		4100	Yes	3.15
NR-2400-100	100	259	159		4100	Yes	3.54
NR-2400-125	125	309	184		4100	Yes	4.05

<sup>(1)</sup> other strokes under request

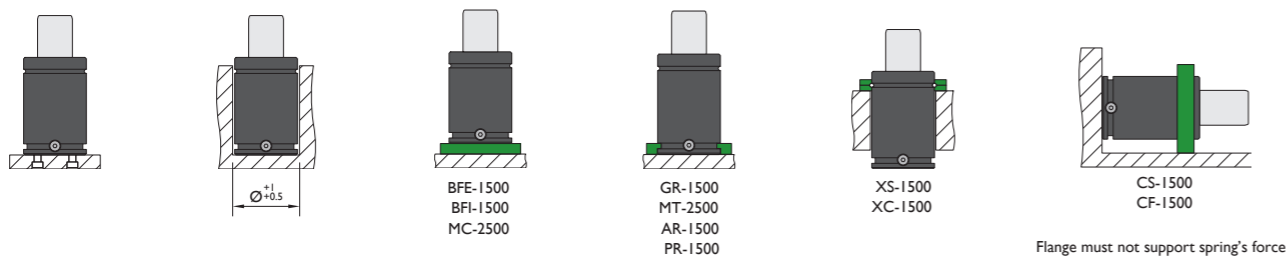
<sup>(2)</sup> alternative forces upon request

<sup>(3)</sup> ESK available for other strokes



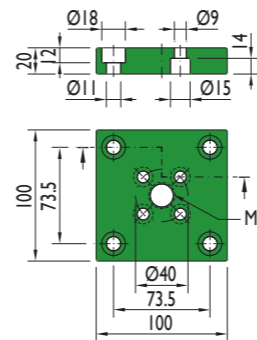
Pressure medium	N <sub>2</sub>	Working temperature	0-80°C	Min. security stroke	10%
Max. Charging pressure	150 bar	Temperature related force increase	+0.34%/°C	Repair Kit	KIT NR-2400
Min. Charging pressure	25 bar	Max. working speed	1.6 m/s	Linkable	G1/8"

### Mounting possibilities

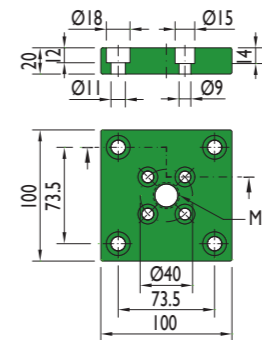


## Flanges

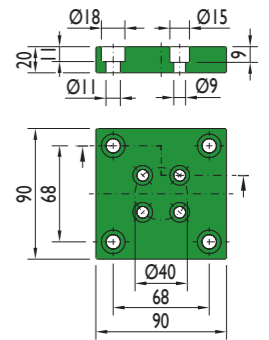
### BFE-1500



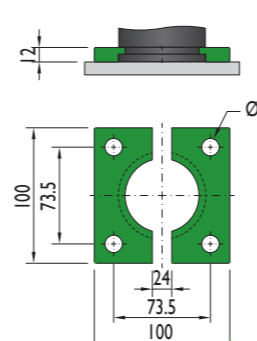
### BFI-1500



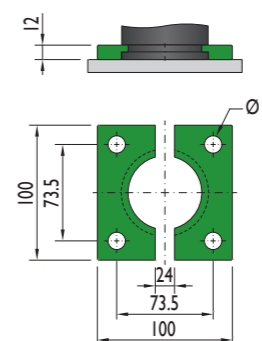
### MC-2500



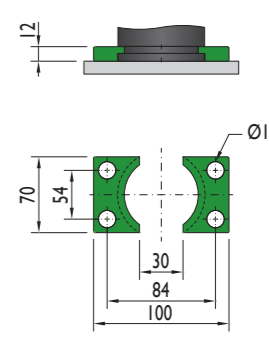
### GR-1500



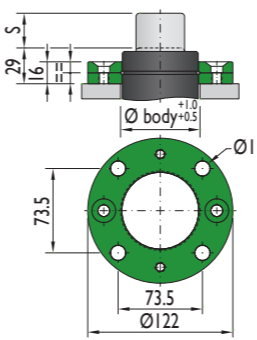
### MT-2500



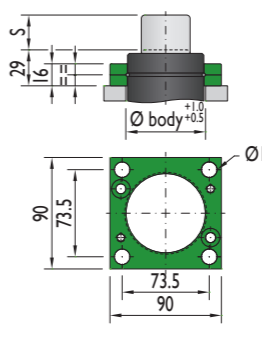
### AR-1500



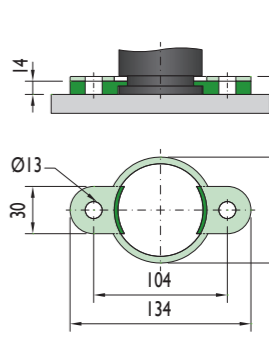
### XS-1500



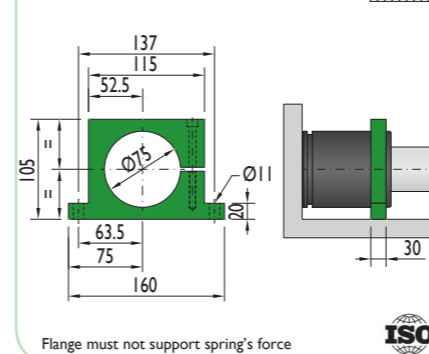
### XC-1500



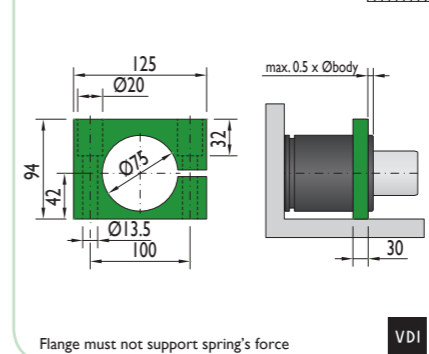
### PR-1500



### CS-1500



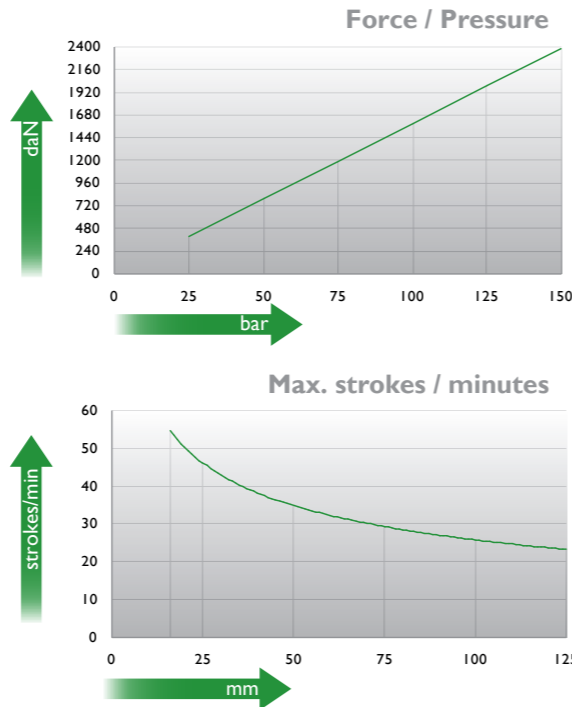
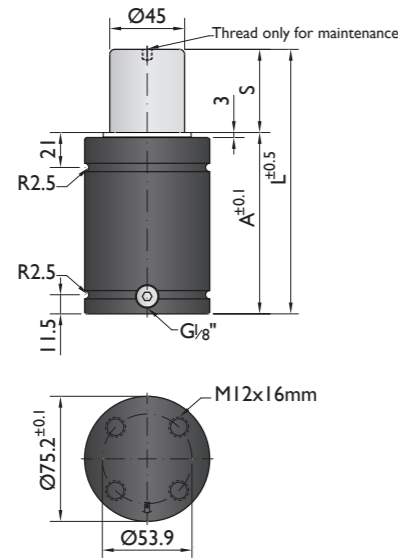
### CF-1500





PSA  
E24.54.815.G

SMS DNH  
3203N



Ordering example: 4 x NT-2400-50

Order No.	S <sup>(1)</sup> mm	L mm	A mm	F <sub>0</sub> <sup>(2)</sup> daN	F daN	(3)	kg
NT-2400-16	16	91	75	2400	3700	No	2.01
NT-2400-19	19	97	78		3800	No	2.06
NT-2400-25	25	109	84		3900	No	2.17
NT-2400-32	32	123	91		4000	No	2.30
NT-2400-38	38	135	97		4000	No	2.41
NT-2400-50	50	159	109		4300	Yes	2.63
NT-2400-63	63	185	122		4300	Yes	2.86
NT-2400-75	75	209	134		4100	Yes	3.09
NT-2400-80	80	219	139		4100	Yes	3.15
NT-2400-100	100	259	159		4100	Yes	3.54
NT-2400-125	125	309	184		4100	Yes	4.05

<sup>(1)</sup> other strokes under request

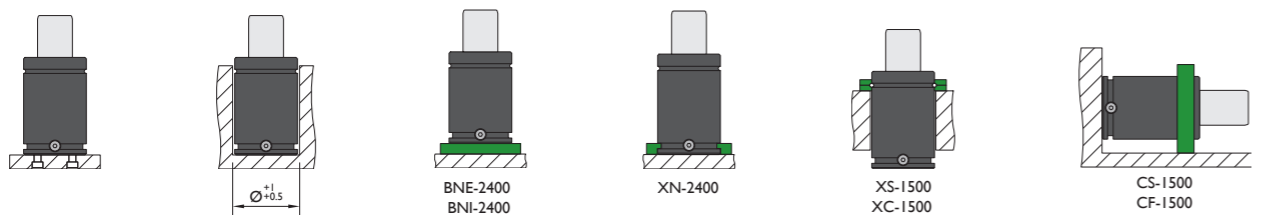
<sup>(2)</sup> alternative forces upon request

<sup>(3)</sup> ESK available for other strokes



Pressure medium	N <sub>2</sub>	Working temperature	0-80°C	Min. security stroke	10%
Max. Charging pressure	150 bar	Temperature related force increase	+0.34%/°C	Repair Kit	KIT NT-2400
Min. Charging pressure	25 bar	Max. working speed	1.6 m/s	Linkable	GI 1/8"

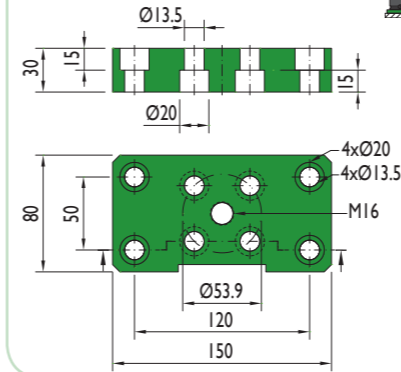
### Mounting possibilities



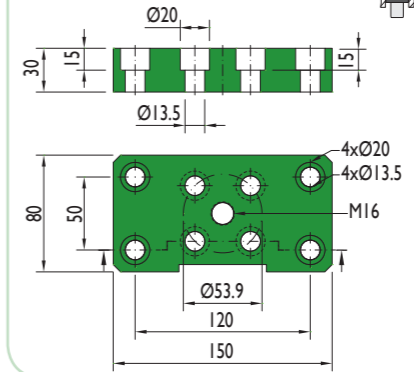
Flange must not support spring's force

## Flanges

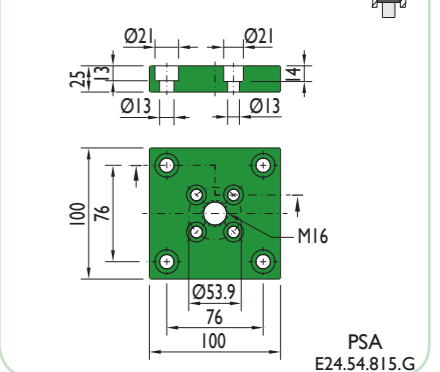
### BNE-2400



### BNI-2400

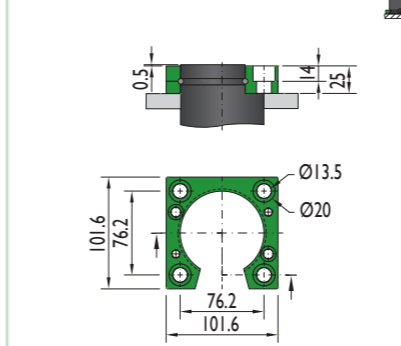


### BFP-2400

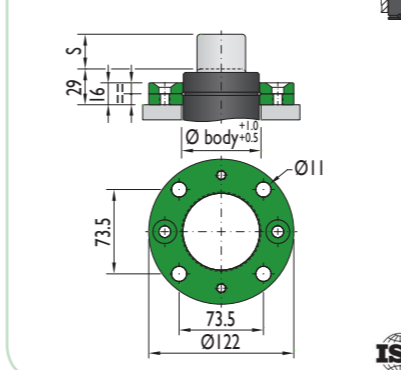


PSA  
E24.54.815.G

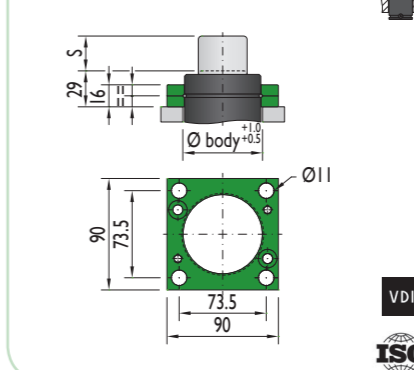
### XN-2400



### XS-1500



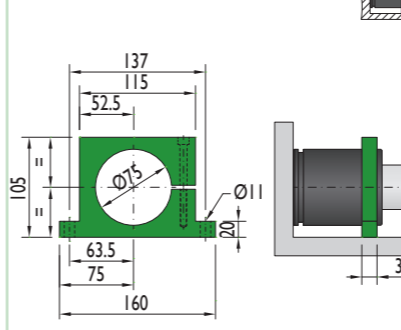
### XC-1500



VDI

ISO

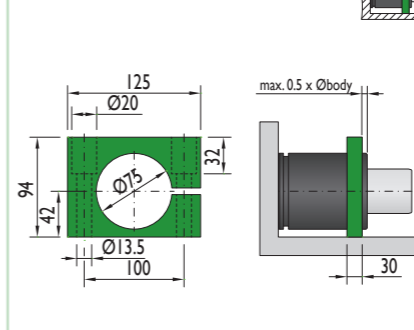
### CS-1500



Flange must not support spring's force

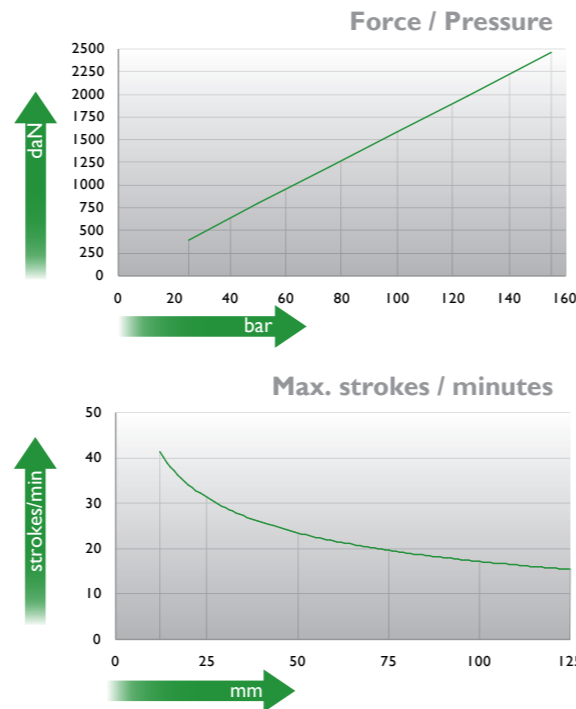
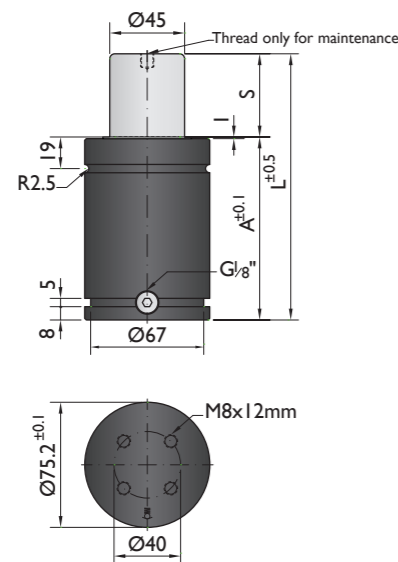
ISO

### CF-1500



Flange must not support spring's force

VDI



Ordering example: 4 x K-2500-50

Order No.	S <sup>(1)</sup> mm	L mm	A mm	F <sub>0</sub> <sup>(2)</sup> daN	F daN	(3)	kg
K-2500-12	12	84	72	2500 (20°C, 155 bar)	3500	No	1.96
K-2500-25	25	110	85		3800	No	2.18
K-2500-38	38	136	98		4000	No	2.43
K-2500-50	50	160	110		4300	Yes	2.82
K-2500-63	63	186	123		4100	Yes	2.96
K-2500-80	80	220	140		4100	Yes	3.20
K-2500-100	100	260	160		4100	Yes	3.45
K-2500-125	125	310	185		4100	Yes	3.80

other strokes under request

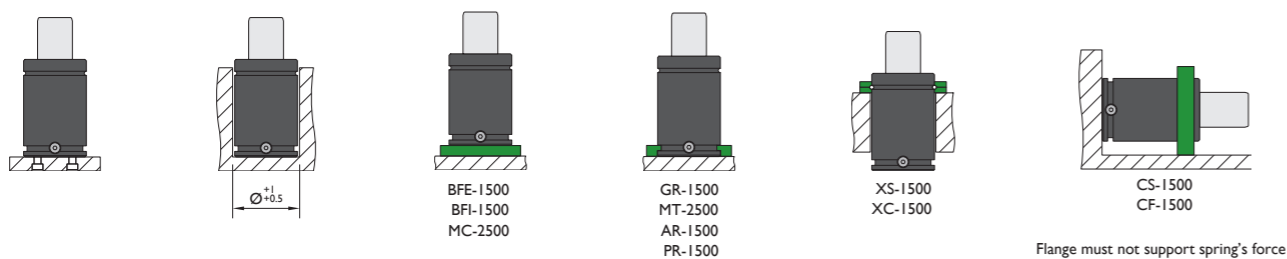
alternative forces upon request

ESK available for other strokes



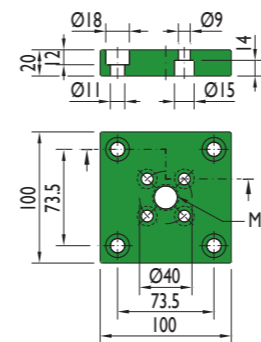
Pressure medium	N <sub>2</sub>	Working temperature	0-80°C	Min. security stroke	10%
Max. Charging pressure	155 bar	Temperature related force increase	+0.34%/°C	Repair Kit	KIT K-2500
Min. Charging pressure	25 bar	Max. working speed	1.6 m/s	Linkable	G1/8"

### Mounting possibilities

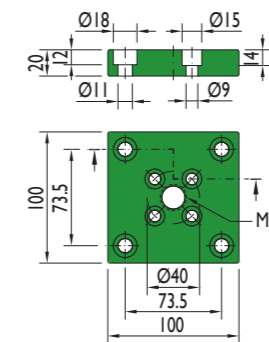


## Flanges

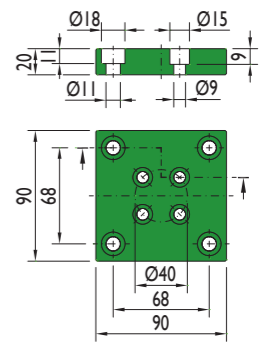
### BFE-1500



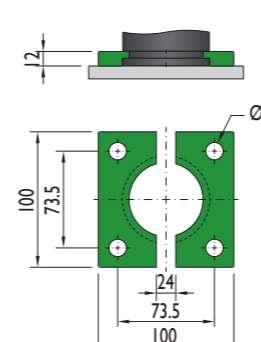
### BFI-1500



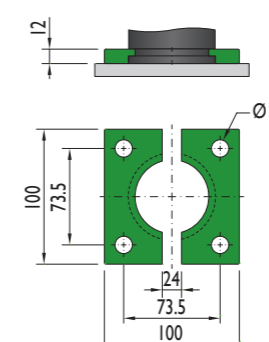
### MC-2500



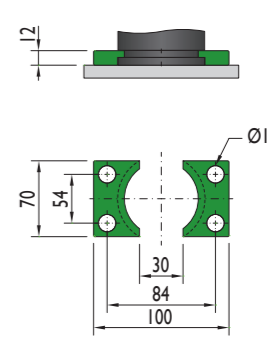
### GR-1500



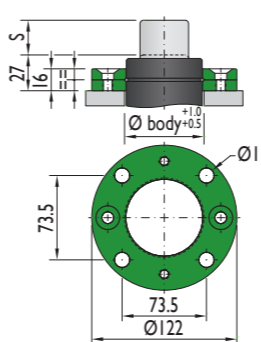
### MT-2500



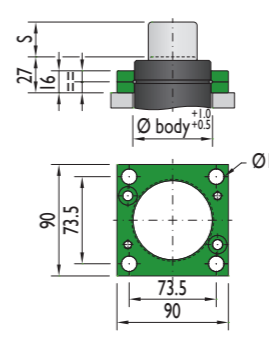
### AR-1500



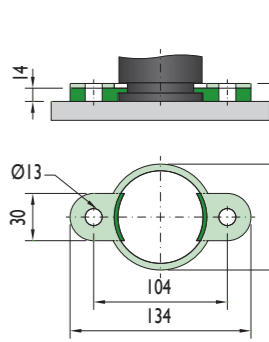
### XS-1500



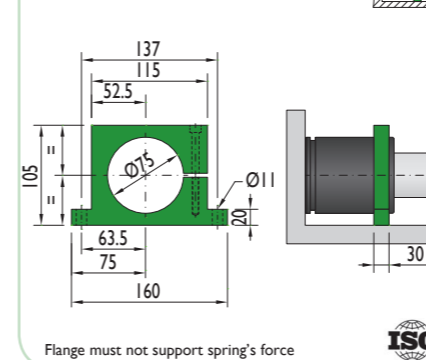
### XC-1500



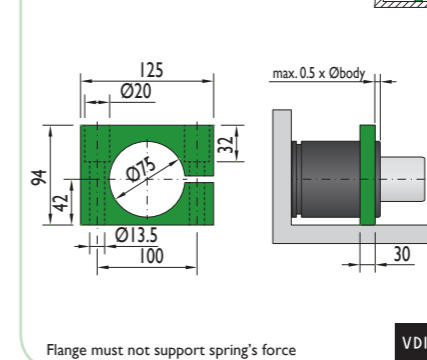
### PR-1500



### CS-1500



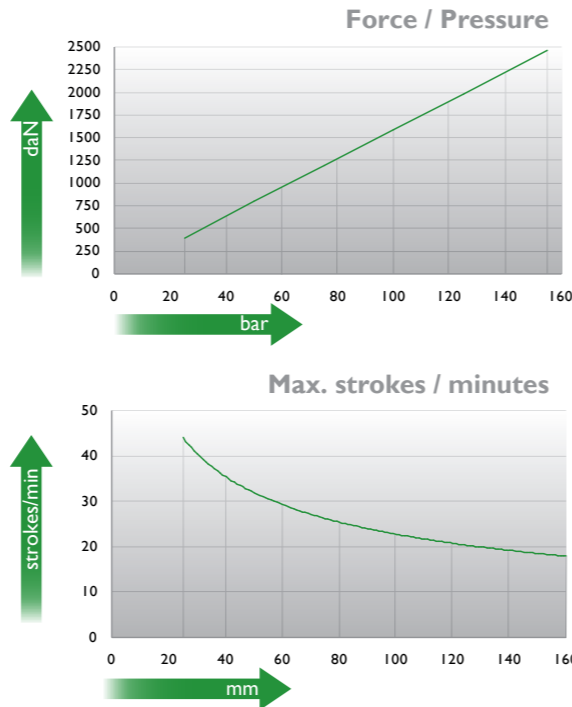
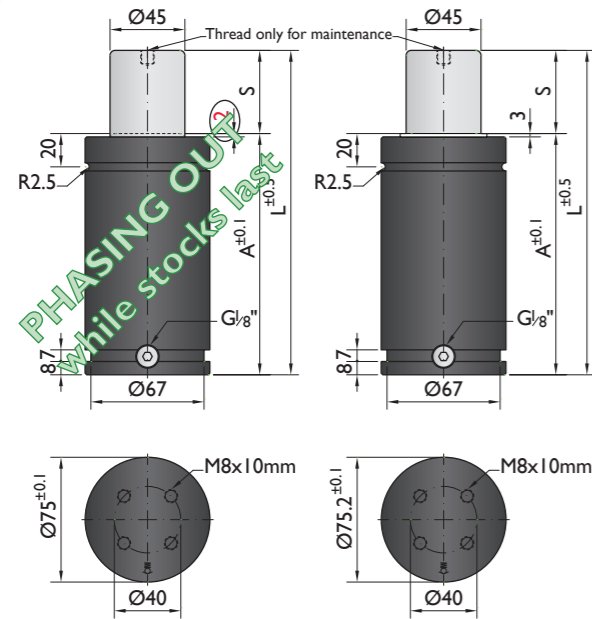
### CF-1500





\*The new cylinder will be supplied when the stock runs out.

NEW MODEL\*



Ordering example: 4 x M-2500-50

Order No.	S <sup>(1)</sup> mm	L mm	A mm	F <sub>0</sub> <sup>(2)</sup> daN	F daN	(3)	kg
M-2500-25	25	145	120	2500 (20°C, 155 bar)	3300	No	2.85
M-2500-38	38	171	133		3500	No	3.21
M-2500-50	50	195	145		3600	No	3.29
M-2500-63	63	221	158		3700	No	3.50
M-2500-80	80	255	175		3900	Yes	3.85
M-2500-100	100	300	200		3900	Yes	4.30
M-2500-125	125	350	225		3900	Yes	4.74
M-2500-160	160	425	265		4000	Yes	5.34

other strokes under request

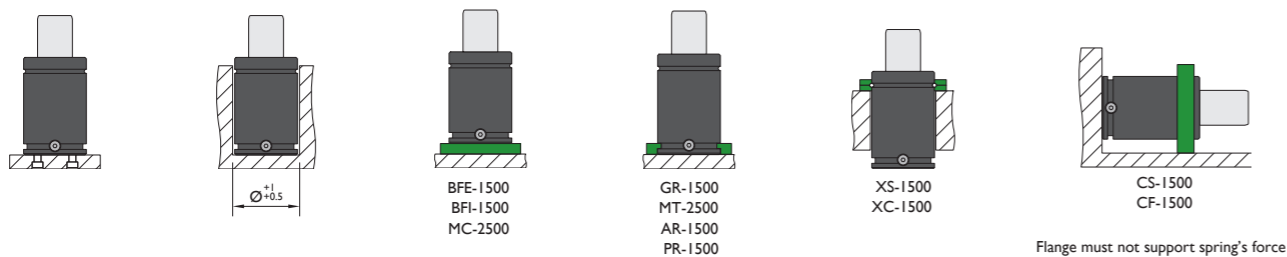
alternative forces upon request

ESK available for other strokes



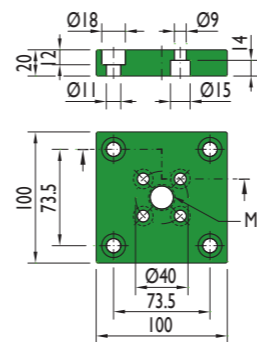
Pressure medium	N <sub>2</sub>	Working temperature	0-80°C	Min. security stroke	10%
Max. Charging pressure	155 bar	Temperature related force increase	+0.34%/°C	Repair Kit	KIT M-2500
Min. Charging pressure	25 bar	Max. working speed	1.6 m/s	Linkable	G1/8"

### Mounting possibilities

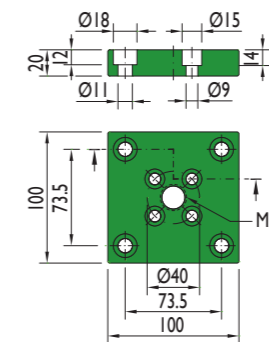


## Flanges

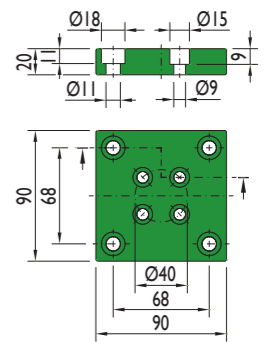
### BFE-1500



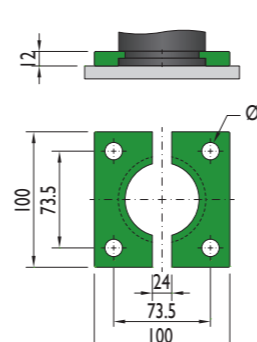
### BFI-1500



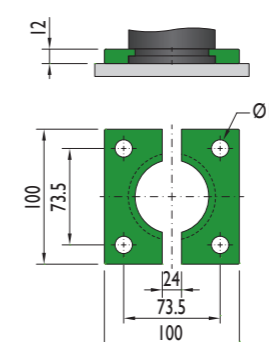
### MC-2500



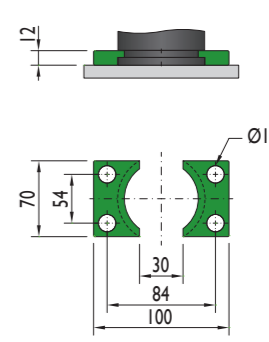
### GR-1500



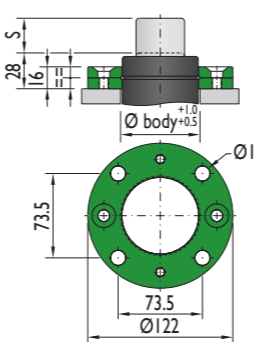
### MT-2500



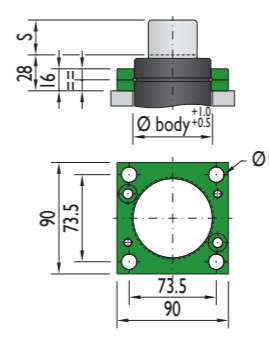
### AR-1500



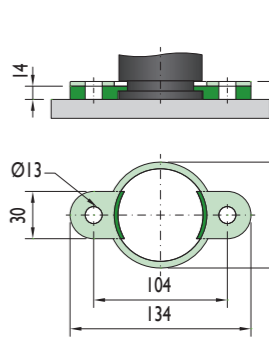
### XS-1500



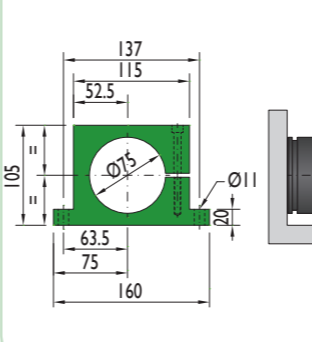
### XC-1500



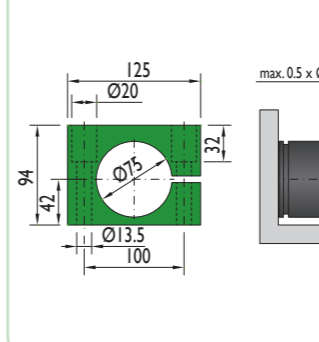
### PR-1500



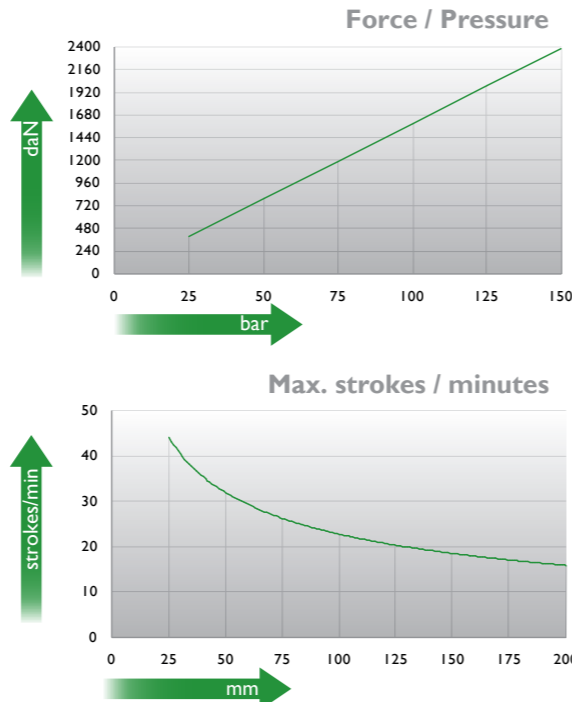
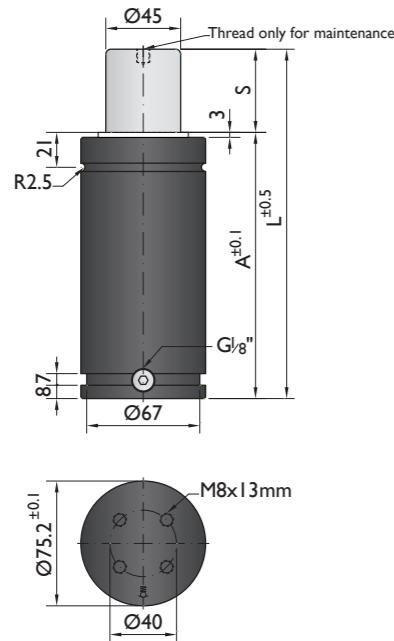
### CS-1500



### CF-1500



Special mounts available on  
[www.nitrogas.com](http://www.nitrogas.com)



Ordering example: 4 x HD-2400-50

Order No.	S <sup>(1)</sup> mm	L mm	A mm	F <sub>0</sub> <sup>(2)</sup> daN	F daN	ESK <sup>(3)</sup>	kg
HD-2400-25	25	160	135	2400	3000	No	3.16
HD-2400-38	38	186	148	2400	3200	No	3.41
HD-2400-50	50	210	160	2400	3300	No	3.75
HD-2400-63	63	236	173	2400	3400	No	4.00
HD-2400-80	80	270	190	2400	3600	Yes	4.32
HD-2400-100	100	310	210	2400	3600	Yes	4.59
HD-2400-125	125	360	235	2400	3700	Yes	5.04
HD-2400-160	160	430	270	2400	3800	Yes	5.68
HD-2400-200	200	510	310	2400	3900	Yes	6.42
HD-2400-250	250	610	360	2400	3900	Yes	7.21
HD-2400-300	300	710	410	2400	4000	Yes	8.00

<sup>(1)</sup> other strokes under request

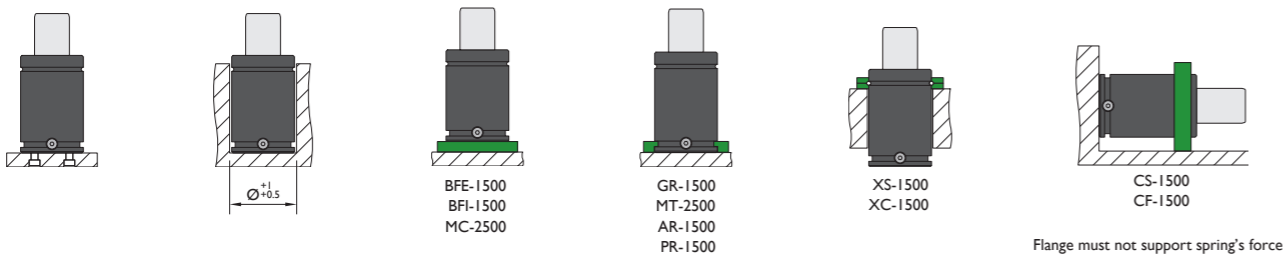
<sup>(2)</sup> alternative forces upon request

<sup>(3)</sup> ESK available for other strokes



Pressure medium	N <sub>2</sub>	Working temperature	0-80°C	Min. security stroke	10%
Max. Charging pressure	150 bar	Temperature related force increase	+0.34%/°C	Repair Kit	KIT HD-2400
Min. Charging pressure	25 bar	Max. working speed	1.6 m/s	Linkable	G1/8"

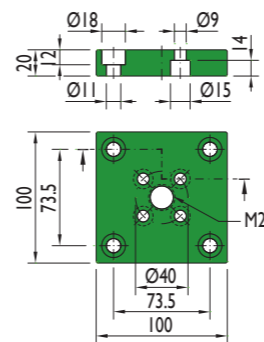
### Mounting possibilities



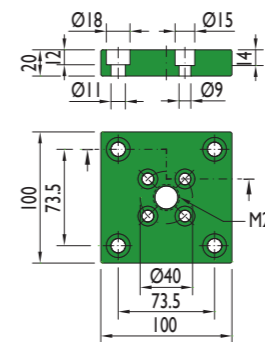
Flange must not support spring's force

## Flanges

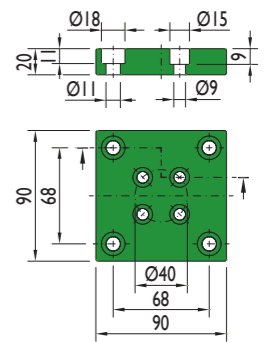
### BFE-1500



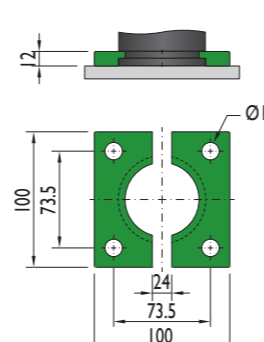
### BFI-1500



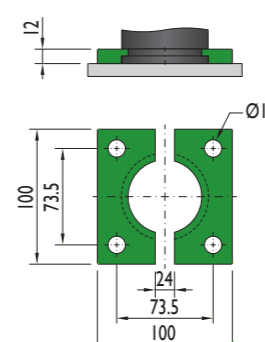
### MC-2500



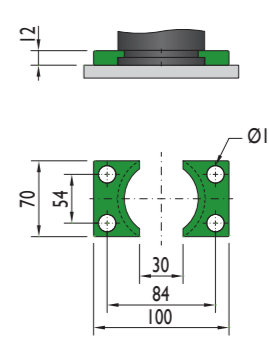
### GR-1500



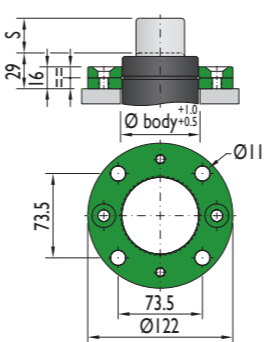
### MT-2500



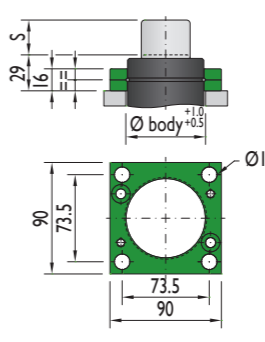
### AR-1500



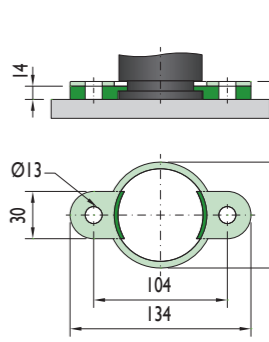
### XS-1500



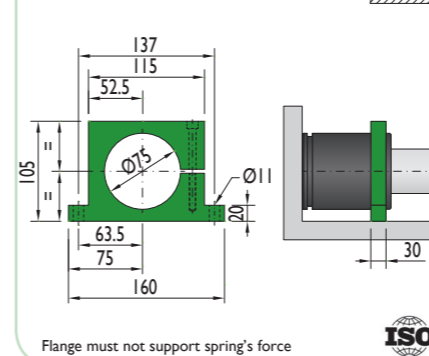
### XC-1500



### PR-1500

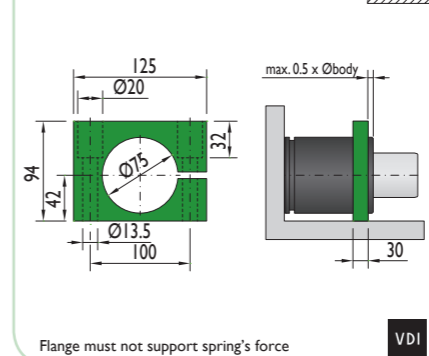


### CS-1500



Flange must not support spring's force

### CF-1500



Flange must not support spring's force