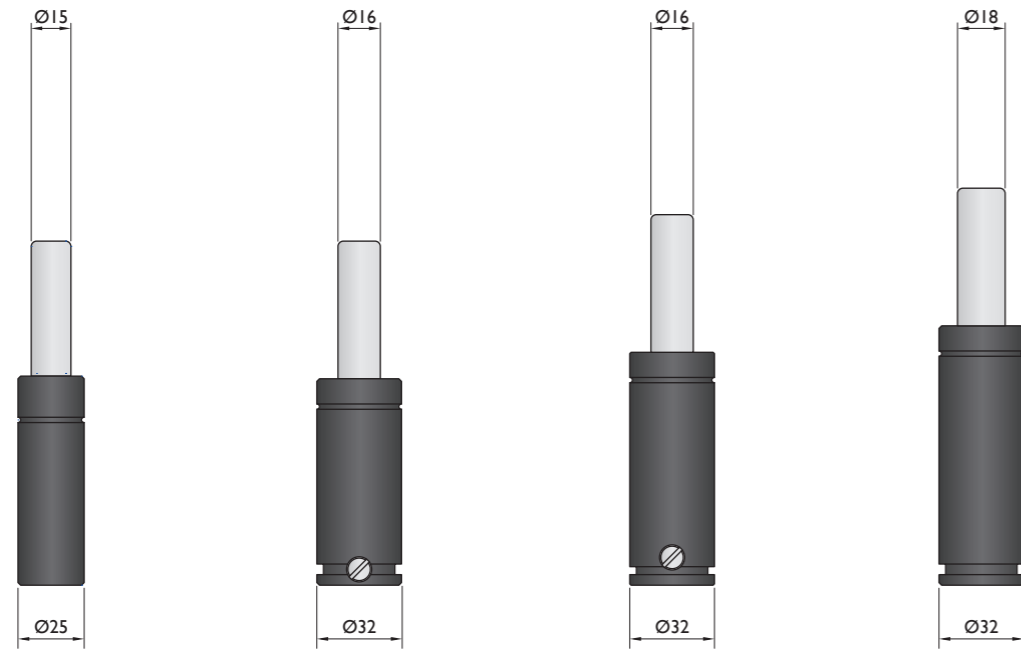
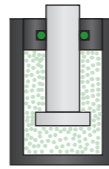


## Force 320 - 450 daN

### Piston Rod Sealed gas springs



Model	KP-320	KP-350	NR-350	M-350
Initial F (daN)	320	360	360	350
L max (mm)	2xStroke+30	2xStroke+30	2xStroke+40	2xStroke+50
Stroke (mm)	7-125	10-125	10-125	15-125

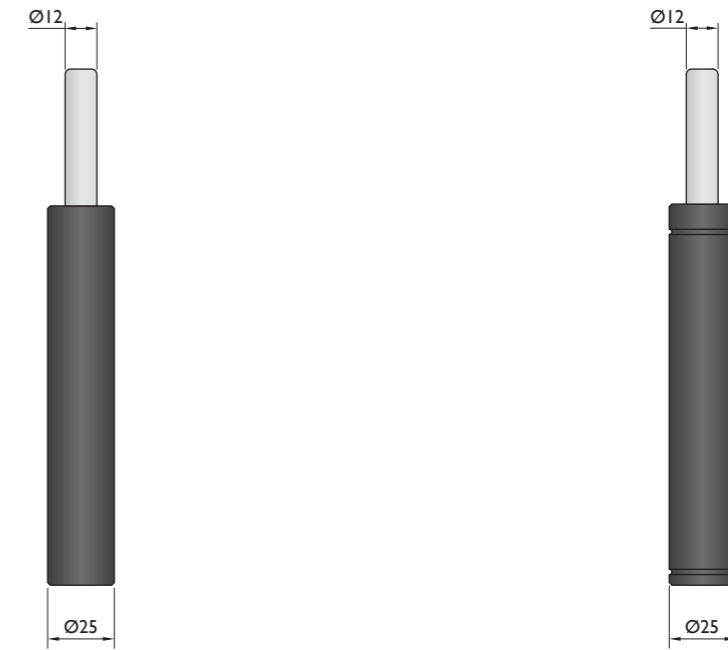
\* other strokes under request

### Standards

PED	PED	PED	PED
97/23/EC	97/23/EC	97/23/EC	97/23/EC
ISO 11901	ISO 11901	ISO 11901	ISO 11901
VDI 3003	VDI 3003	VDI 3003	VDI 3003
CNOMO EM24.54.700	CNOMO EM24.54.700	CNOMO EM24.54.700	CNOMO EM24.54.700

## Force 320 - 450 daN

### Bore Sealed gas springs

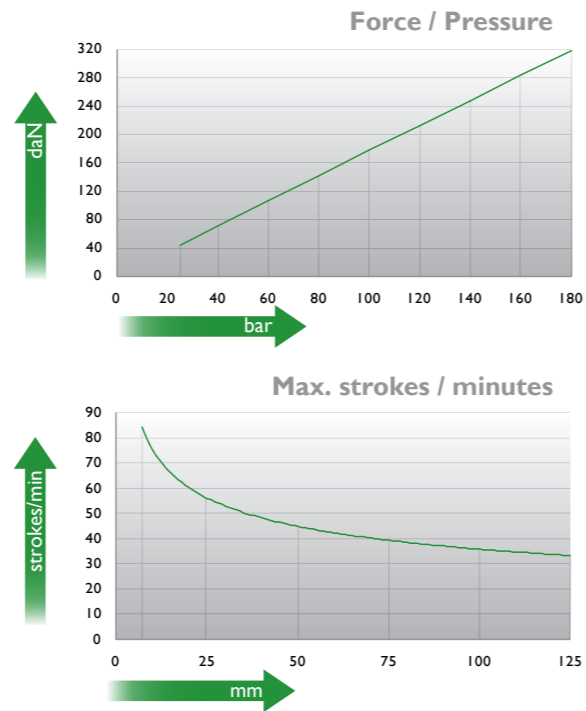
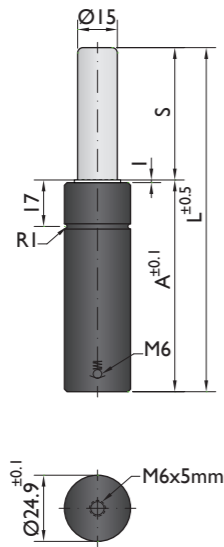


Model	T-420	TS-420
Initial F (daN)	420	420
L max (mm)	56-195	56-195
Stroke (mm)	6-50	6-50

\* other strokes under request

### Standards

PED	PED
97/23/EC	97/23/EC
ISO 11901	ISO 11901
VDI 3003	VDI 3003
CNOMO EM24.54.700	CNOMO EM24.54.700



Ordering example: 4 x KP-320-125

Order No.	S <sup>(1)</sup> mm	L mm	A mm	F <sub>0</sub> <sup>(2)</sup> daN	F daN	kg
KP-320-7	7	44	37	320	450	0.09
KP-320-10	10	50	40	320	470	0.10
KP-320-15	15	60	45	320	500	0.11
KP-320-19	19	68	49	320	510	0.12
KP-320-25	25	80	55	320	530	0.13
KP-320-38	38	106	68	320	550	0.16
KP-320-50	50	130	80	320	560	0.19
KP-320-63	63	156	93	320	560	0.22
KP-320-75	75	185	110	320	560	0.24
KP-320-80	80	195	115	320	560	0.25
KP-320-100	100	235	135	320	560	0.30
KP-320-125	125	285	160	320	560	0.36

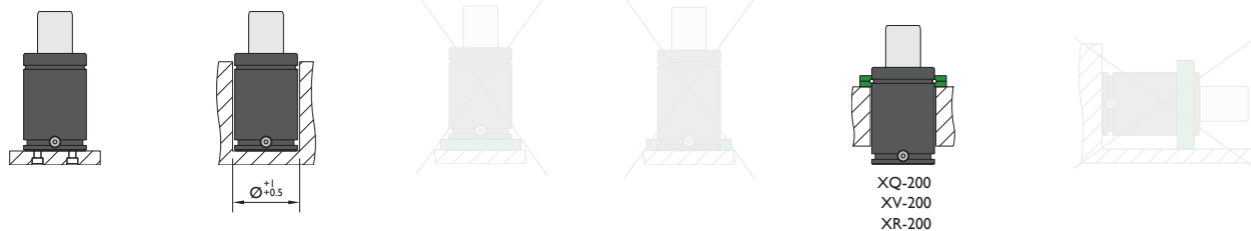
<sup>(1)</sup> other strokes under request

<sup>(2)</sup> alternative forces upon request

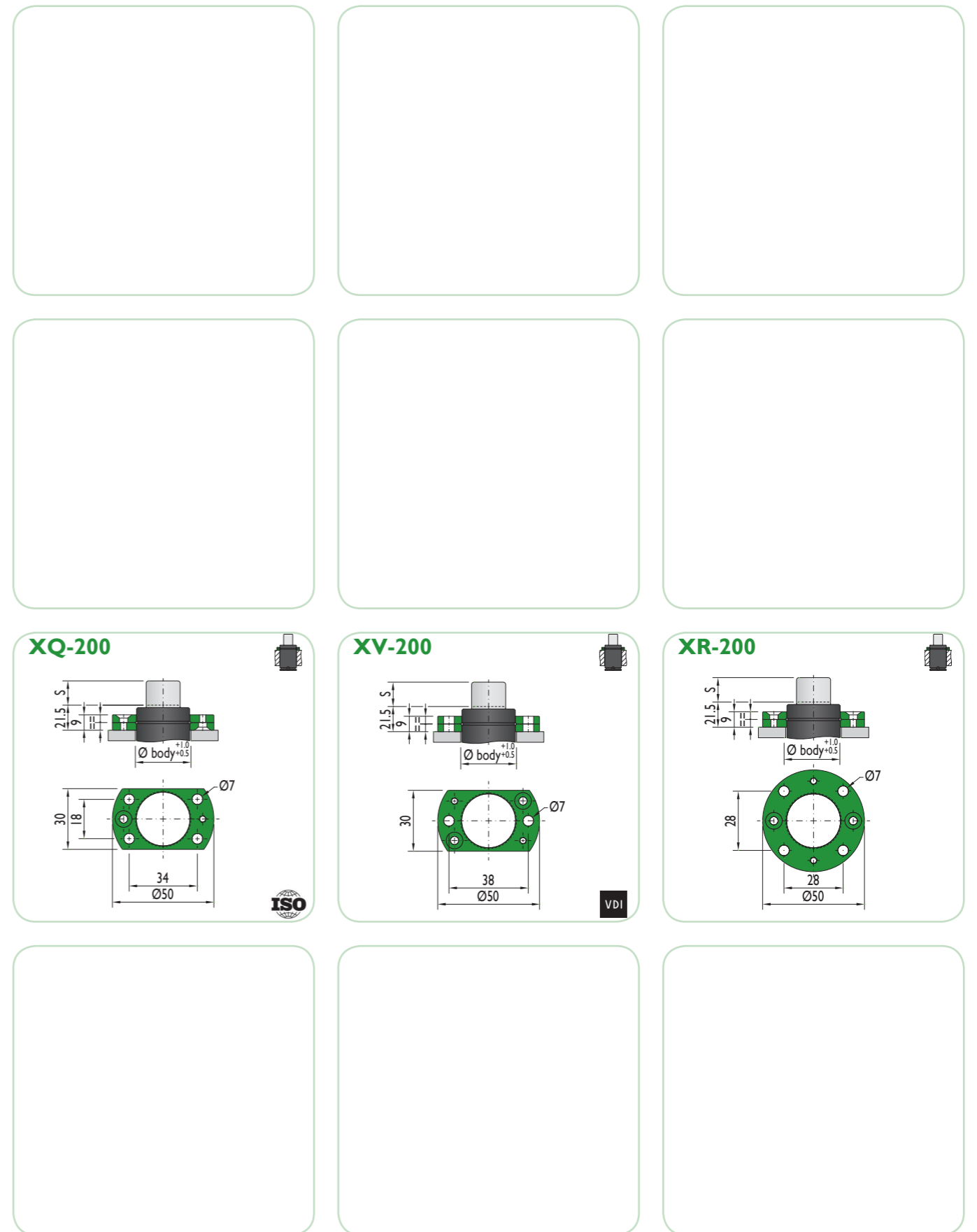


Pressure medium	N <sub>2</sub>	Working temperature	0-80°C	Min. security stroke	10%
Max. Charging pressure	180 bar	Temperature related force increase	+0.34%/°C	Repair Kit	Non-repairable
Min. Charging pressure	25 bar	Max. working speed	1.6 m/s	Linkable	No

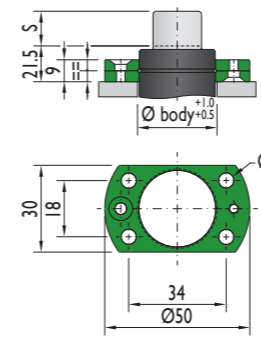
### Mounting possibilities



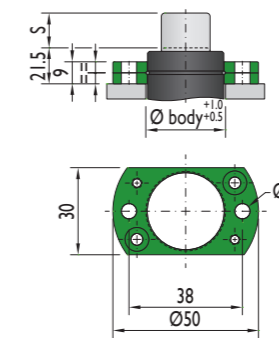
## Flanges



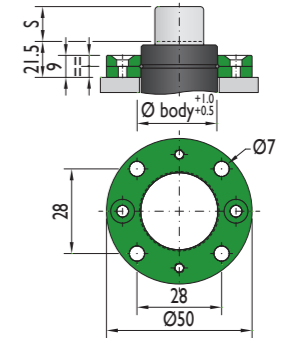
### XQ-200

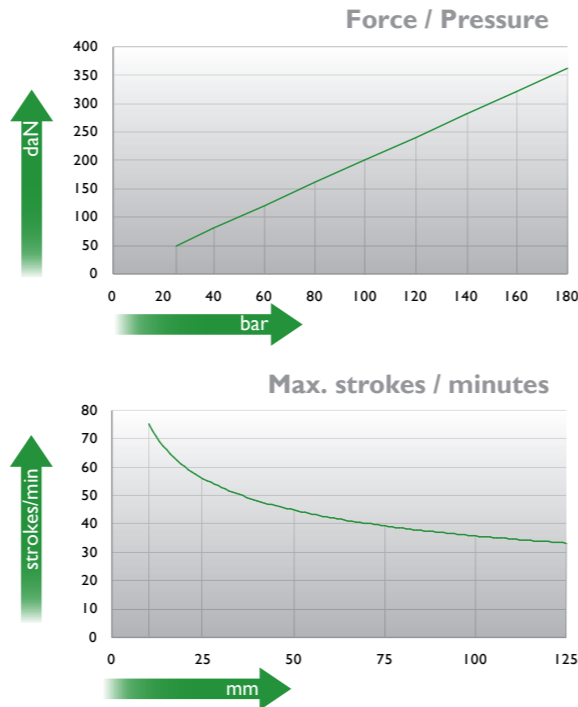
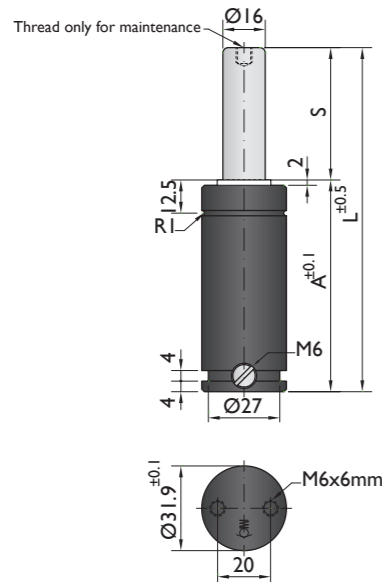


### XV-200



### XR-200





Ordering example: 4 x KP-350-125

Order No.	S <sup>(1)</sup> mm	L mm	A mm	F <sub>0</sub> <sup>(2)</sup> daN	F daN	kg
KP-350-10	10	50	40	360	520	0.16
KP-350-13	13	56	43		530	0.17
KP-350-16	16	62	46		530	0.18
KP-350-19	19	68	49		530	0.19
KP-350-25	25	80	55		530	0.21
KP-350-32	32	94	62		530	0.23
KP-350-38	38	106	68		530	0.25
KP-350-50	50	130	80		540	0.29
KP-350-63	63	156	93		540	0.33
KP-350-75	75	180	105		540	0.37
KP-350-80	80	190	110		540	0.38
KP-350-100	100	230	130		540	0.45
KP-350-125	125	280	155		540	0.53

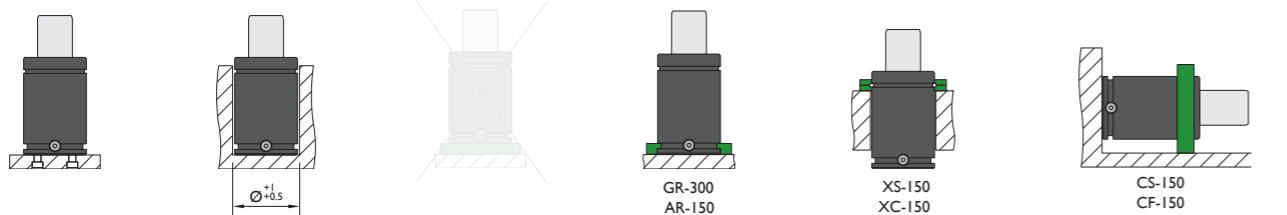
<sup>(1)</sup> other strokes under request

<sup>(2)</sup> alternative forces upon request



Pressure medium	N <sub>2</sub>	Working temperature	0-80°C	Min. security stroke	10%
Max. Charging pressure	180 bar	Temperature related force increase	+0.34%/°C	Repair Kit	KIT KP-350
Min. Charging pressure	25 bar	Max. working speed	1.6 m/s	Linkable	M6

### Mounting possibilities



Flange must not support spring's force

## Flanges

**GR-300**

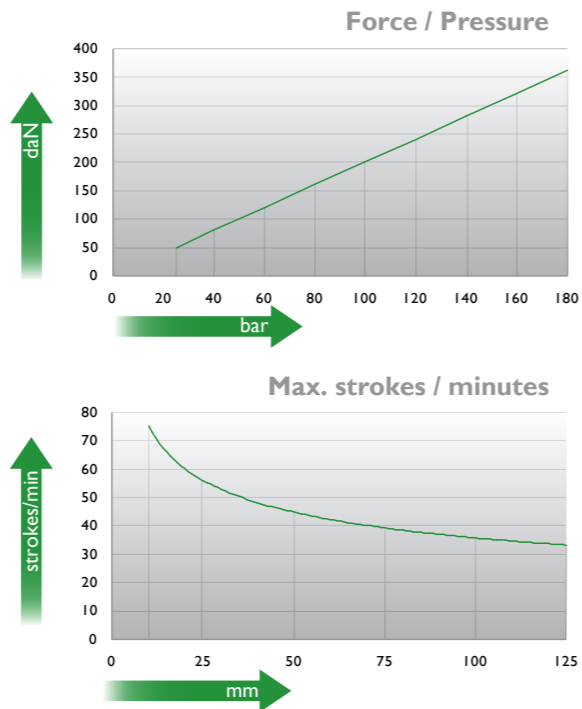
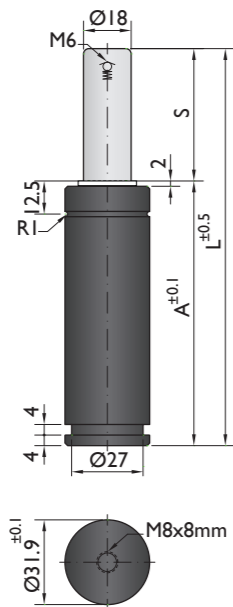
**AR-150**

**XS-150**

**XC-150**

**CS-150**

**CF-150**



Ordering example: 4 x NR-350-125

Order No.	S <sup>(1)</sup> mm	L mm	A mm	F <sub>0</sub> <sup>(2)</sup> daN	F daN	kg
NR-350-10	10	60	50	360	530	0.23
NR-350-13	13	66	53		540	0.23
NR-350-16	16	72	56		540	0.24
NR-350-19	19	78	59		540	0.25
NR-350-25	25	90	65		540	0.27
NR-350-32	32	104	72		540	0.29
NR-350-38	38	116	78		540	0.31
NR-350-50	50	140	90		550	0.35
NR-350-63	63	166	103		550	0.39
NR-350-75	75	190	115		550	0.43
NR-350-80	80	200	120		550	0.44
NR-350-100	100	240	140		550	0.50
NR-350-125	125	290	165		550	0.58

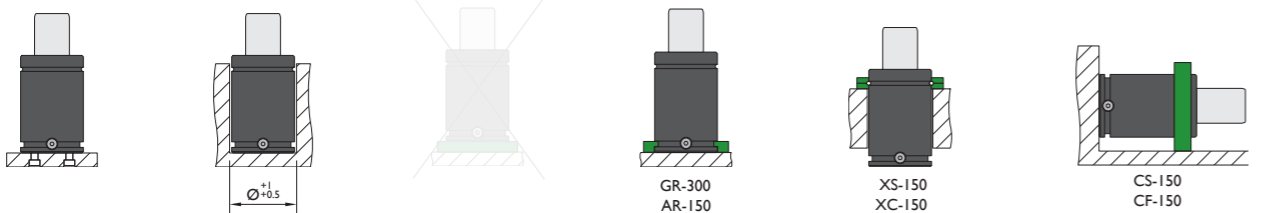
(1) other strokes under request

(2) alternative forces upon request



Pressure medium	N <sub>2</sub>	Working temperature	0-80°C	Min. security stroke	10%
Max. Charging pressure	180 bar	Temperature related force increase	+0.34%/°C	Repair Kit	KIT NR-350
Min. Charging pressure	25 bar	Max. working speed	1.6 m/s	Linkable	M6

### Mounting possibilities



Flange must not support spring's force

## Flanges

**GR-300**

ISO

**AR-150**

**XS-150**

ISO

**XC-150**

VDI

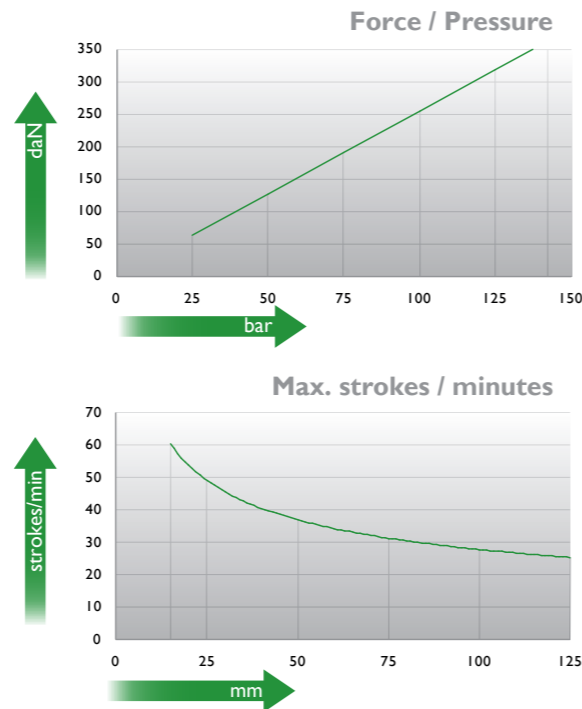
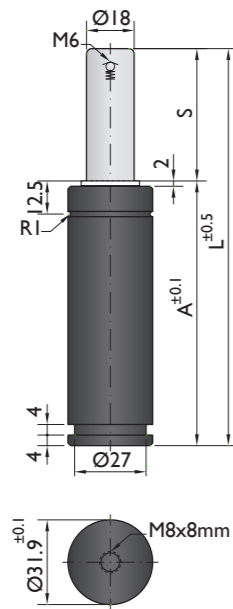
**CS-150**

Flange must not support spring's force

**CF-150**

Flange must not support spring's force

VDI



Ordering example: 4 x M-350-125

Order No.	S <sup>(1)</sup> mm	L mm	A mm	F <sub>0</sub> <sup>(2)</sup> daN	F daN	kg
M-350-15	15	80	65	350	520	0.31
M-350-25	25	100	75		540	0.34
M-350-38	38	126	88		550	0.38
M-350-50	50	150	100		560	0.42
M-350-63	63	176	113		570	0.47
M-350-80	80	210	130		570	0.53
M-350-100	100	250	150		580	0.62
M-350-125	125	300	175		580	0.71

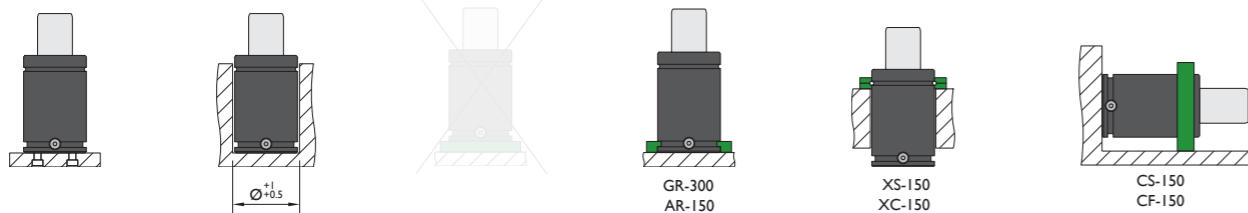
<sup>(1)</sup> other strokes under request

<sup>(2)</sup> alternative forces upon request



Pressure medium	N <sub>2</sub>	Working temperature	0-80°C	Min. security stroke	10%
Max. Charging pressure	140 bar	Temperature related force increase	+0.34%/°C	Repair Kit	KIT M-350
Min. Charging pressure	25 bar	Max. working speed	1.6 m/s	Linkable	No

### Mounting possibilities



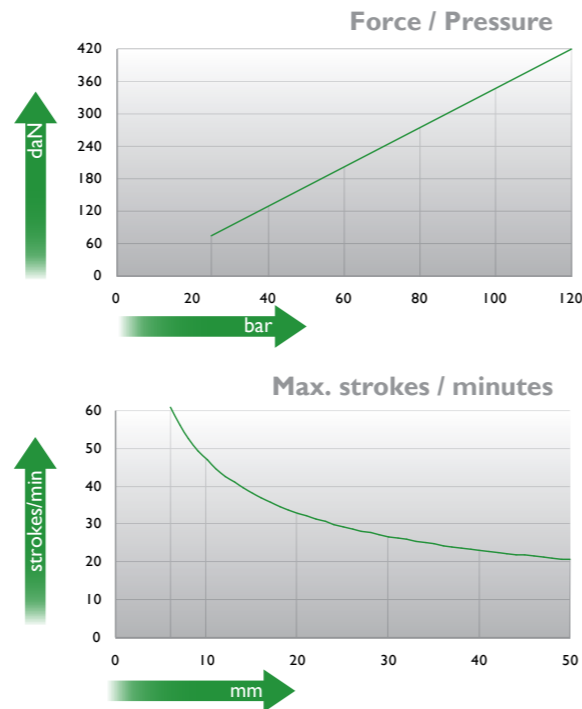
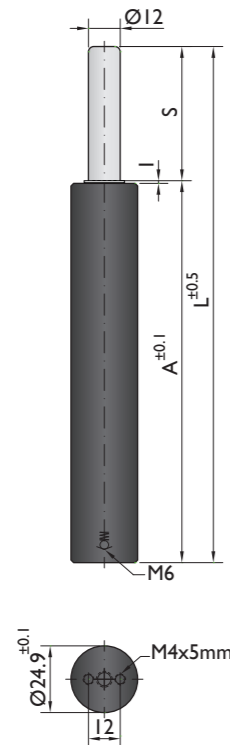
Flange must not support spring's force

## Flanges

<b>GR-300</b> 		<b>AR-150</b> 
<b>XS-150</b> 	<b>XC-150</b> 	
<b>CS-150</b> 	<b>CF-150</b> 	

Flange must not support spring's force

Flange must not support spring's force



Ordering example: 4 x T-420-50

Order No.	S <sup>(1)</sup> mm	L mm	A mm	F <sub>0</sub> <sup>(2)</sup> daN (20°C, 120 bar)	F daN		kg
T-420-6	6	56	50	420	660	No	0.15
T-420-10	10	70	60		670	No	0.17
T-420-16	16	91	75		780	No	0.19
T-420-25	25	120	95		780	No	0.23
T-420-32	32	140	108		790	No	0.26
T-420-40	40	165	125		790	No	0.29
T-420-50	50	195	145		790	No	0.32

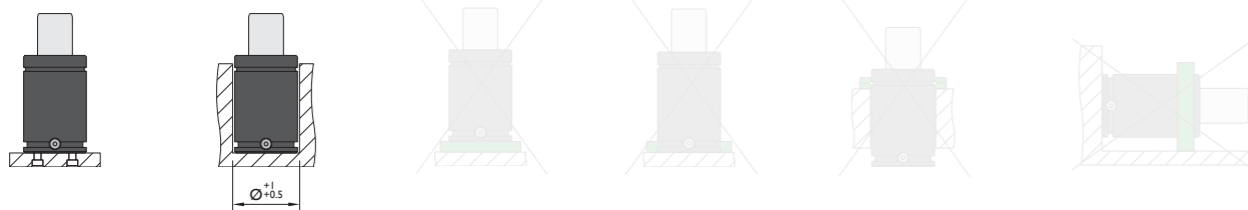
<sup>(1)</sup> other strokes under request

<sup>(2)</sup> alternative forces upon request

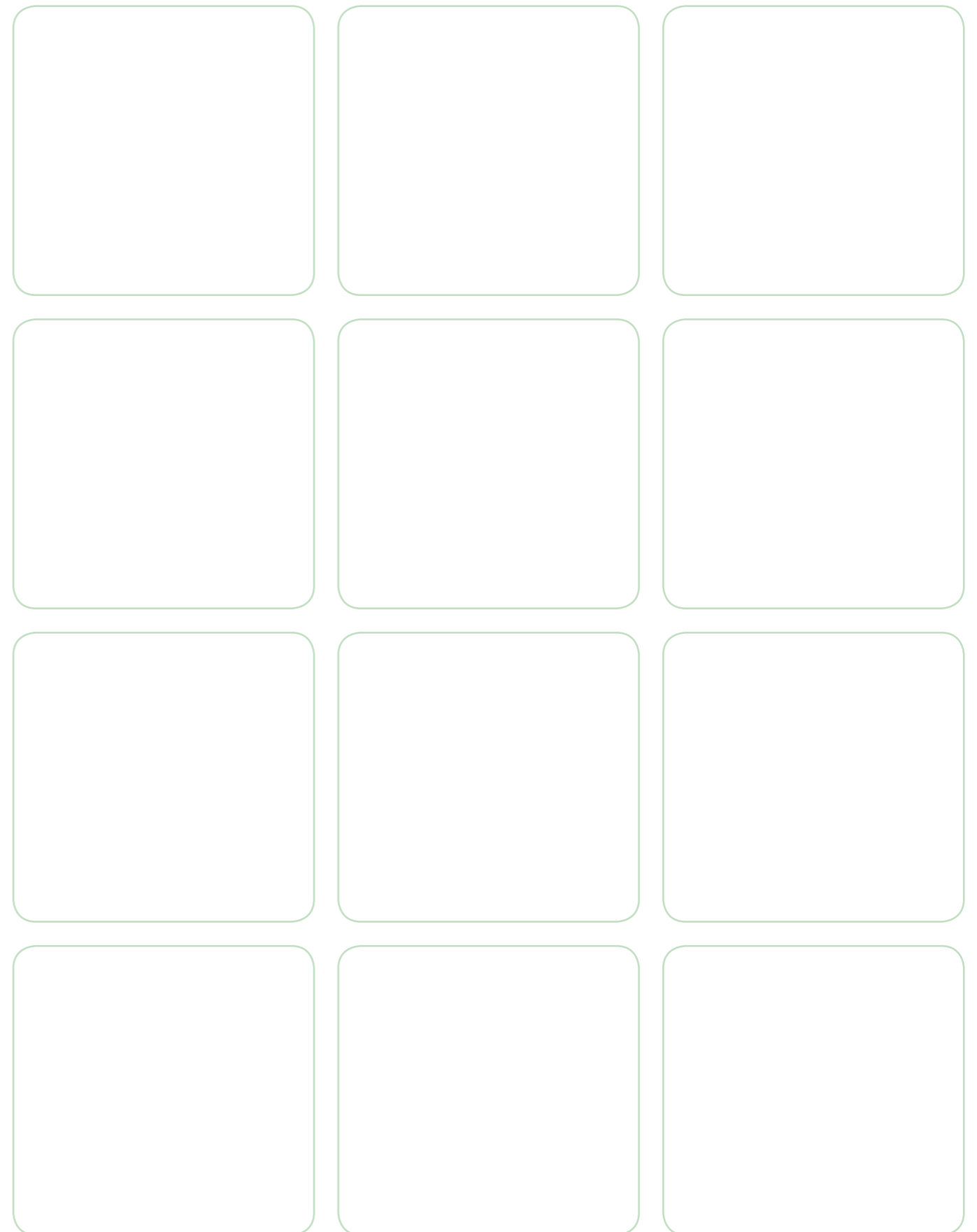


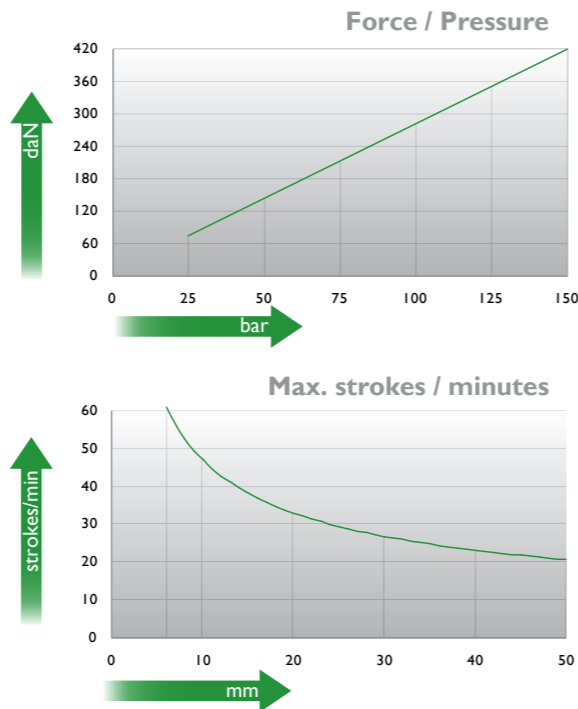
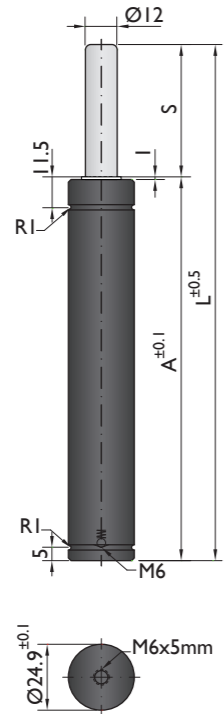
Pressure medium	N <sub>2</sub>	Working temperature	0-80°C	Min. security stroke	10%
Max. Charging pressure	120 bar	Temperature related force increase	+0.34%/°C	Repair Kit	Non-repairable
Min. Charging pressure	25 bar	Max. working speed	0.5 m/s	Linkable	No

### Mounting possibilities



## Flanges





Ordering example: 4 x TS-420-50

Order No.	S <sup>(1)</sup> mm	L mm	A mm	F <sub>0</sub> <sup>(2)</sup> daN (20°C, 150 bar)	F daN	kg
TS-420-6	6	56	50		660	0.15
TS-420-10	10	70	60		670	0.17
TS-420-16	16	91	75		780	0.19
TS-420-25	25	120	95	420	780	0.23
TS-420-32	32	140	108		790	0.26
TS-420-40	40	165	125		790	0.29
TS-420-50	50	195	145		790	0.32

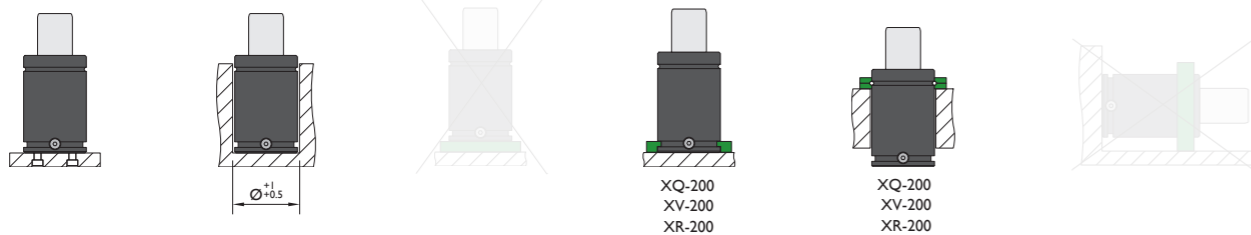
<sup>(1)</sup> other strokes under request

<sup>(2)</sup> alternative forces upon request



Pressure medium	N <sub>2</sub>	Working temperature	0-80°C	Min. security stroke	10%
Max. Charging pressure	150 bar	Temperature related force increase	+0.34%/°C	Repair Kit	Non-repairable
Min. Charging pressure	25 bar	Max. working speed	0.5 m/s	Linkable	No

### Mounting possibilities



## Flanges

