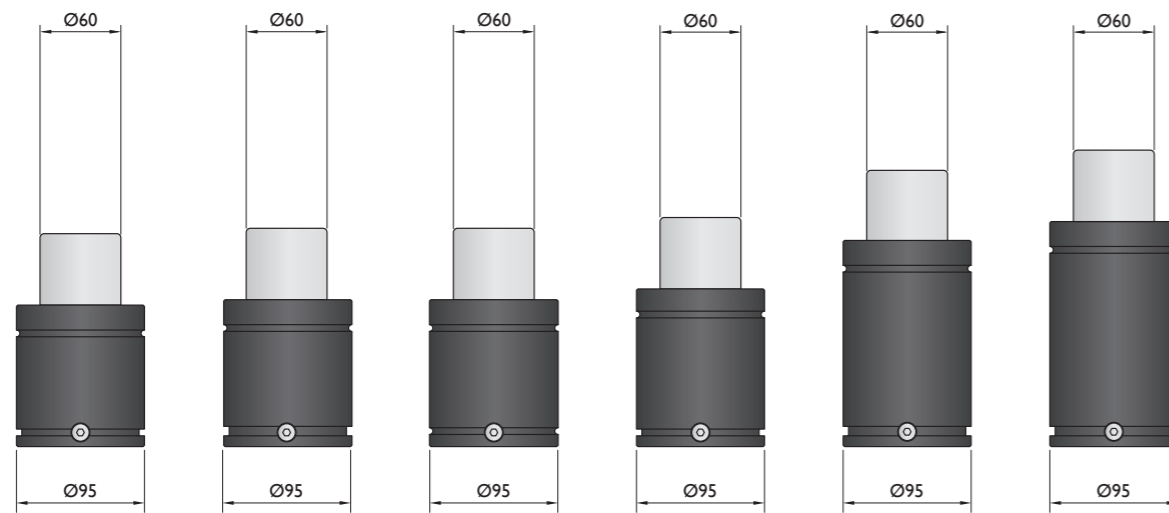
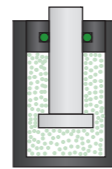


Force 4000 daN

Piston Rod Sealed gas springs



Model	KP-4200	NR-4200	NT-4200	K-4000	M-4000	HD-4200
Initial F (daN)	4200	4200	4200	4000	4000	4200
L max (mm)	2xStroke+58	2xStroke+62	2xStroke+62	2xStroke+70	2xStroke+110	2xStroke+120
Stroke (mm)	16-125	16-125	16-125	25-125	25-160	25-300

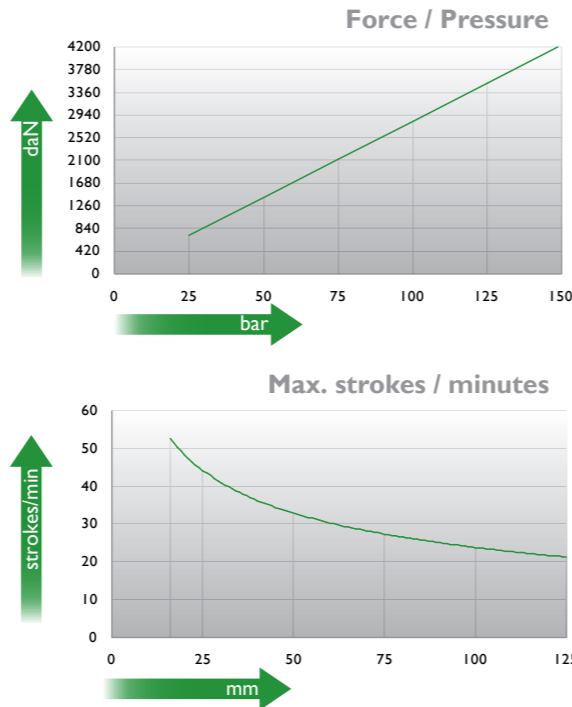
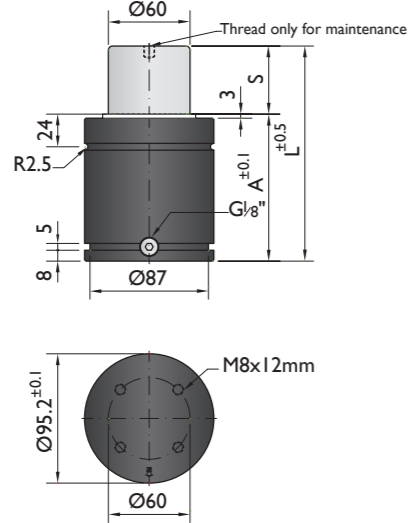
* other strokes under request

Standards

PED 97/23/EC	PED 97/23/EC	PED 97/23/EC	PED 97/23/EC	PED 97/23/EC	PED 97/23/EC
ISO 11901	ISO 11901	ISO 11901	ISO 11901	ISO 11901	ISO 11901
VDI 3003	VDI 3003	VDI 3003	VDI 3003	VDI 3003	VDI 3003
CNOMO EM24.54.700	CNOMO EM24.54.700	CNOMO EM24.54.700	CNOMO EM24.54.700	CNOMO EM24.54.700	CNOMO EM24.54.700



PSA
E24.54.815.G



Ordering example: 4 x KP-4200-125

Order No.	S ⁽¹⁾ mm	L mm	A mm	F ₀ ⁽²⁾ daN	F daN	(3)	kg
KP-4200-16	16	90	74		6500	No	2.82
KP-4200-19	19	96	77		6700	No	2.90
KP-4200-25	25	108	83		6900	No	3.05
KP-4200-32	32	122	90		7000	No	3.23
KP-4200-38	38	134	96		7100	No	3.38
KP-4200-50	50	158	108	4200	7500	No	3.69
KP-4200-63	63	184	121		7600	Yes	4.02
KP-4200-75	75	208	133		7700	Yes	4.32
KP-4200-80	80	218	138		7800	Yes	4.45
KP-4200-100	100	258	158		7900	Yes	4.96
KP-4200-125	125	308	183		8000	Yes	5.60

(1) other strokes under request

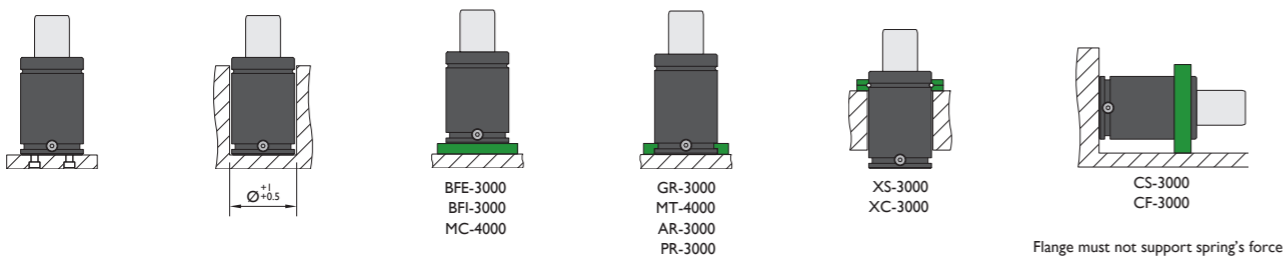
(2) alternative forces upon request

(3) ESK available for other strokes



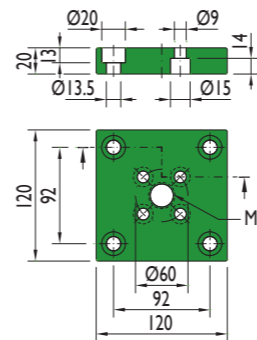
Pressure medium	N ₂	Working temperature	0-80°C	Min. security stroke	10%
Max. Charging pressure	150 bar	Temperature related force increase	+0.34%/°C	Repair Kit	KIT KP-4200
Min. Charging pressure	25 bar	Max. working speed	1.6 m/s	Linkable	G1/8"

Mounting possibilities

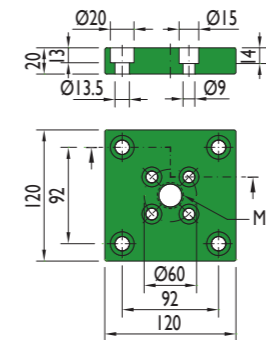


Flanges

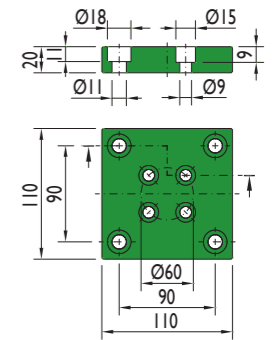
BFE-3000



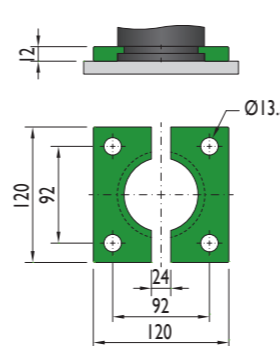
BFI-3000



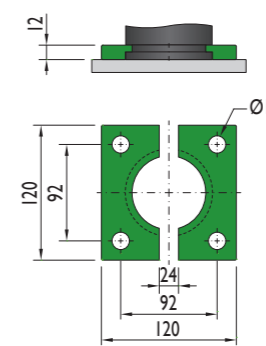
MC-4000



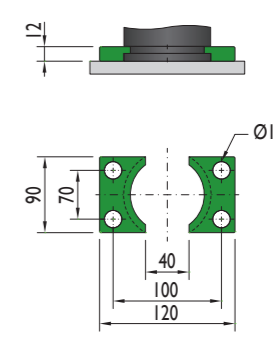
GR-3000



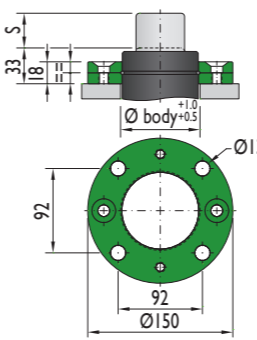
MT-4000



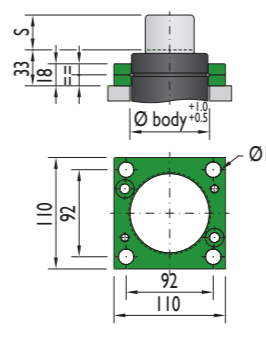
AR-3000



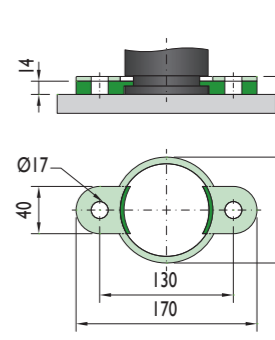
XS-3000



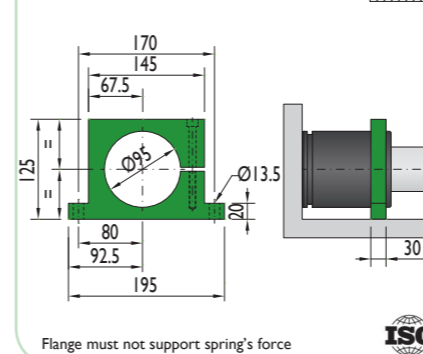
XC-3000



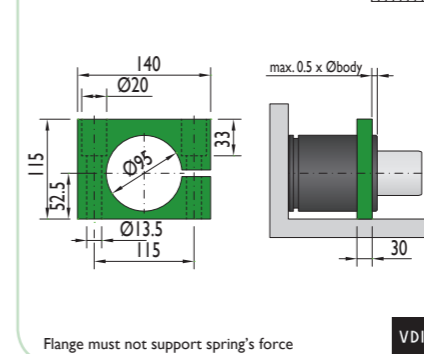
PR-3000

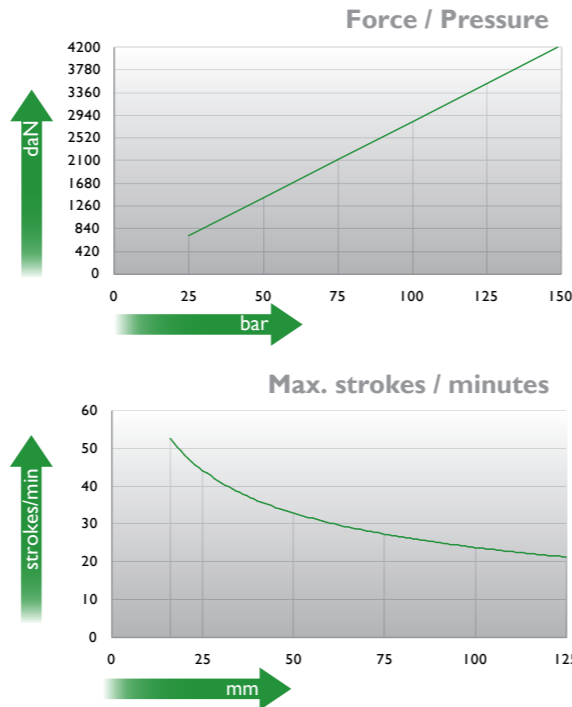
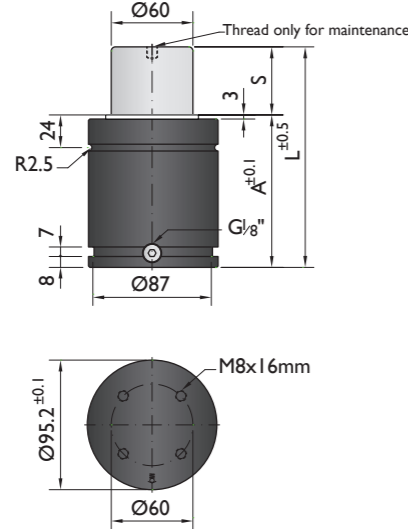


CS-3000



CF-3000





Ordering example: 4 x NR-4200-125

Order No.	S ⁽¹⁾ mm	L mm	A mm	F ₀ ⁽²⁾ daN	F daN	ESK ⁽³⁾	kg
NR-4200-16	16	94	78	4200	6100	No	2.60
NR-4200-19	19	100	81		6300	No	2.75
NR-4200-25	25	112	87		6300	No	2.95
NR-4200-32	32	126	94		6400	No	3.17
NR-4200-38	38	138	100		6500	No	3.32
NR-4200-50	50	162	112		7700	No	3.76
NR-4200-63	63	188	125		7600	Yes	4.12
NR-4200-75	75	212	137		7600	Yes	4.50
NR-4200-80	80	222	142		7600	Yes	4.67
NR-4200-100	100	262	162		7500	Yes	5.30
NR-4200-125	125	312	187		7500	Yes	6.10

⁽¹⁾ other strokes under request

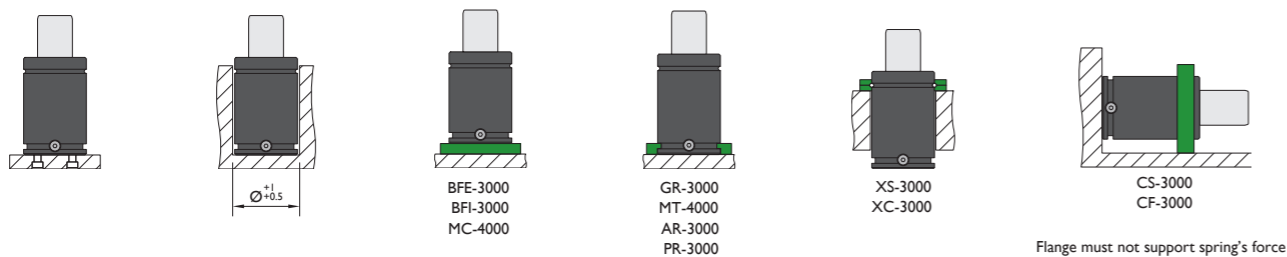
⁽²⁾ alternative forces upon request

⁽³⁾ ESK available for other strokes



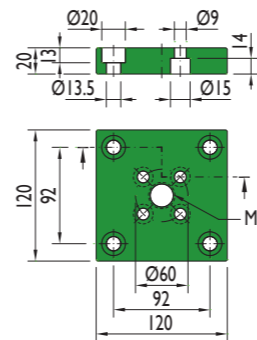
Pressure medium	N ₂	Working temperature	0-80°C	Min. security stroke	10%
Max. Charging pressure	150 bar	Temperature related force increase	+0.34%/°C	Repair Kit	KIT NR-4200
Min. Charging pressure	25 bar	Max. working speed	1.6 m/s	Linkable	G1/8"

Mounting possibilities

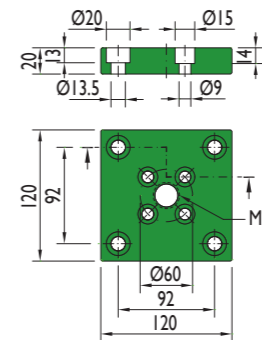


Flanges

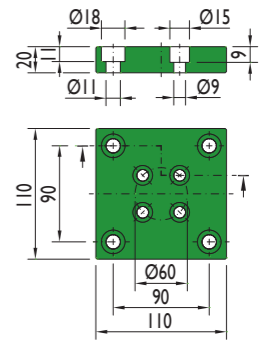
BFE-3000



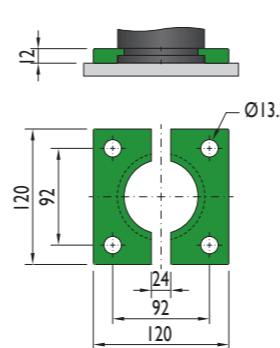
BFI-3000



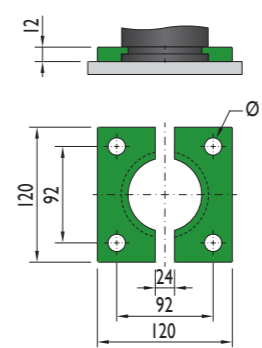
MC-4000



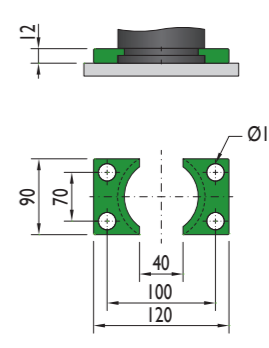
GR-3000



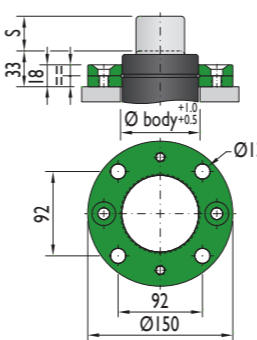
MT-4000



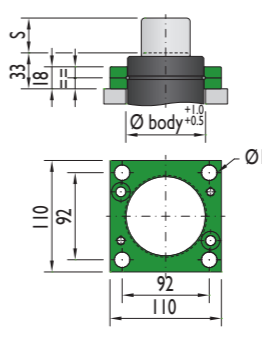
AR-3000



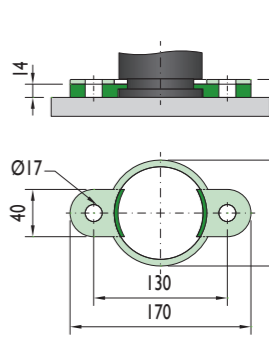
XS-3000



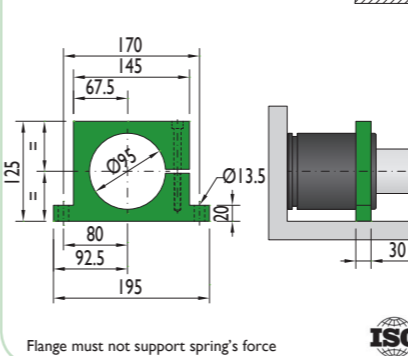
XC-3000



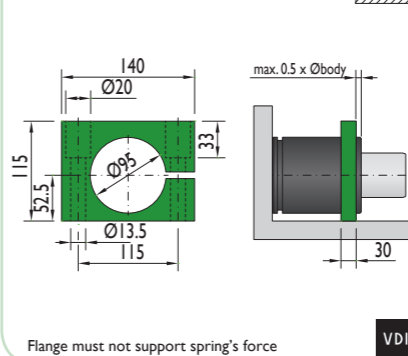
PR-3000



CS-3000



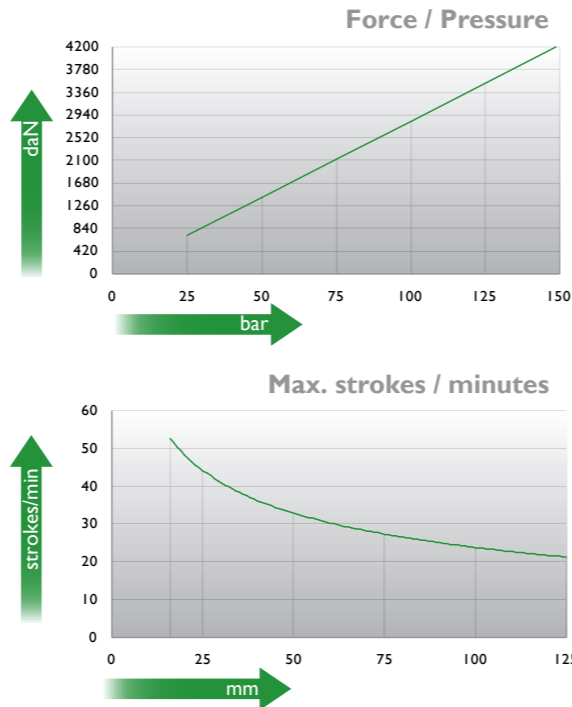
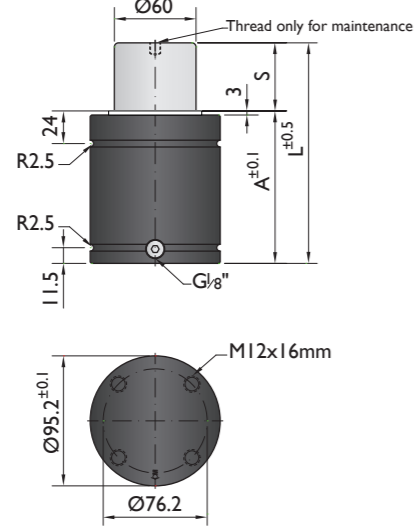
CF-3000





PSA
E24.54.815.G

SMS DNH
3203N



Ordering example: 4 x NT-4200-125

Order No.	S ⁽¹⁾ mm	L mm	A mm	F ₀ ⁽²⁾ daN	F daN	kg
NT-4200-16	16	94	78	4200	6100	2.60
NT-4200-19	19	100	81		6300	2.75
NT-4200-25	25	112	87		6300	2.95
NT-4200-32	32	126	94		6400	3.17
NT-4200-38	38	138	100		6500	3.32
NT-4200-50	50	162	112		7700	3.76
NT-4200-63	63	188	125		7600	4.12
NT-4200-75	75	212	137		7600	4.50
NT-4200-80	80	222	142		7600	4.67
NT-4200-100	100	262	162		7500	5.30
NT-4200-125	125	312	187		7500	6.10

⁽¹⁾ other strokes under request

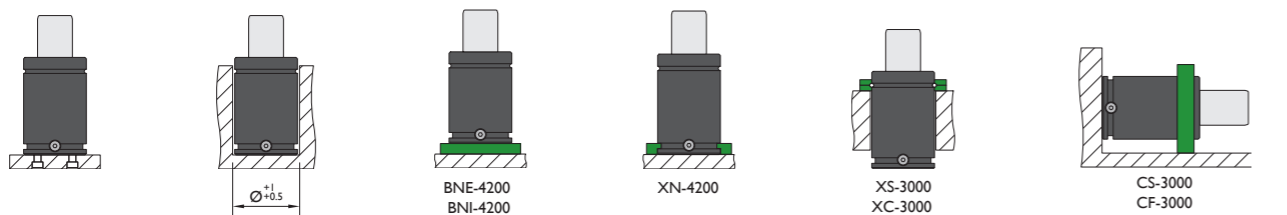
⁽²⁾ alternative forces upon request

⁽³⁾ ESK available for other strokes



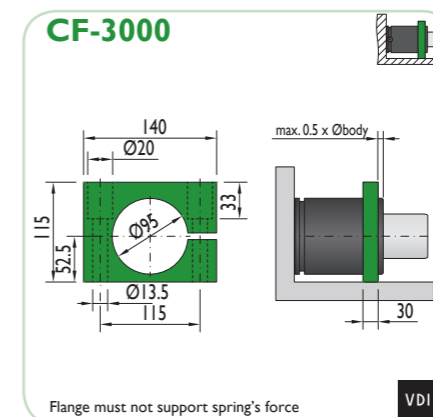
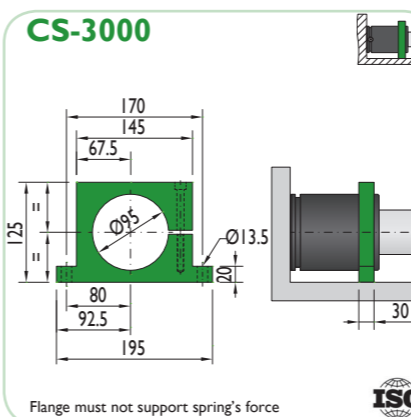
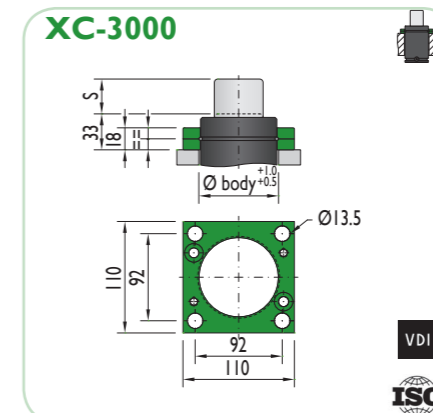
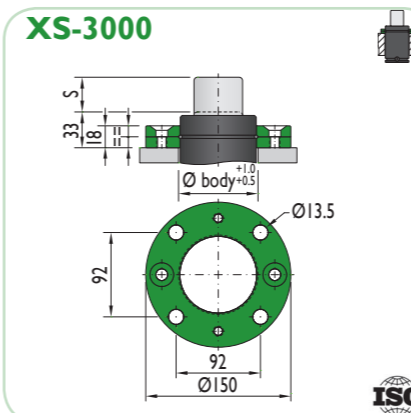
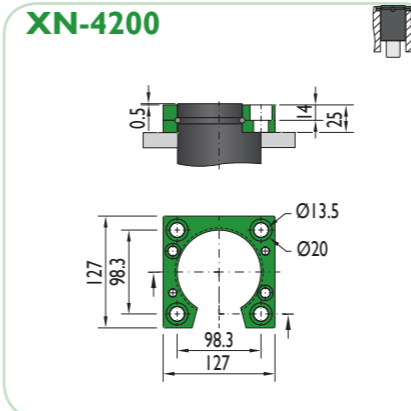
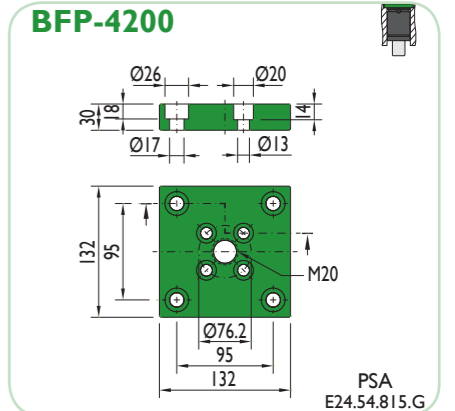
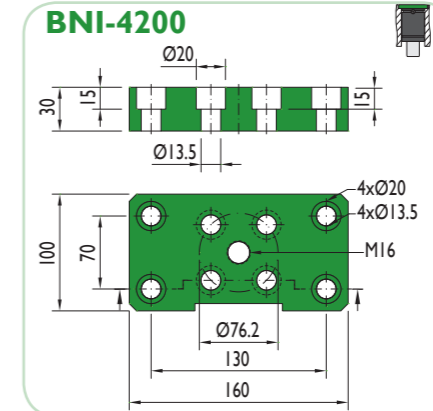
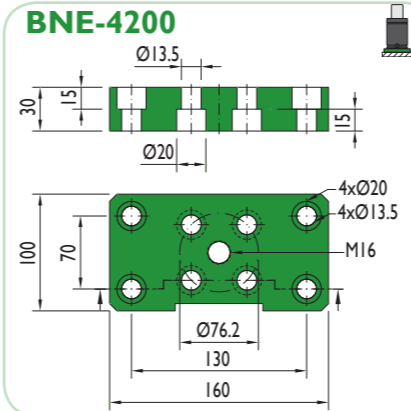
Pressure medium	N ₂	Working temperature	0-80°C	Min. security stroke	10%
Max. Charging pressure	150 bar	Temperature related force increase	+0.34%/°C	Repair Kit	KIT NT-4200
Min. Charging pressure	25 bar	Max. working speed	1.6 m/s	Linkable	G1/8"

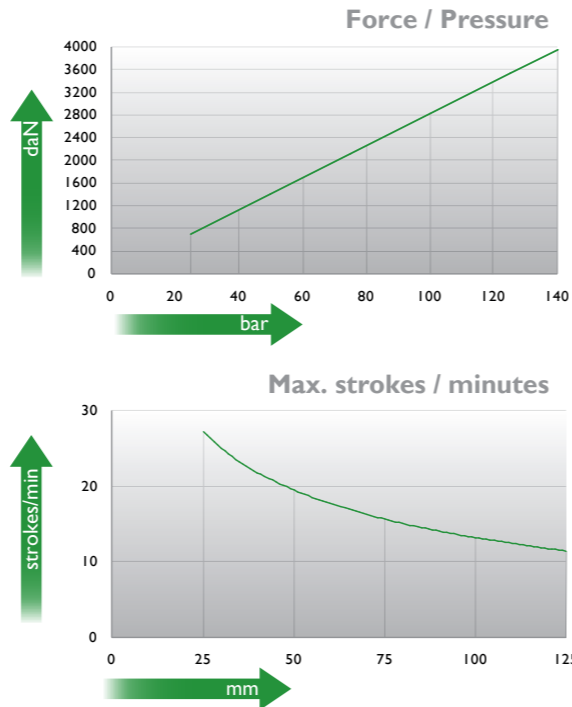
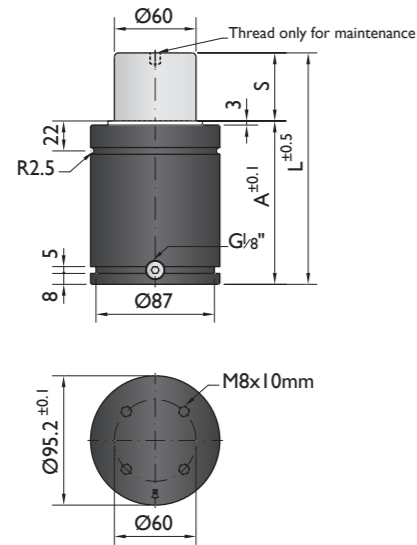
Mounting possibilities



Flange must not support spring's force

Flanges





Ordering example: 4 x K-4000-125

Order No.	S ⁽¹⁾ mm	L mm	A mm	F ₀ ⁽²⁾ daN	F daN	(3)	kg
K-4000-25	25	120	95	4000 (20°C, 140 bar)	5800	No	3.76
K-4000-38	38	146	108		6200	No	4.21
K-4000-50	50	170	120		6300	No	4.50
K-4000-63	63	196	133		7100	Yes	4.82
K-4000-80	80	230	150		7100	Yes	5.26
K-4000-100	100	270	170		7200	Yes	5.63
K-4000-125	125	320	195	7200	Yes	6.05	

⁽¹⁾ other strokes under request

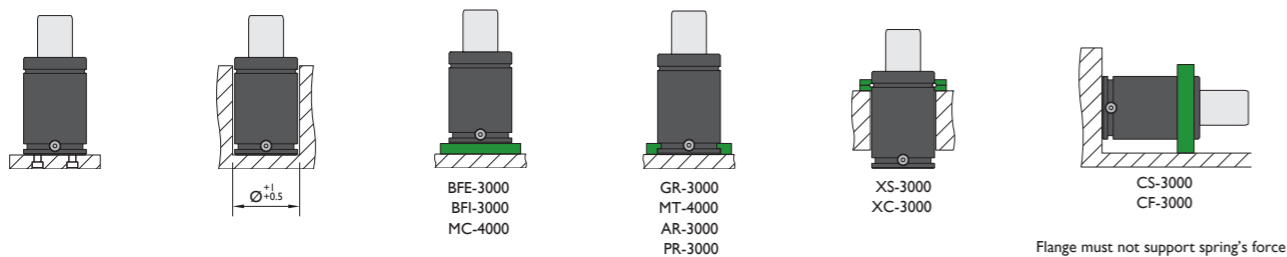
⁽²⁾ alternative forces upon request

⁽³⁾ ESK available for other strokes



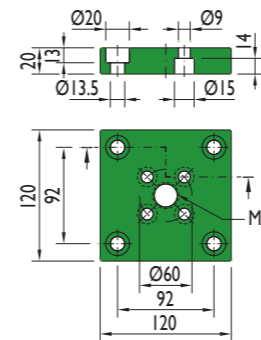
Pressure medium	N ₂	Working temperature	0-80°C	Min. security stroke	10%
Max. Charging pressure	140 bar	Temperature related force increase	+0.34%/°C	Repair Kit	KIT K-4000
Min. Charging pressure	25 bar	Max. working speed	1.6 m/s	Linkable	G1/8"

Mounting possibilities

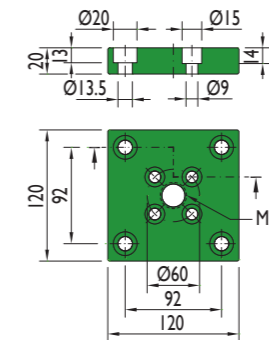


Flanges

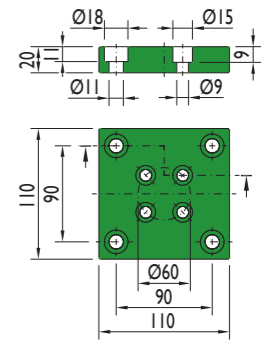
BFE-3000



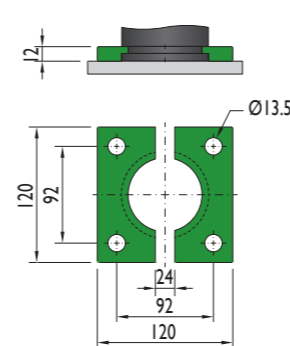
BFI-3000



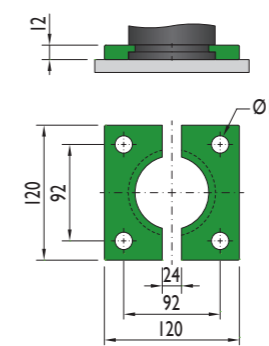
MC-4000



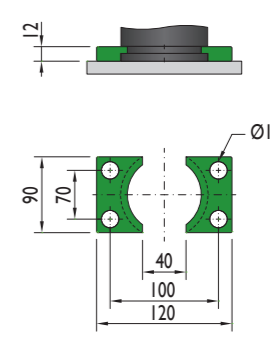
GR-3000



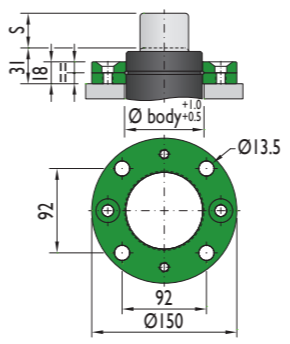
MT-4000



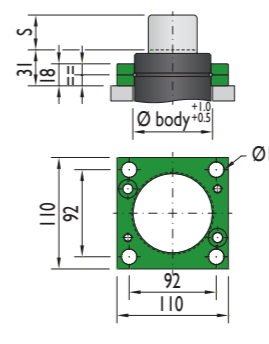
AR-3000



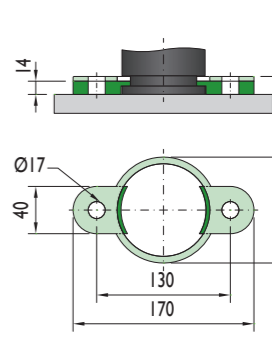
XS-3000



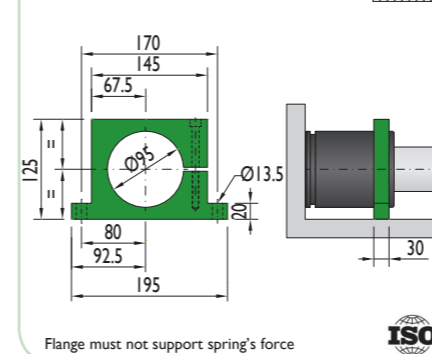
XC-3000



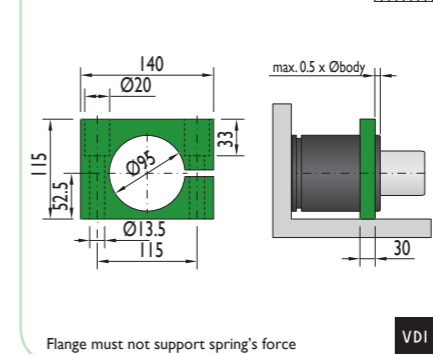
PR-3000



CS-3000



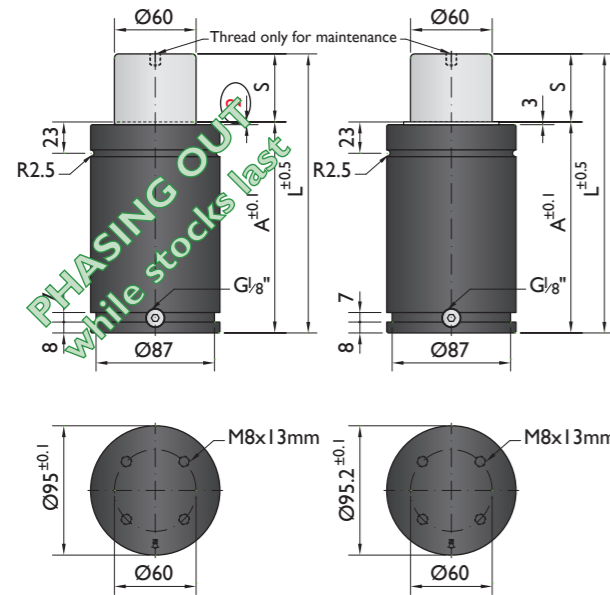
CF-3000



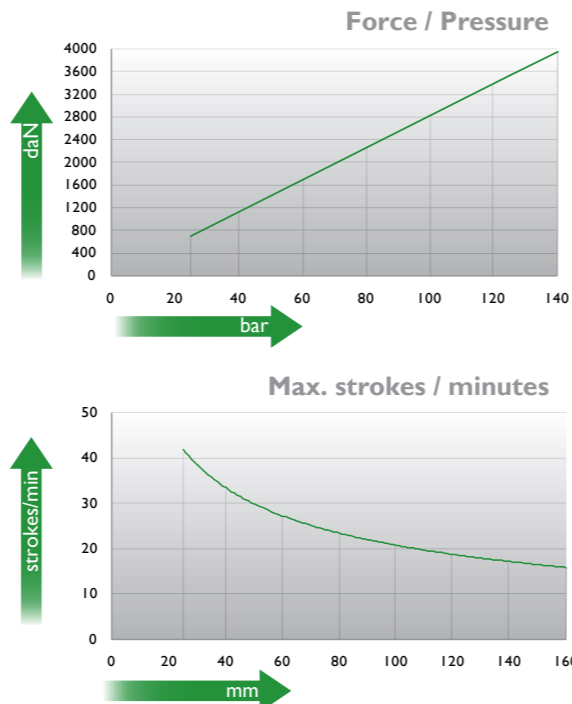


*The new cylinder will be supplied when the stock runs out.

NEW MODEL*



PHASING OUT
While stocks last



Ordering example: 4 x M-4000-125

Order No.	S ⁽¹⁾ mm	L mm	A mm	F ₀ ⁽²⁾ daN (20°C, 140 bar)	F daN	(3)	kg
M-4000-25	25	155	130	4000	5500	No	4.90
M-4000-38	38	181	143		5800	No	5.41
M-4000-50	50	205	155		6100	No	5.91
M-4000-63	63	236	173		6200	No	6.22
M-4000-80	80	270	190		6600	Yes	6.82
M-4000-100	100	310	210		6700	Yes	7.17
M-4000-125	125	370	245		6700	Yes	8.30
M-4000-160	160	440	280		6800	Yes	8.88

(1) other strokes under request

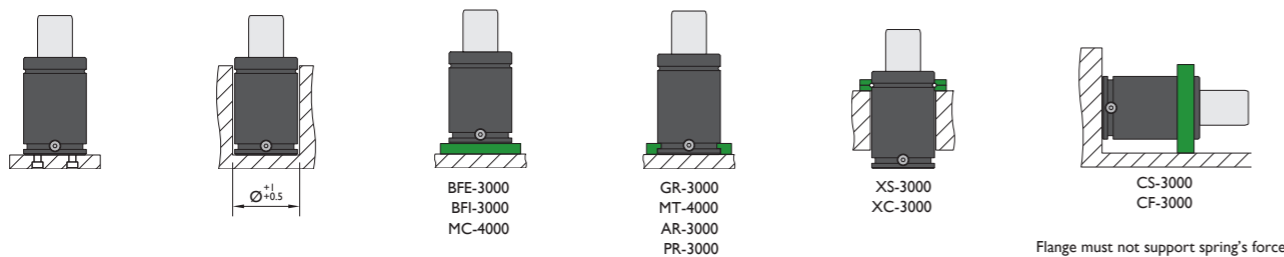
(2) alternative forces upon request

(3) ESK available for other strokes



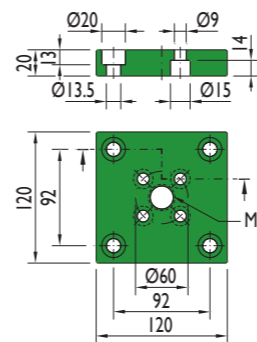
Pressure medium	N ₂	Working temperature	0-80°C	Min. security stroke	10%
Max. Charging pressure	140 bar	Temperature related force increase	+0.34%/°C	Repair Kit	KIT M-4000
Min. Charging pressure	25 bar	Max. working speed	1.6 m/s	Linkable	G1/8"

Mounting possibilities

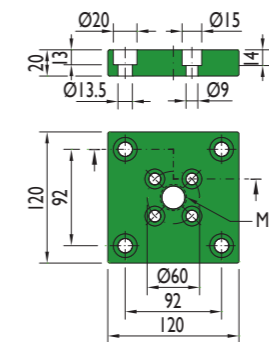


Flanges

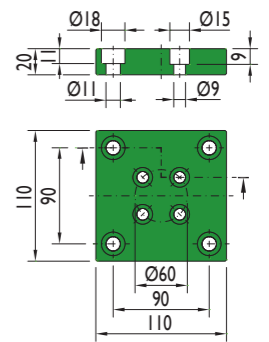
BFE-3000



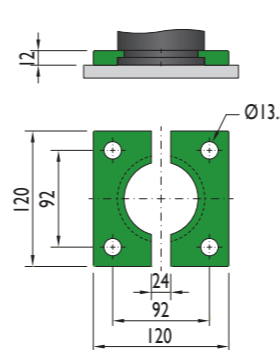
BFI-3000



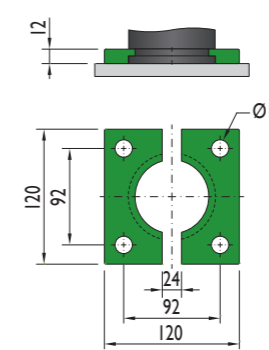
MC-4000



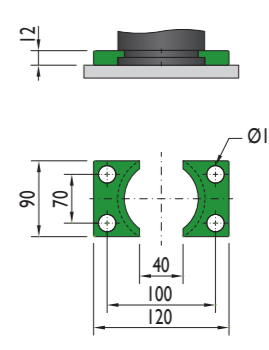
GR-3000



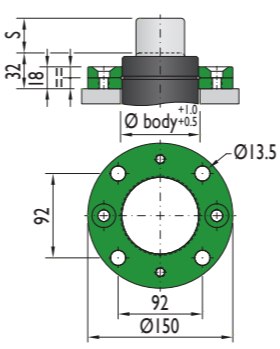
MT-4000



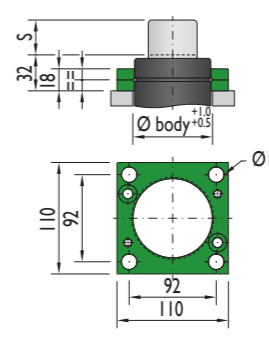
AR-3000



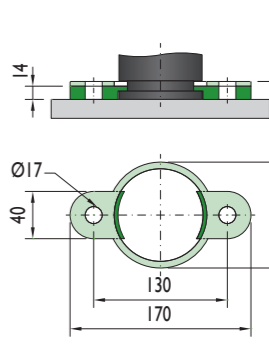
XS-3000



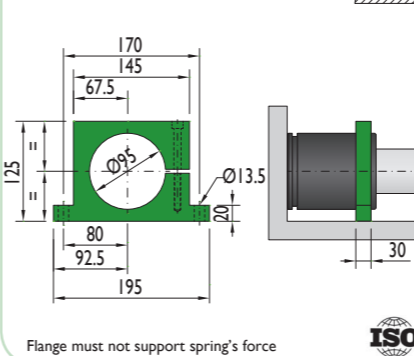
XC-3000



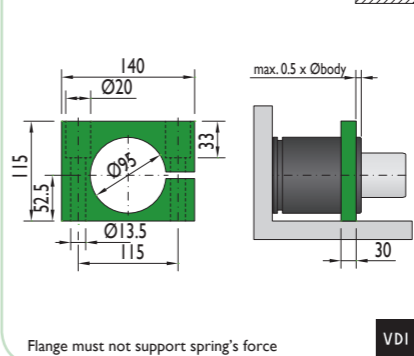
PR-3000



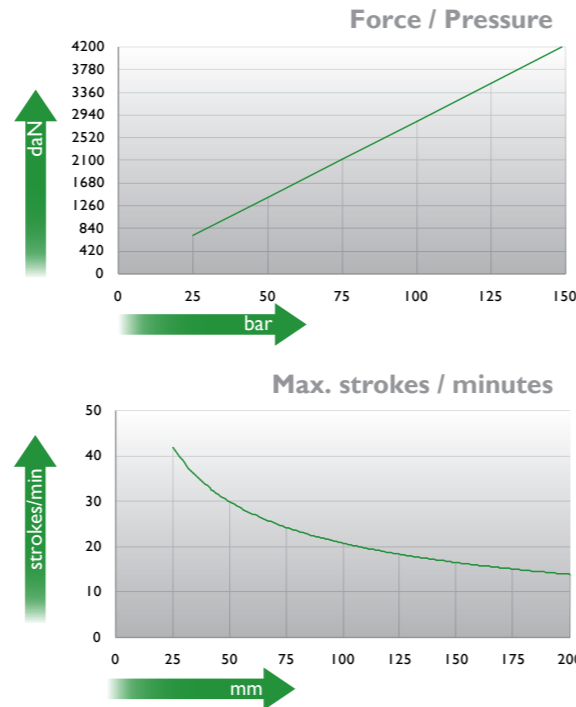
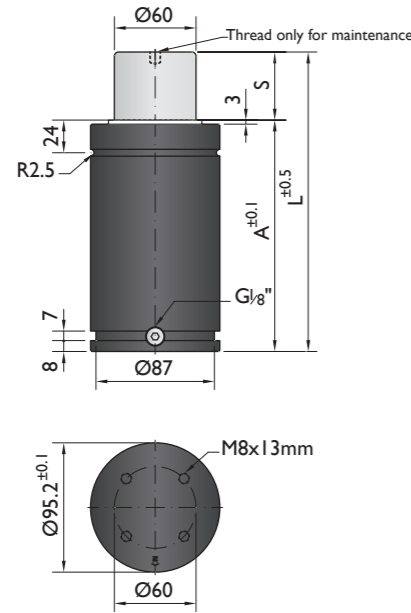
CS-3000



CF-3000



Special mounts available on
www.nitrogas.com



Ordering example: 4 x HD-4200-125

Order No.	S ⁽¹⁾ mm	L mm	A mm	F ₀ ⁽²⁾ daN	F daN	(3)	kg
HD-4200-25	25	170	145	4200	5500	No	6.18
HD-4200-38	38	196	158		5900	No	6.52
HD-4200-50	50	220	170		6100	No	7.20
HD-4200-63	63	246	183		6400	No	7.56
HD-4200-80	80	280	200		6900	Yes	7.95
HD-4200-100	100	320	220		7100	Yes	8.22
HD-4200-125	125	370	245		7300	Yes	8.95
HD-4200-160	160	440	280		7500	Yes	10.14
HD-4200-200	200	520	320		7600	Yes	11.05
HD-4200-250	250	620	370		7700	Yes	11.58
HD-4200-300	300	720	420	7800	Yes	12.65	

⁽¹⁾ other strokes under request

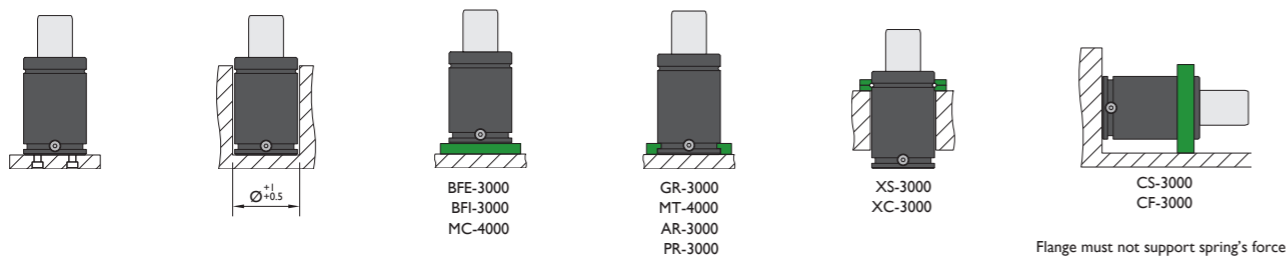
⁽²⁾ alternative forces upon request

⁽³⁾ ESK available for other strokes



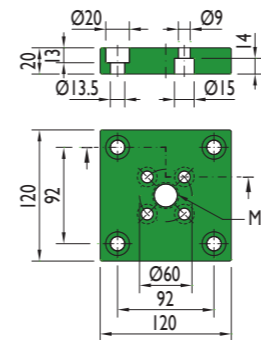
Pressure medium	N ₂	Working temperature	0-80°C	Min. security stroke	10%
Max. Charging pressure	150 bar	Temperature related force increase	+0.34%/°C	Repair Kit	KIT HD-4200
Min. Charging pressure	25 bar	Max. working speed	1.6 m/s	Linkable	GI/8"

Mounting possibilities

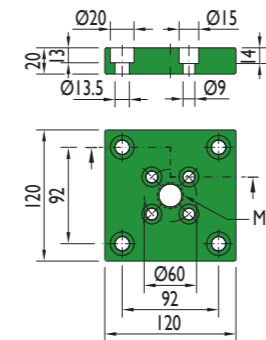


Flanges

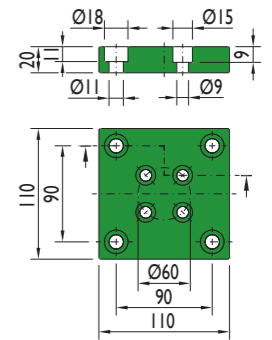
BFE-3000



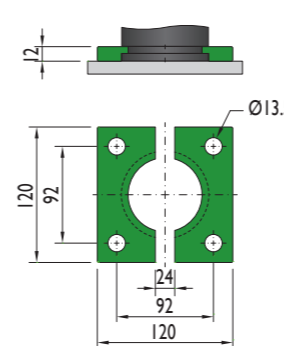
BFI-3000



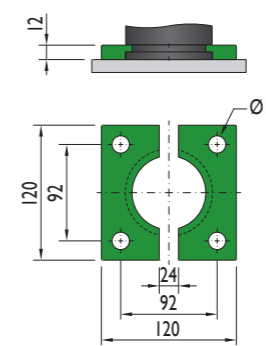
MC-4000



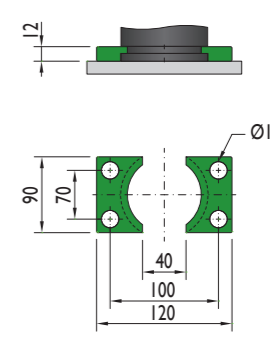
GR-3000



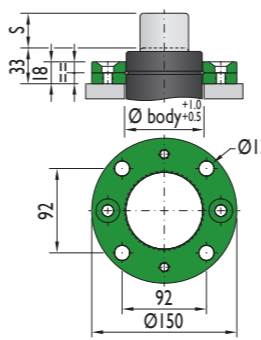
MT-4000



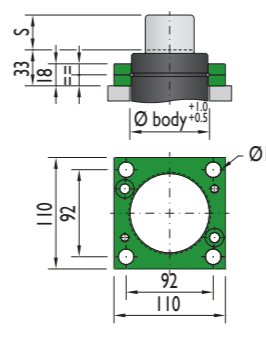
AR-3000



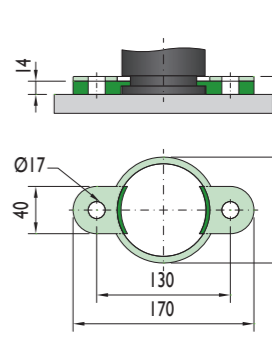
XS-3000



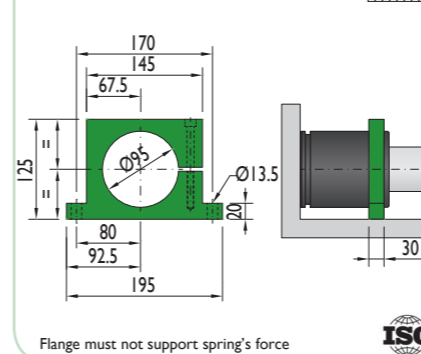
XC-3000



PR-3000



CS-3000



CF-3000

