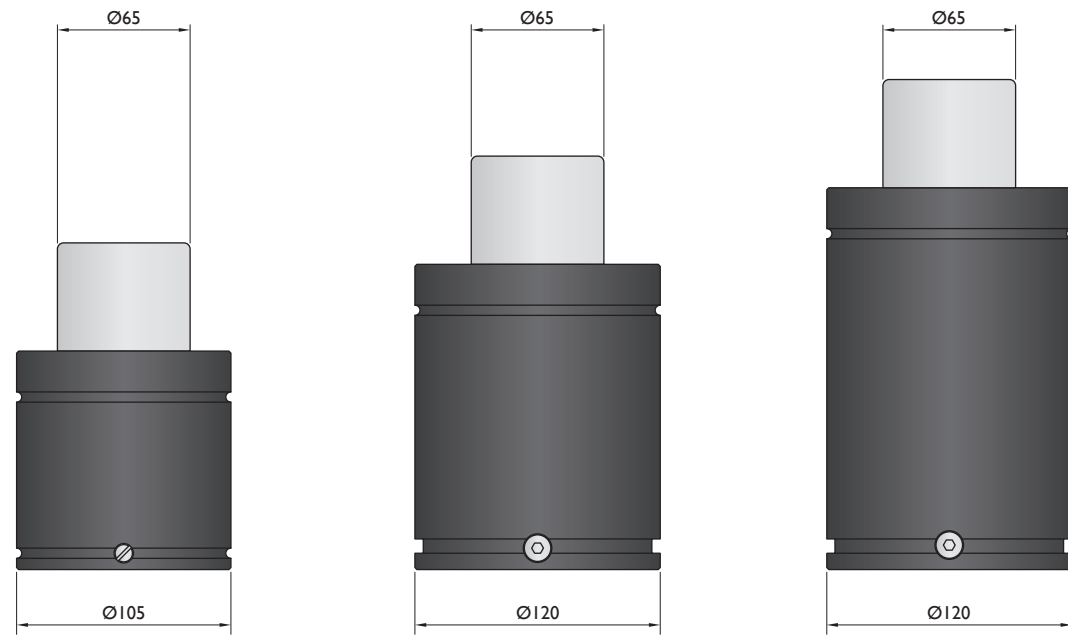
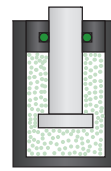


## Force 5000 daN

### Piston Rod Sealed gas springs



Model	KC-5000	HG-5000	G-5000
Initial F (daN)	5000	5000	5000
L max (mm)	2xStroke+60	2xStroke+102.5	2xStroke+140
Stroke (mm)	12-125	25-200	25-300

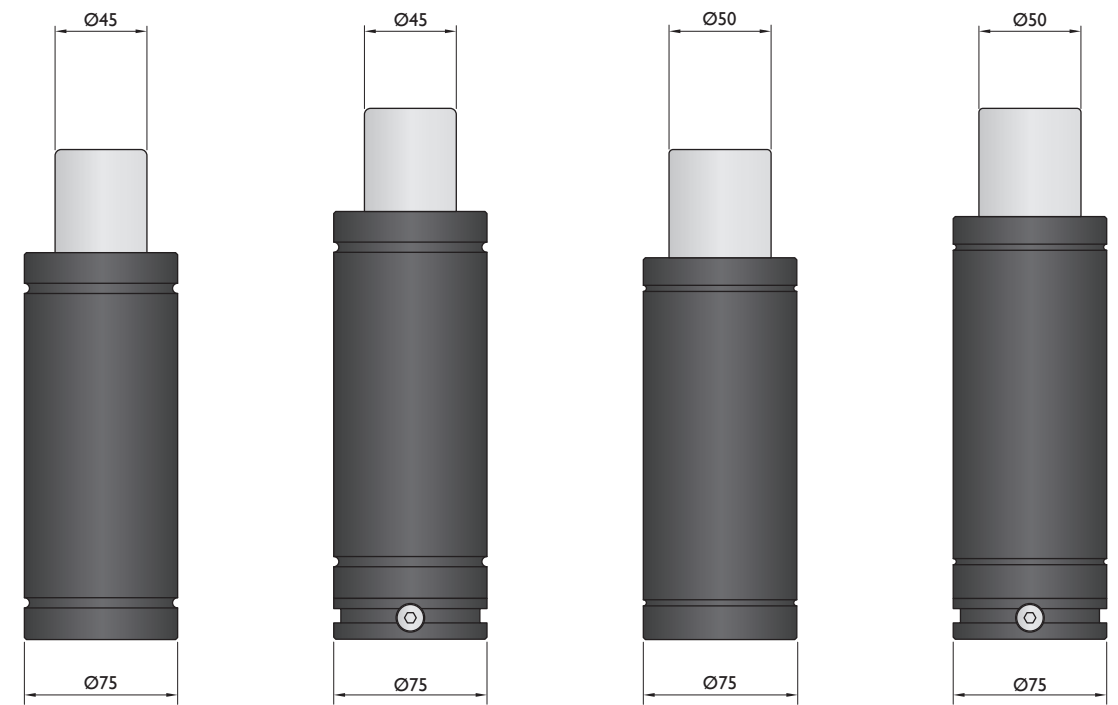
\* other strokes under request

### Standards

Model	KC-5000	HG-5000	G-5000
Standards	PED 97/23/EC ISO 11901 VDI 3003 CNOMO EM24.54.700	PED 97/23/EC ISO 11901 VDI 3003 CNOMO EM24.54.700	PED 97/23/EC ISO 11901 VDI 3003 CNOMO EM24.54.700

## Force 5000 daN

### Bore Sealed gas springs

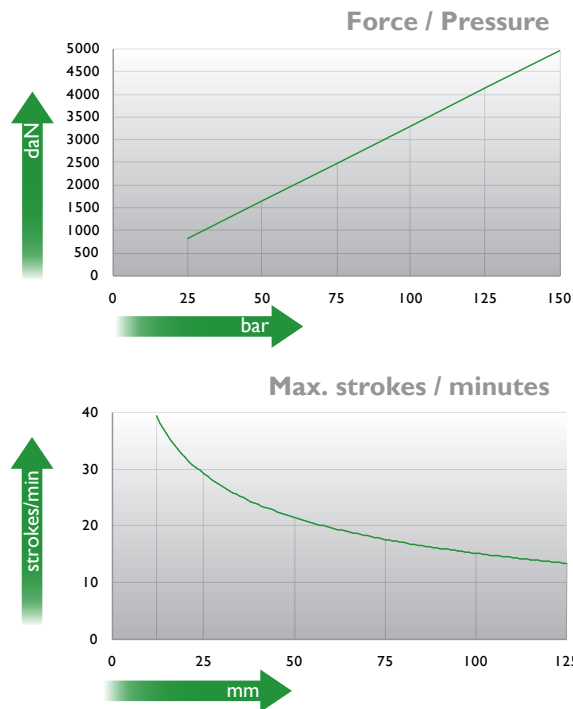
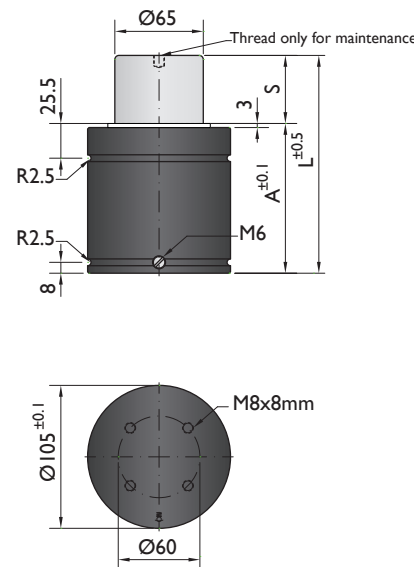


Model	T-4700	TC-4700	TS-4700	TSC-4700
Initial F (daN)	4700	4700	4700	4700
L max (mm)	80-240	100-260	80-273	100-293
Stroke (mm)	10-50	10-50	10-65	10-65

\* other strokes under request

### Standards

Model	T-4700	TC-4700	TS-4700	TSC-4700
Standards	PED 97/23/EC ISO 11901 VDI 3003 CNOMO EM24.54.700	PED 97/23/EC ISO 11901 VDI 3003 CNOMO EM24.54.700	PED 97/23/EC ISO 11901 VDI 3003 CNOMO EM24.54.700	PED 97/23/EC ISO 11901 VDI 3003 CNOMO EM24.54.700



Ordering example: 4 x KC-5000-125

Order No.	S <sup>(1)</sup> mm	L mm	A mm	F <sub>0</sub> <sup>(2)</sup> daN	F daN	(3)	kg
KC-5000-12	12	84	72	5000 (20°C, 150 bar)	7200	No	3.77
KC-5000-25	25	110	85		7800	No	4.20
KC-5000-38	38	136	98		7900	No	4.56
KC-5000-50	50	160	110		8800	Yes	4.90
KC-5000-63	63	186	123		8700	Yes	5.40
KC-5000-80	80	220	140		8700	Yes	5.96
KC-5000-100	100	260	160		8700	Yes	6.74
KC-5000-125	125	310	185		8700	Yes	7.58

(1) other strokes under request

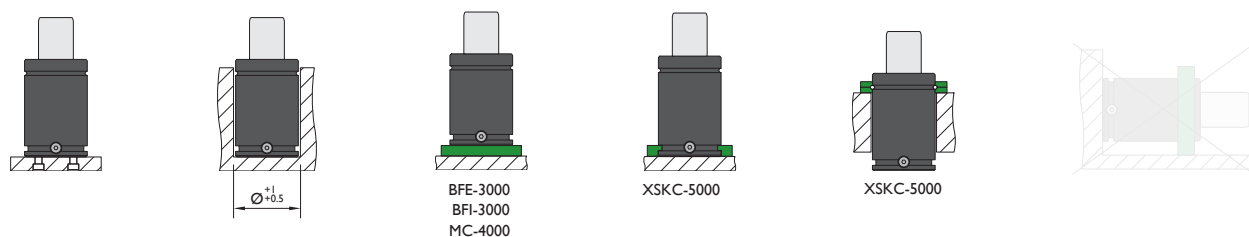
(2) alternative forces upon request

(3) ESK available for other strokes



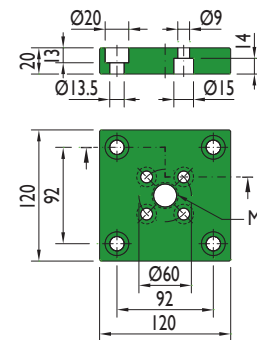
Pressure medium	N <sub>2</sub>	Working temperature	0-80°C	Min. security stroke	10%
Max. Charging pressure	150 bar	Temperature related force increase	+0.34%/°C	Repair Kit	KIT KC-5000
Min. Charging pressure	25 bar	Max. working speed	1.6 m/s	Linkable	M6

### Mounting possibilities

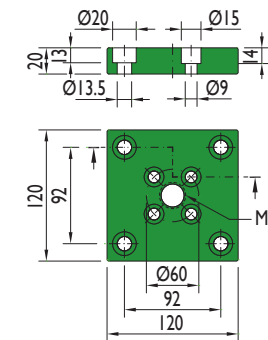


## Flanges

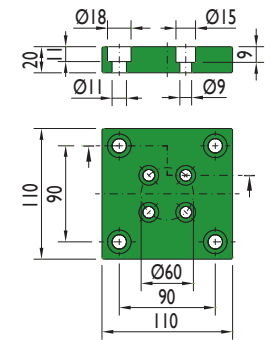
### BFE-3000



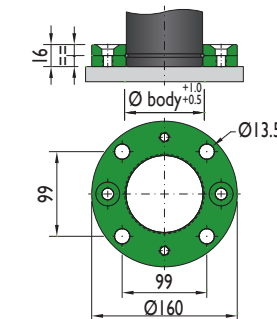
### BFI-3000



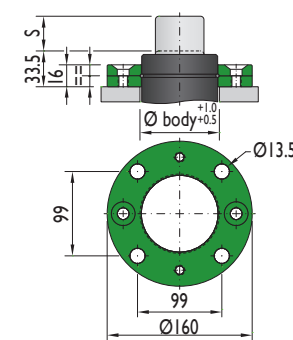
### MC-4000

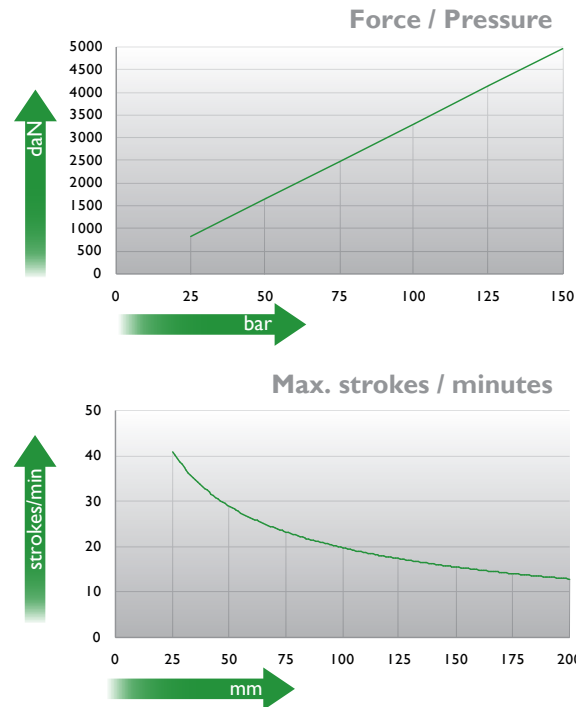
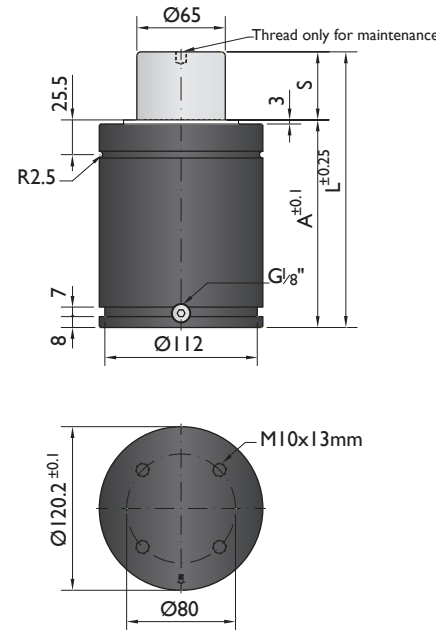


### XSKC-5000



### XSKC-5000





Ordering example: 4 x HG-5000-125

Order No.	S <sup>(1)</sup> mm	L mm	A mm	F <sub>0</sub> <sup>(2)</sup> daN	F daN	(3)	kg
HG-5000-25	25	152.5	127.5	5000	8000	No	9.04
HG-5000-38	37.5	177.5	140		8100	No	9.70
HG-5000-50	50	202.5	152.5		8200	No	10.35
HG-5000-63	62.5	227.5	165		8300	No	11.01
HG-5000-80	80	262.5	182.5		8300	Yes	11.93
HG-5000-100	100	302.5	202.5		8400	Yes	12.98
HG-5000-125	125	352.5	227.5	8400	Yes	14.30	
HG-5000-160	160	422.5	262.5	8400	Yes	16.14	
HG-5000-200	200	502.5	302.5	8500	Yes	18.25	

other strokes under request

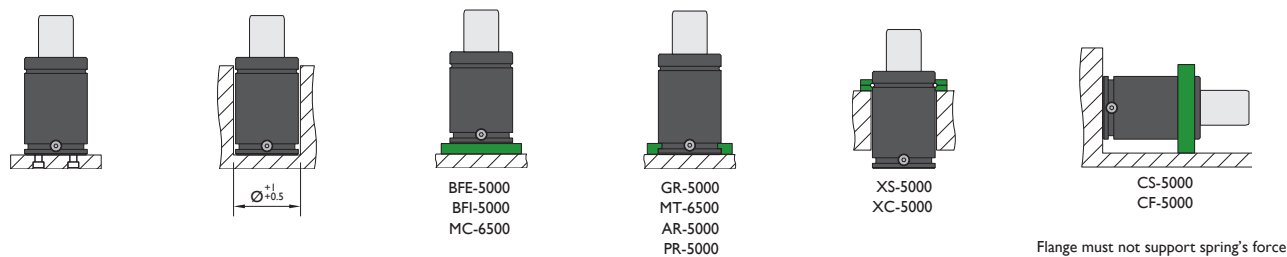
alternative forces upon request

ESK available for other strokes



Pressure medium	N <sub>2</sub>	Working temperature	0-80°C	Min. security stroke	10%
Max. Charging pressure	150 bar	Temperature related force increase	+0.34%/°C	Repair Kit	KIT HG-5000
Min. Charging pressure	25 bar	Max. working speed	1.6 m/s	Linkable	G1/8"

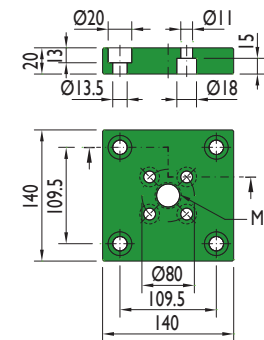
### Mounting possibilities



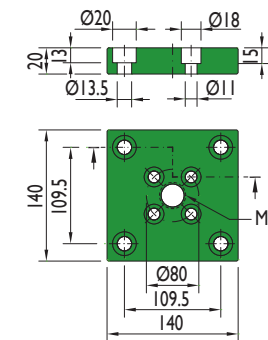
Flange must not support spring's force

## Flanges

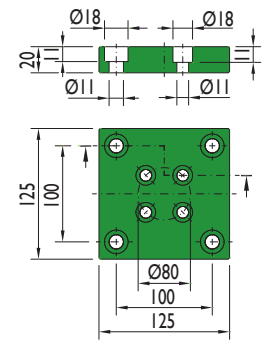
### BFE-5000



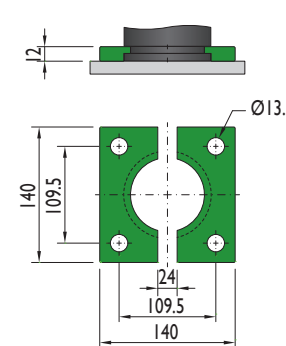
### BFI-5000



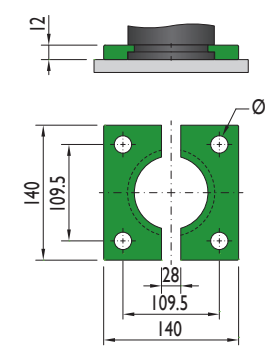
### MC-6500



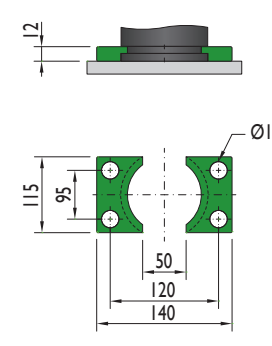
### GR-5000



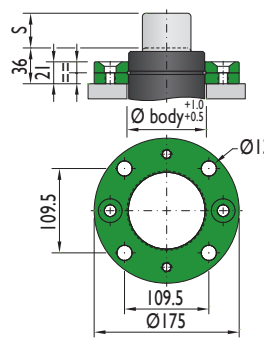
### MT-6500



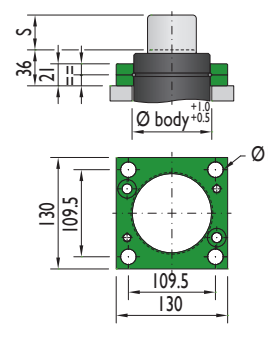
### AR-5000



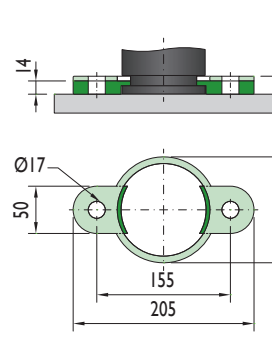
### XS-5000



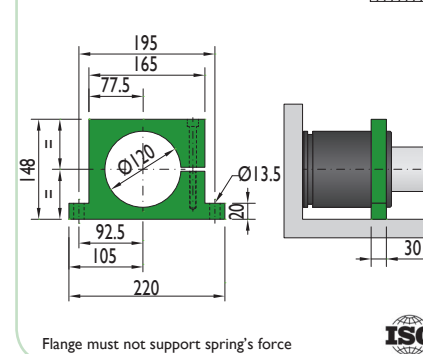
### XC-5000



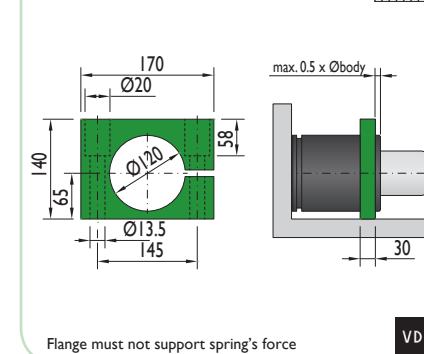
### PR-5000



### CS-5000



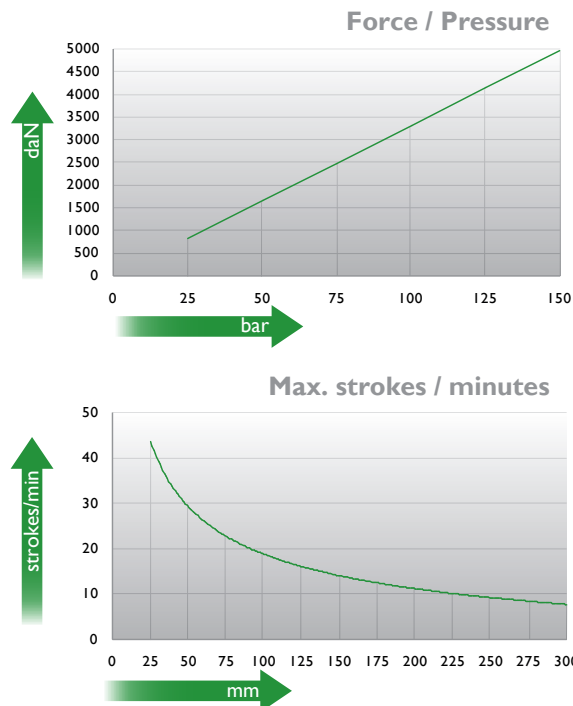
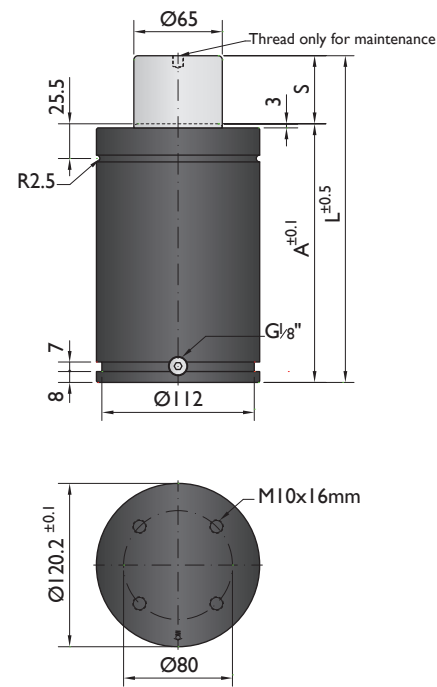
### CF-5000





CNOMO  
EM24.54.700

PSA  
E24.54.815.G



Ordering example: 4 x G-5000-125

Order No.	S <sup>(1)</sup> mm	L mm	A mm	F <sub>0</sub> <sup>(2)</sup> daN	F daN	ESK <sup>(3)</sup>	kg
G-5000-25	25	190	165	5000	5900	No	10.76
G-5000-38	38.1	216.2	178.1		6200	No	11.33
G-5000-50	50	240	190		6400	No	11.80
G-5000-63	63.5	267	203.5		6600	No	12.26
G-5000-80	80	300	220		6700	No	13.21
G-5000-100	100	340	240		7200	Yes	14.86
G-5000-125	125	390	265		7300	Yes	16.25
G-5000-160	160	460	300		7400	Yes	17.54
G-5000-200	200	540	340	7500	Yes	21.16	
G-5000-250	250	640	390	7500	Yes	22.61	
G-5000-300	300	740	440	7600	Yes	26.51	

<sup>(1)</sup> other strokes under request

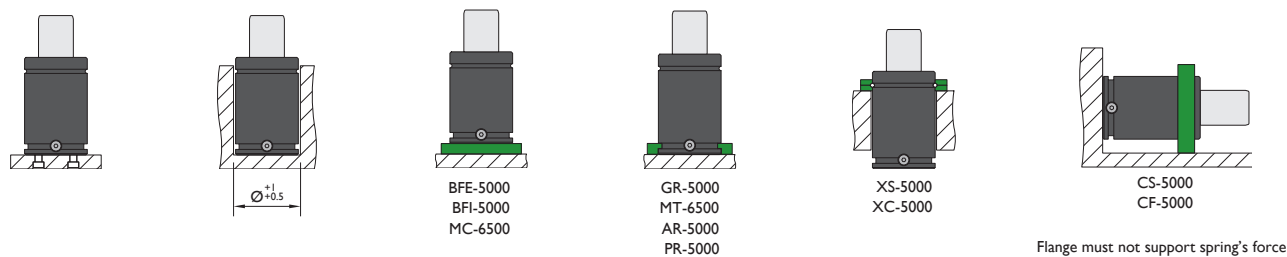
<sup>(2)</sup> alternative forces upon request

<sup>(3)</sup> ESK available for other strokes



Pressure medium	N <sub>2</sub>	Working temperature	0-80°C	Min. security stroke	10%
Max. Charging pressure	150 bar	Temperature related force increase	+0.34%/°C	Repair Kit	KIT G-5000
Min. Charging pressure	25 bar	Max. working speed	1.6 m/s	Linkable	G1/8"

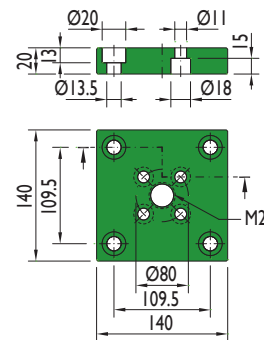
### Mounting possibilities



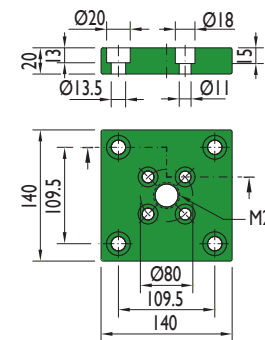
Flange must not support spring's force

## Flanges

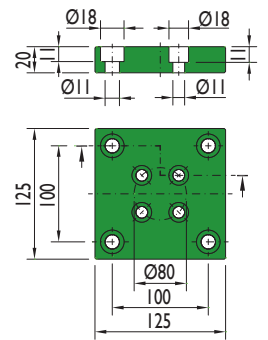
### BFE-5000



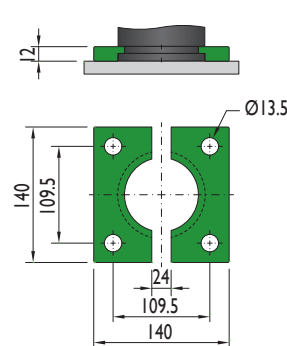
### BFI-5000



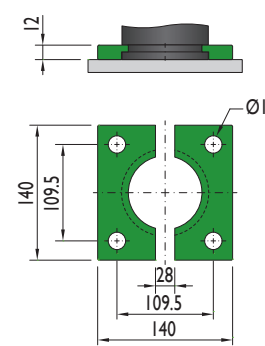
### MC-6500



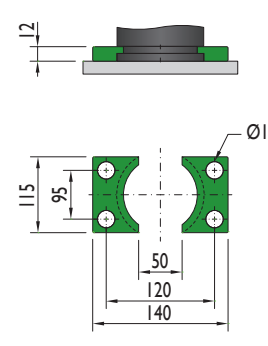
### GR-5000



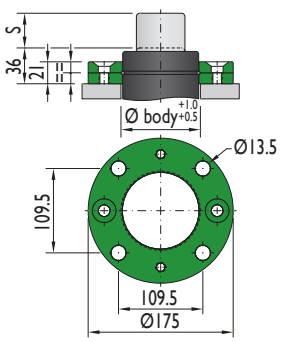
### MT-6500



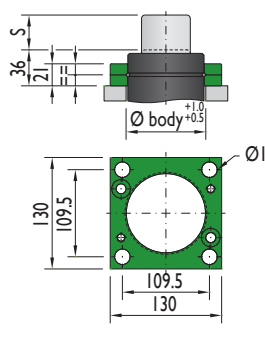
### AR-5000



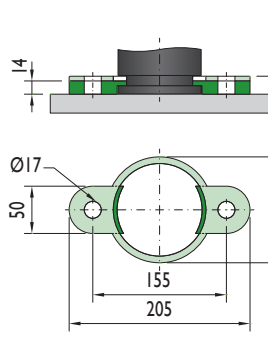
### XS-5000



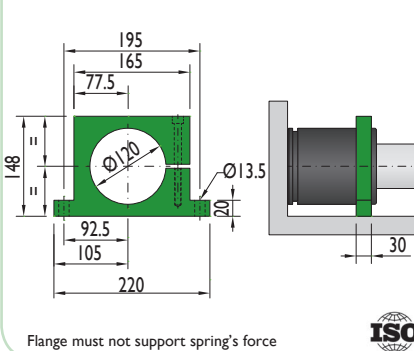
### XC-5000



### PR-5000

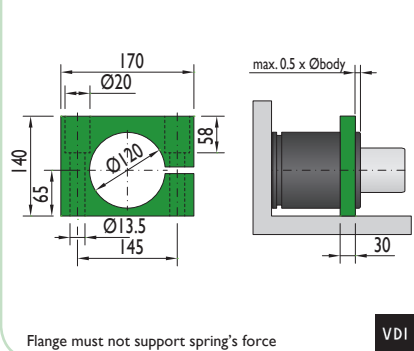


### CS-5000



Flange must not support spring's force

### CF-5000

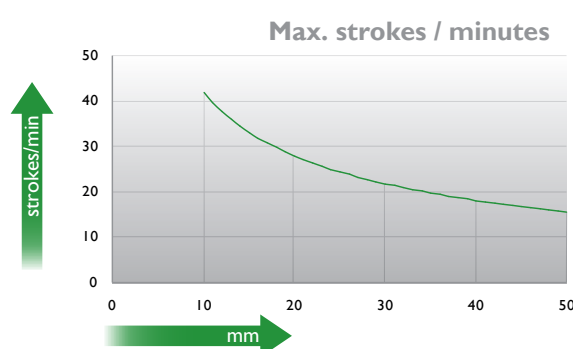
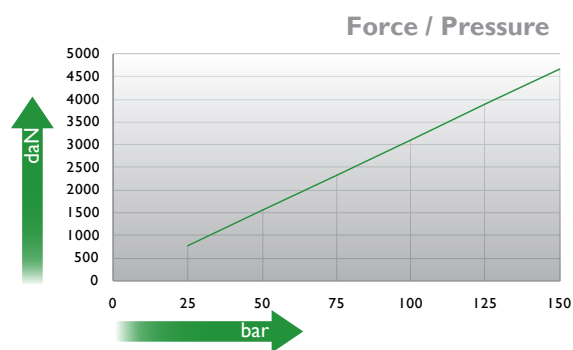
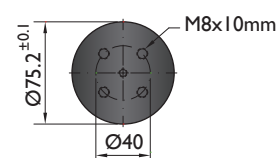
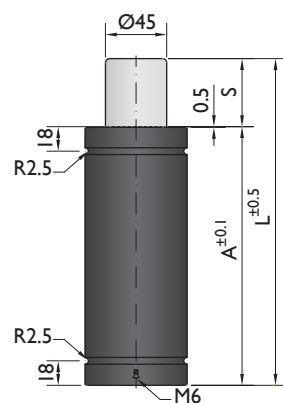


Flange must not support spring's force

Special mounts available on  
[www.nitrogas.com](http://www.nitrogas.com)



PSA  
E24.54.815.G



Ordering example: 4 x T-4700-50

Order No.	S <sup>(1)</sup> mm	L mm	A mm	F <sub>0</sub> <sup>(2)</sup> daN (20°C, 150 bar)	F daN	<sup>(3)</sup>	kg
T-4700-10	10	80	70	4700	6800	No	1.55
T-4700-16	16	106	90		6800	No	1.80
T-4700-25	25	135	110		7000	No	2.07
T-4700-32	32	167	135		6800	No	2.38
T-4700-40	40	200	160		6800	No	2.72
T-4700-50	50	240	190		6800	No	3.14

<sup>(1)</sup> other strokes under request

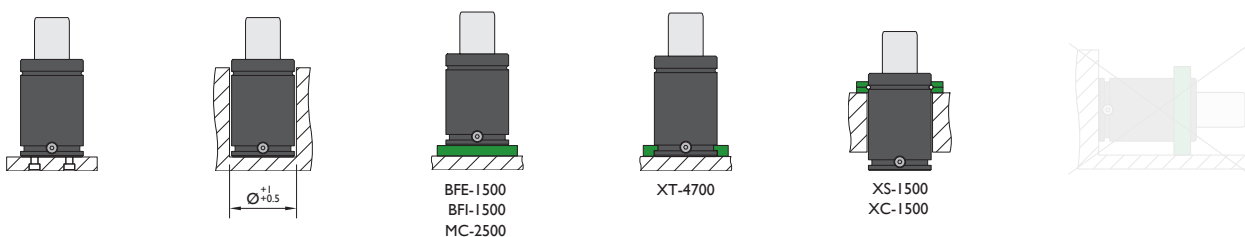
<sup>(2)</sup> alternative forces upon request

<sup>(3)</sup> ESK under request



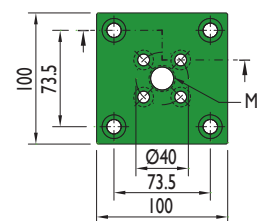
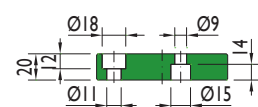
Pressure medium	N <sub>2</sub>	Working temperature	0-80°C	Min. security stroke	10%
Max. Charging pressure	150 bar	Temperature related force increase	+0.34%/°C	Repair Kit	KIT T-4700
Min. Charging pressure	25 bar	Max. working speed	0.5 m/s	Linkable	No

### Mounting possibilities

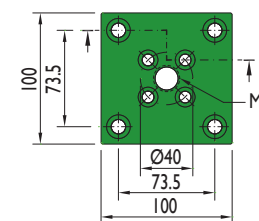
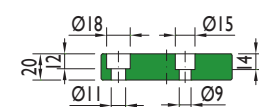


## Flanges

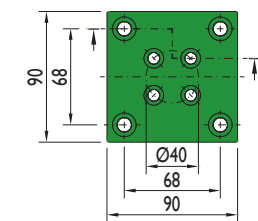
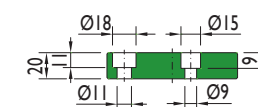
### BFE-1500



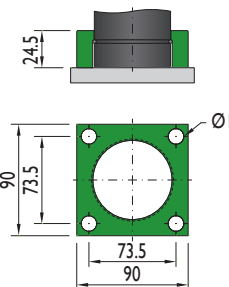
### BFI-1500



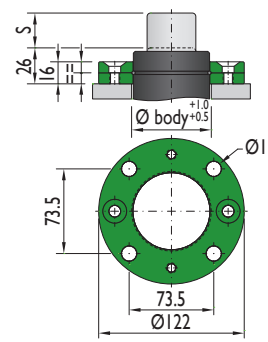
### MC-2500



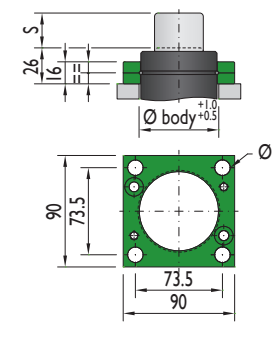
### XT-4700

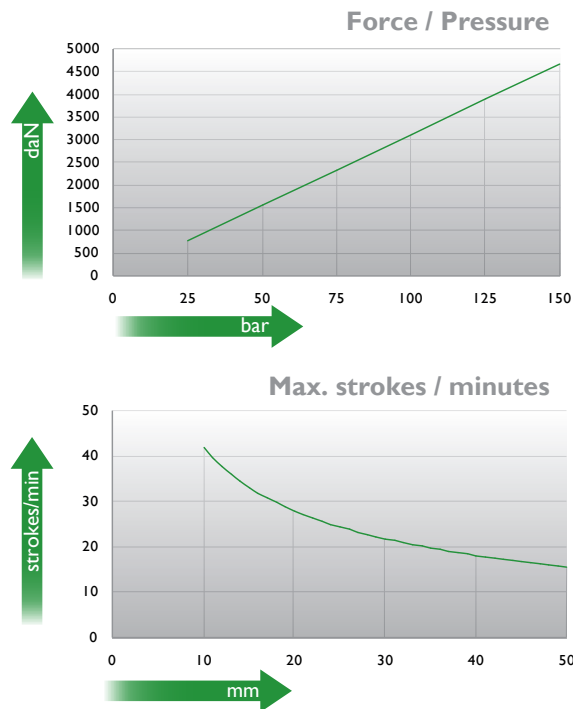
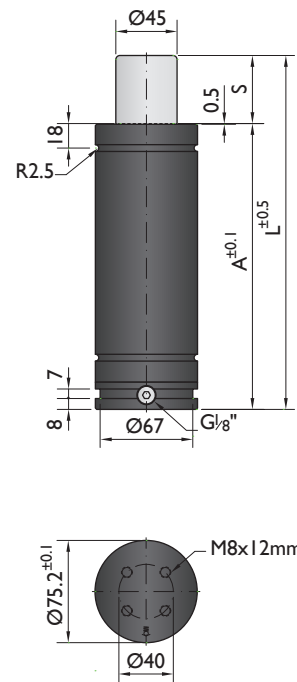


### XS-1500



### XC-1500





Ordering example: 4 x TC-4700-50

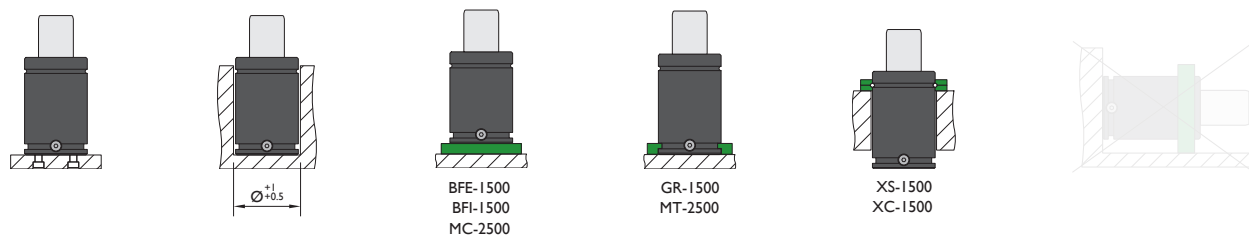
Order No.	S <sup>(1)</sup> mm	L mm	A mm	F <sub>0</sub> <sup>(2)</sup> daN (20°C, 150 bar)	F daN	<sup>(3)</sup>	kg
TC-4700-10	10	100	90	4700	6800	No	2.11
TC-4700-16	16	126	110		6800	No	2.36
TC-4700-25	25	155	130		7000	No	2.63
TC-4700-32	32	187	155		6800	No	2.94
TC-4700-40	40	220	180		6800	No	3.28
TC-4700-50	50	260	210		6800	No	2.70

<sup>(1)</sup> other strokes under request     
 <sup>(2)</sup> alternative forces upon request     
 <sup>(3)</sup> ESK under request



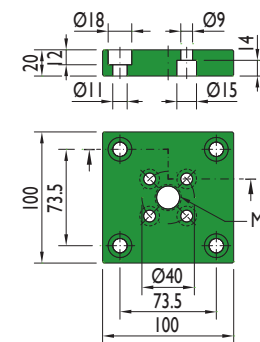
Pressure medium	N <sub>2</sub>	Working temperature	0-80°C	Min. security stroke	10%
Max. Charging pressure	150 bar	Temperature related force increase	+0.34%/°C	Repair Kit	KIT TC-4700
Min. Charging pressure	25 bar	Max. working speed	0.5 m/s	Linkable	G1/8"

### Mounting possibilities

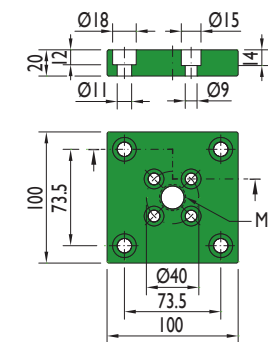


## Flanges

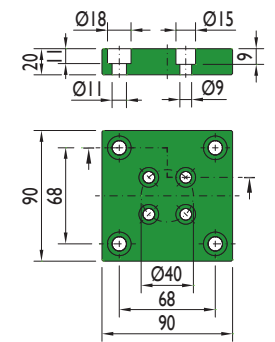
### BFE-1500



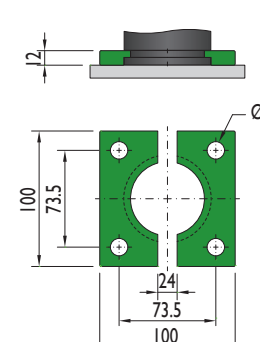
### BFI-1500



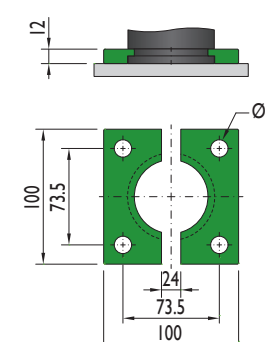
### MC-2500



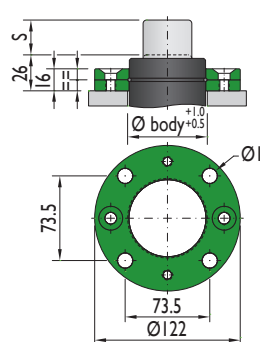
### GR-1500



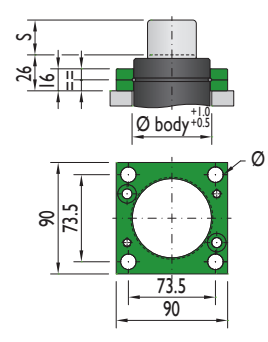
### MT-2500



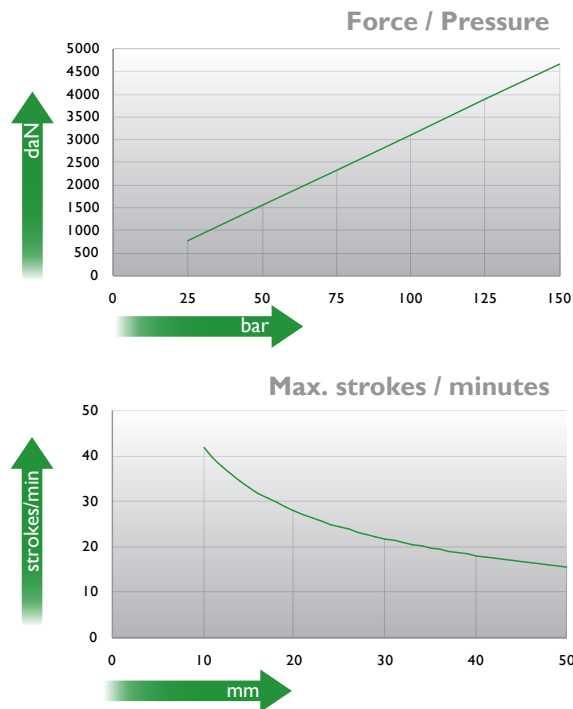
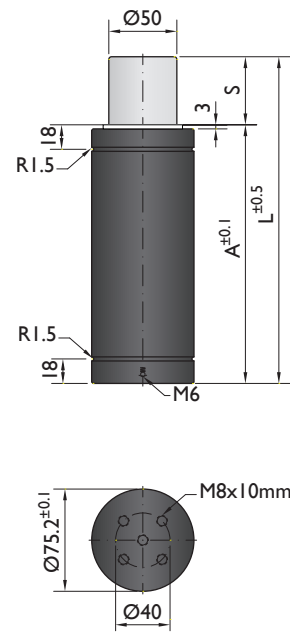
### XS-1500



### XC-1500







Ordering example: 4 x TS-4700-50

Order No.	S <sup>(1)</sup> mm	L mm	A mm	F <sub>0</sub> <sup>(2)</sup> daN	F daN	<sup>(3)</sup>	kg
TS-4700-10	10	80	70	4700 (20°C, 150 bar)	6800	No	1.55
TS-4700-16	16	106	90		6800	No	1.80
TS-4700-25	25	135	110		7000	No	2.07
TS-4700-32	32	167	135		6800	No	2.38
TS-4700-40	40	200	160		6800	No	2.72
TS-4700-50	50	240	190		6800	No	3.14
TS-4700-65	65	273	208		7000	No	3.33

<sup>(1)</sup> other strokes under request

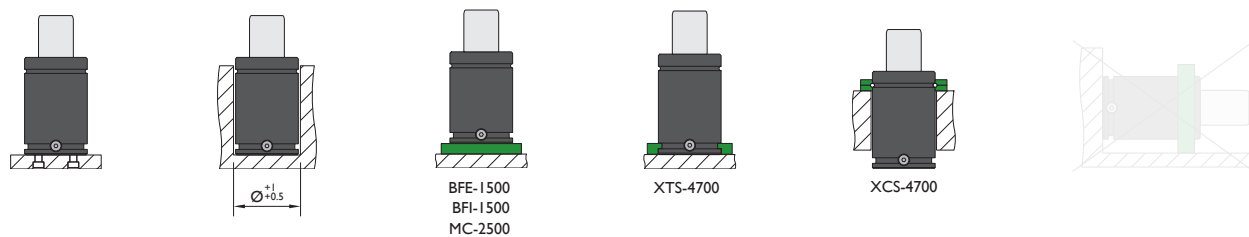
<sup>(2)</sup> alternative forces upon request

<sup>(3)</sup> ESK under request



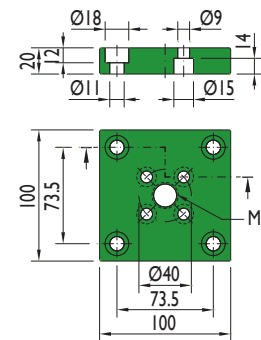
Pressure medium	N <sub>2</sub>	Working temperature	0-80°C	Min. security stroke	10%
Max. Charging pressure	150 bar	Temperature related force increase	+0.34%/°C	Repair Kit	KIT TS-4700
Min. Charging pressure	25 bar	Max. working speed	0.5 m/s	Linkable	No

### Mounting possibilities

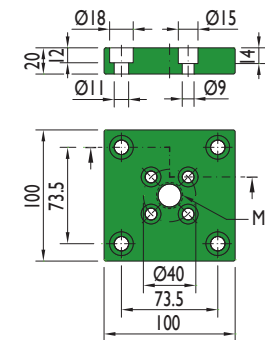


## Flanges

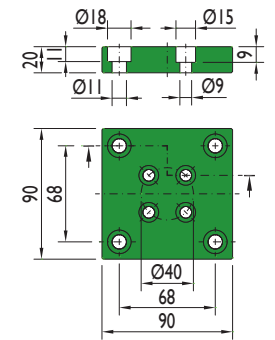
### BFE-1500



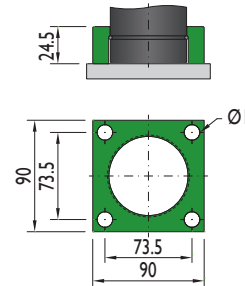
### BFI-1500



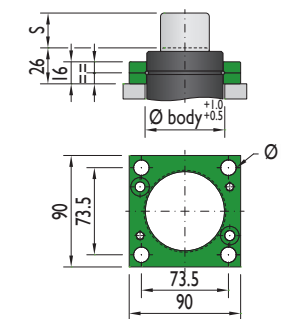
### MC-2500

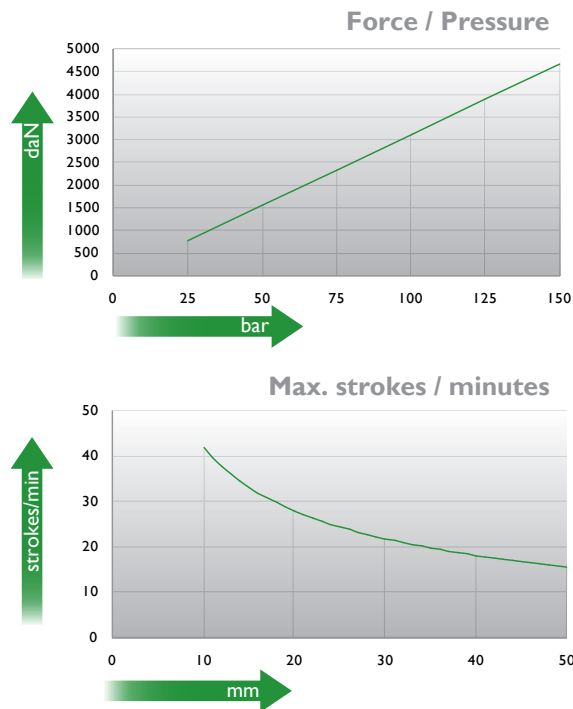
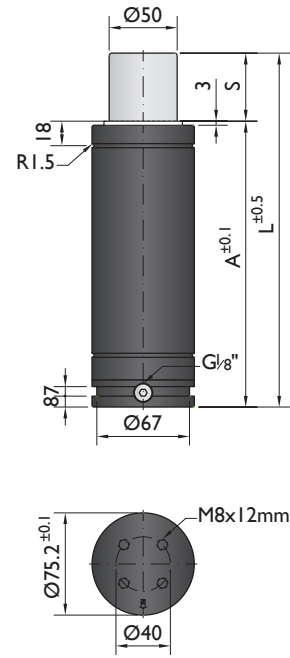


### XTS-4700



### XCS-4700





Ordering example: 4 x TSC-4700-65

Order No.	S <sup>(1)</sup> mm	L mm	A mm	F <sub>0</sub> <sup>(2)</sup> daN (20°C, 150 bar)	F daN	<sup>(3)</sup>	kg
TSC-4700-10	10	100	90	4700	6800	No	2.11
TSC-4700-16	16	126	110		6800	No	2.36
TSC-4700-25	25	155	130		7000	No	2.63
TSC-4700-32	32	187	155		6800	No	2.94
TSC-4700-40	40	220	180		6800	No	3.28
TSC-4700-50	50	260	210		6800	No	2.70
TSC-4700-65	65	293	228	7000	No	3.98	

<sup>(1)</sup> other strokes under request

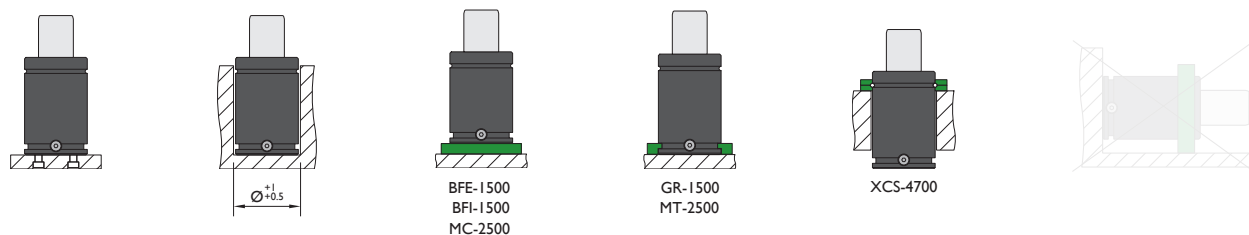
<sup>(2)</sup> alternative forces upon request

<sup>(3)</sup> ESK under request



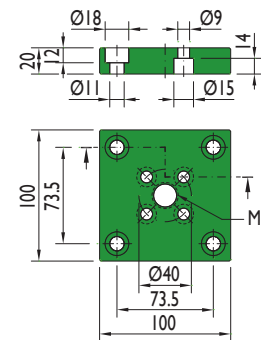
Pressure medium	N <sub>2</sub>	Working temperature	0-80°C	Min. security stroke	10%
Max. Charging pressure	150 bar	Temperature related force increase	+0.34%/°C	Repair Kit	KIT TSC-4700
Min. Charging pressure	25 bar	Max. working speed	0.5 m/s	Linkable	G1/8"

### Mounting possibilities

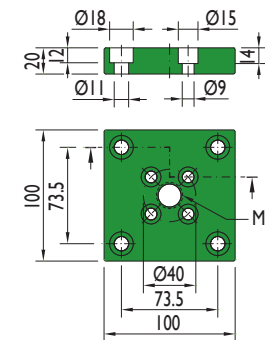


## Flanges

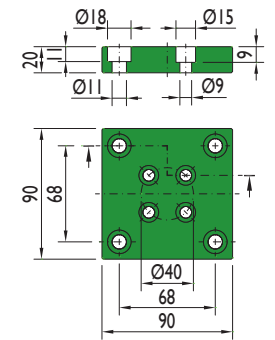
### BFE-1500



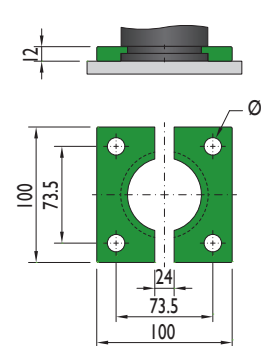
### BFI-1500



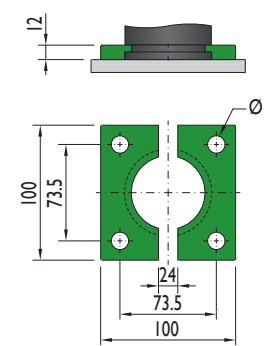
### MC-2500



### GR-1500



### MT-2500



### XCS-4700

