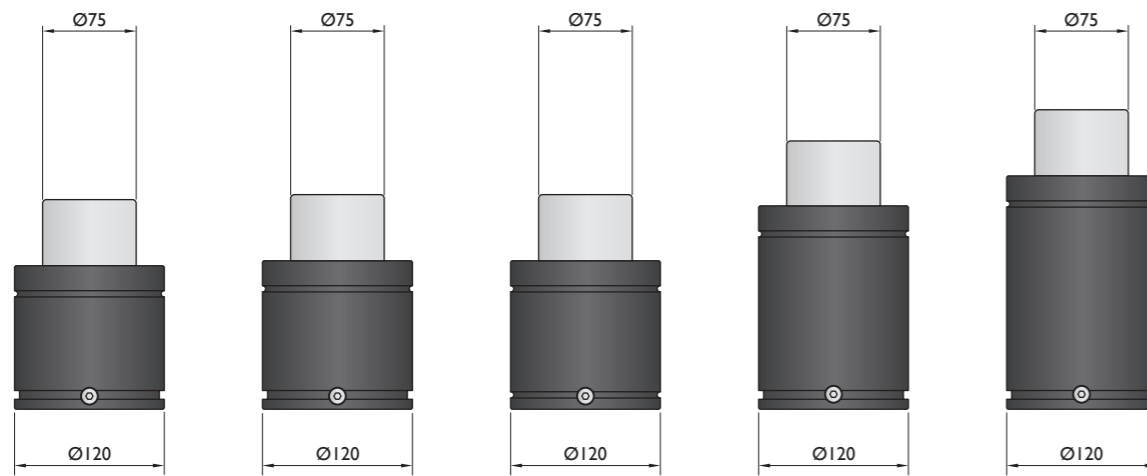
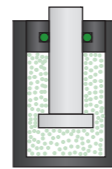


Force 6500 daN

Piston Rod Sealed
gas springs

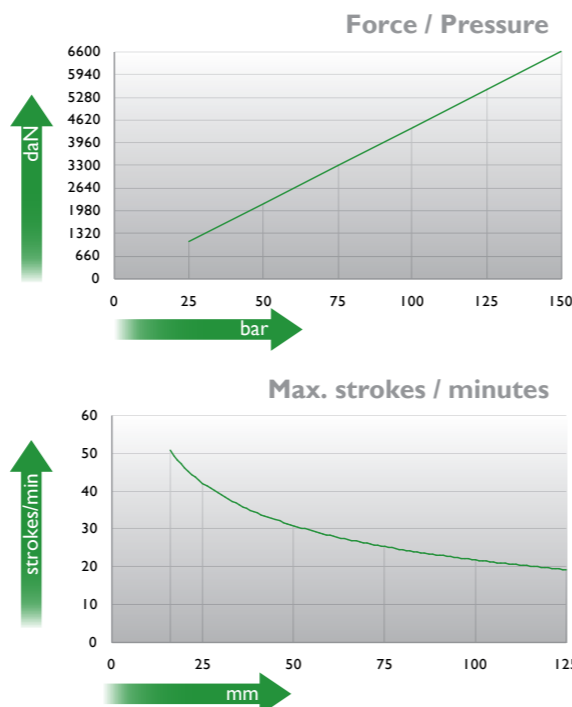
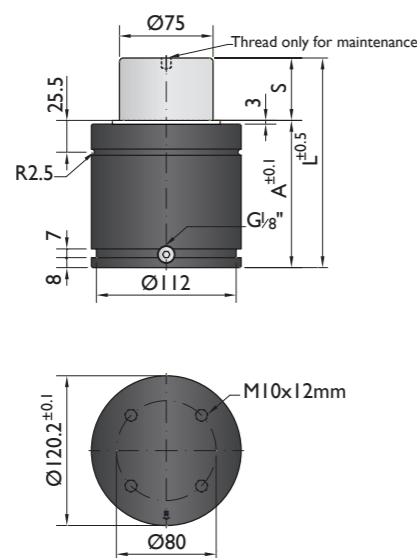


| Model | KP-6600 | NR-6600 | NT-6600 | M-6500 | HD-6600 |
|-----------------|-------------|-------------|-------------|--------------|--------------|
| Initial F (daN) | 6600 | 6600 | 6600 | 6400 | 6600 |
| L max (mm) | 2xStroke+68 | 2xStroke+72 | 2xStroke+72 | 2xStroke+115 | 2xStroke+140 |
| Stroke (mm) | 16-125 | 16-125 | 16-125 | 25-160 | 25-300 |

* other strokes under request

Standards

| PED 97/23/EC | PED 97/23/EC | PED 97/23/EC | PED 97/23/EC | PED 97/23/EC |
|----------------------|----------------------|----------------------|----------------------|----------------------|
| ISO 11901 | ISO 11901 | ISO 11901 | ISO 11901 | ISO 11901 |
| VDI 3003 | VDI 3003 | VDI 3003 | VDI 3003 | VDI 3003 |
| CNOMO EM24.54.700 | CNOMO EM24.54.700 | CNOMO EM24.54.700 | CNOMO EM24.54.700 | CNOMO EM24.54.700 |



Ordering example: 4 x KP-6600-125

| Order No. | S ⁽¹⁾ mm | L mm | A mm | F ₀ ⁽²⁾ daN | F daN | (3) | kg |
|-------------|------------------------|---------|---------|--------------------------------------|----------|-----|------|
| KP-6600-16 | 16 | 100 | 84 | | 9800 | No | 5.85 |
| KP-6600-19 | 19 | 106 | 87 | | 10000 | No | 5.98 |
| KP-6600-25 | 25 | 118 | 93 | | 10300 | No | 6.24 |
| KP-6600-32 | 32 | 132 | 100 | | 10600 | No | 6.52 |
| KP-6600-38 | 38 | 144 | 106 | | 10700 | No | 6.79 |
| KP-6600-50 | 50 | 168 | 118 | 6600 | 11500 | No | 7.58 |
| KP-6600-63 | 63 | 194 | 131 | | 11500 | Yes | 8.07 |
| KP-6600-75 | 75 | 218 | 143 | | 11100 | Yes | 8.30 |
| KP-6600-80 | 80 | 228 | 148 | | 11100 | Yes | 8.46 |
| KP-6600-100 | 100 | 268 | 168 | | 11000 | Yes | 9.10 |
| KP-6600-125 | 125 | 318 | 193 | | 10900 | Yes | 9.89 |

⁽¹⁾ other strokes under request

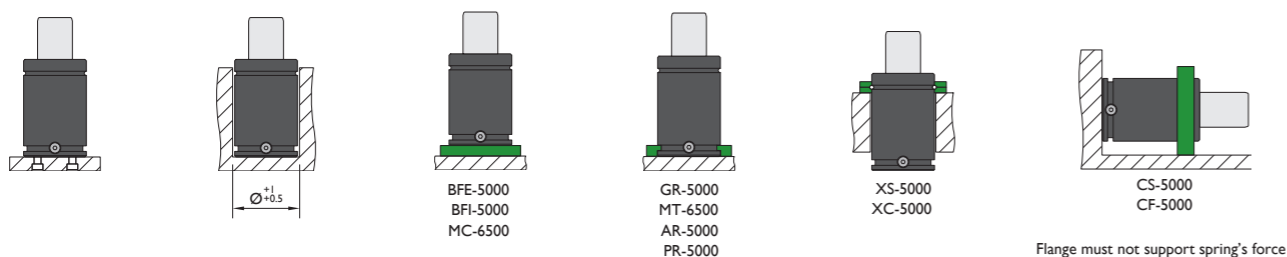
⁽²⁾ alternative forces upon request

⁽³⁾ ESK available for other strokes



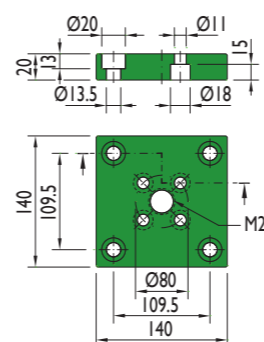
| | | | | | |
|------------------------|----------------|------------------------------------|-----------|----------------------|-------------|
| Pressure medium | N ₂ | Working temperature | 0-80°C | Min. security stroke | 10% |
| Max. Charging pressure | 150 bar | Temperature related force increase | +0.34%/°C | Repair Kit | KIT KP-6600 |
| Min. Charging pressure | 25 bar | Max. working speed | 1.6 m/s | Linkable | G1/8" |

Mounting possibilities

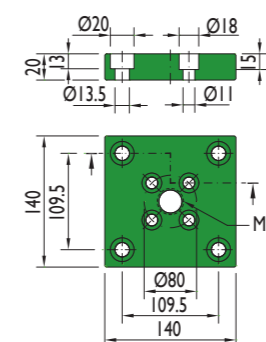


Flanges

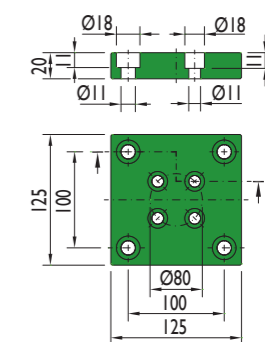
BFE-5000



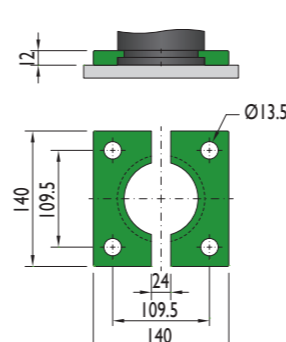
BFI-5000



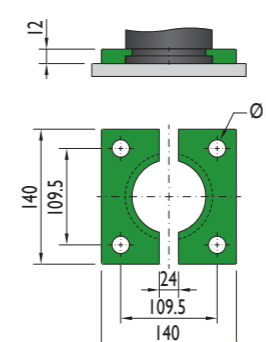
MC-6500



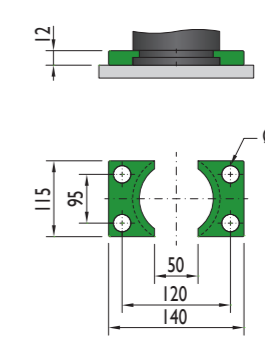
GR-5000



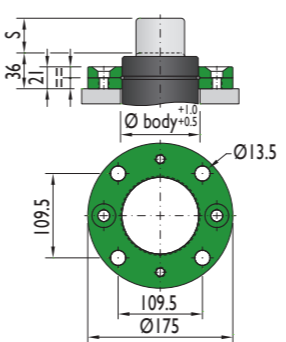
MT-6500



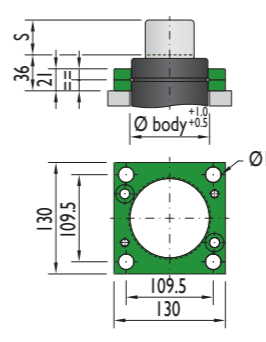
AR-5000



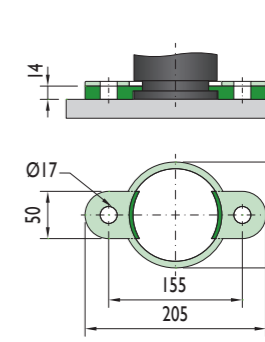
XS-5000



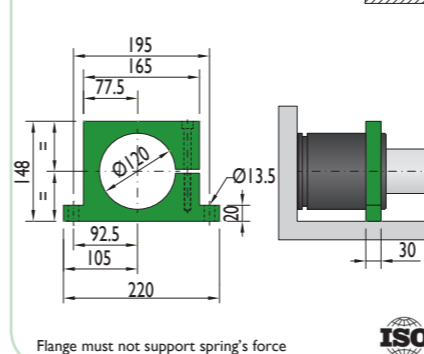
XC-5000



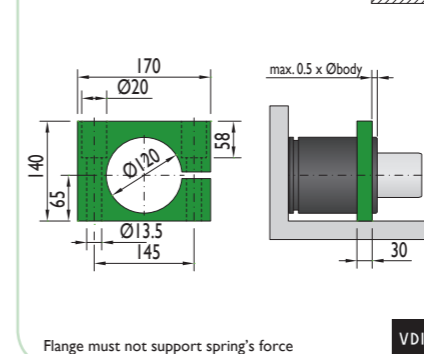
PR-5000

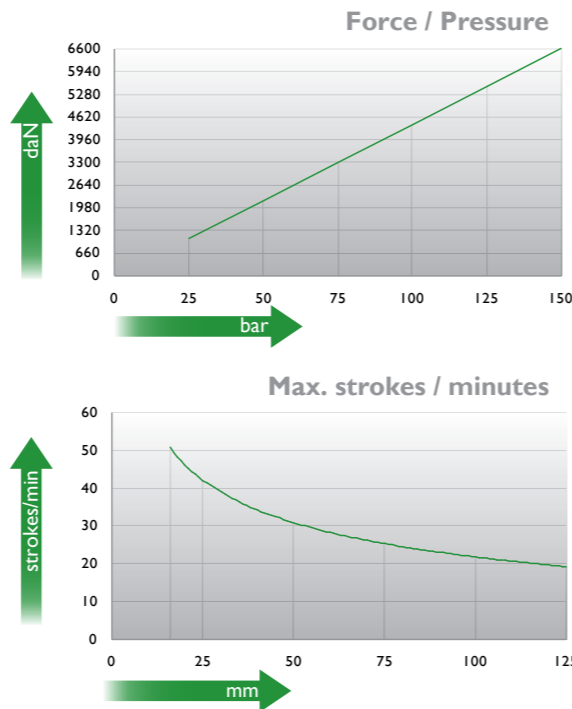
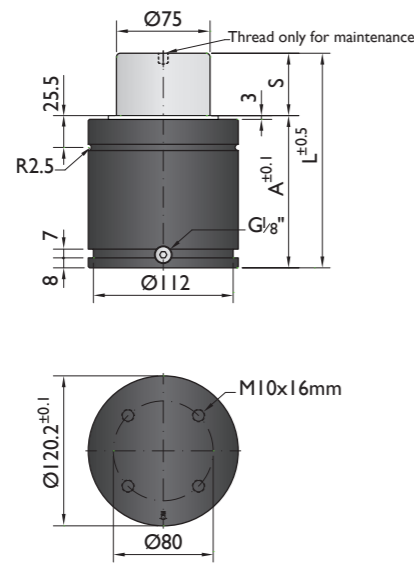


CS-5000



CF-5000





Ordering example: 4 x NR-6600-125

| Order No. | S ⁽¹⁾ mm | L mm | A mm | F ₀ ⁽²⁾ daN | F daN | (3) | kg |
|-------------|------------------------|---------|---------|--------------------------------------|----------|-----|-------|
| NR-6600-16 | 16 | 104 | 88 | | 8900 | No | 5.67 |
| NR-6600-19 | 19 | 110 | 91 | | 9100 | No | 5.81 |
| NR-6600-25 | 25 | 122 | 97 | | 9300 | No | 6.08 |
| NR-6600-32 | 32 | 136 | 104 | | 9600 | No | 6.41 |
| NR-6600-38 | 38 | 148 | 110 | | 9800 | No | 6.68 |
| NR-6600-50 | 50 | 172 | 122 | 6600 | 10000 | No | 7.21 |
| NR-6600-63 | 63 | 198 | 135 | | 10200 | Yes | 7.85 |
| NR-6600-75 | 75 | 222 | 147 | | 10300 | Yes | 7.31 |
| NR-6600-80 | 80 | 232 | 152 | | 10400 | Yes | 8.63 |
| NR-6600-100 | 100 | 272 | 172 | | 10500 | Yes | 9.56 |
| NR-6600-125 | 125 | 322 | 197 | | 10600 | Yes | 10.72 |

⁽¹⁾ other strokes under request

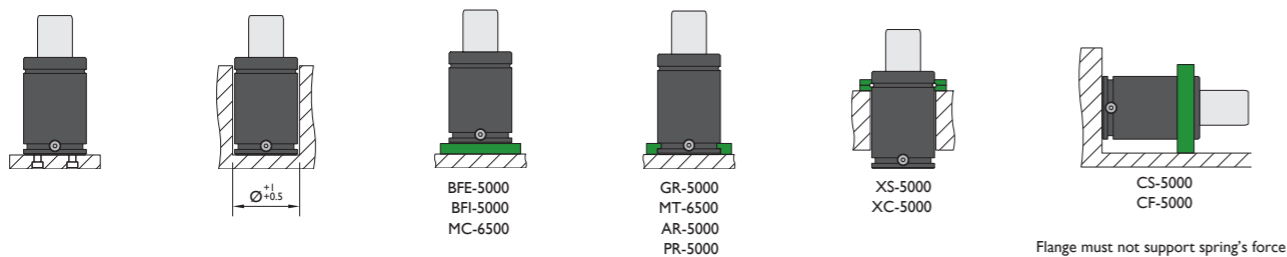
⁽²⁾ alternative forces upon request

⁽³⁾ ESK available for other strokes



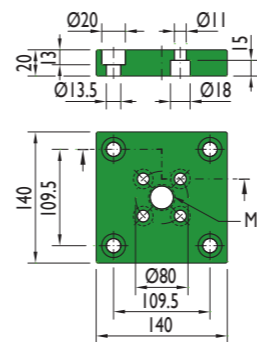
| | | | | | |
|------------------------|----------------|------------------------------------|-----------|----------------------|-------------|
| Pressure medium | N ₂ | Working temperature | 0-80°C | Min. security stroke | 10% |
| Max. Charging pressure | 150 bar | Temperature related force increase | +0.34%/°C | Repair Kit | KIT NR-6600 |
| Min. Charging pressure | 25 bar | Max. working speed | 1.6 m/s | Linkable | G1/8" |

Mounting possibilities

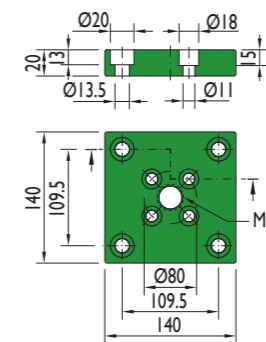


Flanges

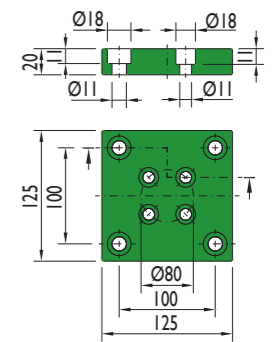
BFE-5000



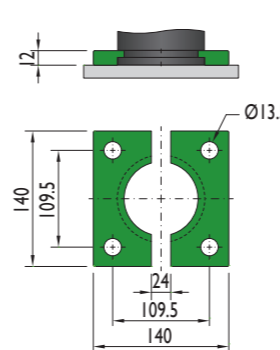
BFI-5000



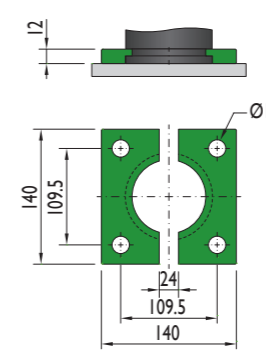
MC-6500



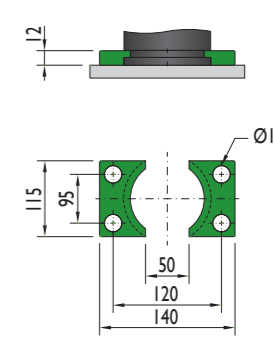
GR-5000



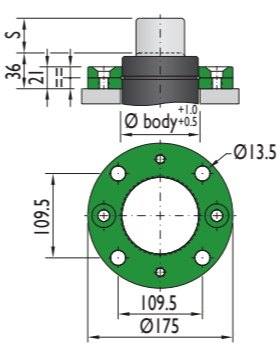
MT-6500



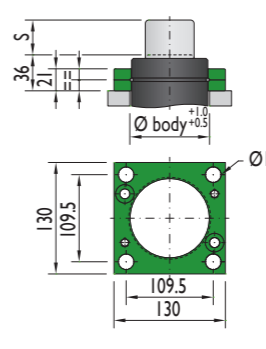
AR-5000



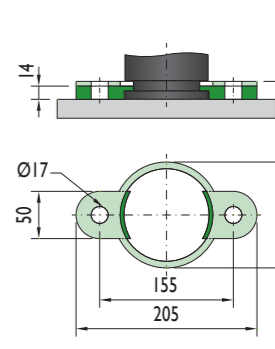
XS-5000



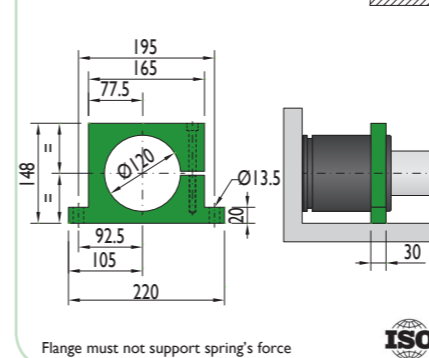
XC-5000



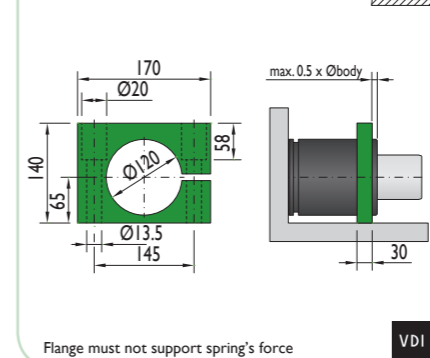
PR-5000

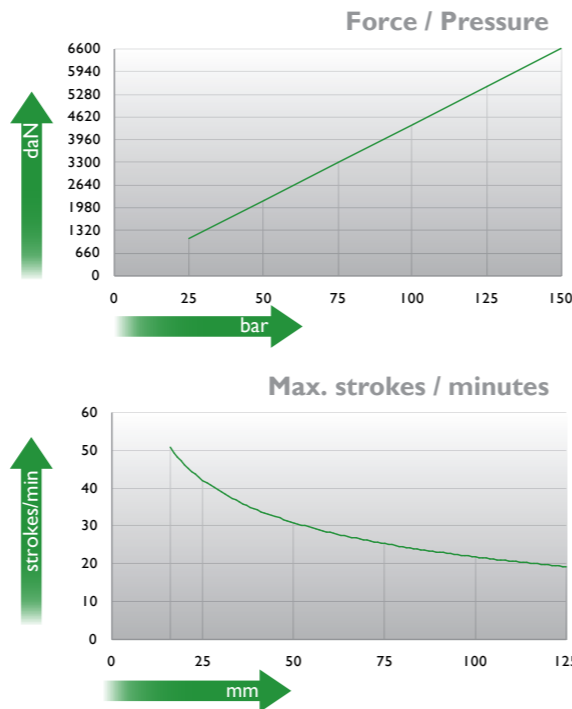
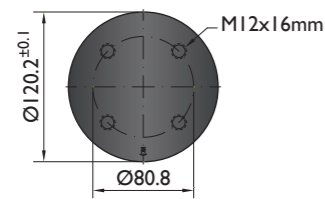
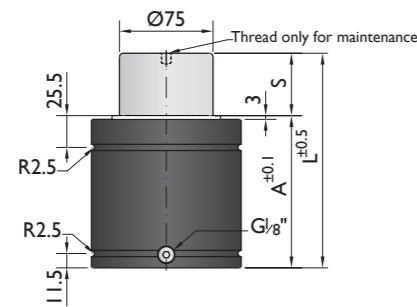


CS-5000



CF-5000





Ordering example: 4 x NT-6600-125

| Order No. | S ⁽¹⁾ mm | L mm | A mm | F ₀ ⁽²⁾ daN | F daN | (3) | kg |
|-------------|------------------------|---------|---------|--------------------------------------|----------|-----|-------|
| NT-6600-16 | 16 | 104 | 88 | | 8900 | No | 5.67 |
| NT-6600-19 | 19 | 110 | 91 | | 9100 | No | 5.81 |
| NT-6600-25 | 25 | 122 | 97 | | 9300 | No | 6.08 |
| NT-6600-32 | 32 | 136 | 104 | | 9600 | No | 6.41 |
| NT-6600-38 | 38 | 148 | 110 | | 9800 | No | 6.68 |
| NT-6600-50 | 50 | 172 | 122 | 6600 | 10000 | No | 7.21 |
| NT-6600-63 | 63 | 198 | 135 | | 10200 | Yes | 7.85 |
| NT-6600-75 | 75 | 222 | 147 | | 10300 | Yes | 7.31 |
| NT-6600-80 | 80 | 232 | 152 | | 10400 | Yes | 8.63 |
| NT-6600-100 | 100 | 272 | 172 | | 10500 | Yes | 9.56 |
| NT-6600-125 | 125 | 322 | 197 | | 10600 | Yes | 10.72 |

⁽¹⁾ other strokes under request

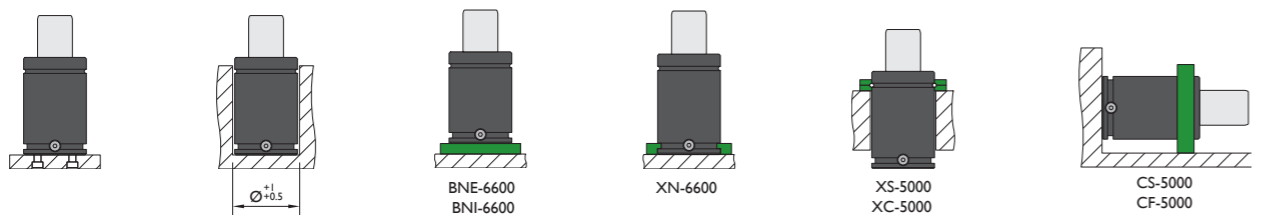
⁽²⁾ alternative forces upon request

⁽³⁾ ESK available for other strokes



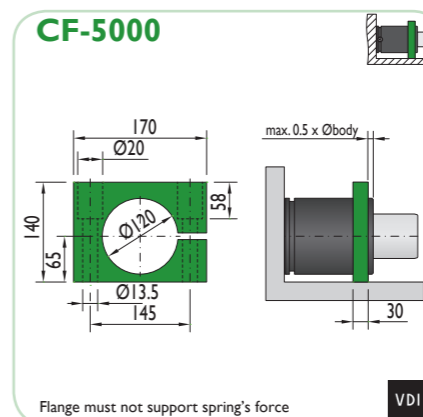
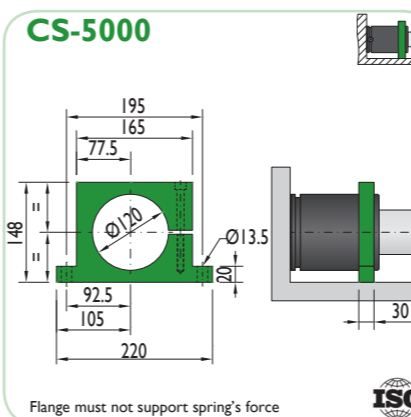
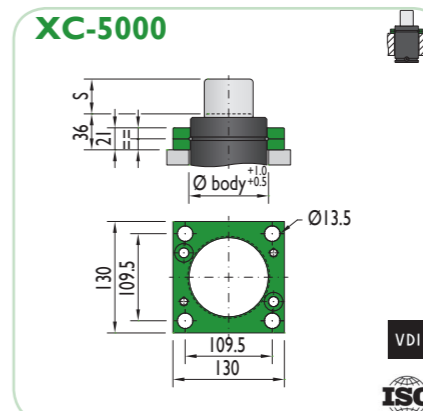
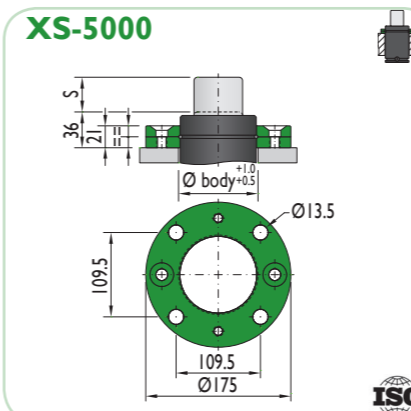
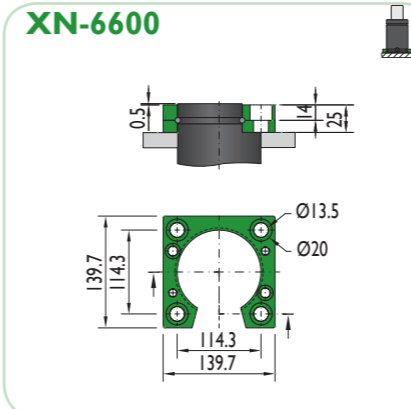
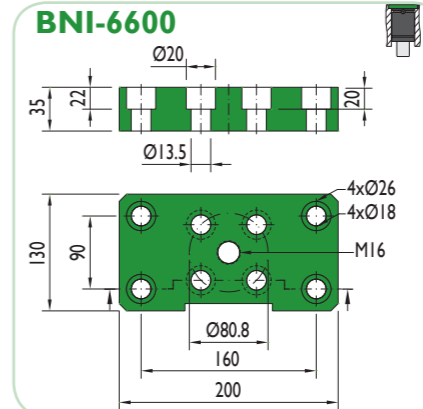
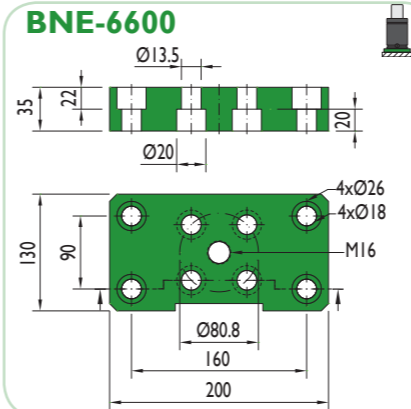
| | | | | | |
|------------------------|----------------|------------------------------------|-----------|----------------------|-------------|
| Pressure medium | N ₂ | Working temperature | 0-80°C | Min. security stroke | 10% |
| Max. Charging pressure | 150 bar | Temperature related force increase | +0.34%/°C | Repair Kit | KIT NT-6600 |
| Min. Charging pressure | 25 bar | Max. working speed | 1.6 m/s | Linkable | G1/8" |

Mounting possibilities



Flange must not support spring's force

Flanges



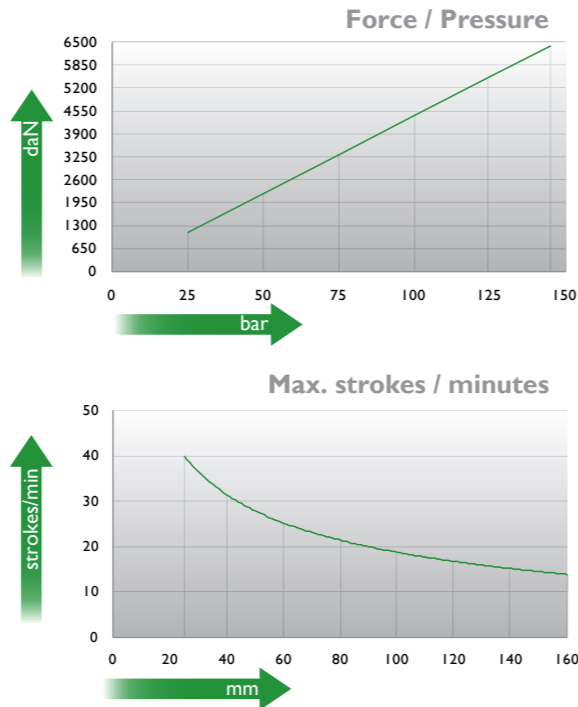
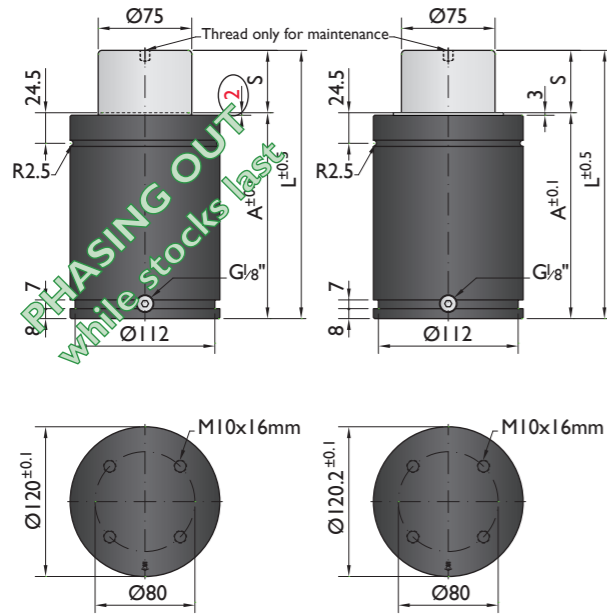
Flange must not support spring's force

Flange must not support spring's force



*The new cylinder will be supplied when the stock runs out.

NEW MODEL*



Ordering example: 4 x M-6500-125

| Order No. | S ⁽¹⁾ mm | L mm | A mm | F ₀ ⁽²⁾ daN (20°C, 145 bar) | F daN | (3) | kg |
|------------|------------------------|---------|---------|---|----------|-------|-------|
| M-6500-25 | 25 | 165 | 140 | 6400 | 8900 | No | 9.18 |
| M-6500-38 | 38 | 191 | 153 | | 9400 | No | 9.72 |
| M-6500-50 | 50 | 215 | 165 | | 9800 | No | 10.40 |
| M-6500-63 | 63 | 241 | 178 | | 10000 | No | 10.36 |
| M-6500-80 | 80 | 275 | 195 | | 10500 | No | 11.61 |
| M-6500-100 | 100 | 315 | 215 | | 10900 | Yes | 12.42 |
| M-6500-125 | 125 | 375 | 250 | 10600 | Yes | 13.43 | |
| M-6500-160 | 160 | 450 | 290 | 10700 | Yes | 14.84 | |

other strokes under request

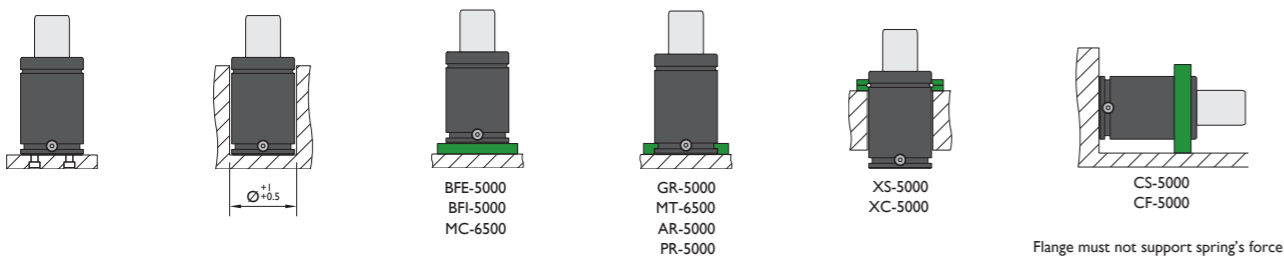
alternative forces upon request

ESK available for other strokes



| | | | | | |
|------------------------|----------------|------------------------------------|-----------|----------------------|------------|
| Pressure medium | N ₂ | Working temperature | 0-80°C | Min. security stroke | 10% |
| Max. Charging pressure | 145 bar | Temperature related force increase | +0.34%/°C | Repair Kit | KIT M-6500 |
| Min. Charging pressure | 25 bar | Max. working speed | 1.6 m/s | Linkable | G1/8" |

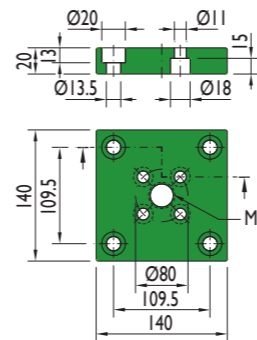
Mounting possibilities



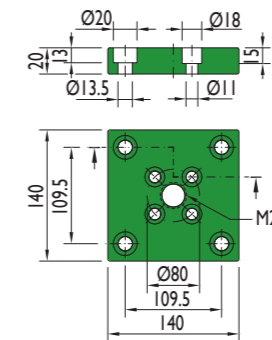
Flange must not support spring's force

Flanges

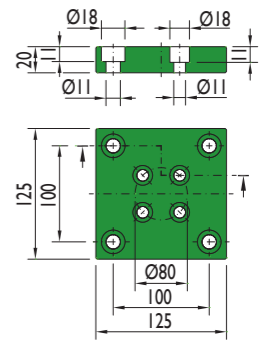
BFE-5000



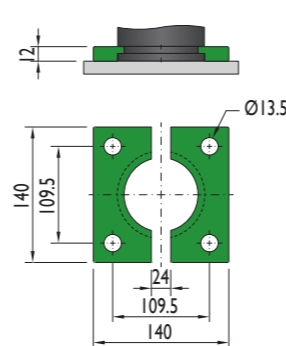
BFI-5000



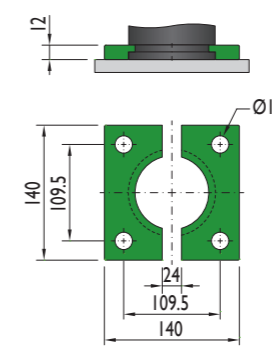
MC-6500



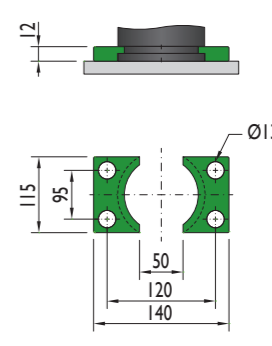
GR-5000



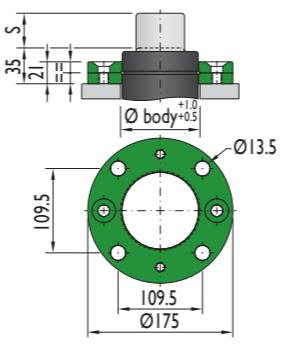
MT-6500



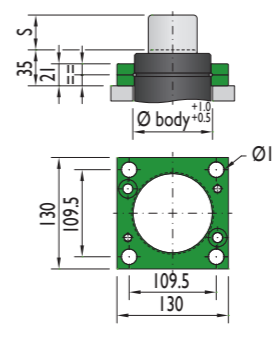
AR-5000



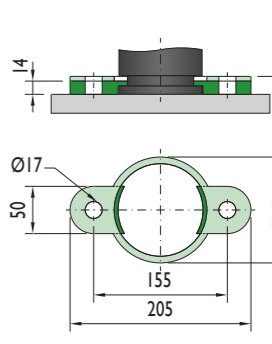
XS-5000



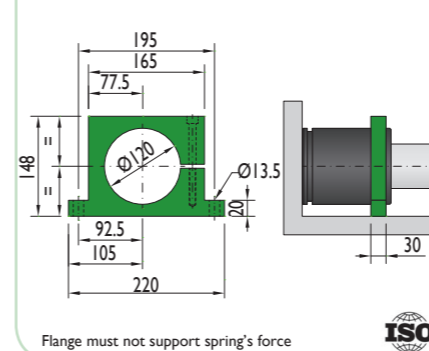
XC-5000



PR-5000

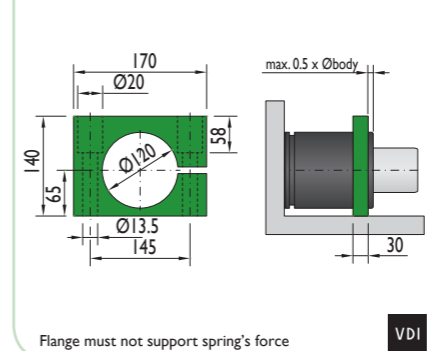


CS-5000



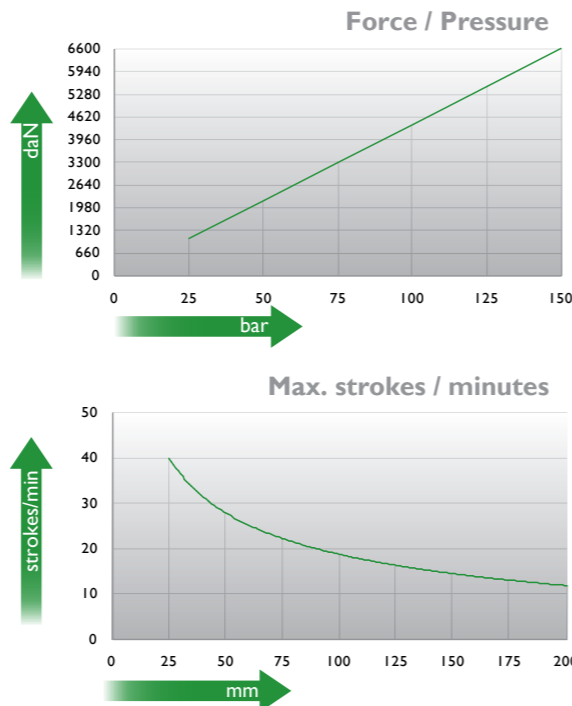
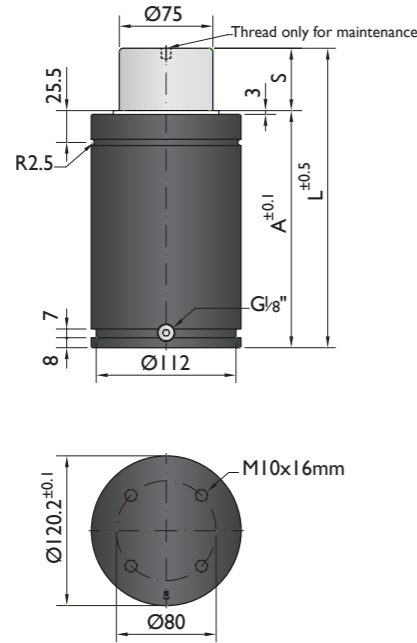
Flange must not support spring's force

CF-5000



Flange must not support spring's force

Special mounts available on
www.nitrogas.com



Ordering example: 4 x HD-6600-125

| Order No. | S ⁽¹⁾ mm | L mm | A mm | F ₀ ⁽²⁾ daN | F daN | (3) | kg |
|-------------|------------------------|---------|---------|--------------------------------------|----------|-----|-------|
| HD-6600-25 | 25 | 190 | 165 | | 8100 | No | 13.35 |
| HD-6600-38 | 38 | 216 | 178 | | 8600 | No | 14.62 |
| HD-6600-50 | 50 | 240 | 190 | | 9000 | No | 16.55 |
| HD-6600-63 | 63 | 266 | 203 | | 9300 | No | 17.85 |
| HD-6600-80 | 80 | 300 | 220 | | 10000 | No | 18.63 |
| HD-6600-100 | 100 | 340 | 240 | 6600 | 10300 | Yes | 19.32 |
| HD-6600-125 | 125 | 390 | 265 | | 10600 | Yes | 19.95 |
| HD-6600-160 | 160 | 460 | 300 | | 10900 | Yes | 20.81 |
| HD-6600-200 | 200 | 540 | 340 | | 11200 | Yes | 21.55 |
| HD-6600-250 | 250 | 640 | 390 | | 11500 | Yes | 23.58 |
| HD-6600-300 | 300 | 740 | 440 | | 11800 | Yes | 25.61 |

other strokes ⁽¹⁾ under request

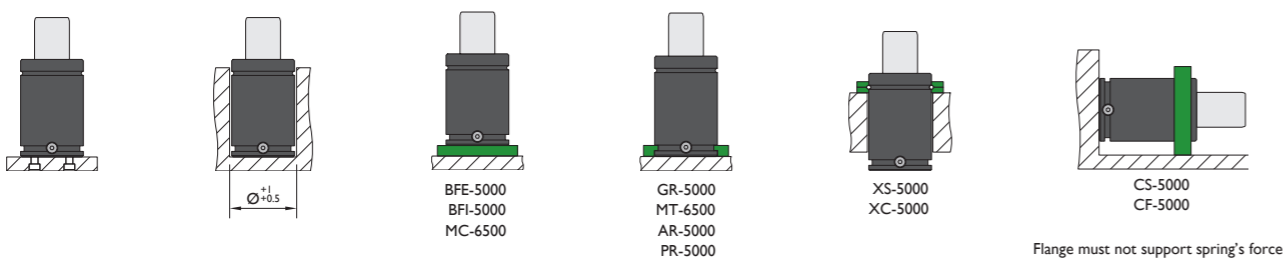
alternative forces ⁽²⁾ upon request

ESK available ⁽³⁾ for other strokes



| | | | | | |
|------------------------|----------------|------------------------------------|-----------|----------------------|-------------|
| Pressure medium | N ₂ | Working temperature | 0-80°C | Min. security stroke | 10% |
| Max. Charging pressure | 150 bar | Temperature related force increase | +0.34%/°C | Repair Kit | KIT HD-6600 |
| Min. Charging pressure | 25 bar | Max. working speed | 1.6 m/s | Linkable | G1/8" |

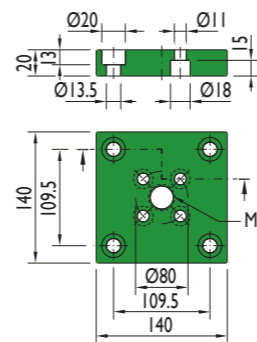
Mounting possibilities



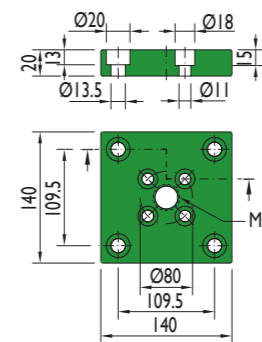
Flange must not support spring's force

Flanges

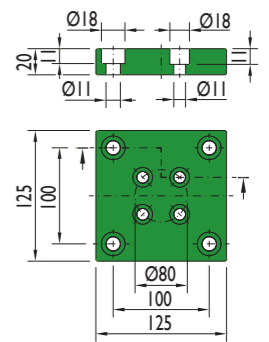
BFE-5000



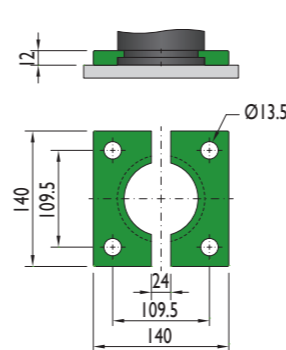
BFI-5000



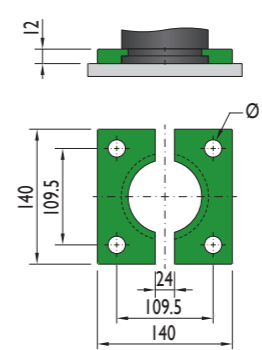
MC-6500



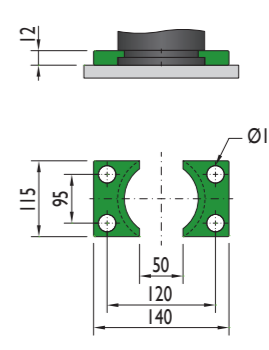
GR-5000



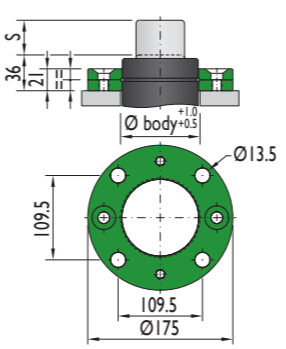
MT-6500



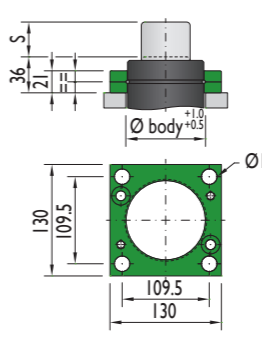
AR-5000



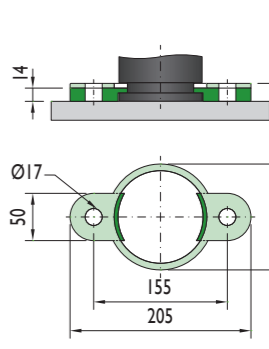
XS-5000



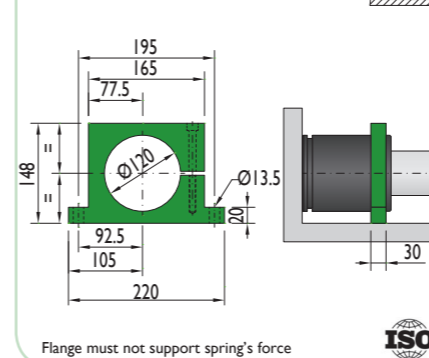
XC-5000



PR-5000

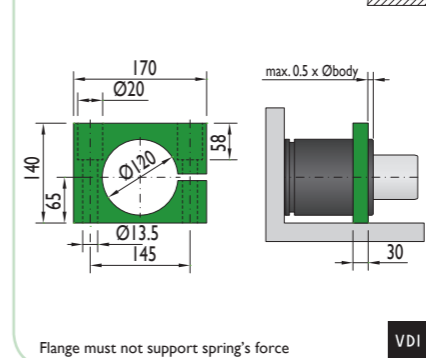


CS-5000



Flange must not support spring's force

CF-5000



Flange must not support spring's force