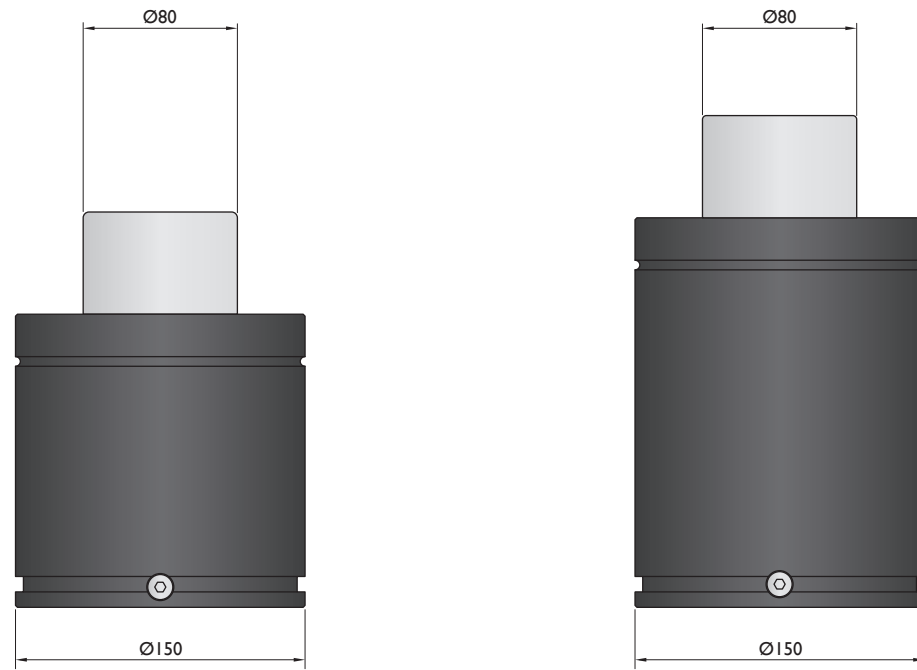
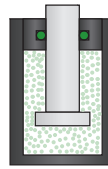


Force 7500 daN

Piston Rod Sealed
gas springs



Model	HG-7500	CN-7500
Initial F (daN)	7500	7500
L max (mm)	2xStroke+105	2xStroke+155
Stroke (mm)	25-200	25-300

* other strokes under request

Standards

PED
97/23/EC

ISO
11901

VDI
3003

CNOMO
EM24.54.700

PED
97/23/EC

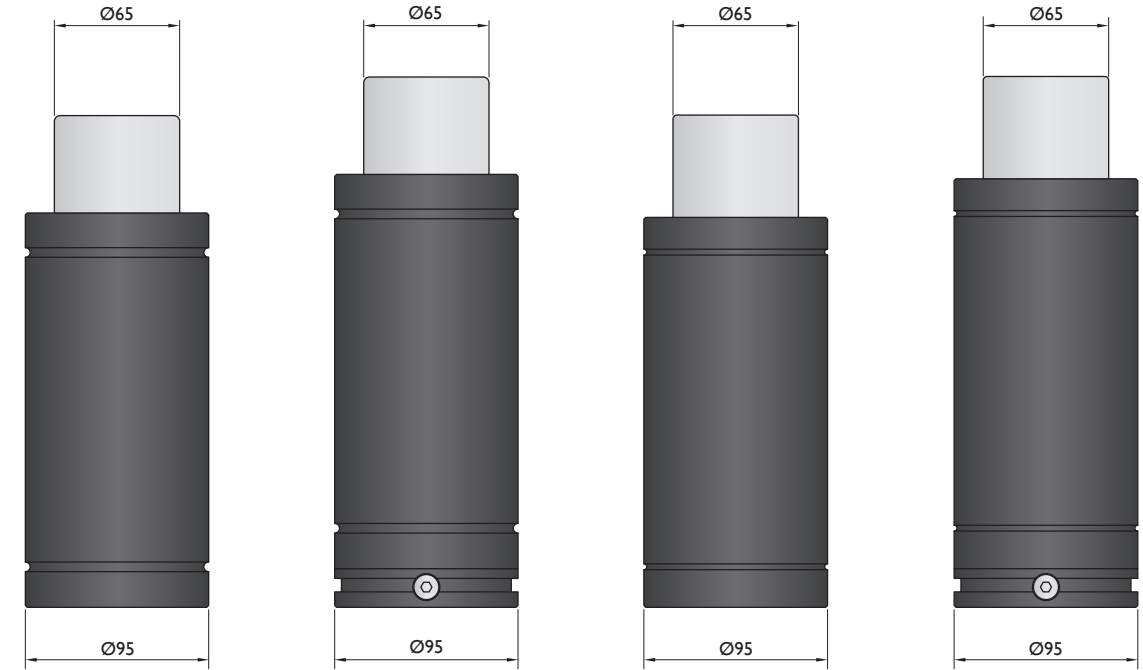
ISO
11901

VDI
3003

CNOMO
EM24.54.700

Force 7500 daN

Bore Sealed
gas springs



Model	T-7500	TC-7500	TS-7500	TSC-7500
Initial F (daN)	7500	7500	7500	7500
L max (mm)	90-255	110-275	90-279	110-299
Stroke (mm)	10-50	10-50	10-65	10-65

* other strokes under request

Standards

PED
97/23/EC

ISO
11901

VDI
3003

CNOMO
EM24.54.700

PED
97/23/EC

ISO
11901

VDI
3003

CNOMO
EM24.54.700

PED
97/23/EC

ISO
11901

VDI
3003

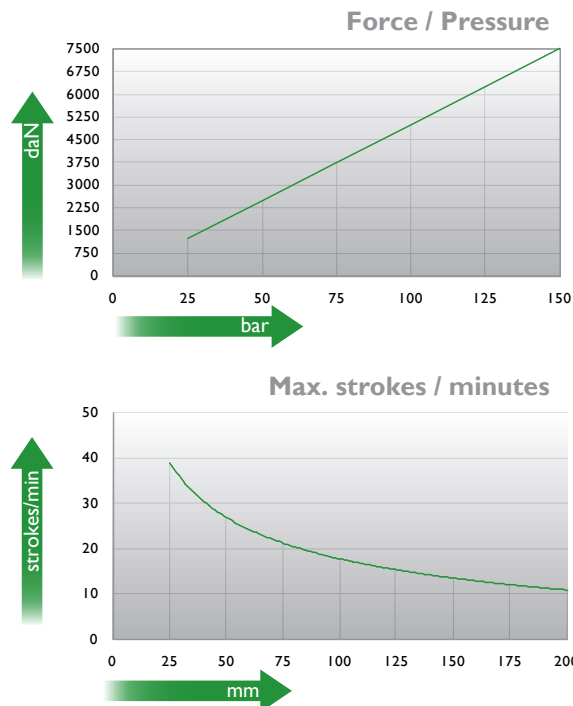
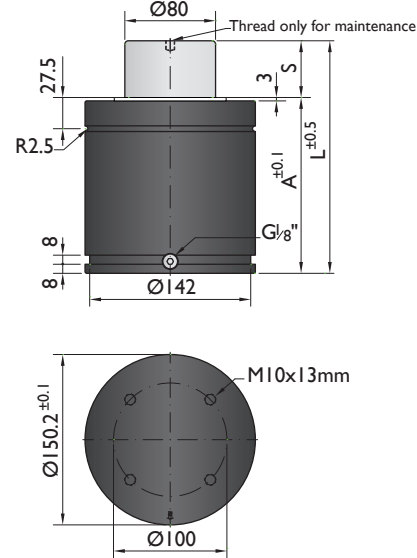
CNOMO
EM24.54.700

PED
97/23/EC

ISO
11901

VDI
3003

CNOMO
EM24.54.700



Ordering example: 4 x HG-7500-125

Order No.	S ⁽¹⁾ mm	L mm	A mm	F ₀ ⁽²⁾ daN	F daN	(3)	kg
HG-7500-25	25	155	130		9900	No	13.6
HG-7500-38	37.5	180	142.5		10400	No	14.5
HG-7500-50	50	205	155		10600	No	15.4
HG-7500-63	62.5	230	167.5		10800	No	16.3
HG-7500-80	80	265	185	7500	11500	No	17.5
HG-7500-100	100	305	205		11200	Yes	18.9
HG-7500-125	125	355	230		11300	Yes	20.7
HG-7500-160	160	425	265		11400	Yes	23.2
HG-7500-200	200	505	305		11500	Yes	26.1

(1) other strokes under request

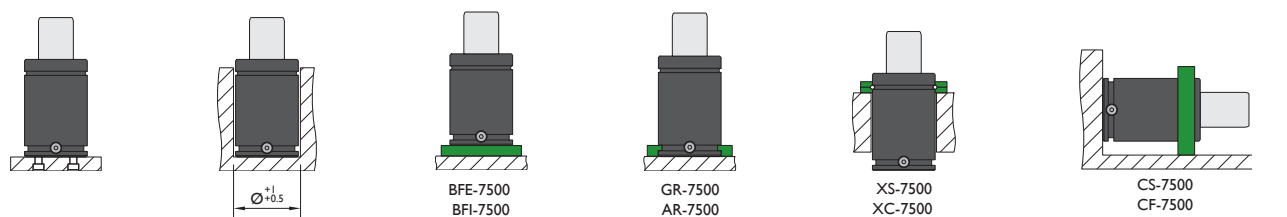
(2) alternative forces upon request

(3) ESK available for other strokes



Pressure medium	N ₂	Working temperature	0-80°C	Min. security stroke	10%
Max. Charging pressure	150 bar	Temperature related force increase	+0.34%/°C	Repair Kit	KIT HG-7500
Min. Charging pressure	25 bar	Max. working speed	1.6 m/s	Linkable	G1/8"

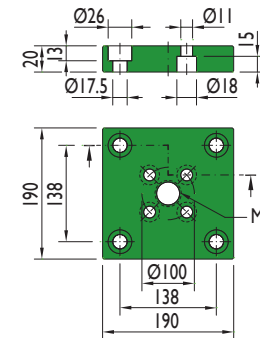
Mounting possibilities



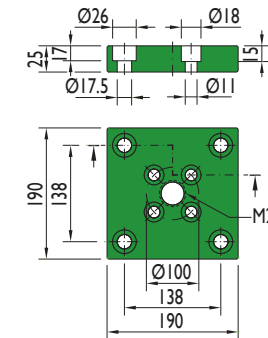
Flange must not support spring's force

Flanges

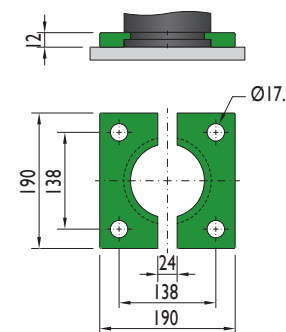
BFE-7500



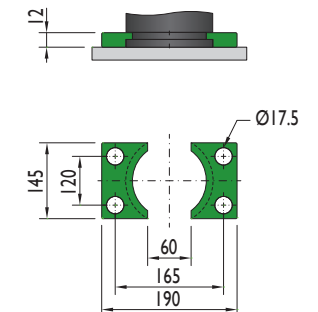
BFI-7500



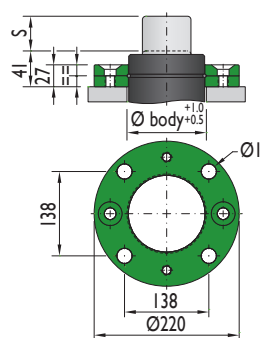
GR-7500



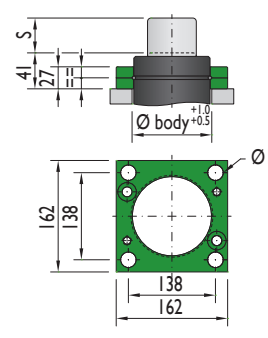
AR-7500



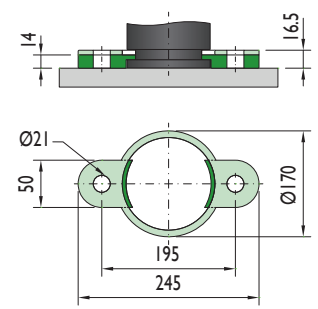
XS-7500



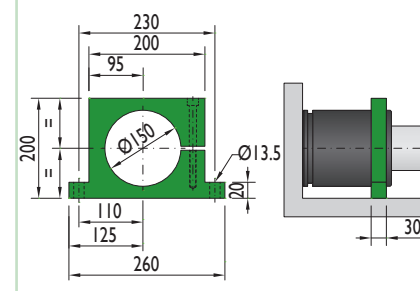
XC-7500



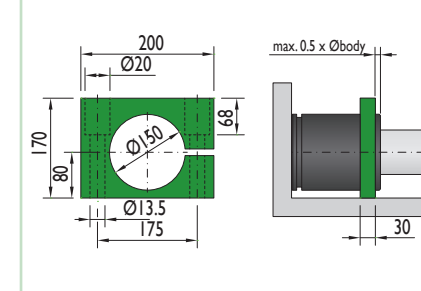
PR-7500



CS-7500



CF-7500



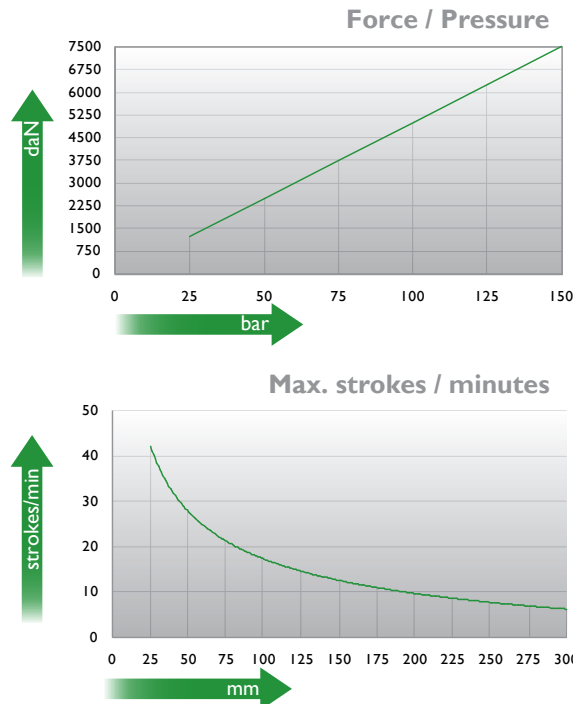
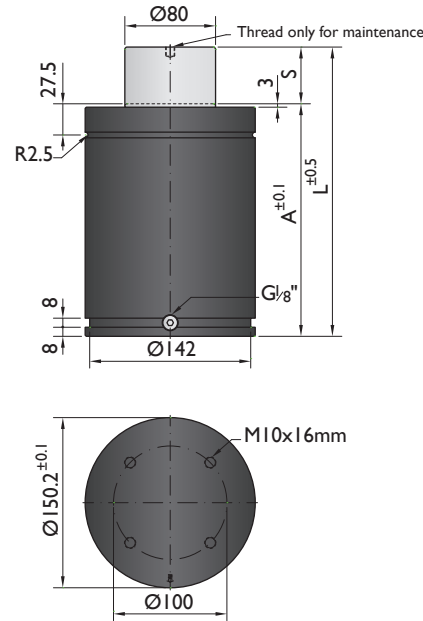
Flange must not support spring's force

Flange must not support spring's force



CNOMO
EM24.54.700

PSA
E24.54.815.G



Ordering example: 4 x CN-7500-125

Order No.	S ⁽¹⁾ mm	L mm	A mm	F ₀ ⁽²⁾ daN	F daN	(3)	kg
CN-7500-25	25	205	180		9000	No	18.06
CN-7500-38	38.1	231.2	193.1		9400	No	18.93
CN-7500-50	50	255	205		9700	No	20.30
CN-7500-63	63.5	282	218.5		9900	No	21.08
CN-7500-80	80	315	235		10100	No	22.21
CN-7500-100	100	355	255	7500	10500	Yes	23.47
CN-7500-125	125	405	280		10700	Yes	24.96
CN-7500-160	160	475	315		10900	Yes	27.01
CN-7500-200	200	555	355		11100	Yes	29.81
CN-7500-250	250	655	405		11200	Yes	33.01
CN-7500-300	300	755	455		11300	Yes	36.11

(1) other strokes under request

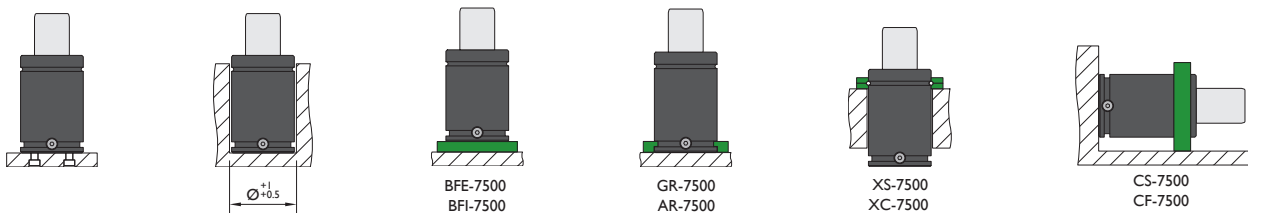
(2) alternative forces upon request

(3) ESK available for other strokes



Pressure medium	N ₂	Working temperature	0-80°C	Min. security stroke	10%
Max. Charging pressure	150 bar	Temperature related force increase	+0.34%/°C	Repair Kit	KIT CN-7500
Min. Charging pressure	25 bar	Max. working speed	1.6 m/s	Linkable	G1/8"

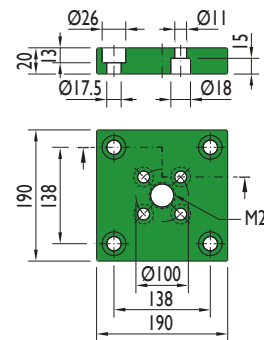
Mounting possibilities



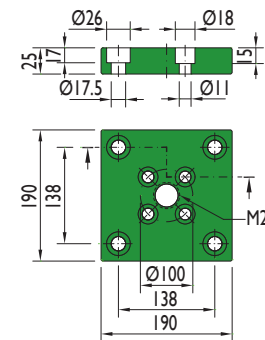
Flange must not support spring's force

Flanges

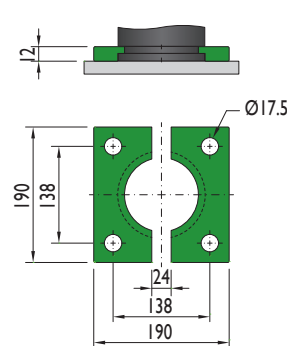
BFE-7500



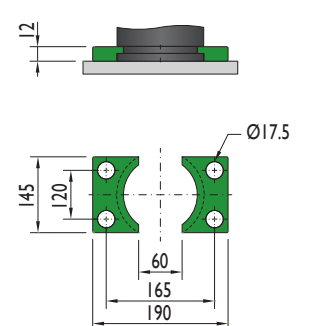
BFI-7500



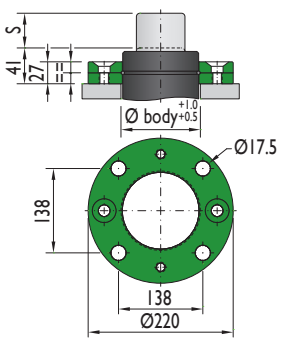
GR-7500



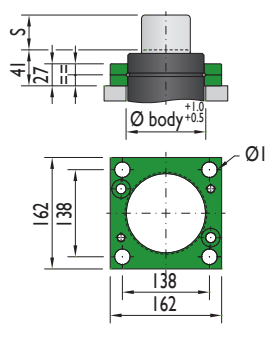
AR-7500



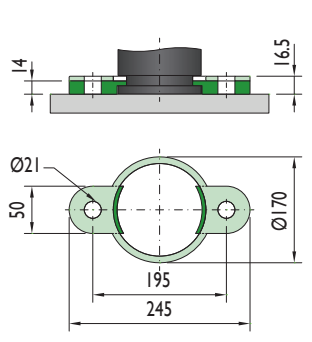
XS-7500



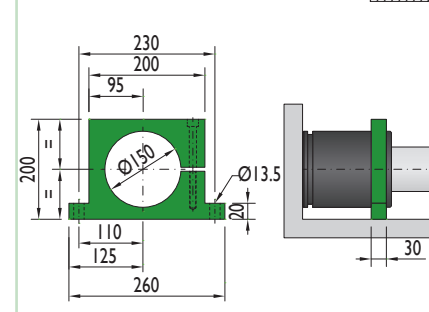
XC-7500



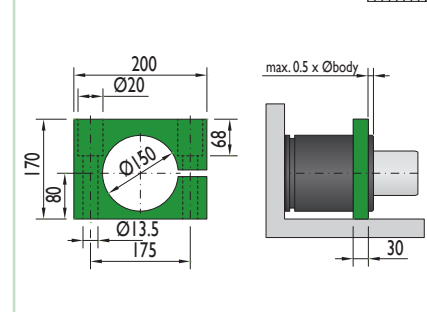
PR-7500



CS-7500

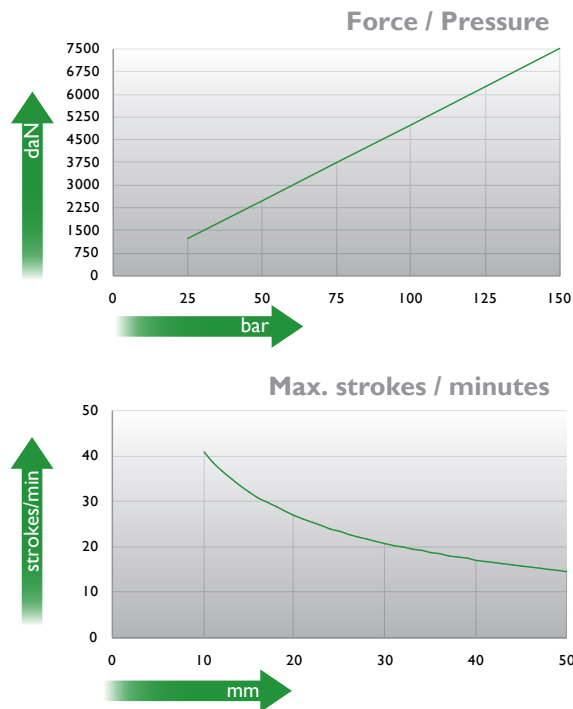
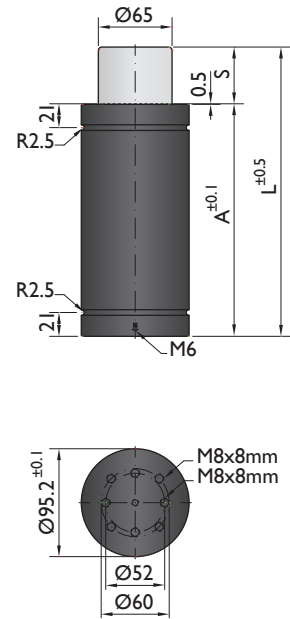


CF-7500



Flange must not support spring's force

Flange must not support spring's force



Ordering example: 4 x T-7500-50

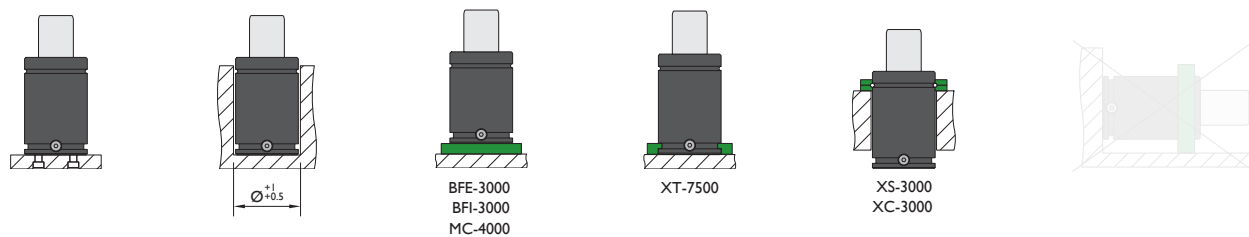
Order No.	S ⁽¹⁾ mm	L mm	A mm	F ₀ ⁽²⁾ daN (20°C, 150 bar)	F daN	⁽³⁾	kg
T-7500-10	10	90	80	7500	11100	No	2.52
T-7500-16	16	116	100		9900	No	3.03
T-7500-25	25	145	120		10400	No	3.83
T-7500-32	32	182	150		10400	No	3.90
T-7500-40	40	210	170		10400	No	4.03
T-7500-50	50	255	205		10400	No	4.14

(1) other strokes under request (2) alternative forces upon request (3) ESK under request



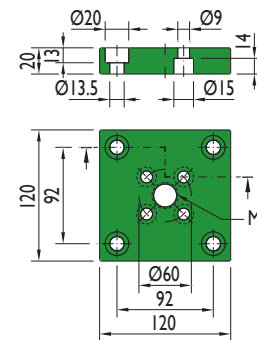
Pressure medium	N ₂	Working temperature	0-80°C	Min. security stroke	10%
Max. Charging pressure	150 bar	Temperature related force increase	+0.34%/°C	Repair Kit	KIT T-7500
Min. Charging pressure	25 bar	Max. working speed	0.5 m/s	Linkable	No

Mounting possibilities

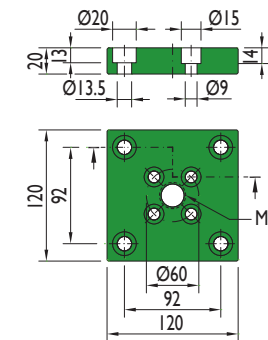


Flanges

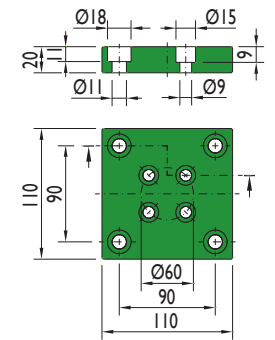
BFE-3000



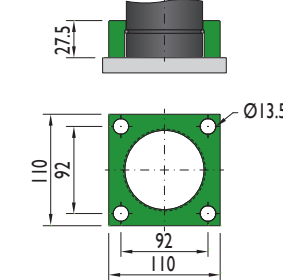
BFI-3000



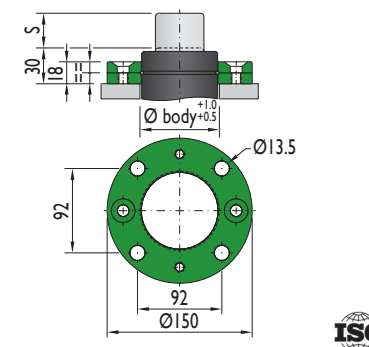
MC-4000



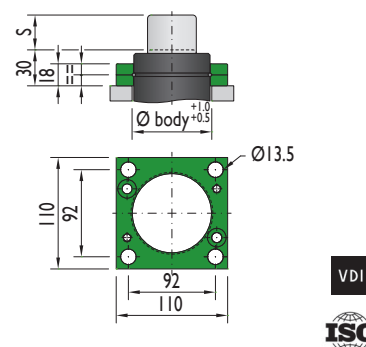
XT-7500

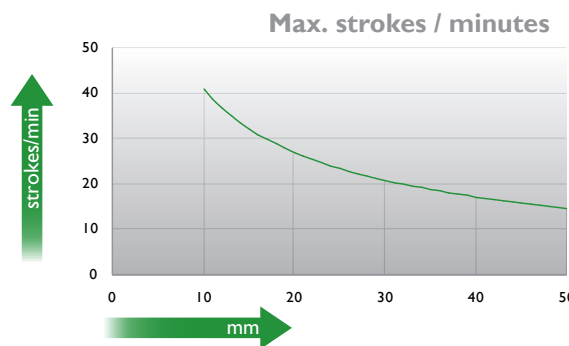
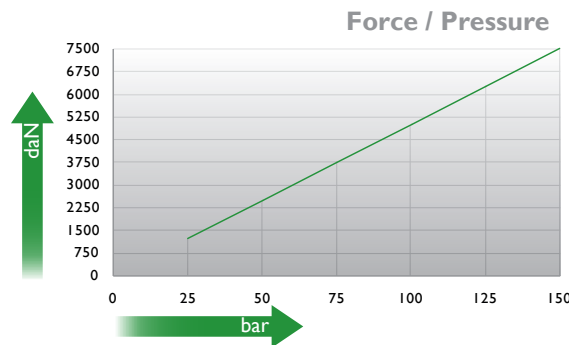
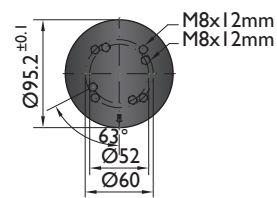
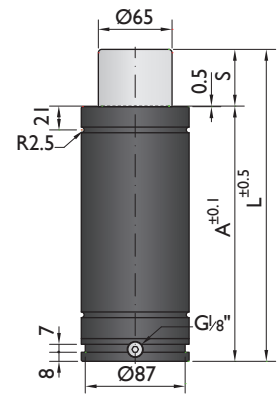


XS-3000

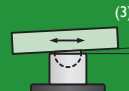


XC-3000





Ordering example: 4 x TC-7500-50

Order No.	S ⁽¹⁾ mm	L mm	A mm	F ₀ ⁽²⁾ daN (20°C, 150 bar)	F daN		kg
TC-7500-10	10	110	100	7500	11100	No	3.47
TC-7500-16	16	136	120		9900	No	3.98
TC-7500-25	25	165	140		10400	No	4.78
TC-7500-32	32	202	170		10400	No	4.85
TC-7500-40	40	230	190		10400	No	4.98
TC-7500-50	50	275	225		10400	No	5.09

other strokes⁽¹⁾ under request

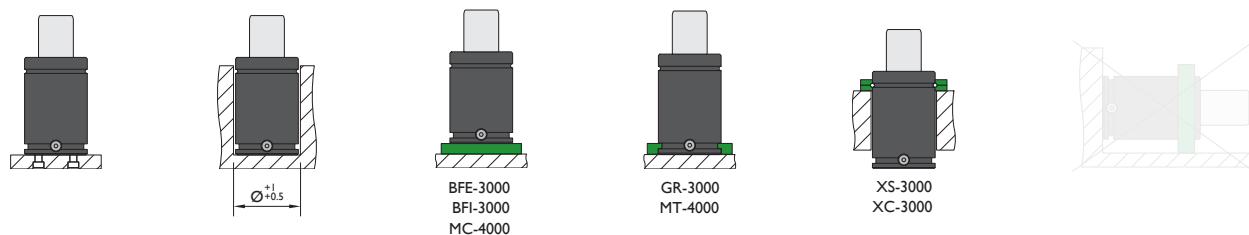
alternative forces⁽²⁾ upon request

ESK⁽³⁾ under request



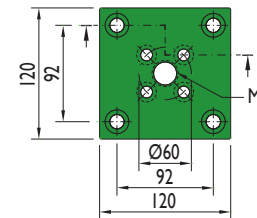
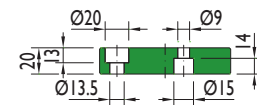
Pressure medium	N ₂	Working temperature	0-80°C	Min. security stroke	10%
Max. Charging pressure	150 bar	Temperature related force increase	+0.34%/°C	Repair Kit	KIT TC-7500
Min. Charging pressure	25 bar	Max. working speed	0.5 m/s	Linkable	G1/8"

Mounting possibilities

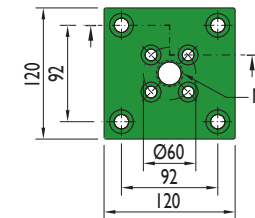
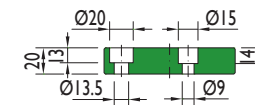


Flanges

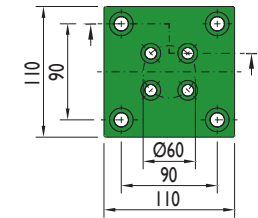
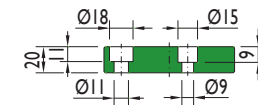
BFE-3000



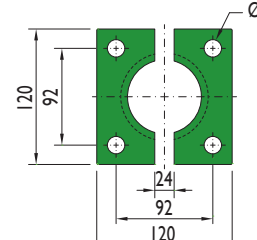
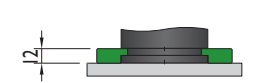
BFI-3000



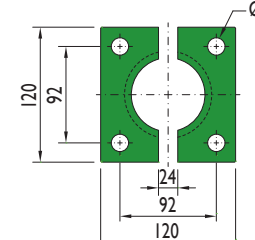
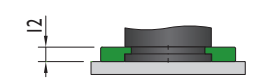
MC-4000



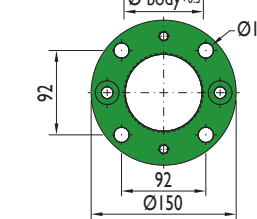
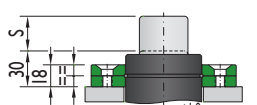
GR-3000



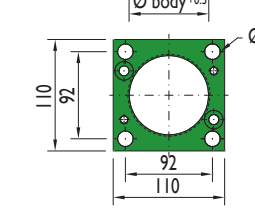
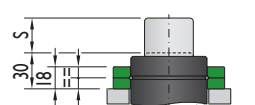
MT-4000



XS-3000

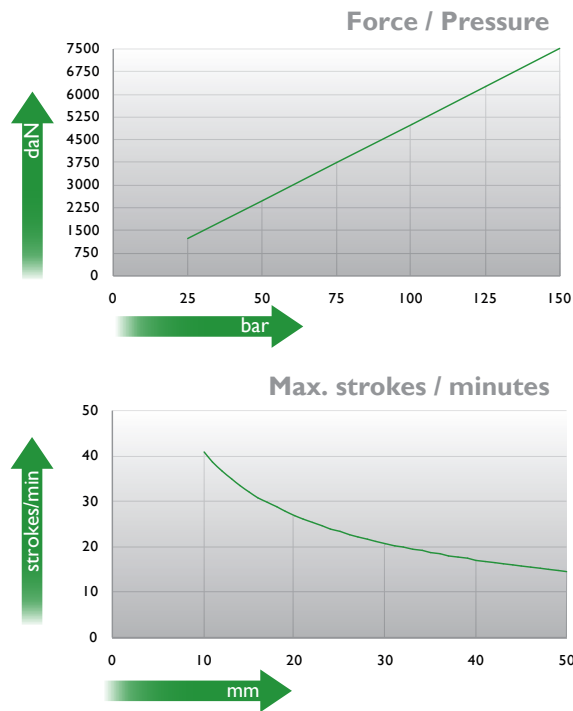
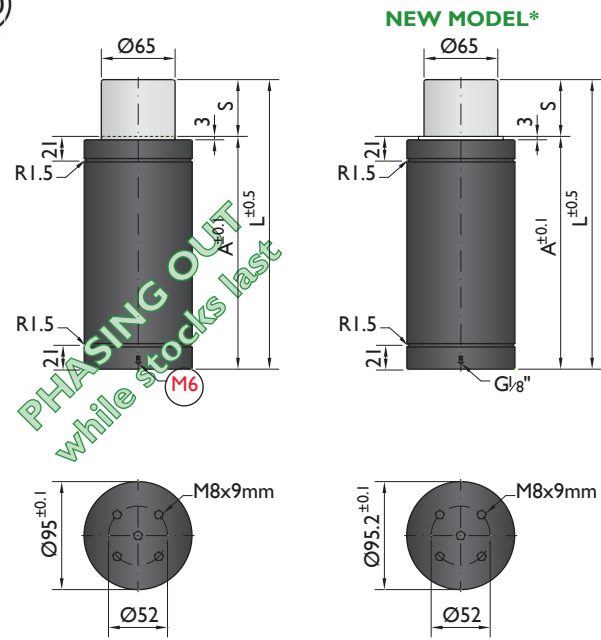


XC-3000





*The new cylinder will be supplied when the stock runs out.



Ordering example: 4 x TS-7500-50

Order No.	S ⁽¹⁾ mm	L mm	A mm	F ₀ ⁽²⁾ daN	F daN	(3)	kg
TS-7500-10	10	90	80	7500 (20°C, 150 bar)	11100	No	2.52
TS-7500-16	16	116	100		9900	No	3.03
TS-7500-25	25	145	120		10400	No	3.83
TS-7500-32	32	182	150		10400	No	3.90
TS-7500-40	40	210	170		10400	No	4.03
TS-7500-50	50	255	205		10400	No	4.14
TS-7500-65	65	279	214	11000	No	4.33	

⁽¹⁾ other strokes under request

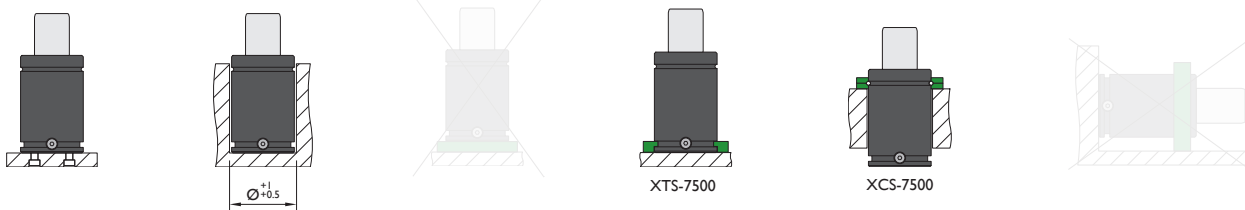
⁽²⁾ alternative forces upon request

⁽³⁾ ESK under request

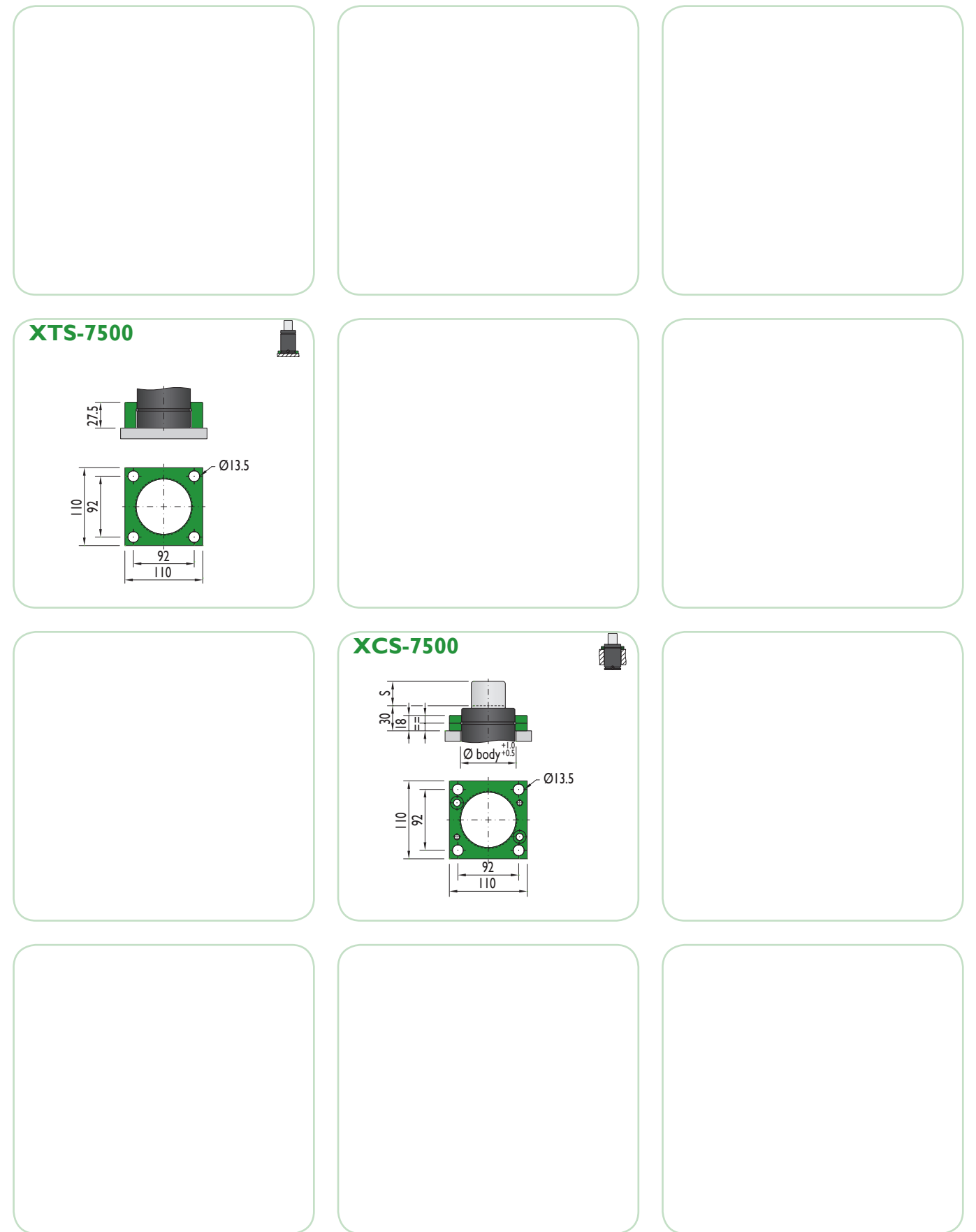


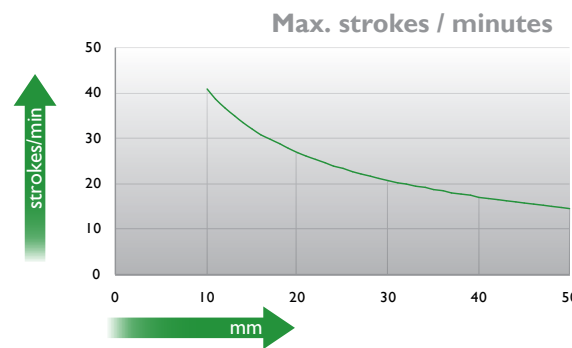
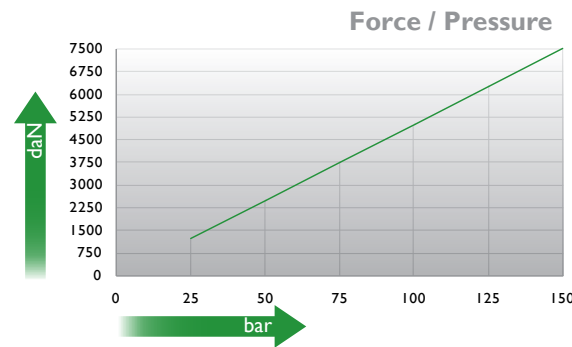
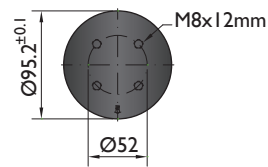
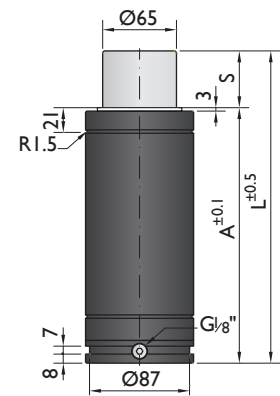
Pressure medium	N ₂	Working temperature	0-80°C	Min. security stroke	10%
Max. Charging pressure	150 bar	Temperature related force increase	+0.34%/°C	Repair Kit	KIT TS-7500
Min. Charging pressure	25 bar	Max. working speed	0.5 m/s	Linkable	No

Mounting possibilities



Flanges





Ordering example: 4 x TSC-7500-50

Order No.	S ⁽¹⁾ mm	L mm	A mm	F ₀ ⁽²⁾ daN	F daN	(3)	kg
TSC-7500-10	10	110	100		11100	No	3.47
TSC-7500-16	16	136	120		9900	No	3.98
TSC-7500-25	25	165	140		10400	No	4.78
TSC-7500-32	32	202	170	7500	10400	No	4.85
TSC-7500-40	40	230	190		10400	No	4.98
TSC-7500-50	50	275	225		10400	No	5.09
TSC-7500-65	65	299	234		11000	No	5.28

⁽¹⁾ other strokes under request

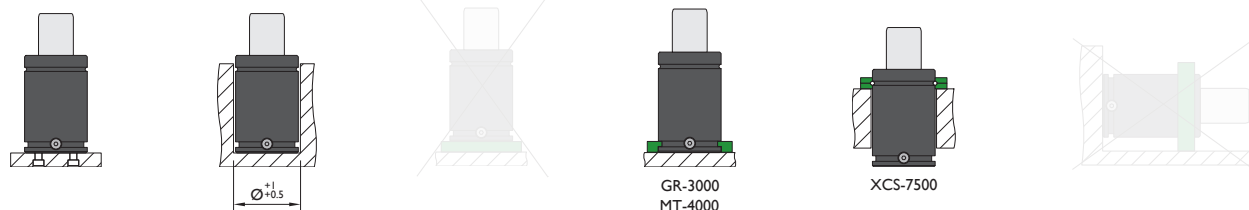
⁽²⁾ alternative forces upon request

⁽³⁾ ESK under request



Pressure medium	N ₂	Working temperature	0-80°C	Min. security stroke	10%
Max. Charging pressure	150 bar	Temperature related force increase	+0.34%/°C	Repair Kit	KIT TSC-7500
Min. Charging pressure	25 bar	Max. working speed	0.5 m/s	Linkable	G1/8"

Mounting possibilities



Flanges

GR-3000 	MT-4000 	
	XCS-7500 	