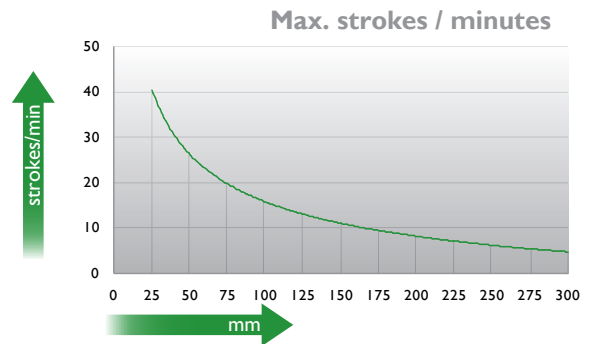
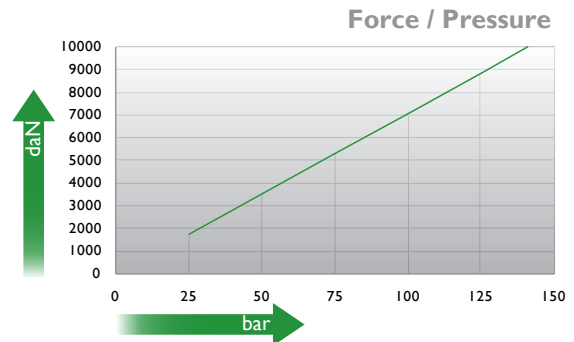
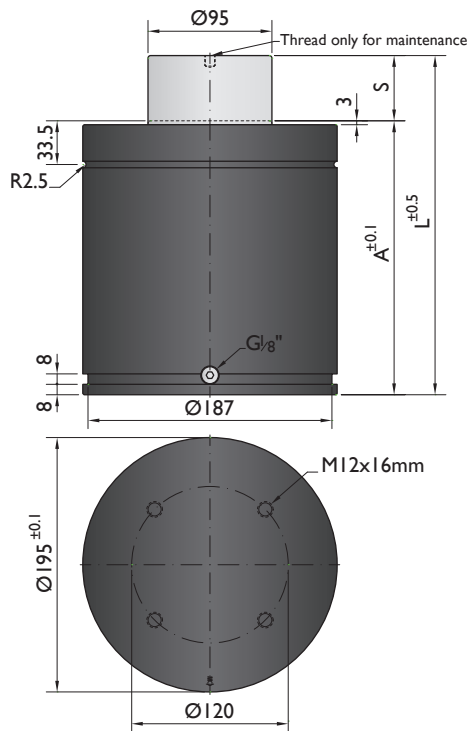





CNOMO
EM24.54.700



Ordering example: 4 x CN-10000-200

Order No.	S ⁽¹⁾ mm	L mm	A mm	F ₀ ⁽²⁾ daN (20°C, 150 bar)	F daN		kg
CN-10000-25	25	210	185		13000	No	32.40
CN-10000-38	38.1	236.2	198.1		13500	No	34.30
CN-10000-50	50	260	210		13800	No	36.20
CN-10000-63	63.5	287	223.5		14000	No	38.10
CN-10000-80	80	320	240		14200	No	40.70
CN-10000-100	100	360	260	10600	14400	No	43.80
CN-10000-125	125	410	285		14800	Yes	47.60
CN-10000-160	160	480	320		14900	Yes	52.90
CN-10000-200	200	560	360		15200	Yes	59.10
CN-10000-250	250	660	410		15200	Yes	66.60
CN-10000-300	300	760	460		15200	Yes	74.20

⁽¹⁾ other strokes under request

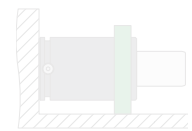
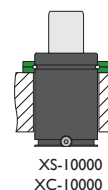
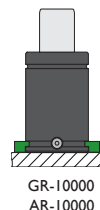
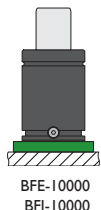
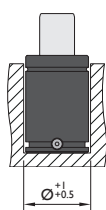
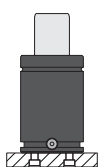
⁽²⁾ alternative forces upon request

⁽³⁾ ESK available for other strokes



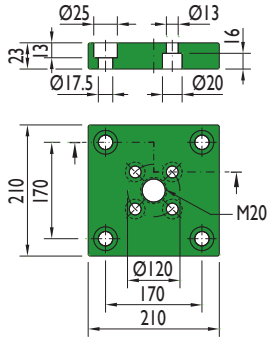
Pressure medium	N ₂	Working temperature	0-80°C	Min. security stroke	10%
Max. Charging pressure	150 bar	Temperature related force increase	+0.34%/°C	Repair Kit	KIT CN-10000
Min. Charging pressure	25 bar	Max. working speed	1.6 m/s	Linkable	G1/8"

Mounting possibilities

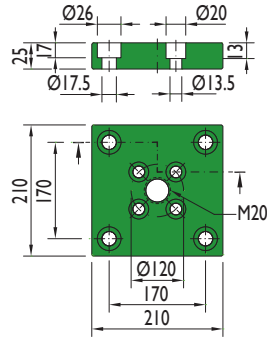


Flanges

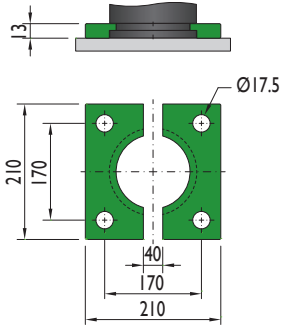
BFE-10000



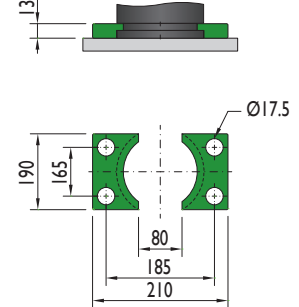
BFI-10000



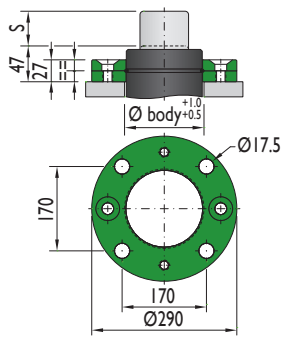
GR-10000



AR-10000



XS-10000



XC-10000

