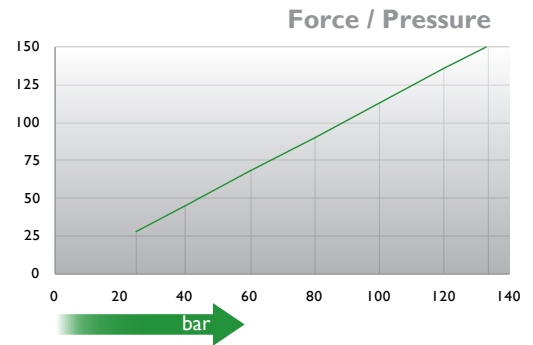
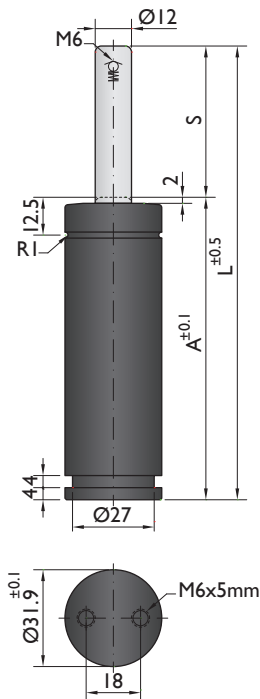




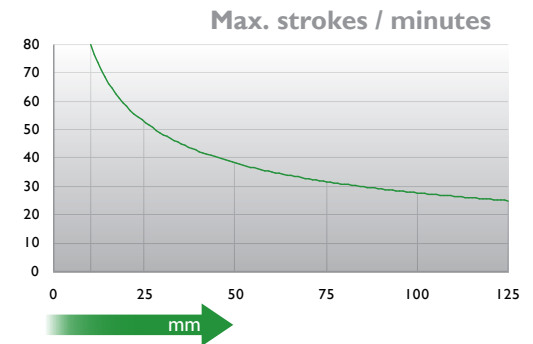
CNOMO
EM24.54.700

PSA
E24.54.815.G



↑ daN

→ bar



↑ strokes/min

→ mm

Ordering example: 4 x CN-150-125

| Order No. | S ⁽¹⁾ mm | L mm | A mm | F ₀ ⁽²⁾ daN | F daN | kg |
|------------|------------------------|---------|---------|--------------------------------------|----------|------|
| CN-150-10 | 10 | 70 | 60 | 150 | 170 | 0.27 |
| CN-150-13 | 12.7 | 75.4 | 62.7 | | 180 | 0.28 |
| CN-150-16 | 16 | 82 | 66 | | 180 | 0.29 |
| CN-150-25 | 25 | 100 | 75 | | 180 | 0.33 |
| CN-150-38 | 38.1 | 126.2 | 88.1 | | 180 | 0.38 |
| CN-150-50 | 50 | 150 | 100 | | 190 | 0.43 |
| CN-150-63 | 63.5 | 177 | 113.5 | | 200 | 0.48 |
| CN-150-80 | 80 | 210 | 130 | | 200 | 0.56 |
| CN-150-100 | 100 | 250 | 150 | | 200 | 0.64 |
| CN-150-125 | 125 | 300 | 175 | | 200 | 0.73 |

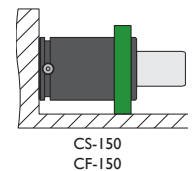
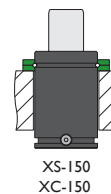
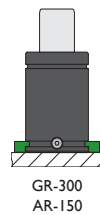
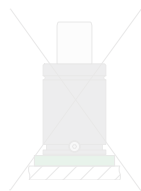
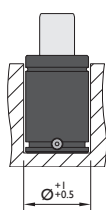
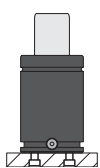
⁽¹⁾ other strokes under request

⁽²⁾ alternative forces upon request



| | | | | | |
|------------------------|----------------|------------------------------------|-----------|----------------------|------------|
| Pressure medium | N ₂ | Working temperature | 0-80°C | Min. security stroke | 10% |
| Max. Charging pressure | 135 bar | Temperature related force increase | +0.34%/°C | Repair Kit | KIT CN-150 |
| Min. Charging pressure | 25 bar | Max. working speed | 1.6 m/s | Linkable | No |

Mounting possibilities

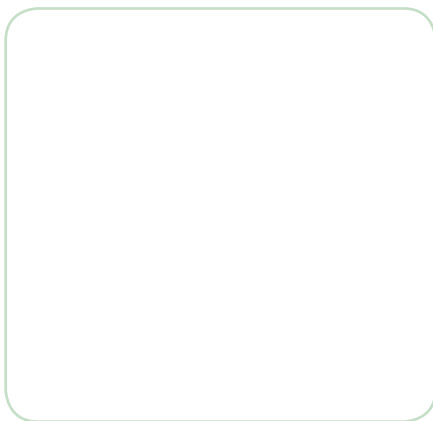


Flange must not support spring's force

Flanges



GR-300



AR-150

XS-150

XC-150



CS-150

CF-150

