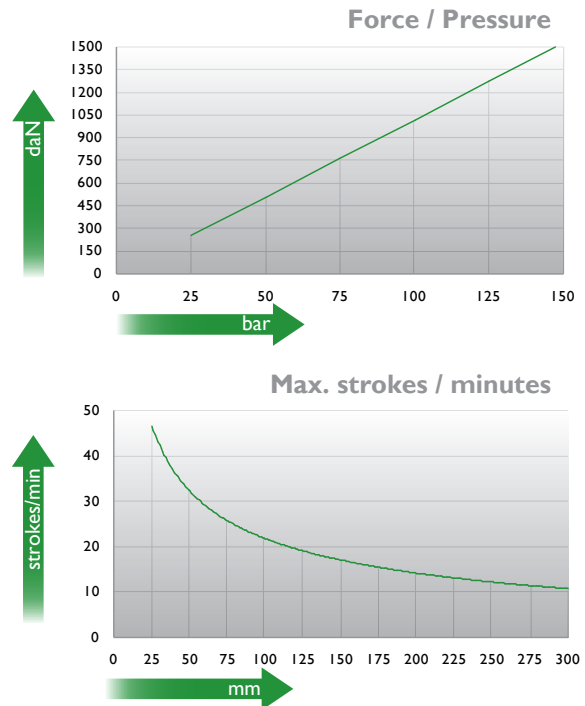
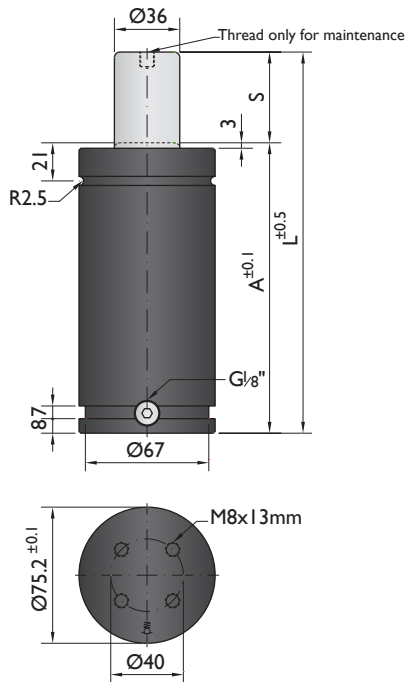


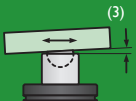


CNOMO  
EM24.54.700

PSA  
E24.54.815.G



Ordering example: 4 x G-1500-125

Order No.	S <sup>(1)</sup> mm	L mm	A mm	F <sub>0</sub> <sup>(2)</sup> daN (20°C, 150 bar)	F daN	 <sup>(3)</sup>	kg
G-1500-25	25	160	135	1500	1800	No	3.48
G-1500-38	38.1	186.2	148.1		1900	No	3.71
G-1500-50	50	210	160		2000	No	4.05
G-1500-63	63.5	237	173.5		2000	No	4.28
G-1500-80	80	270	190		2000	No	4.37
G-1500-100	100	310	210		2000	Yes	4.44
G-1500-125	125	360	235		2100	Yes	4.87
G-1500-160	160	430	270		2100	Yes	5.29
G-1500-200	200	510	310		2100	Yes	6.75
G-1500-250	250	610	360		2100	Yes	7.62
G-1500-300	300	710	410	2100	Yes	8.48	

<sup>(1)</sup> other strokes under request

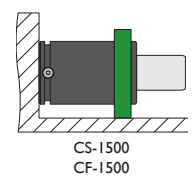
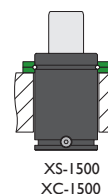
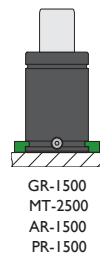
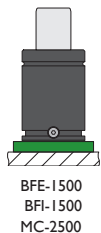
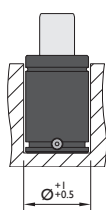
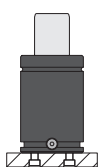
<sup>(2)</sup> alternative forces upon request

<sup>(3)</sup> ESK available for other strokes



Pressure medium	N <sub>2</sub>	Working temperature	0-80°C	Min. security stroke	10%
Max. Charging pressure	150 bar	Temperature related force increase	+0.34%/°C	Repair Kit	KIT G-1500
Min. Charging pressure	25 bar	Max. working speed	1.6 m/s	Linkable	G1/8"

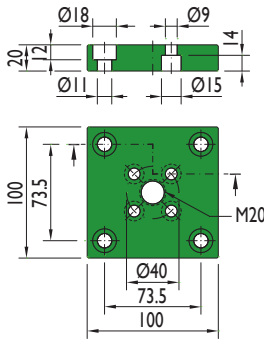
## Mounting possibilities



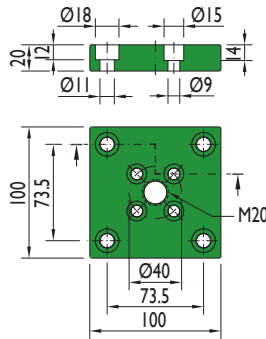
Flange must not support spring's force

## Flanges

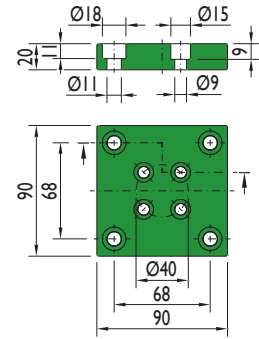
**BFE-1500**



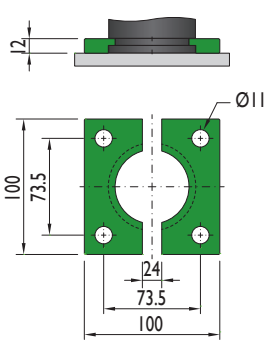
**BFI-1500**



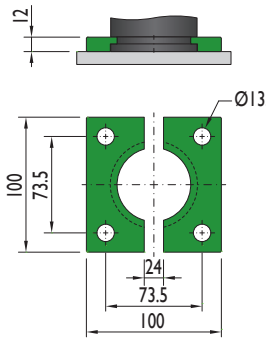
**MC-2500**



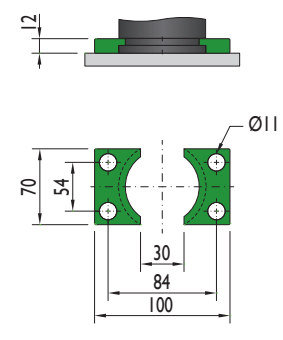
**GR-1500**



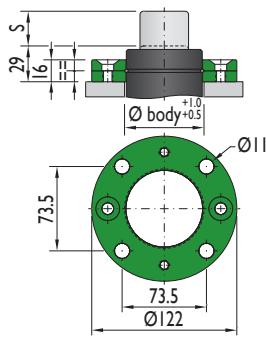
**MT-2500**



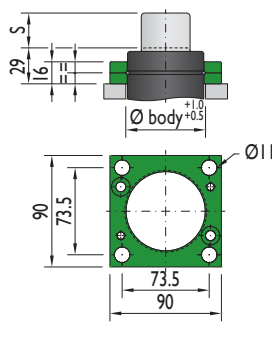
**AR-1500**



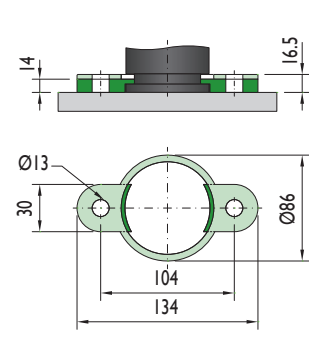
**XS-1500**



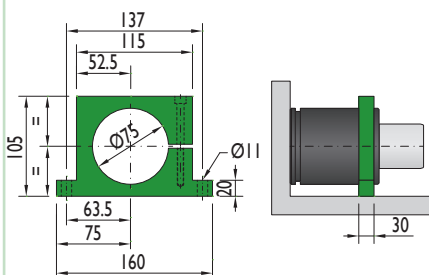
**XC-1500**



**PR-1500**

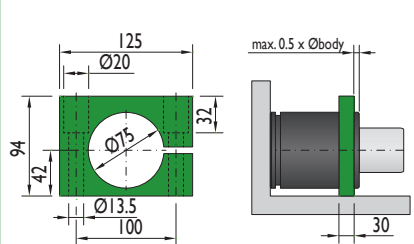


**CS-1500**



Flange must not support spring's force

**CF-1500**



Flange must not support spring's force

Special mounts available on  
[www.nitrogas.com](http://www.nitrogas.com)