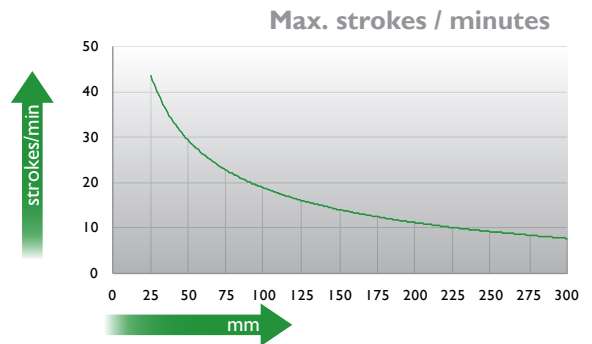
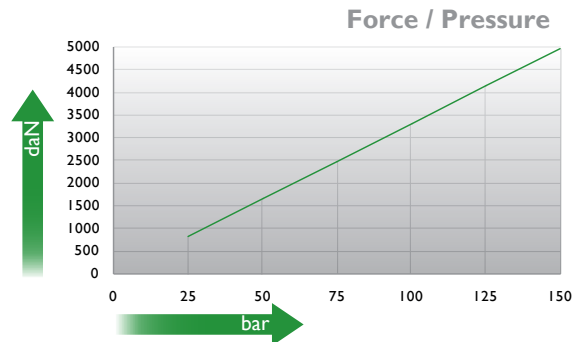
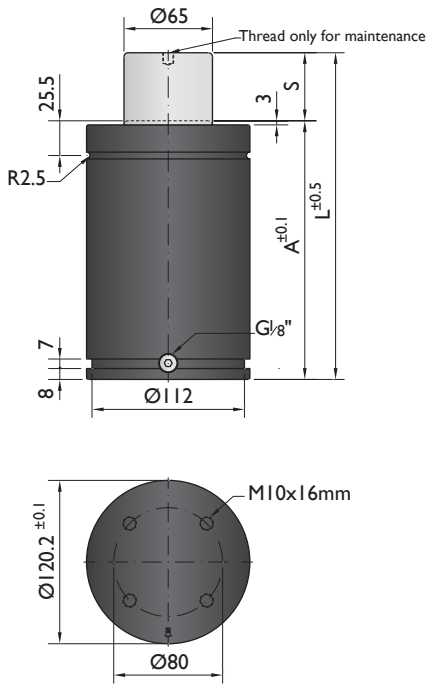




CNOMO  
EM24.54.700

PSA  
E24.54.815.G



Ordering example: 4 x G-5000-125

Order No.	S <sup>(1)</sup> mm	L mm	A mm	F <sub>0</sub> <sup>(2)</sup> daN	F daN	kg
				(20°C, 150 bar)		
G-5000-25	25	190	165		5900	10.76
G-5000-38	38.1	216.2	178.1		6200	11.33
G-5000-50	50	240	190		6400	11.80
G-5000-63	63.5	267	203.5		6600	12.26
G-5000-80	80	300	220		6700	13.21
G-5000-100	100	340	240	5000	7200	14.86
G-5000-125	125	390	265		7300	16.25
G-5000-160	160	460	300		7400	17.54
G-5000-200	200	540	340		7500	21.16
G-5000-250	250	640	390		7500	22.61
G-5000-300	300	740	440		7600	26.51

<sup>(1)</sup> other strokes under request

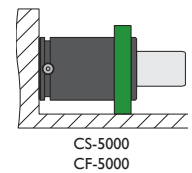
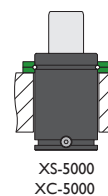
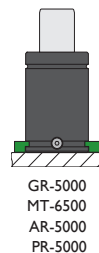
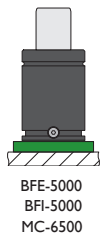
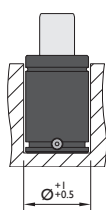
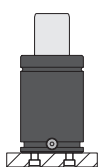
<sup>(2)</sup> alternative forces upon request

<sup>(3)</sup> ESK available for other strokes



Pressure medium	N <sub>2</sub>	Working temperature	0-80°C	Min. security stroke	10%
Max. Charging pressure	150 bar	Temperature related force increase	+0.34%/°C	Repair Kit	KIT G-5000
Min. Charging pressure	25 bar	Max. working speed	1.6 m/s	Linkable	G1/8"

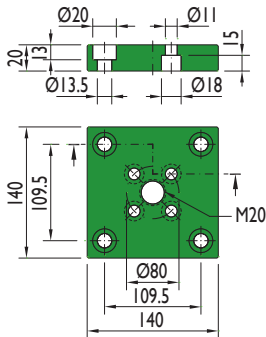
## Mounting possibilities



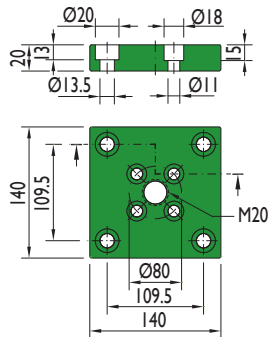
Flange must not support spring's force

## Flanges

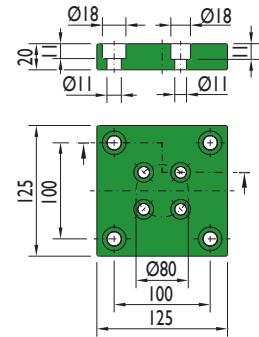
**BFE-5000**



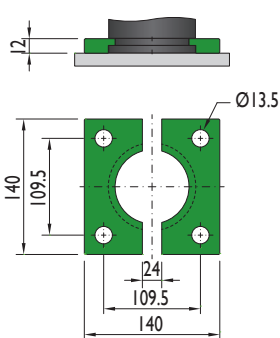
**BFI-5000**



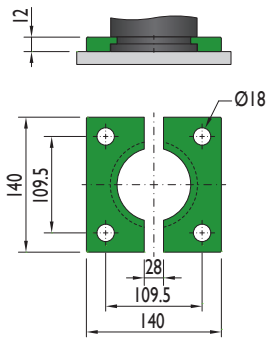
**MC-6500**



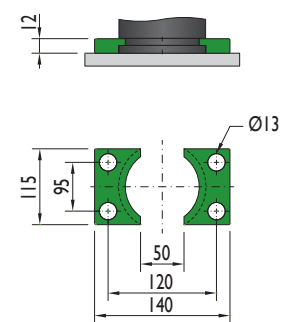
**GR-5000**



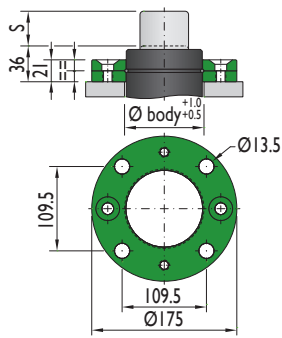
**MT-6500**



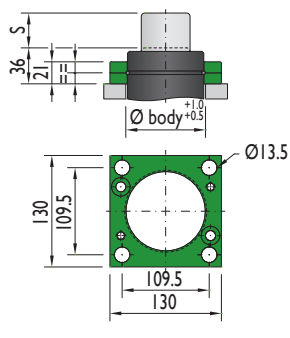
**AR-5000**



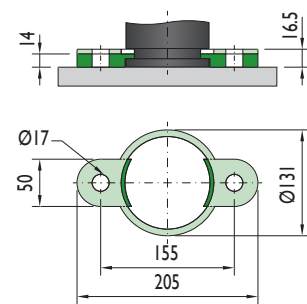
**XS-5000**



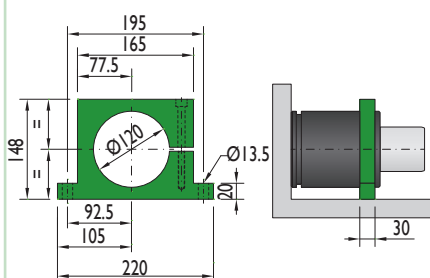
**XC-5000**



**PR-5000**

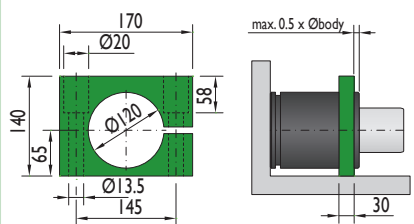


**CS-5000**



Flange must not support spring's force

**CF-5000**



Flange must not support spring's force

Special mounts available on  
[www.nitrogas.com](http://www.nitrogas.com)