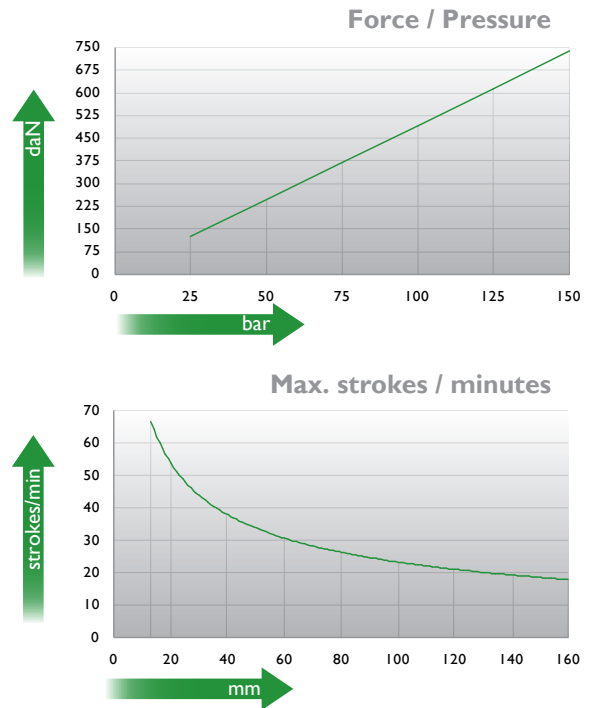
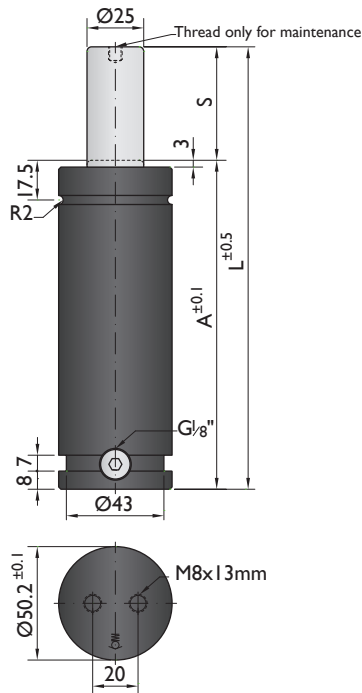




CNOMO
EM24.54.700

PSA
E24.54.815.G



Ordering example: 4 x G-750-125

Order No.	S ⁽¹⁾ mm	L mm	A mm	F ₀ daN (20°C, 150 bar)	F daN		kg
G-750-13	12.7	120.4	107.7	740	800	No	1.20
G-750-25	25	145	120		900	No	1.21
G-750-38	38.1	171.2	133.1		900	No	1.38
G-750-50	50	195	145		900	No	1.50
G-750-63	63.5	222	158.5		900	No	1.57
G-750-80	80	255	175		1000	No	1.63
G-750-100	100	295	195		1000	Yes	1.85
G-750-125	125	345	220		1000	Yes	2.01
G-750-160	160	415	255		1100	Yes	3.80
G-750-200	200	495	295		1100	Yes	3.90
G-750-250	250	595	345	1200	Yes	4.00	
G-750-300	300	695	395	1200	Yes	4.20	

⁽¹⁾ other strokes under request

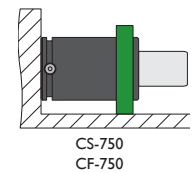
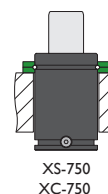
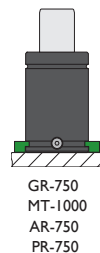
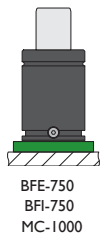
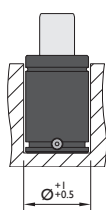
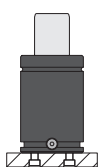
⁽²⁾ alternative forces upon request

⁽³⁾ ESK available for other strokes



Pressure medium	N ₂	Working temperature	0-80°C	Min. security stroke	10%
Max. Charging pressure	150 bar	Temperature related force increase	+0.34%/°C	Repair Kit	KIT G-750
Min. Charging pressure	25 bar	Max. working speed	1.6 m/s	Linkable	G1/8"

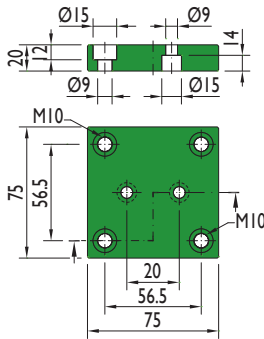
Mounting possibilities



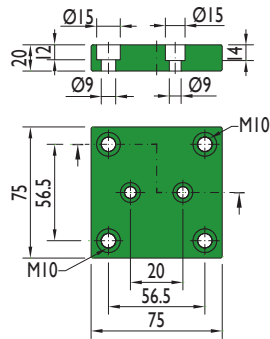
Flange must not support spring's force

Flanges

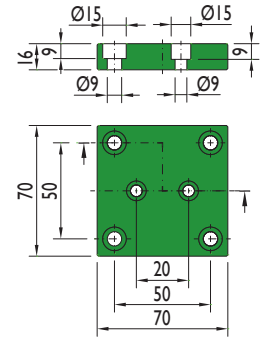
BFE-750



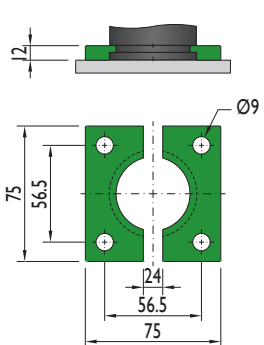
BFI-750



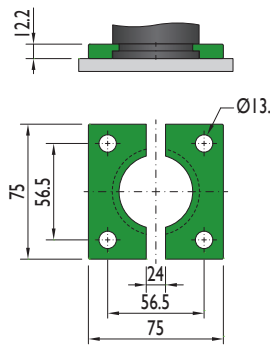
MC-1000



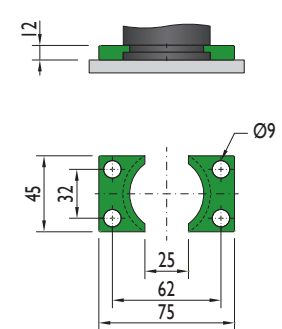
GR-750



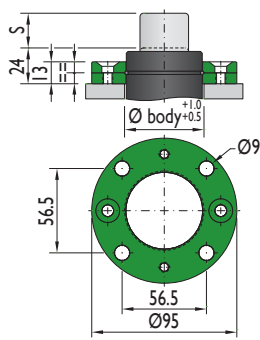
MT-1000



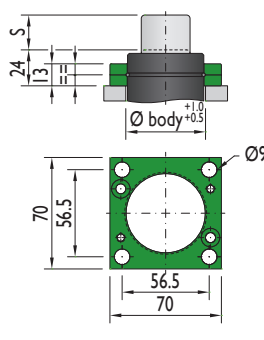
AR-750



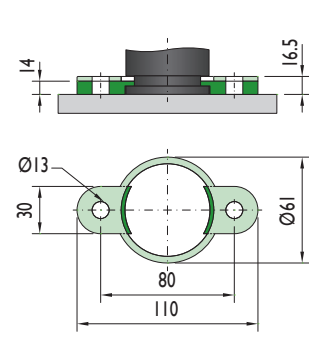
XS-750



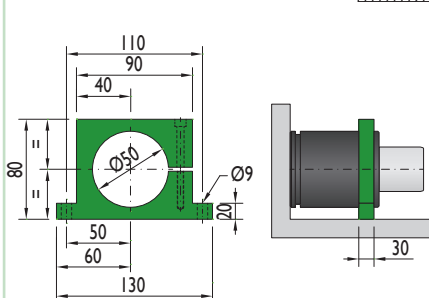
XC-750



PR-750



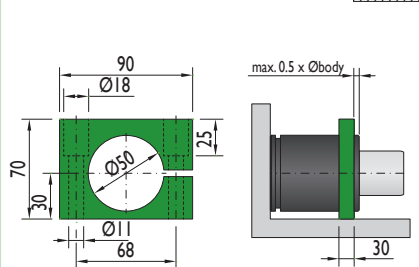
CS-750



Flange must not support spring's force



CF-750



Flange must not support spring's force



Special mounts available on
www.nitrogas.com