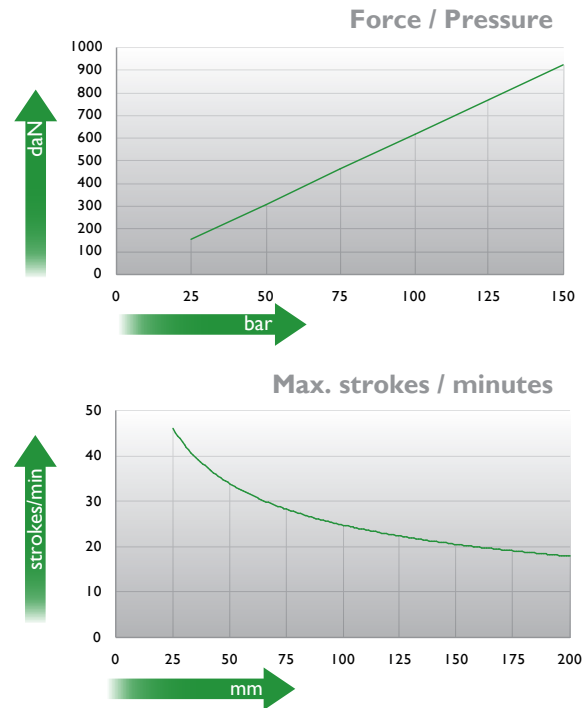
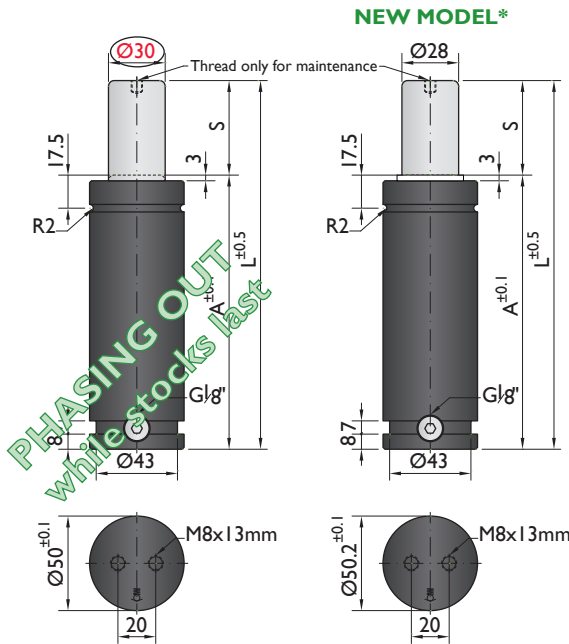




*The new cylinder will be supplied when the stock runs out.



Ordering example: 4 x HD-1000-125

Order No.	S ⁽¹⁾ mm	L mm	A mm	F ₀ ⁽²⁾ daN	F daN	(3)	kg
HD-1000-25	25	145	120	920	1300	No	1.24
HD-1000-38	38	171	133		1400	No	1.35
HD-1000-50	50	195	145		1400	No	1.67
HD-1000-63	63	221	158		1500	No	1.78
HD-1000-80	80	255	175		1500	Yes	1.92
HD-1000-100	100	295	195		1500	Yes	2.06
HD-1000-125	125	345	220		1600	Yes	2.27
HD-1000-160	160	415	255		1700	Yes	2.69
HD-1000-200	200	495	295		1700	Yes	3.13
HD-1000-250	250	595	345		1800	Yes	3.56
HD-1000-300	300	695	395		1800	Yes	3.98

⁽¹⁾ other strokes under request

⁽²⁾ alternative forces upon request

⁽³⁾ ESK available for other strokes

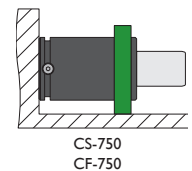
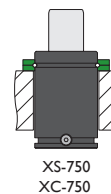
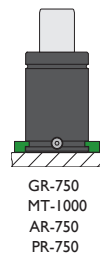
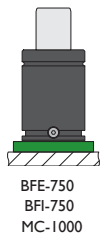
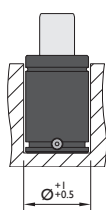
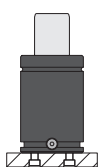


Pressure medium N₂
Max. Charging pressure 150 bar
Min. Charging pressure 25 bar

Working temperature 0-80°C
Temperature related force increase +0.34%/°C
Max. working speed 1.6 m/s

Min. security stroke 10%
Repair Kit KIT HD-1000
Linkable G1/8"

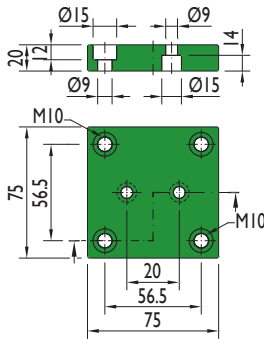
Mounting possibilities



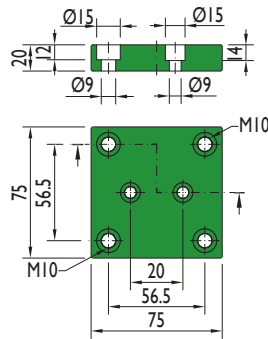
Flange must not support spring's force

Flanges

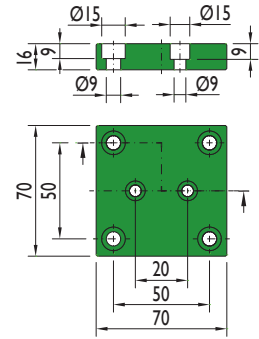
BFE-750



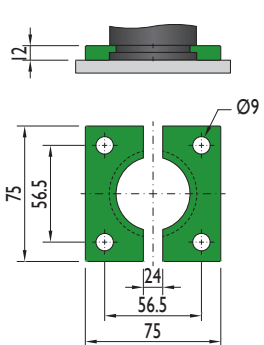
BFI-750



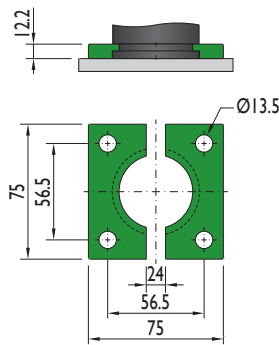
MC-1000



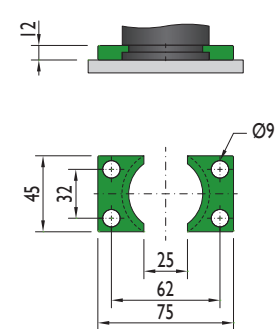
GR-750



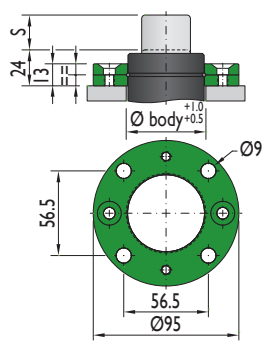
MT-1000



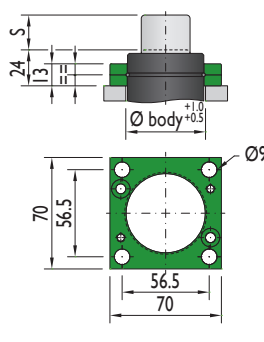
AR-750



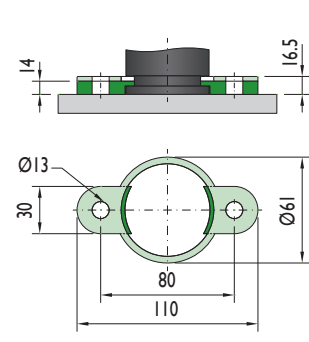
XS-750



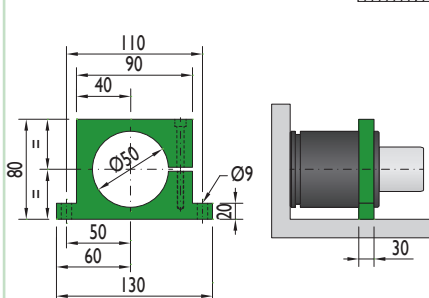
XC-750



PR-750

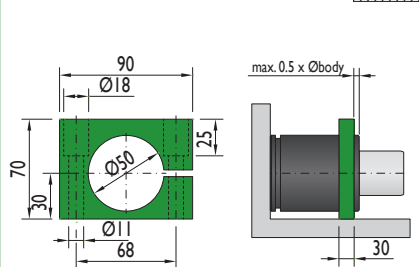


CS-750



Flange must not support spring's force

CF-750



Flange must not support spring's force