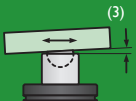


Ordering example: 4 x HD-2400-50

Order No.	S ⁽¹⁾ mm	L mm	A mm	F ₀ ⁽²⁾ daN (20°C, 150 bar)	F daN		kg
HD-2400-25	25	160	135	2400	3000	No	3.16
HD-2400-38	38	186	148		3200	No	3.41
HD-2400-50	50	210	160		3300	No	3.75
HD-2400-63	63	236	173		3400	No	4.00
HD-2400-80	80	270	190		3600	Yes	4.32
HD-2400-100	100	310	210		3600	Yes	4.59
HD-2400-125	125	360	235		3700	Yes	5.04
HD-2400-160	160	430	270		3800	Yes	5.68
HD-2400-200	200	510	310		3900	Yes	6.42
HD-2400-250	250	610	360		3900	Yes	7.21
HD-2400-300	300	710	410	4000	Yes	8.00	

⁽¹⁾ other strokes under request

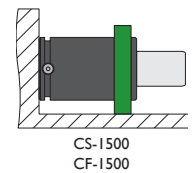
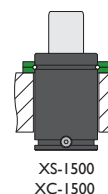
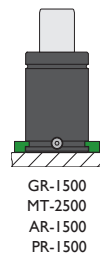
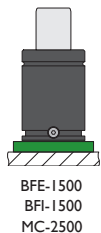
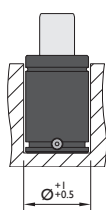
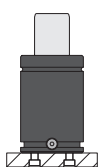
⁽²⁾ alternative forces upon request

⁽³⁾ ESK available for other strokes



Pressure medium	N ₂	Working temperature	0-80°C	Min. security stroke	10%
Max. Charging pressure	150 bar	Temperature related force increase	+0.34%/°C	Repair Kit	KIT HD-2400
Min. Charging pressure	25 bar	Max. working speed	1.6 m/s	Linkable	G1/8"

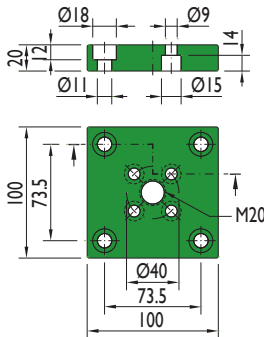
Mounting possibilities



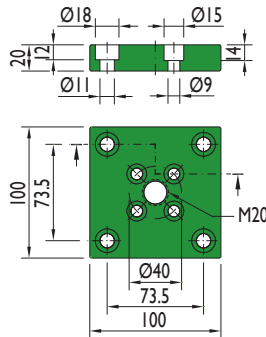
Flange must not support spring's force

Flanges

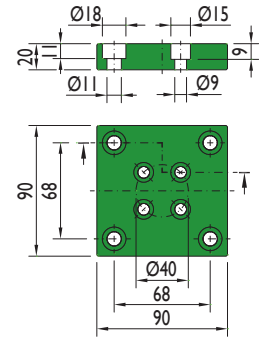
BFE-1500



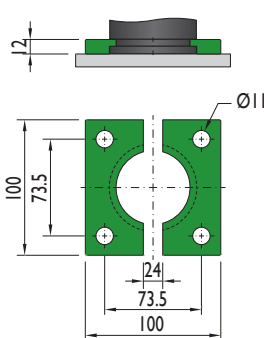
BFI-1500



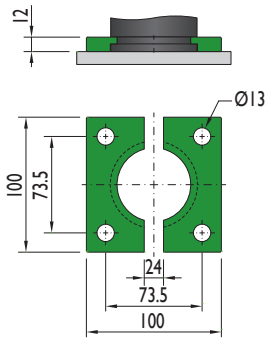
MC-2500



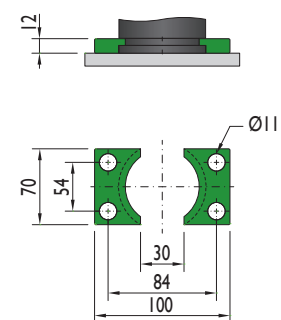
GR-1500



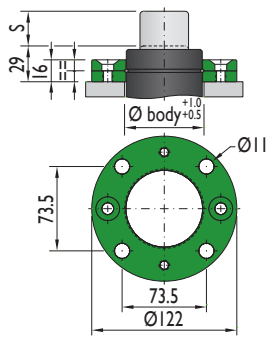
MT-2500



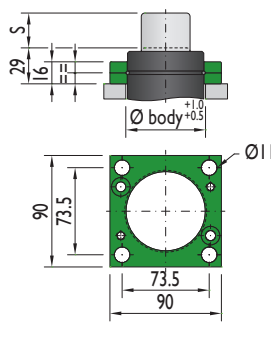
AR-1500



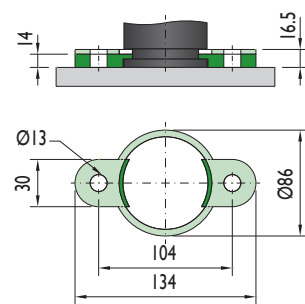
XS-1500



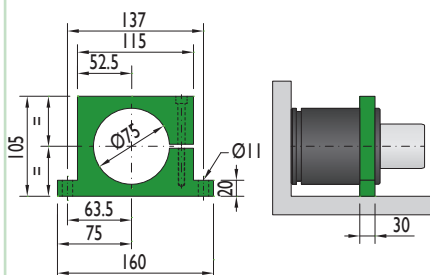
XC-1500



PR-1500

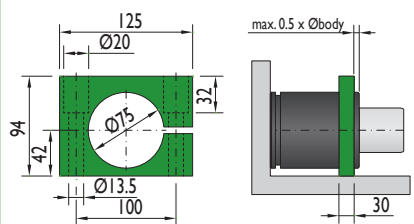


CS-1500



Flange must not support spring's force

CF-1500



Flange must not support spring's force