

Ordering example: 4 x HD-4200-125

Order No.	S ⁽¹⁾ mm	L mm	A mm	F ₀ ⁽²⁾ daN	F daN	(3)	kg
HD-4200-25	25	170	145	4200	5500	No	6.18
HD-4200-38	38	196	158		5900	No	6.52
HD-4200-50	50	220	170		6100	No	7.20
HD-4200-63	63	246	183		6400	No	7.56
HD-4200-80	80	280	200		6900	Yes	7.95
HD-4200-100	100	320	220		7100	Yes	8.22
HD-4200-125	125	370	245		7300	Yes	8.95
HD-4200-160	160	440	280		7500	Yes	10.14
HD-4200-200	200	520	320		7600	Yes	11.05
HD-4200-250	250	620	370		7700	Yes	11.58
HD-4200-300	300	720	420		7800	Yes	12.65

⁽¹⁾ other strokes under request

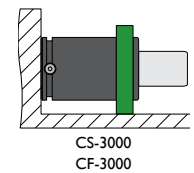
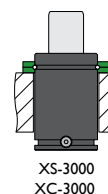
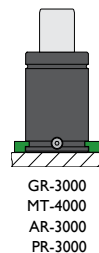
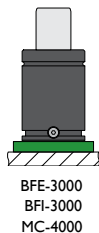
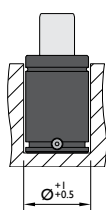
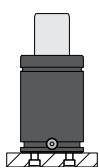
⁽²⁾ alternative forces upon request

⁽³⁾ ESK available for other strokes



Pressure medium	N ₂	Working temperature	0-80°C	Min. security stroke	10%
Max. Charging pressure	150 bar	Temperature related force increase	+0.34%/°C	Repair Kit	KIT HD-4200
Min. Charging pressure	25 bar	Max. working speed	1.6 m/s	Linkable	G1/8"

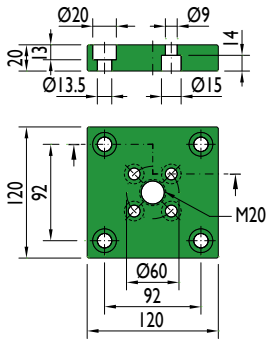
Mounting possibilities



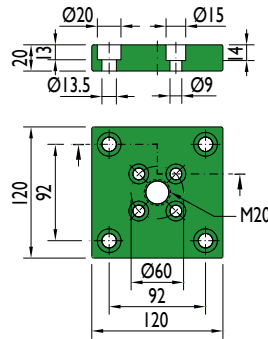
Flange must not support spring's force

Flanges

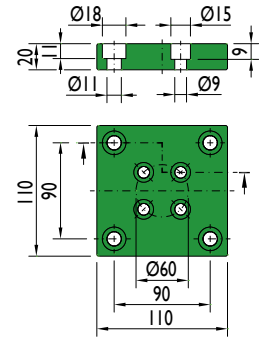
BFE-3000



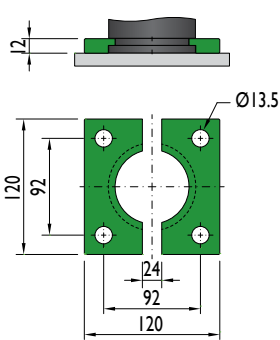
BFI-3000



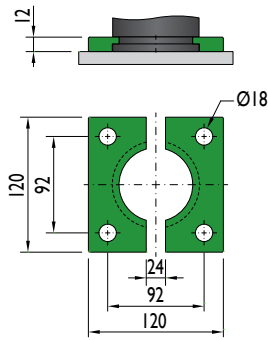
MC-4000



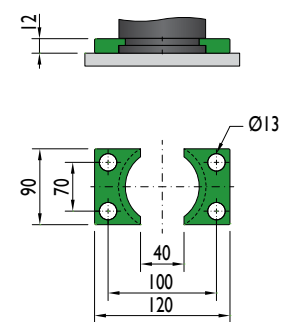
GR-3000



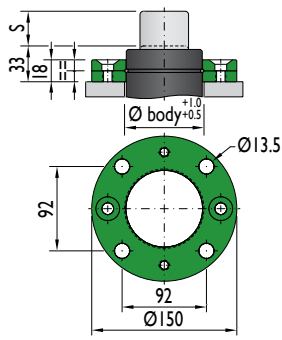
MT-4000



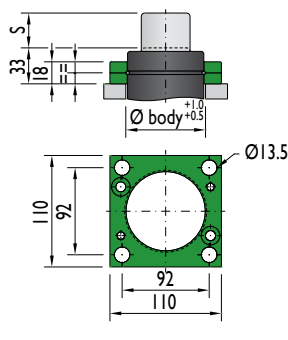
AR-3000



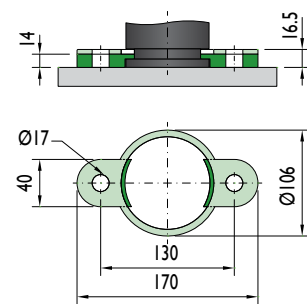
XS-3000



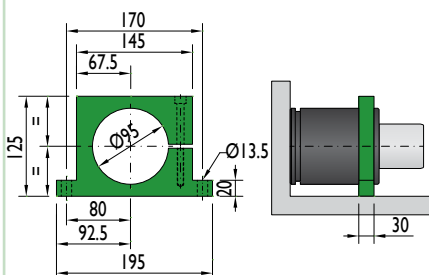
XC-3000



PR-3000

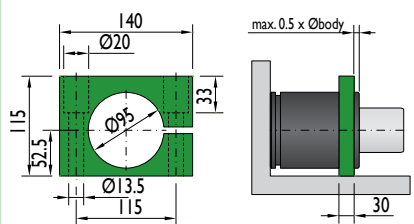


CS-3000



Flange must not support spring's force

CF-3000



Flange must not support spring's force