


Ordering example: 4 x HD-6600-125

Order No.	S <sup>(1)</sup> mm	L mm	A mm	F <sub>0</sub> <sup>(2)</sup> daN	F daN	 <sup>(3)</sup>	kg
				(20°C, 150 bar)			
HD-6600-25	25	190	165	6600	8100	No	13.35
HD-6600-38	38	216	178		8600	No	14.62
HD-6600-50	50	240	190		9000	No	16.55
HD-6600-63	63	266	203		9300	No	17.85
HD-6600-80	80	300	220		10000	No	18.63
HD-6600-100	100	340	240		10300	Yes	19.32
HD-6600-125	125	390	265		10600	Yes	19.95
HD-6600-160	160	460	300		10900	Yes	20.81
HD-6600-200	200	540	340		11200	Yes	21.55
HD-6600-250	250	640	390		11500	Yes	23.58
HD-6600-300	300	740	440	11800	Yes	25.61	

<sup>(1)</sup> other strokes under request

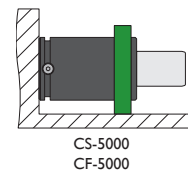
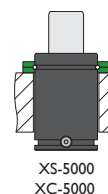
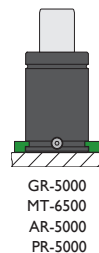
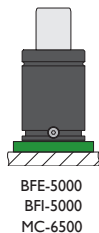
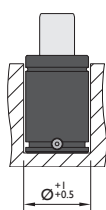
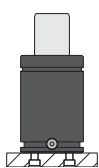
<sup>(2)</sup> alternative forces upon request

<sup>(3)</sup> ESK available for other strokes



Pressure medium	N <sub>2</sub>	Working temperature	0-80°C	Min. security stroke	10%
Max. Charging pressure	150 bar	Temperature related force increase	+0.34%/°C	Repair Kit	KIT HD-6600
Min. Charging pressure	25 bar	Max. working speed	1.6 m/s	Linkable	G1/8"

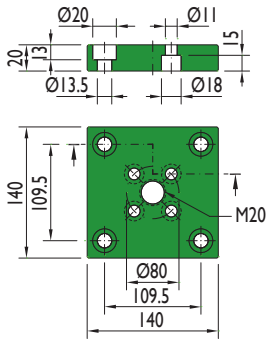
### Mounting possibilities



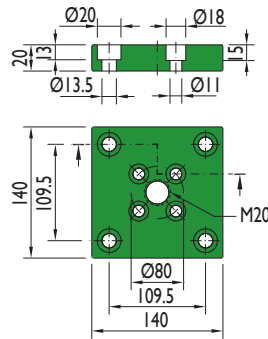
Flange must not support spring's force

## Flanges

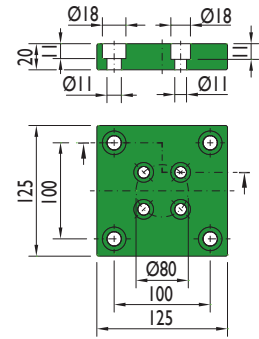
### BFE-5000



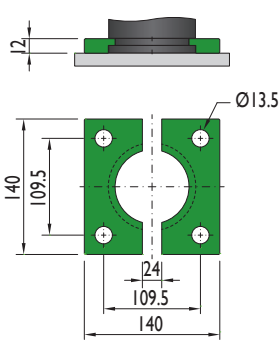
### BFI-5000



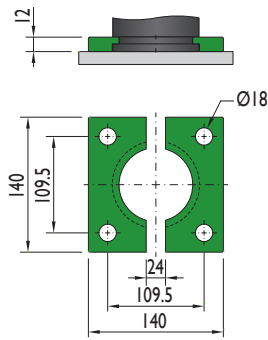
### MC-6500



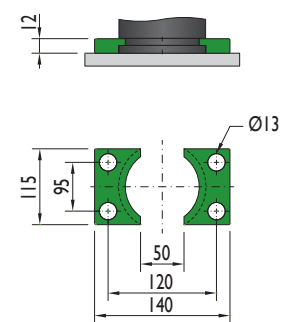
### GR-5000



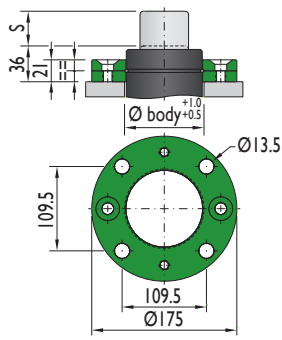
### MT-6500



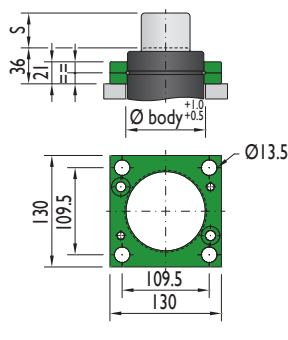
### AR-5000



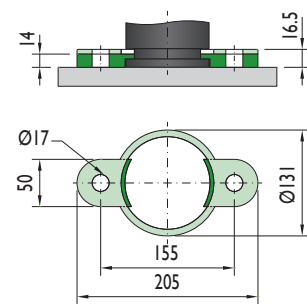
### XS-5000



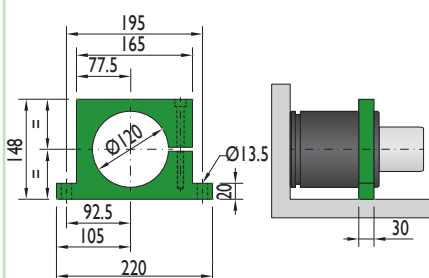
### XC-5000



### PR-5000

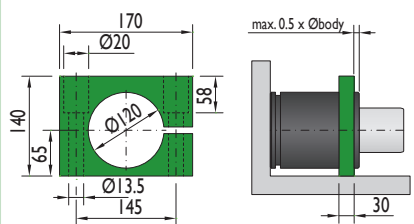


### CS-5000



Flange must not support spring's force

### CF-5000



Flange must not support spring's force