

Ordering example: 4 x HD-750-125

| Order No. | S ⁽¹⁾ mm | L mm | A mm | F ₀ ⁽²⁾ daN (20°C, 150 bar) | F daN | ⁽³⁾ | kg |
|------------|------------------------|---------|---------|---|----------|----------------|------|
| HD-750-13 | 13 | 111 | 98 | 740 | 1100 | No | 0.80 |
| HD-750-25 | 25 | 135 | 110 | | 1100 | No | 0.93 |
| HD-750-38 | 38 | 161 | 123 | | 1100 | No | 1.10 |
| HD-750-50 | 50 | 185 | 135 | | 1200 | No | 1.17 |
| HD-750-63 | 63 | 211 | 148 | | 1200 | No | 1.30 |
| HD-750-80 | 80 | 245 | 165 | | 1200 | Yes | 1.45 |
| HD-750-100 | 100 | 285 | 185 | | 1200 | Yes | 1.65 |
| HD-750-125 | 125 | 335 | 210 | | 1200 | Yes | 1.80 |
| HD-750-160 | 160 | 405 | 245 | | 1300 | Yes | 1.84 |
| HD-750-200 | 200 | 485 | 285 | | 1300 | Yes | 2.23 |

⁽¹⁾ other strokes under request

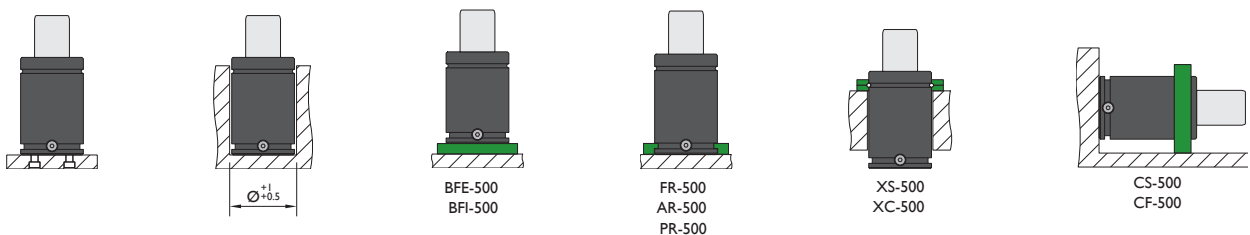
⁽²⁾ alternative forces upon request

⁽³⁾ ESK available for other strokes



| | | | | | |
|------------------------|----------------|------------------------------------|-----------|----------------------|------------|
| Pressure medium | N ₂ | Working temperature | 0-80°C | Min. security stroke | 10% |
| Max. Charging pressure | 150 bar | Temperature related force increase | +0.34%/°C | Repair Kit | KIT HD-750 |
| Min. Charging pressure | 25 bar | Max. working speed | 1.6 m/s | Linkable | G1/8" |

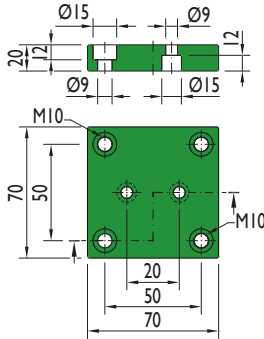
Mounting possibilities



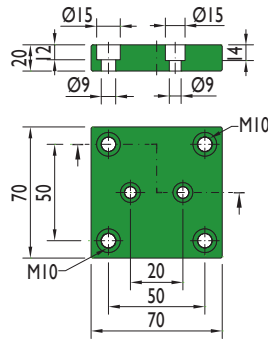
Flange must not support spring's force

Flanges

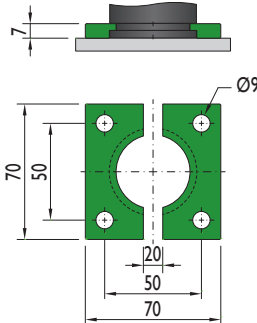
BFE-500



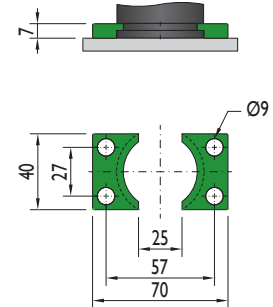
BFI-500



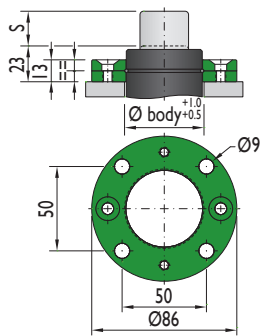
FR-500



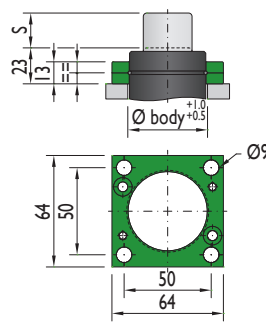
AR-500



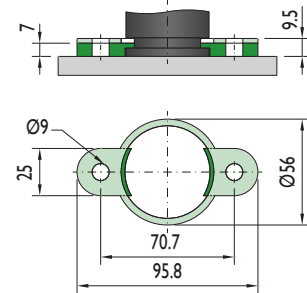
XS-500



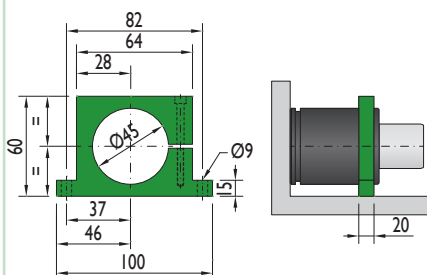
XC-500



PR-500

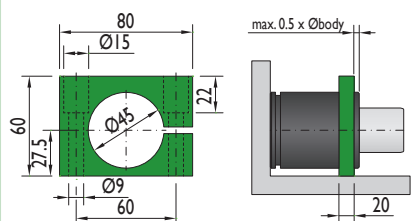


CS-500



Flange must not support spring's force

CF-500



Flange must not support spring's force