


Ordering example: 4 x HD-9500-200

Order No.	S <sup>(1)</sup> mm	L mm	A mm	F <sub>0</sub> <sup>(2)</sup> daN (20°C, 150 bar)	F daN		kg
HD-9500-25	25	205	180	9500	11700	No	17.96
HD-9500-38	38	231	193		12400	No	18.95
HD-9500-50	50	255	205		12900	No	20.62
HD-9500-63	63	281	218		13300	No	21.60
HD-9500-80	80	315	235		13800	No	22.88
HD-9500-100	100	355	255		15100	Yes	24.84
HD-9500-125	125	405	280		15400	Yes	26.74
HD-9500-160	160	475	315		15800	Yes	29.37
HD-9500-200	200	555	355		16000	Yes	32.38
HD-9500-250	250	655	405		16300	Yes	35.63
HD-9500-300	300	755	455	16500	Yes	38.87	

<sup>(1)</sup> other strokes under request

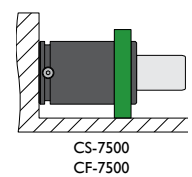
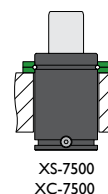
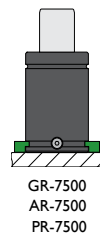
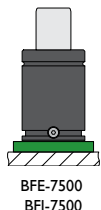
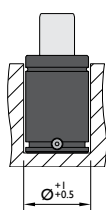
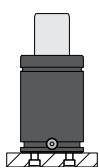
<sup>(2)</sup> alternative forces upon request

<sup>(3)</sup> ESK available for other strokes



Pressure medium	N <sub>2</sub>	Working temperature	0-80°C	Min. security stroke	10%
Max. Charging pressure	150 bar	Temperature related force increase	+0.34%/°C	Repair Kit	KIT HD-9500
Min. Charging pressure	25 bar	Max. working speed	1.6 m/s	Linkable	G1/8"

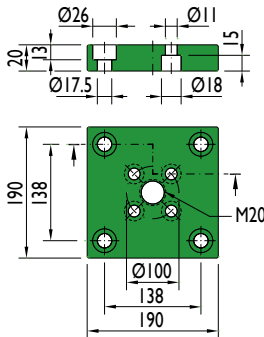
### Mounting possibilities



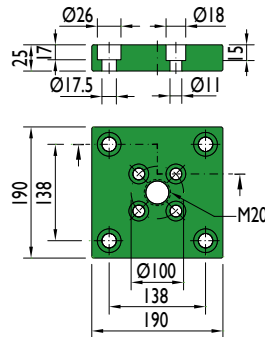
Flange must not support spring's force

## Flanges

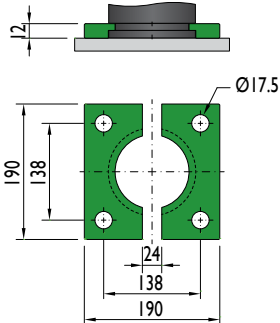
### BFE-7500



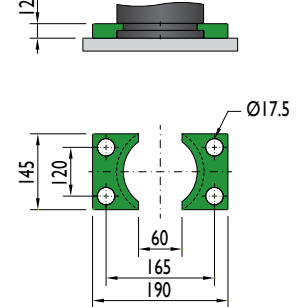
### BFI-7500



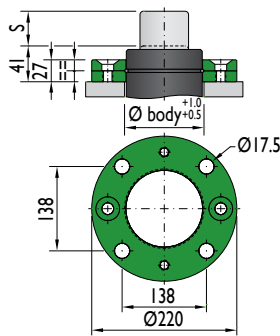
### GR-7500



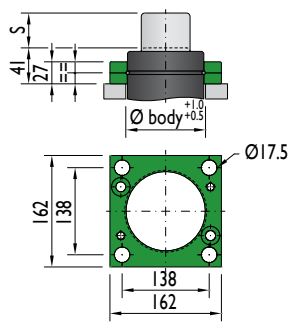
### AR-7500



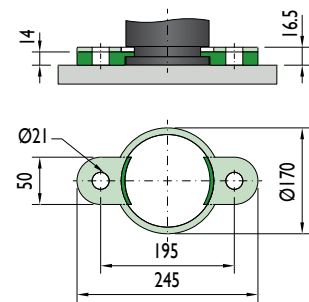
### XS-7500



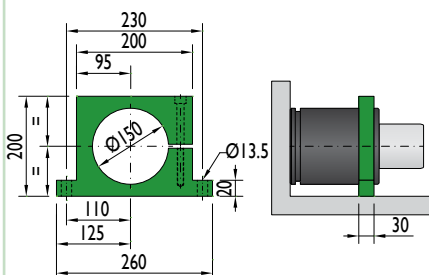
### XC-7500



### PR-7500

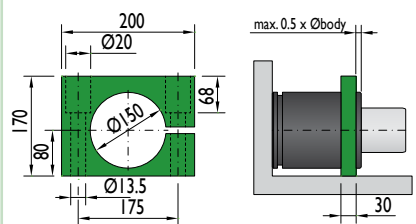


### CS-7500



Flange must not support spring's force

### CF-7500



Flange must not support spring's force