


Ordering example: 4 x KH-750-125

Order No.	S ⁽¹⁾ mm	L mm	A mm	F ₀ ⁽²⁾ daN	F daN	 ⁽³⁾	kg
				(20°C, 150 bar)			
KH-750-13	12.7	75.4	62.7		1300	No	0.73
KH-750-19	19	88	69		1300	No	0.80
KH-750-25	25	100	75		1200	No	0.84
KH-750-38	38.1	126.2	88.1		1100	No	0.95
KH-750-50	50	150	100	740	1100	Yes	1.06
KH-750-63	63.5	177	113.5		1100	Yes	1.14
KH-750-80	80	210	130		1100	Yes	1.32
KH-750-100	100	250	150		1100	Yes	1.50
KH-750-125	125	300	175		1100	Yes	1.62

⁽¹⁾ other strokes under request

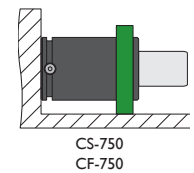
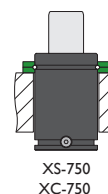
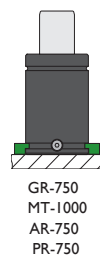
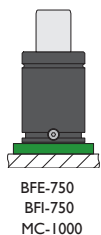
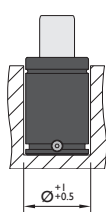
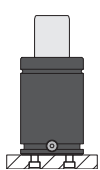
⁽²⁾ alternative forces upon request

⁽³⁾ ESK available for other strokes



Pressure medium	N ₂	Working temperature	0-80°C	Min. security stroke	10%
Max. Charging pressure	150 bar	Temperature related force increase	+0.34%/°C	Repair Kit	KIT KH-750
Min. Charging pressure	25 bar	Max. working speed	1.6 m/s	Linkable	G1/8"

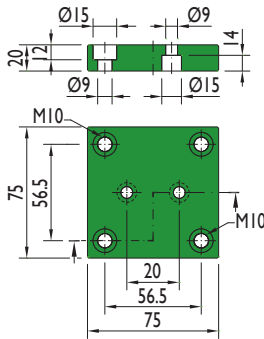
Mounting possibilities



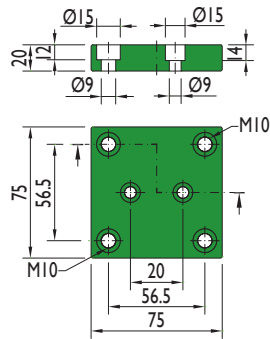
Flange must not support spring's force

Flanges

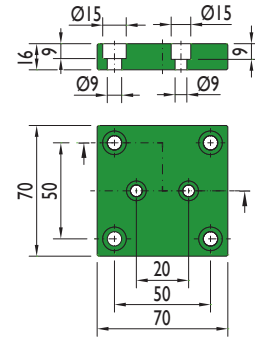
BFE-750



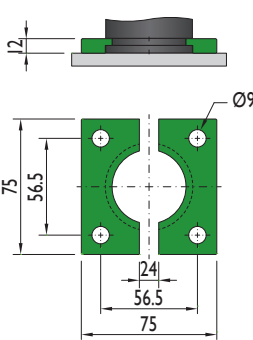
BFI-750



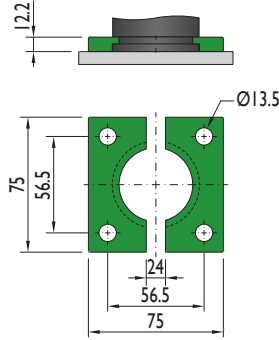
MC-1000



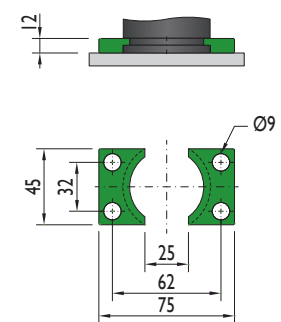
GR-750



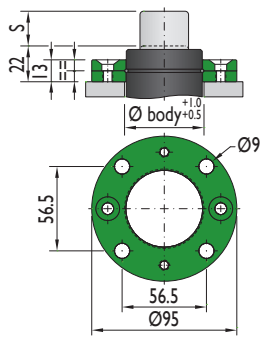
MT-1000



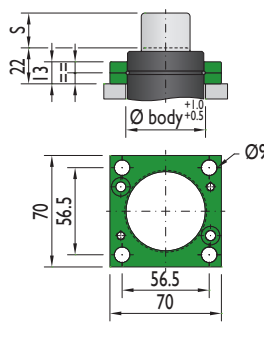
AR-750



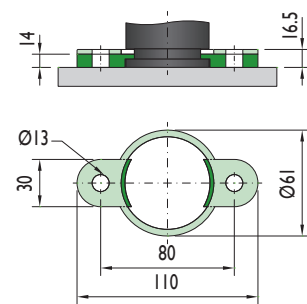
XS-750



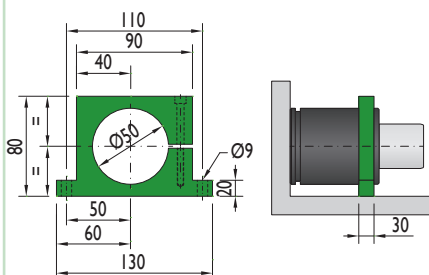
XC-750



PR-750



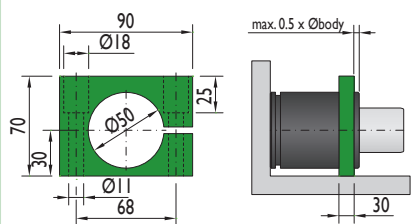
CS-750



Flange must not support spring's force



CF-750



Flange must not support spring's force

