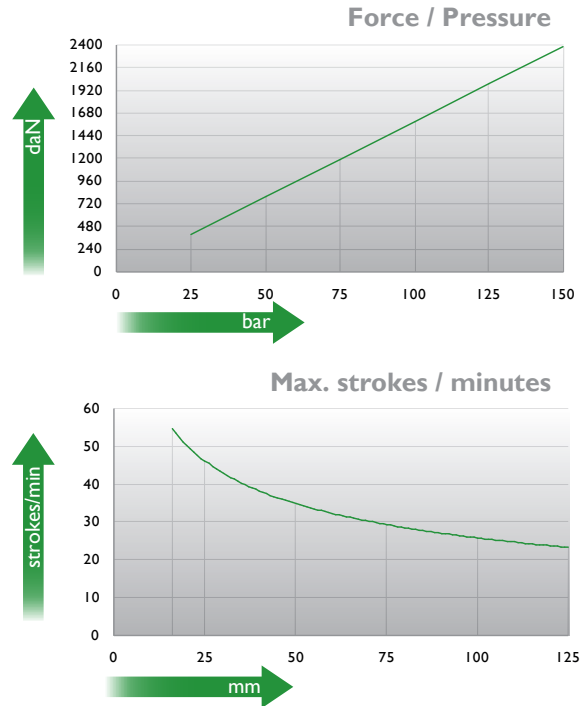
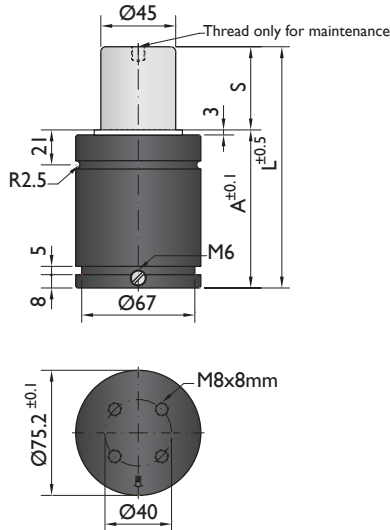





PSA  
E24.54.815.G



Ordering example: 4 x KP-2400-50

Order No.	S <sup>(1)</sup> mm	L mm	A mm	F <sub>0</sub> <sup>(2)</sup> daN (20°C, 150 bar)	F daN	 <sup>(3)</sup>	kg
KP-2400-16	16	77	61	2400	3700	No	1.54
KP-2400-19	19	83	64		3800	No	1.57
KP-2400-25	25	95	70		3900	No	1.59
KP-2400-32	32	109	77		4000	No	1.87
KP-2400-38	38	121	83		4000	No	1.94
KP-2400-50	50	145	95		4300	Yes	2.25
KP-2400-63	63	171	108		4300	Yes	2.52
KP-2400-75	75	195	120		4100	Yes	2.68
KP-2400-80	80	205	125		4100	Yes	2.75
KP-2400-100	100	245	145		4100	Yes	3.06
KP-2400-125	125	295	170	4100	Yes	3.31	

<sup>(1)</sup> other strokes under request

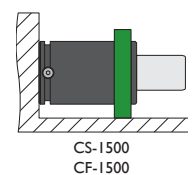
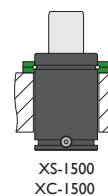
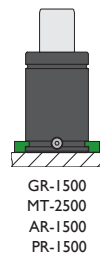
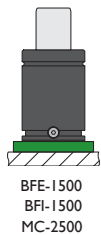
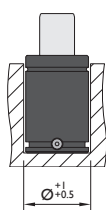
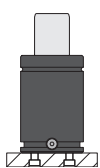
<sup>(2)</sup> alternative forces upon request

<sup>(3)</sup> ESK available for other strokes



Pressure medium	N <sub>2</sub>	Working temperature	0-80°C	Min. security stroke	10%
Max. Charging pressure	150 bar	Temperature related force increase	+0.34%/°C	Repair Kit	KIT KP-2400
Min. Charging pressure	25 bar	Max. working speed	1.6 m/s	Linkable	M6

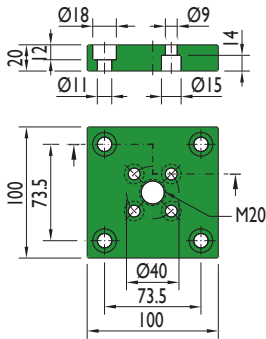
## Mounting possibilities



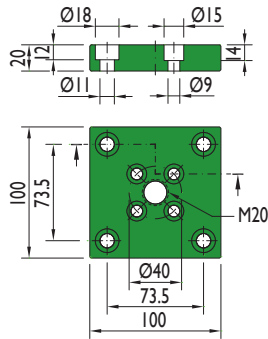
Flange must not support spring's force

## Flanges

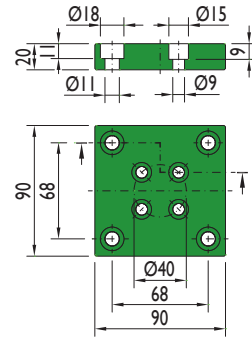
**BFE-1500**



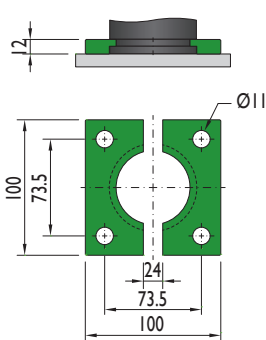
**BFI-1500**



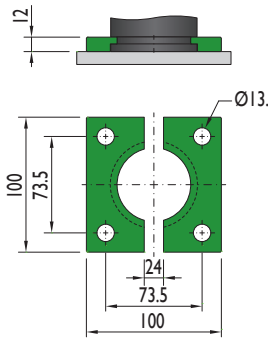
**MC-2500**



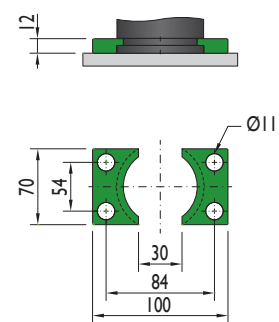
**GR-1500**



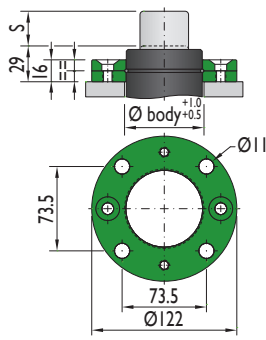
**MT-2500**



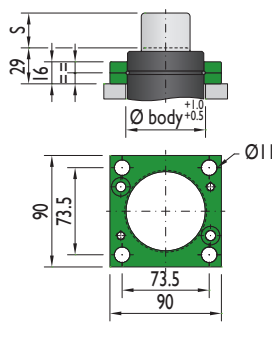
**AR-1500**



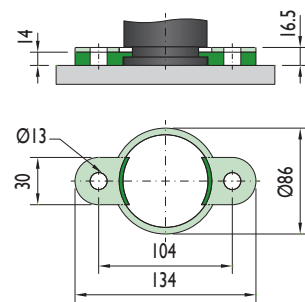
**XS-1500**



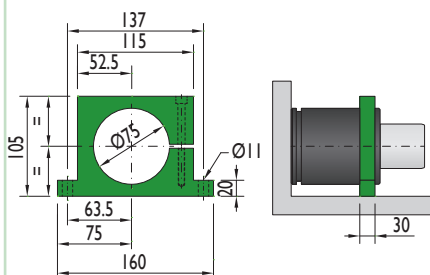
**XC-1500**



**PR-1500**

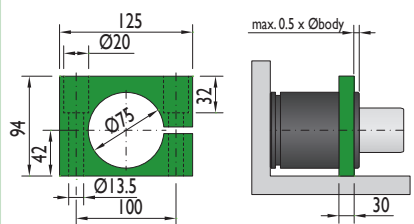


**CS-1500**



Flange must not support spring's force

**CF-1500**



Flange must not support spring's force