

Ordering example: 4 x NR-350-125

| Order No. | S ⁽¹⁾ mm | L mm | A mm | F ₀ ⁽²⁾ daN | F daN | kg |
|------------|------------------------|---------|---------|--------------------------------------|----------|------|
| | | | | (20°C, 180 bar) | | |
| NR-350-10 | 10 | 60 | 50 | | 530 | 0.23 |
| NR-350-13 | 13 | 66 | 53 | | 540 | 0.23 |
| NR-350-16 | 16 | 72 | 56 | | 540 | 0.24 |
| NR-350-19 | 19 | 78 | 59 | | 540 | 0.25 |
| NR-350-25 | 25 | 90 | 65 | | 540 | 0.27 |
| NR-350-32 | 32 | 104 | 72 | | 540 | 0.29 |
| NR-350-38 | 38 | 116 | 78 | 360 | 540 | 0.31 |
| NR-350-50 | 50 | 140 | 90 | | 550 | 0.35 |
| NR-350-63 | 63 | 166 | 103 | | 550 | 0.39 |
| NR-350-75 | 75 | 190 | 115 | | 550 | 0.43 |
| NR-350-80 | 80 | 200 | 120 | | 550 | 0.44 |
| NR-350-100 | 100 | 240 | 140 | | 550 | 0.50 |
| NR-350-125 | 125 | 290 | 165 | | 550 | 0.58 |

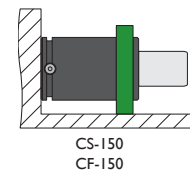
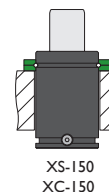
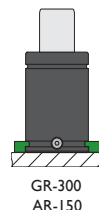
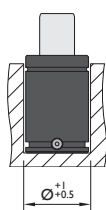
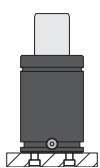
⁽¹⁾ other strokes under request

⁽²⁾ alternative forces upon request



| | | | | | |
|------------------------|----------------|------------------------------------|-----------|----------------------|------------|
| Pressure medium | N ₂ | Working temperature | 0-80°C | Min. security stroke | 10% |
| Max. Charging pressure | 180 bar | Temperature related force increase | +0.34%/°C | Repair Kit | KIT NR-350 |
| Min. Charging pressure | 25 bar | Max. working speed | 1.6 m/s | Linkable | M6 |

Mounting possibilities

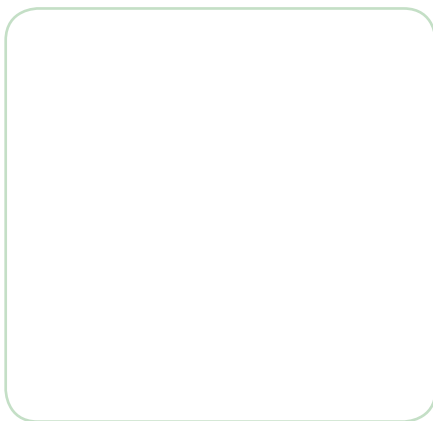


Flange must not support spring's force

Flanges



GR-300



AR-150

XS-150

XC-150



CS-150

Flange must not support spring's force

CF-150

Flange must not support spring's force

