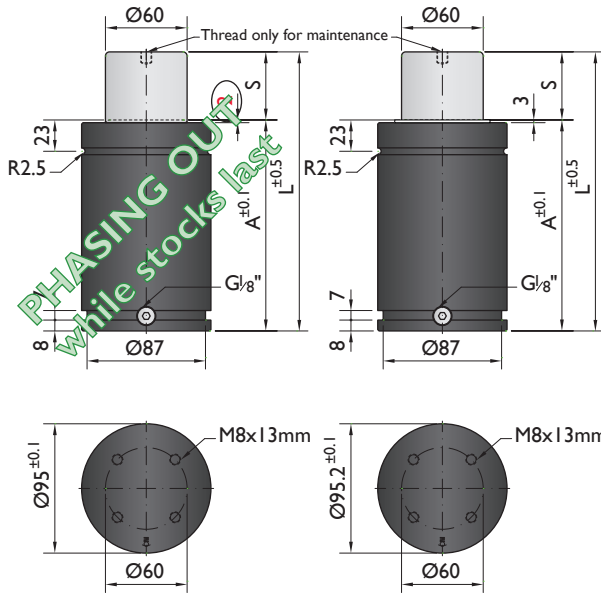


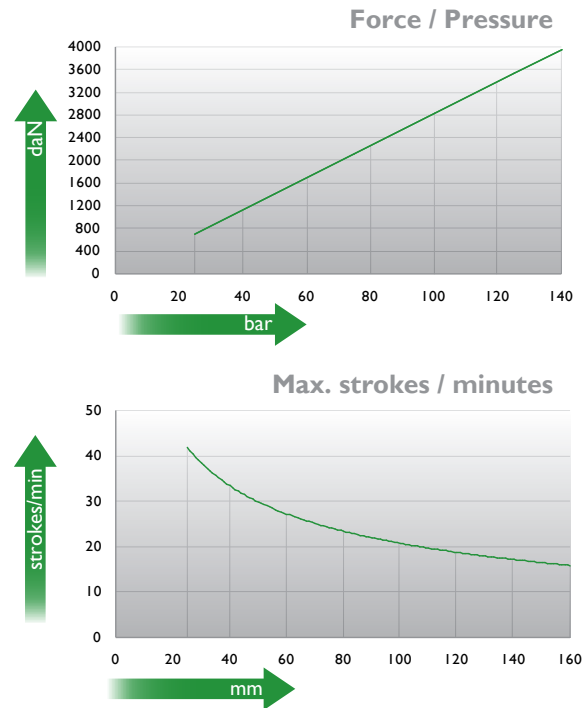


\*The new cylinder will be supplied when the stock runs out.


### NEW MODEL\*



PHASING OUT  
While stocks last



Ordering example: 4 x M-4000-125

Order No.	S <sup>(1)</sup> mm	L mm	A mm	F <sub>0</sub> <sup>(2)</sup> daN	F daN		kg
				(20°C, 140 bar)			
M-4000-25	25	155	130	4000	5500	No	4.90
M-4000-38	38	181	143		5800	No	5.41
M-4000-50	50	205	155		6100	No	5.91
M-4000-63	63	236	173		6200	No	6.22
M-4000-80	80	270	190		6600	Yes	6.82
M-4000-100	100	310	210		6700	Yes	7.17
M-4000-125	125	370	245		6700	Yes	8.30
M-4000-160	160	440	280		6800	Yes	8.88

other strokes <sup>(1)</sup> under request

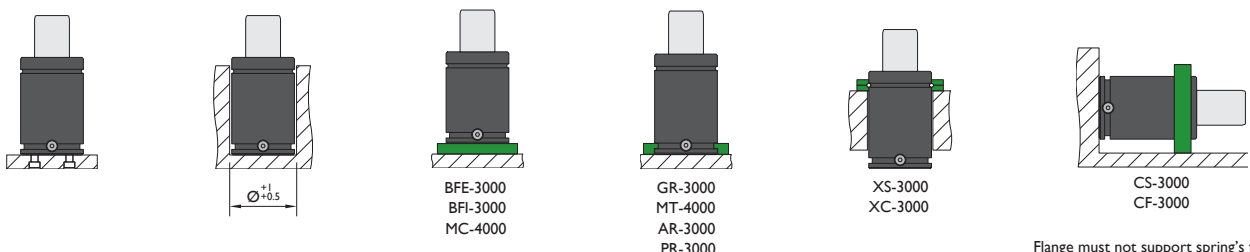
alternative forces <sup>(2)</sup> upon request

ESK available for other strokes <sup>(3)</sup>



Pressure medium	N <sub>2</sub>	Working temperature	0-80°C	Min. security stroke	10%
Max. Charging pressure	140 bar	Temperature related force increase	+0.34%/°C	Repair Kit	KIT M-4000
Min. Charging pressure	25 bar	Max. working speed	1.6 m/s	Linkable	G1/8"

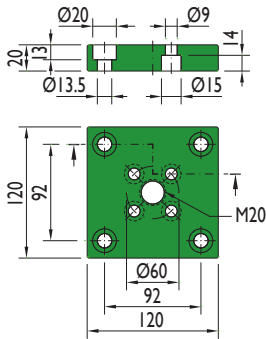
### Mounting possibilities



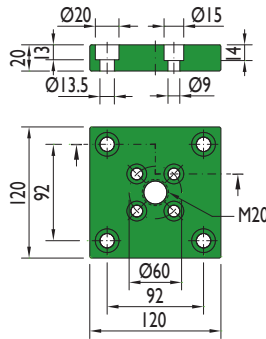
Flange must not support spring's force

## Flanges

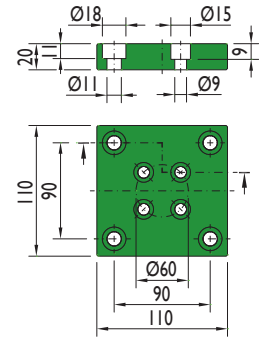
**BFE-3000**



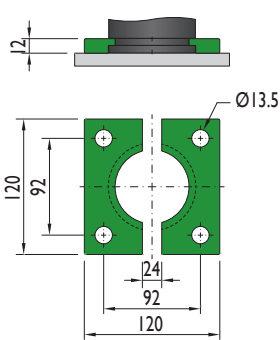
**BFI-3000**



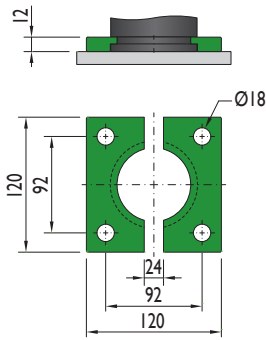
**MC-4000**



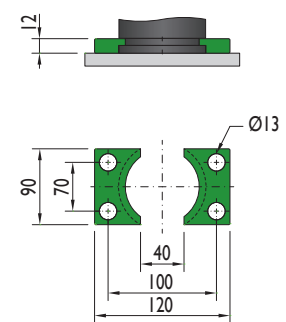
**GR-3000**



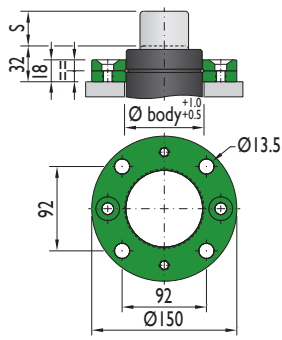
**MT-4000**



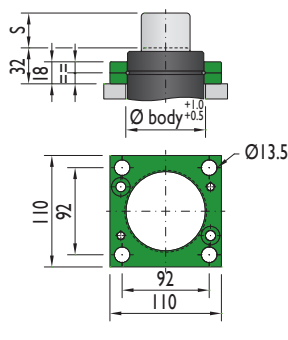
**AR-3000**



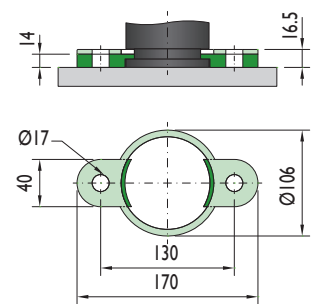
**XS-3000**



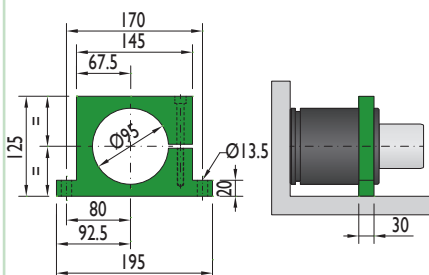
**XC-3000**



**PR-3000**

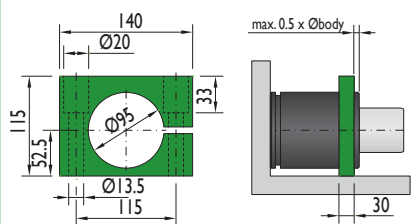


**CS-3000**



Flange must not support spring's force

**CF-3000**



Flange must not support spring's force

Special mounts available on  
[www.nitrogas.com](http://www.nitrogas.com)