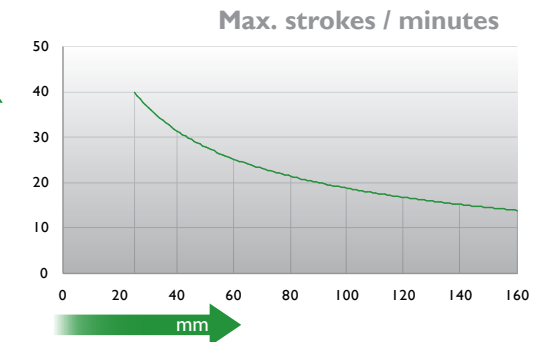
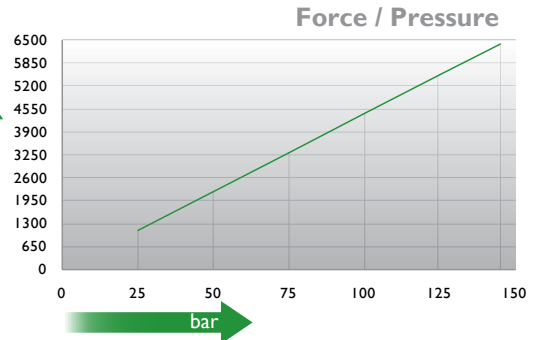
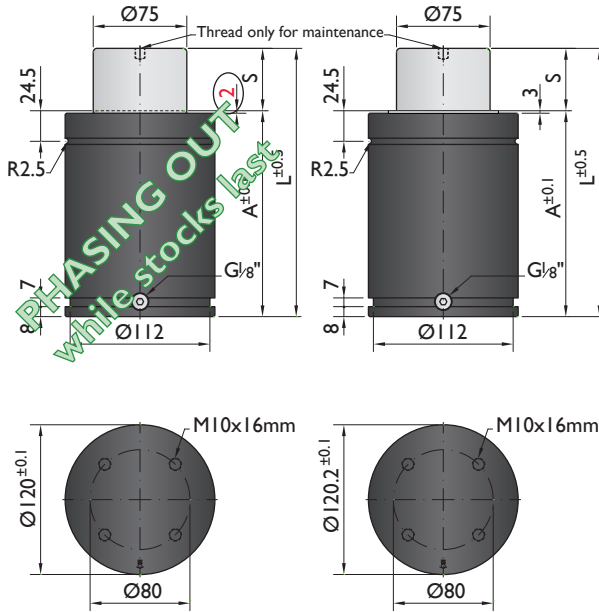





*The new cylinder will be supplied when the stock runs out.

NEW MODEL*



Ordering example: 4 x M-6500-125

Order No.	S ⁽¹⁾ mm	L mm	A mm	F ₀ ⁽²⁾ daN (20°C, 145 bar)	F daN		kg
M-6500-25	25	165	140	6400	8900	No	9.18
M-6500-38	38	191	153		9400	No	9.72
M-6500-50	50	215	165		9800	No	10.40
M-6500-63	63	241	178		10000	No	10.36
M-6500-80	80	275	195		10500	No	11.61
M-6500-100	100	315	215		10900	Yes	12.42
M-6500-125	125	375	250		10600	Yes	13.43
M-6500-160	160	450	290		10700	Yes	14.84

other strokes ⁽¹⁾ under request

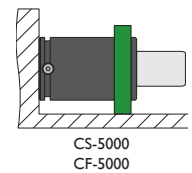
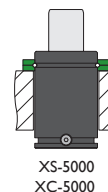
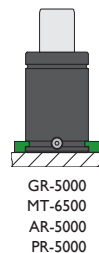
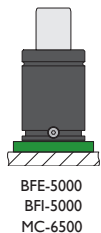
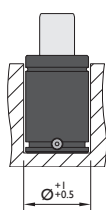
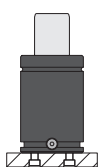
alternative forces ⁽²⁾ upon request

ESK available ⁽³⁾ for other strokes



Pressure medium	N ₂	Working temperature	0-80°C	Min. security stroke	10%
Max. Charging pressure	145 bar	Temperature related force increase	+0.34%/°C	Repair Kit	KIT M-6500
Min. Charging pressure	25 bar	Max. working speed	1.6 m/s	Linkable	G1/8"

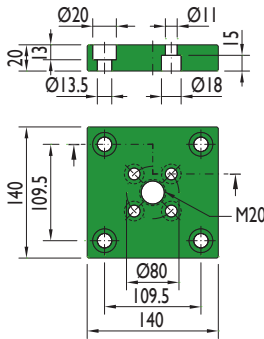
Mounting possibilities



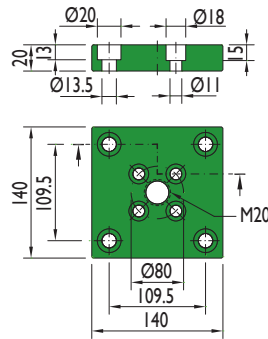
Flange must not support spring's force

Flanges

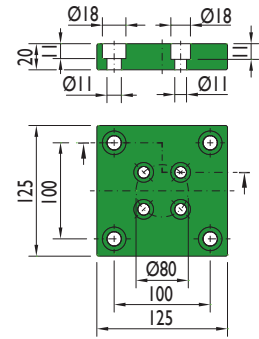
BFE-5000



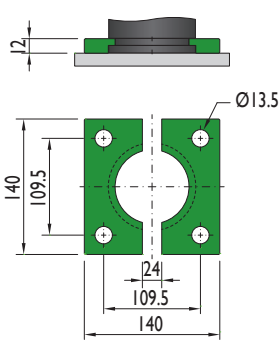
BFI-5000



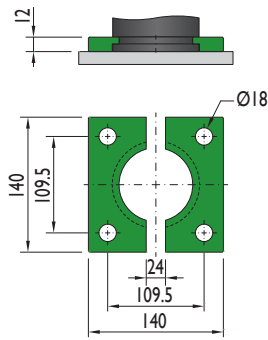
MC-6500



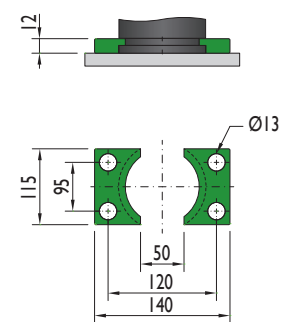
GR-5000



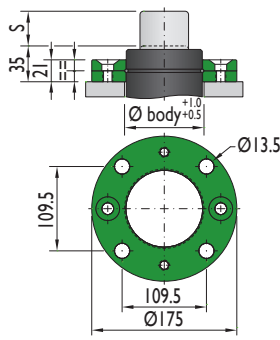
MT-6500



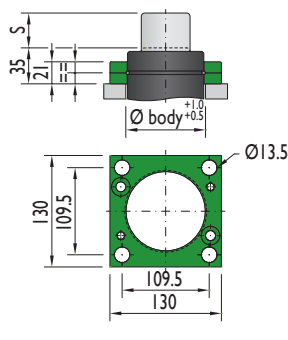
AR-5000



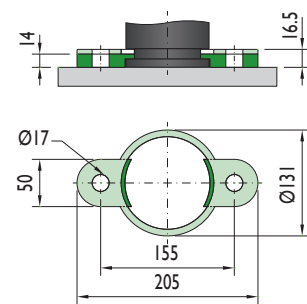
XS-5000



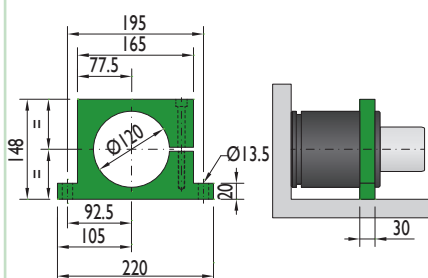
XC-5000



PR-5000

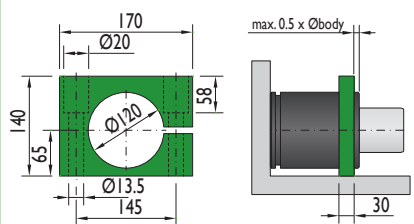


CS-5000



Flange must not support spring's force

CF-5000



Flange must not support spring's force

Special mounts available on
www.nitrogas.com