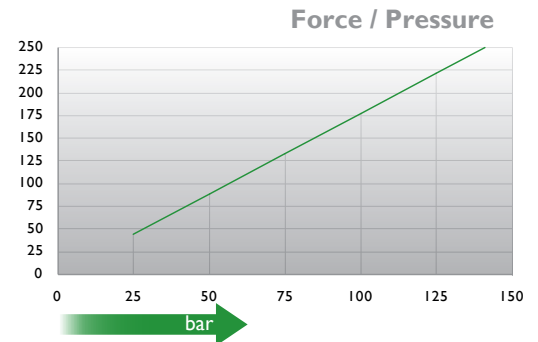
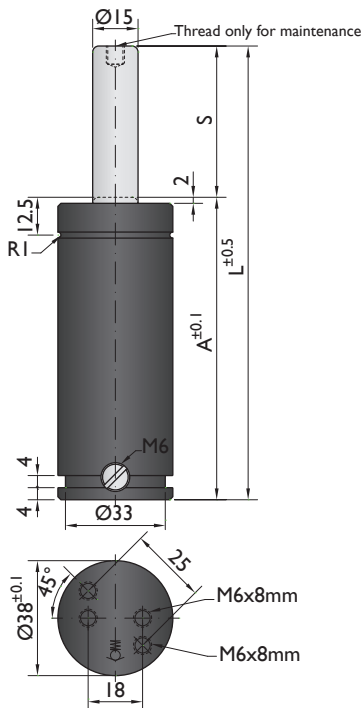




CNOMO
EM24.54.700

PSA
E24.54.815.G

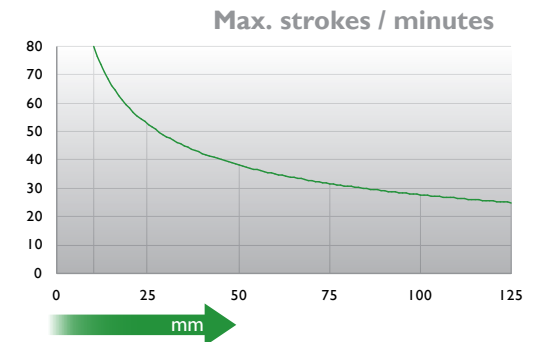


↑ daN

→ bar

↑ strokes/min

→ mm



Ordering example: 4 x CN-250-125

Order No.	S ⁽¹⁾ mm	L mm	A mm	F ₀ ⁽²⁾ daN	F daN	kg
CN-250-10	10	70	60		310	0.40
CN-250-13	12.7	75.4	62.7		310	0.42
CN-250-16	16	82	66		320	0.43
CN-250-19	19	88	69		330	0.45
CN-250-25	25	100	75		330	0.51
CN-250-38	38.1	126.2	88.1	265	340	0.57
CN-250-50	50	150	100		350	0.63
CN-250-63	63.5	177	113.5		350	0.75
CN-250-80	80	210	130		360	0.81
CN-250-100	100	250	150		360	0.92
CN-250-125	125	300	175		360	1.10

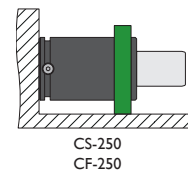
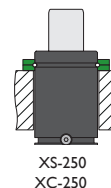
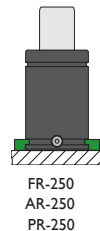
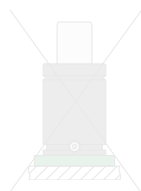
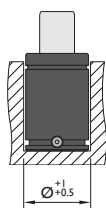
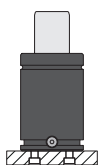
⁽¹⁾ other strokes under request

⁽²⁾ alternative forces upon request



Pressure medium	N ₂	Working temperature	0-80°C	Min. security stroke	10%
Max. Charging pressure	150 bar	Temperature related force increase	+0.34%/°C	Repair Kit	KIT CN-250
Min. Charging pressure	25 bar	Max. working speed	1.6 m/s	Linkable	M6

Mounting possibilities

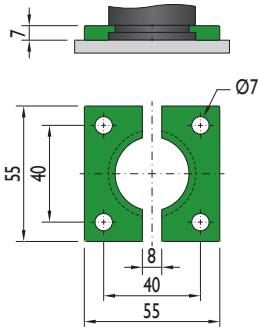


Flange must not support spring's force

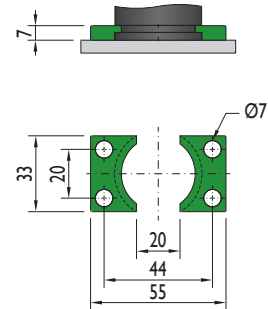
Flanges



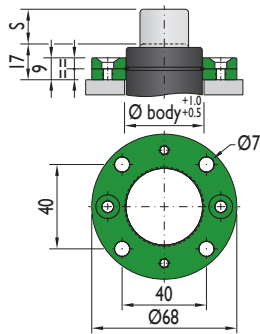
FR-250



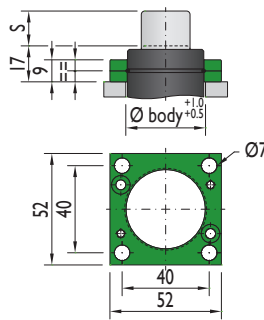
AR-250



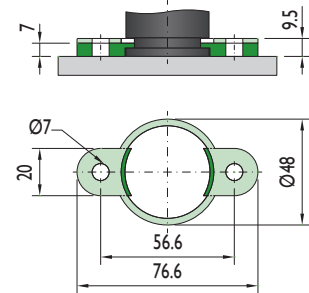
XS-250



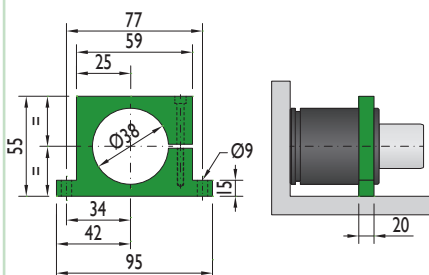
XC-250



PR-250

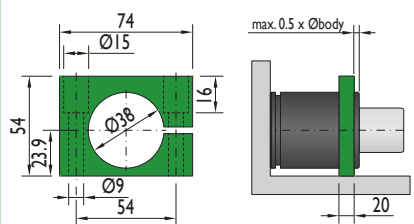


CS-250



Flange must not support spring's force

CF-250



Flange must not support spring's force

