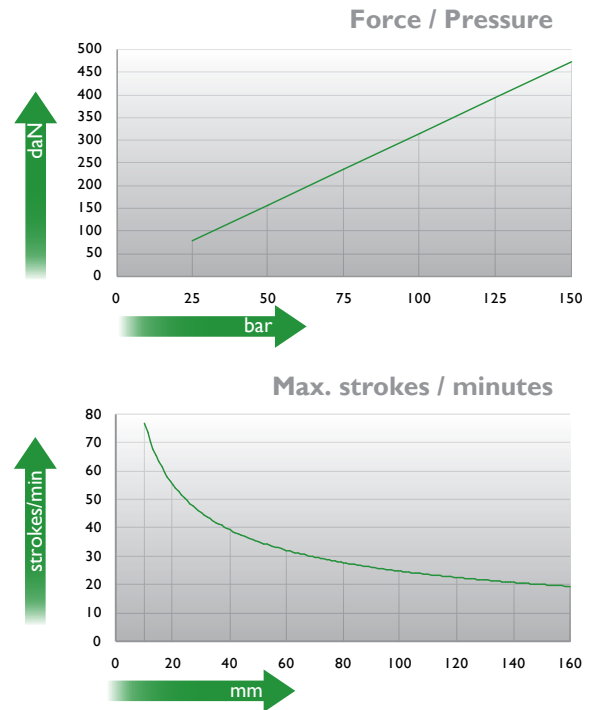
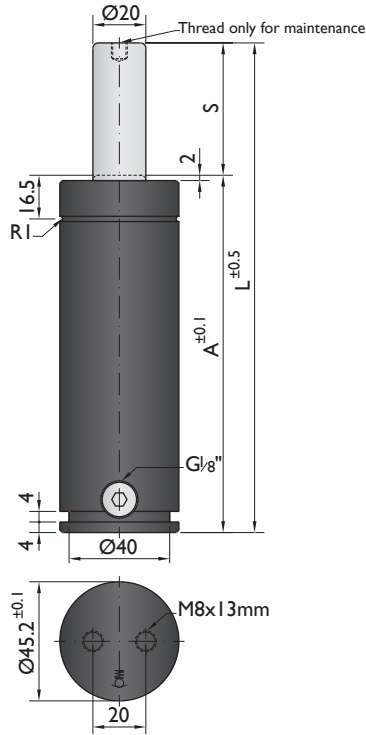




CNOMO  
EM24.54.700

PSA  
E24.54.815.G



Ordering example: 4 x CN-500-125

| Order No.  | S <sup>(1)</sup><br>mm | L<br>mm | A<br>mm | F <sub>0</sub> <sup>(2)</sup><br>daN | F<br>daN |    | kg   |
|------------|------------------------|---------|---------|--------------------------------------|----------|----|------|
|            |                        |         |         | (20°C, 150 bar)                      |          |    |      |
| CN-500-13  | 12.7                   | 110.4   | 97.7    |                                      | 540      | No | 0.73 |
| CN-500-25  | 25                     | 135     | 110     |                                      | 580      | No | 0.87 |
| CN-500-38  | 38.1                   | 161.2   | 123.1   |                                      | 610      | No | 0.96 |
| CN-500-50  | 50                     | 185     | 135     |                                      | 620      | No | 1.06 |
| CN-500-63  | 63.5                   | 212     | 148.5   | 470                                  | 630      | No | 1.18 |
| CN-500-80  | 80                     | 245     | 165     |                                      | 650      | No | 1.34 |
| CN-500-100 | 100                    | 285     | 185     |                                      | 670      | No | 1.50 |
| CN-500-125 | 125                    | 335     | 210     |                                      | 680      | No | 1.72 |
| CN-500-160 | 160                    | 405     | 245     |                                      | 690      | No | 2.03 |

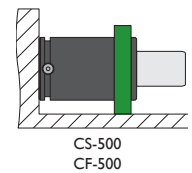
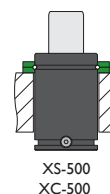
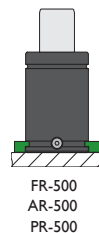
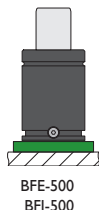
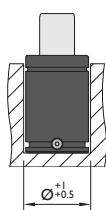
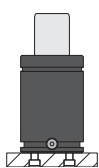
<sup>(1)</sup> other strokes under request

<sup>(2)</sup> alternative forces upon request



|                        |                |                                    |           |                      |            |
|------------------------|----------------|------------------------------------|-----------|----------------------|------------|
| Pressure medium        | N <sub>2</sub> | Working temperature                | 0-80°C    | Min. security stroke | 10%        |
| Max. Charging pressure | 150 bar        | Temperature related force increase | +0.34%/°C | Repair Kit           | KIT CN-500 |
| Min. Charging pressure | 25 bar         | Max. working speed                 | 1.6 m/s   | Linkable             | G1/8"      |

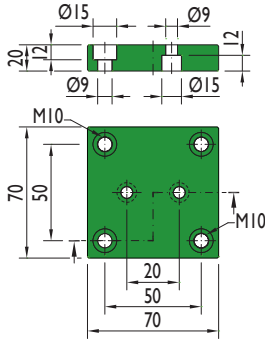
## Mounting possibilities



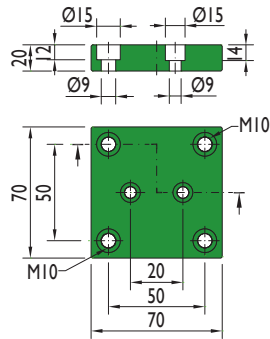
Flange must not support spring's force

## Flanges

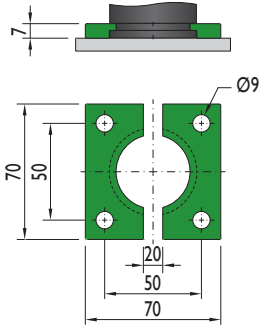
**BFE-500**



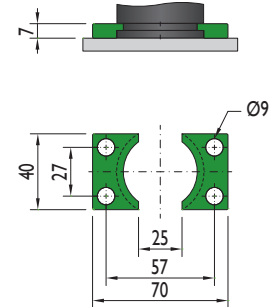
**BFI-500**



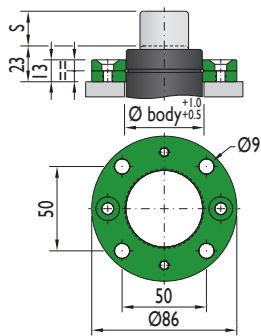
**FR-500**



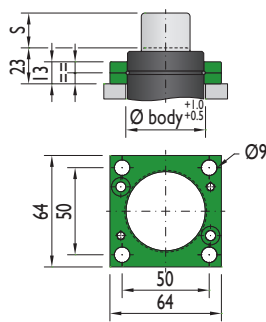
**AR-500**



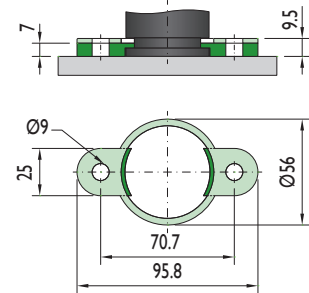
**XS-500**



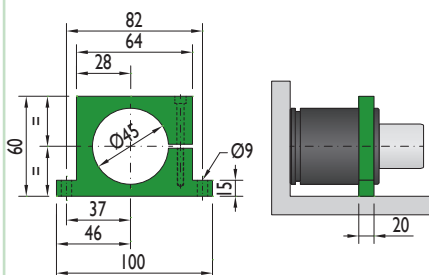
**XC-500**



**PR-500**

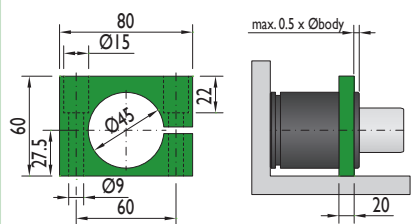


**CS-500**



Flange must not support spring's force

**CF-500**



Flange must not support spring's force

