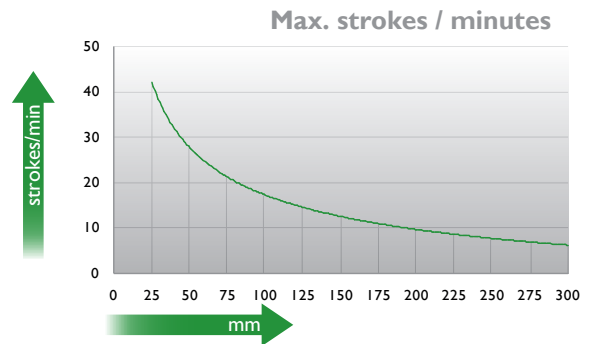
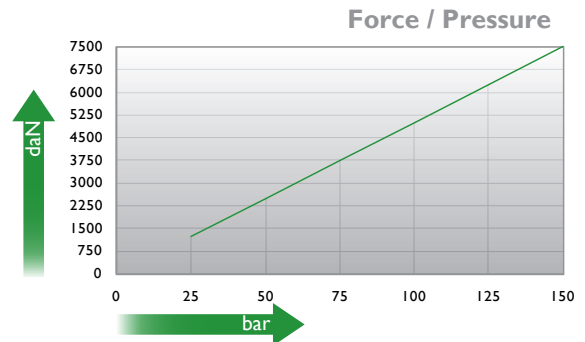
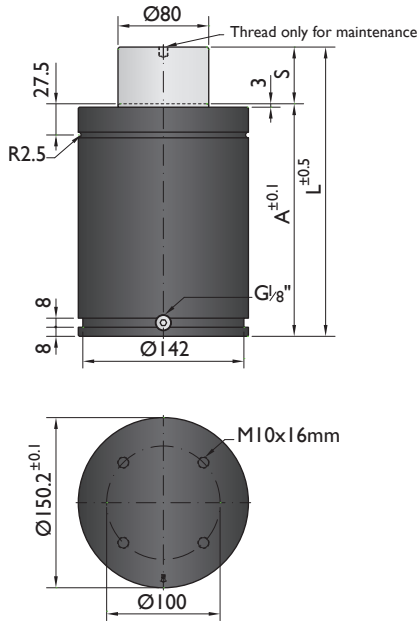


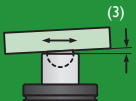


CNOMO
EM24.54.700

PSA
E24.54.815.G



Ordering example: 4 x CN-7500-125

Order No.	S ⁽¹⁾ mm	L mm	A mm	F ₀ ⁽²⁾ daN (20°C, 150 bar)	F daN		kg
CN-7500-25	25	205	180		9000	No	18.06
CN-7500-38	38.1	231.2	193.1		9400	No	18.93
CN-7500-50	50	255	205		9700	No	20.30
CN-7500-63	63.5	282	218.5		9900	No	21.08
CN-7500-80	80	315	235		10100	No	22.21
CN-7500-100	100	355	255	7500	10500	Yes	23.47
CN-7500-125	125	405	280		10700	Yes	24.96
CN-7500-160	160	475	315		10900	Yes	27.01
CN-7500-200	200	555	355		11100	Yes	29.81
CN-7500-250	250	655	405		11200	Yes	33.01
CN-7500-300	300	755	455		11300	Yes	36.11

⁽¹⁾ other strokes under request

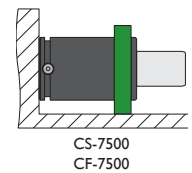
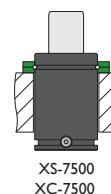
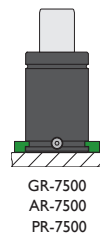
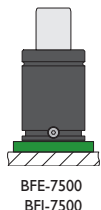
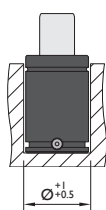
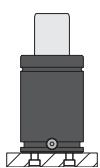
⁽²⁾ alternative forces upon request

⁽³⁾ ESK available for other strokes



Pressure medium	N ₂	Working temperature	0-80°C	Min. security stroke	10%
Max. Charging pressure	150 bar	Temperature related force increase	+0.34%/°C	Repair Kit	KIT CN-7500
Min. Charging pressure	25 bar	Max. working speed	1.6 m/s	Linkable	G1/8"

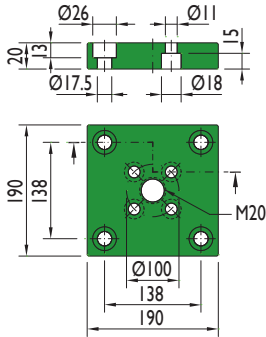
Mounting possibilities



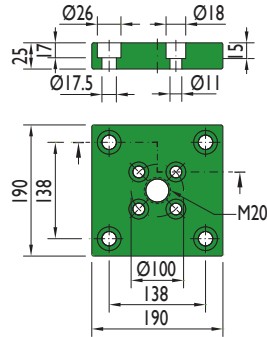
Flange must not support spring's force

Flanges

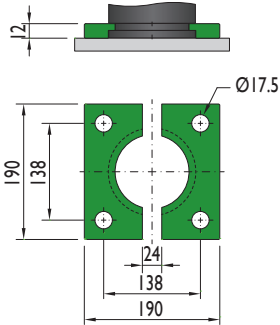
BFE-7500



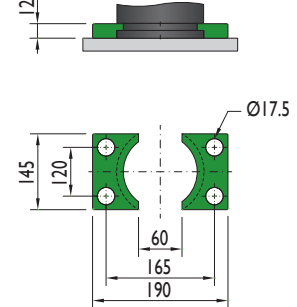
BFI-7500



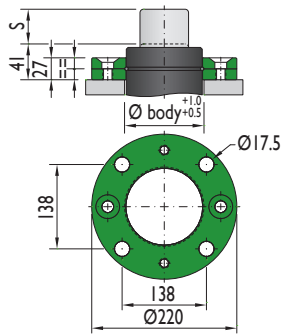
GR-7500



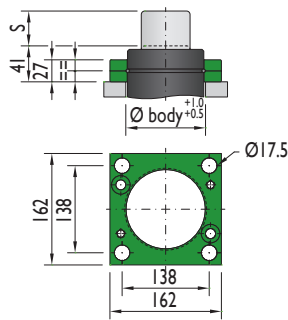
AR-7500



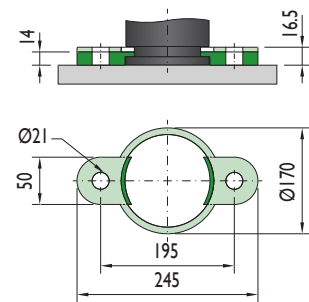
XS-7500



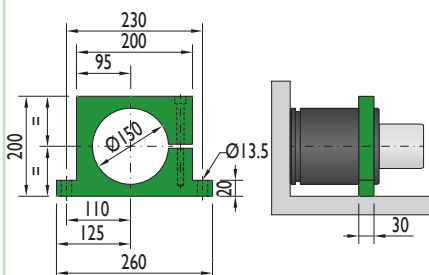
XC-7500



PR-7500



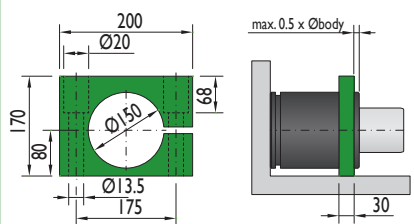
CS-7500



Flange must not support spring's force



CF-7500



Flange must not support spring's force

