

Ordering example: 4 x HG-1500-125

Order No.	S <sup>(1)</sup> mm	L mm	A mm	F <sub>0</sub> <sup>(2)</sup> daN (20°C, 150 bar)	F daN	<sup>(3)</sup>	kg
HG-1500-25	25	135	110		1900	No	2.95
HG-1500-38	37.5	160	122.5		2000	No	3.18
HG-1500-50	50	185	135		2000	No	3.41
HG-1500-63	62.5	210	147.5		2000	No	3.64
HG-1500-80	80	245	165	1500	2100	Yes	3.95
HG-1500-100	100	285	185		2100	Yes	4.33
HG-1500-125	125	335	210		2100	Yes	4.78
HG-1500-160	160	405	245		2200	Yes	5.43
HG-1500-200	200	485	285		2200	Yes	6.15

<sup>(1)</sup> other strokes under request

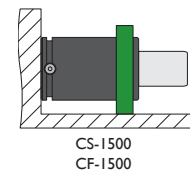
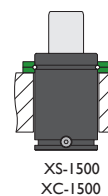
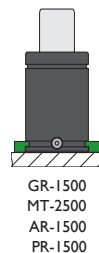
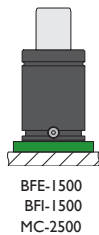
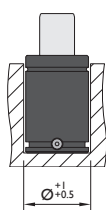
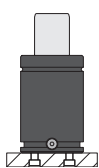
<sup>(2)</sup> alternative forces upon request

<sup>(3)</sup> ESK available for other strokes



Pressure medium	N <sub>2</sub>	Working temperature	0-80°C	Min. security stroke	10%
Max. Charging pressure	150 bar	Temperature related force increase	+0.34%/°C	Repair Kit	KIT HG-1500
Min. Charging pressure	25 bar	Max. working speed	1.6 m/s	Linkable	G1/8"

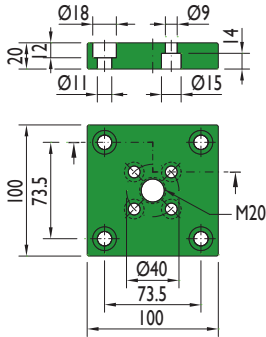
### Mounting possibilities



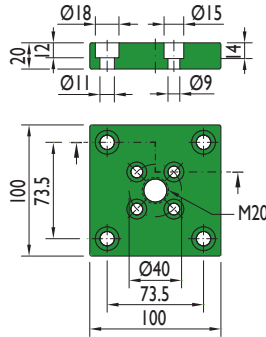
Flange must not support spring's force

## Flanges

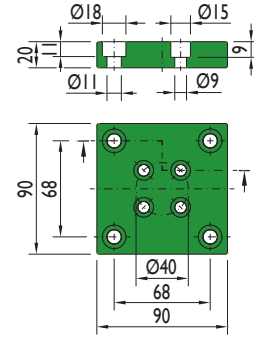
### BFE-I500



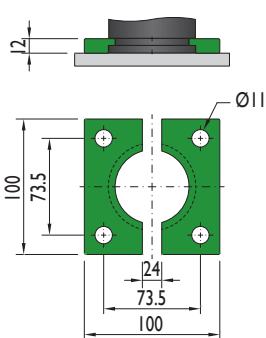
### BFI-I500



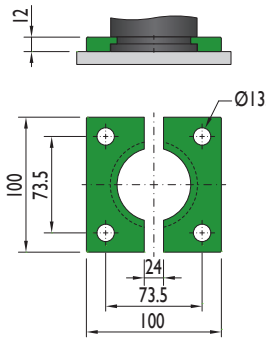
### MC-2500



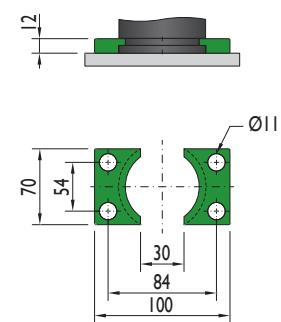
### GR-I500



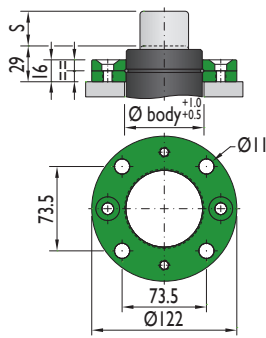
### MT-2500



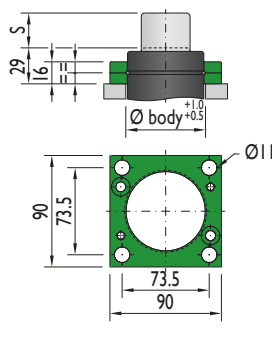
### AR-I500



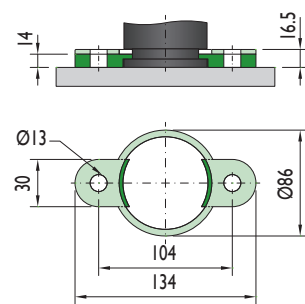
### XS-I500



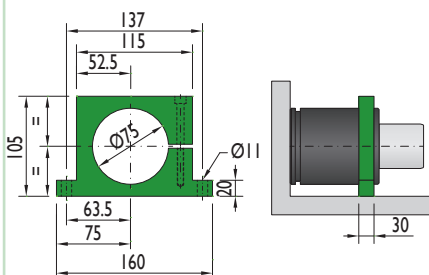
### XC-I500



### PR-I500

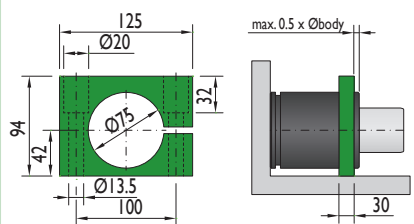


### CS-I500



Flange must not support spring's force

### CF-I500



Flange must not support spring's force