


Ordering example: 4 x K-2500-50

Order No.	S ⁽¹⁾ mm	L mm	A mm	F ₀ ⁽²⁾ daN (20°C, 155 bar)	F daN	 ⁽³⁾	kg
K-2500-12	12	84	72	2500	3500	No	1.96
K-2500-25	25	110	85		3800	No	2.18
K-2500-38	38	136	98		4000	No	2.43
K-2500-50	50	160	110		4300	Yes	2.82
K-2500-63	63	186	123		4100	Yes	2.96
K-2500-80	80	220	140		4100	Yes	3.20
K-2500-100	100	260	160		4100	Yes	3.45
K-2500-125	125	310	185		4100	Yes	3.80

other strokes ⁽¹⁾ under request

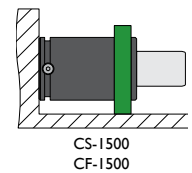
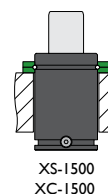
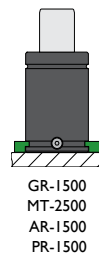
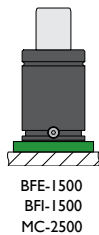
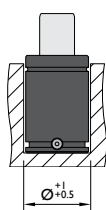
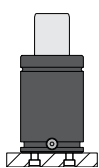
alternative forces ⁽²⁾ upon request

ESK available for other strokes ⁽³⁾



Pressure medium	N ₂	Working temperature	0-80°C	Min. security stroke	10%
Max. Charging pressure	155 bar	Temperature related force increase	+0.34%/°C	Repair Kit	KIT K-2500
Min. Charging pressure	25 bar	Max. working speed	1.6 m/s	Linkable	G1/8"

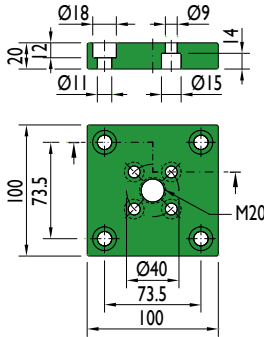
Mounting possibilities



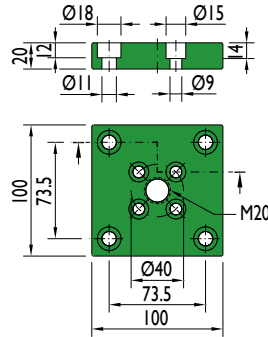
Flange must not support spring's force

Flanges

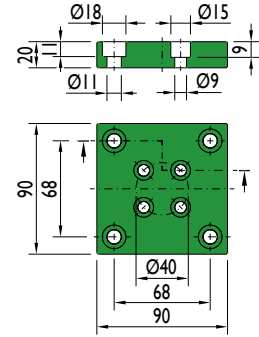
BFE-1500



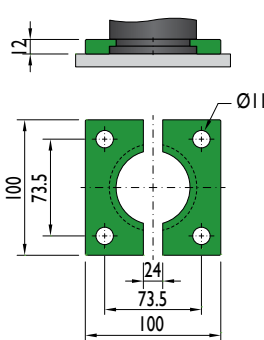
BFI-1500



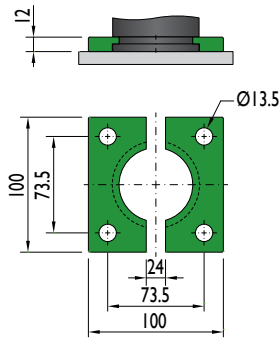
MC-2500



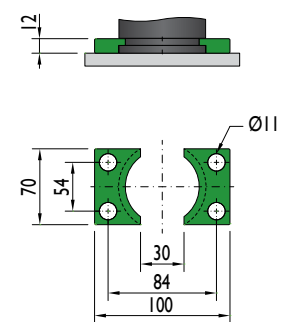
GR-1500



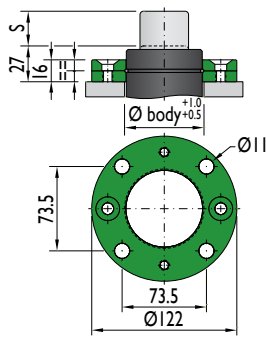
MT-2500



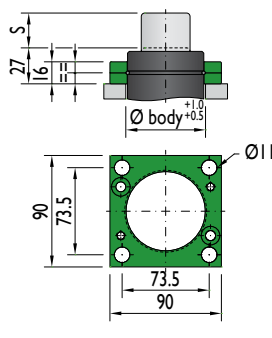
AR-1500



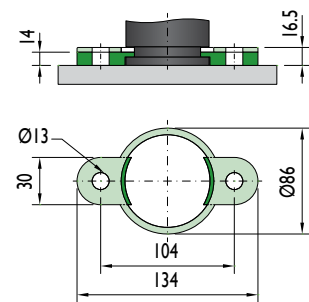
XS-1500



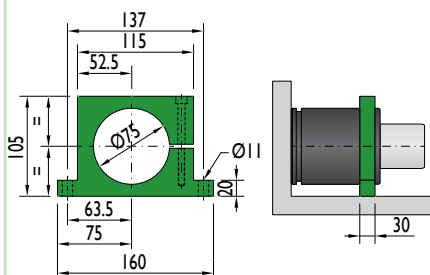
XC-1500



PR-1500

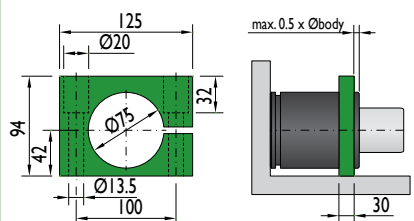


CS-1500



Flange must not support spring's force

CF-1500



Flange must not support spring's force