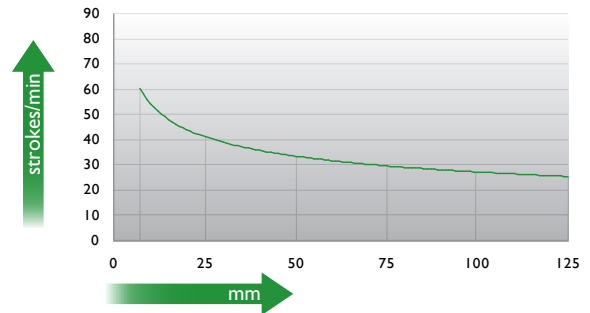


### Force / Pressure

		daN	bar (20°C)
V	GREEN	100	50
Z	BLUE	200	100
R	RED	250	125
A	YELLOW	300	150

\* maximum force if not specified

### Max. strokes / minutes



Ordering example: 4 x K-300-125 V

Order No.	S <sup>(1)</sup> mm	L mm	A mm	F <sub>0</sub> <sup>(2)</sup> daN (20°C, 150 bar)	F daN		kg
K-300-7	7	53	46	300	400	No	0.23
K-300-12	12	63	51		420	No	0.24
K-300-16	16	71	55		420	No	0.25
K-300-25	25	89	64		430	No	0.28
K-300-38	38	115	77		450	No	0.32
K-300-50	50	139	89		450	No	0.36
K-300-63	63	165	102		450	No	0.40
K-300-80	80	199	119		450	No	0.46
K-300-100	100	239	139		450	No	0.53
K-300-125	125	289	164		460	No	0.59

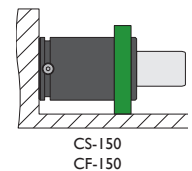
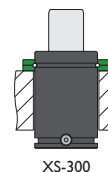
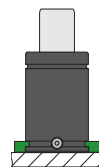
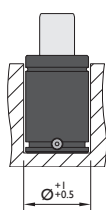
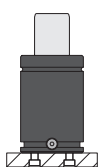
<sup>(1)</sup> other strokes under request

<sup>(2)</sup> alternative forces upon request



Pressure medium	N <sub>2</sub>	Working temperature	0-80°C	Min. security stroke	10%
Max. Charging pressure	150 bar	Temperature related force increase	+0.34%/°C	Repair Kit	KIT K-300
Min. Charging pressure	25 bar	Max. working speed	1.6 m/s	Linkable	No

### Mounting possibilities



Flange must not support spring's force

## Flanges

