

Ordering example: 4 x K-4000-125

Order No.	S ⁽¹⁾ mm	L mm	A mm	F ₀ ⁽²⁾ daN	F daN	(3)	kg
K-4000-25	25	120	95	4000 (20°C, 140 bar)	5800	No	3.76
K-4000-38	38	146	108		6200	No	4.21
K-4000-50	50	170	120		6300	No	4.50
K-4000-63	63	196	133		7100	Yes	4.82
K-4000-80	80	230	150		7100	Yes	5.26
K-4000-100	100	270	170		7200	Yes	5.63
K-4000-125	125	320	195		7200	Yes	6.05

other strokes ⁽¹⁾ under request

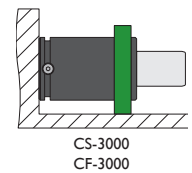
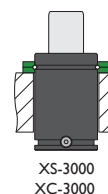
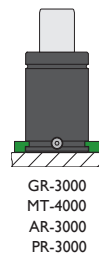
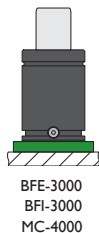
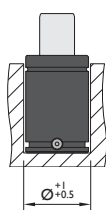
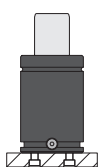
alternative forces ⁽²⁾ upon request

ESK available ⁽³⁾ for other strokes



Pressure medium	N ₂	Working temperature	0-80°C	Min. security stroke	10%
Max. Charging pressure	140 bar	Temperature related force increase	+0.34%/°C	Repair Kit	KIT K-4000
Min. Charging pressure	25 bar	Max. working speed	1.6 m/s	Linkable	G1/8"

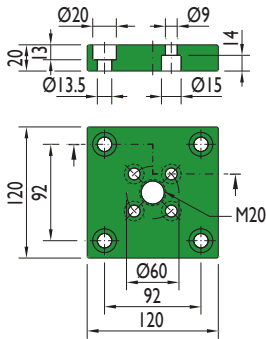
Mounting possibilities



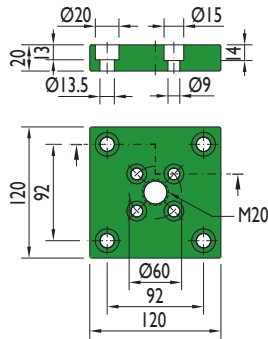
Flange must not support spring's force

Flanges

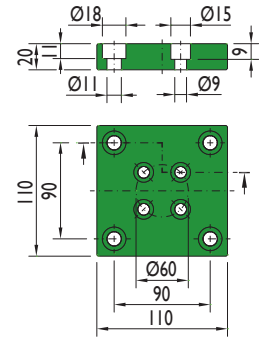
BFE-3000



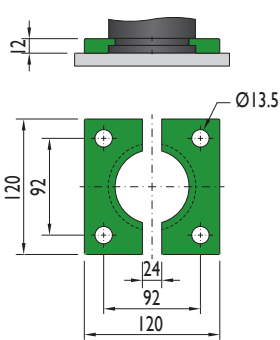
BFI-3000



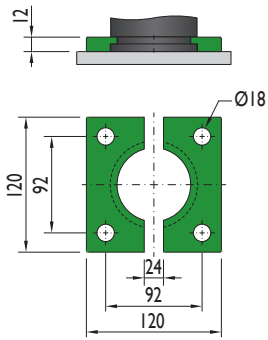
MC-4000



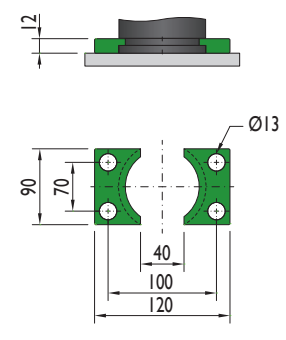
GR-3000



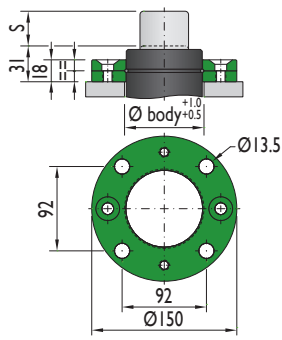
MT-4000



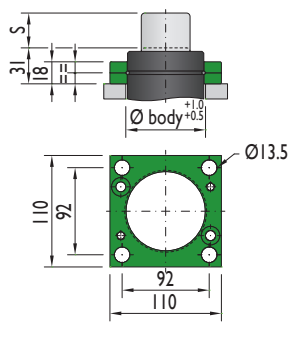
AR-3000



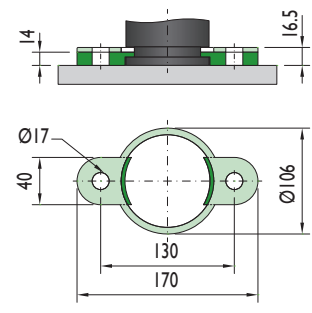
XS-3000



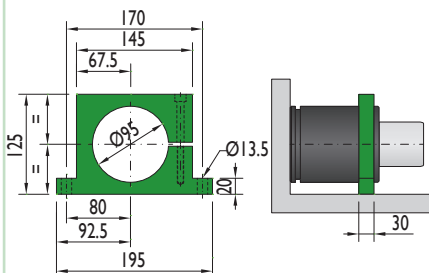
XC-3000



PR-3000

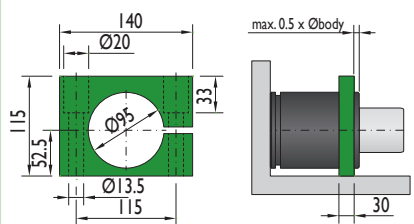


CS-3000



Flange must not support spring's force

CF-3000



Flange must not support spring's force