


Ordering example: 4 x K-750-125

Order No.	S ⁽¹⁾ mm	L mm	A mm	F ₀ ⁽²⁾ daN (20°C, 150 bar)	F daN	 ⁽³⁾	kg
K-750-12	12	74	62		1000	No	0.59
K-750-19	19	88	69		1100	No	0.69
K-750-25	25	100	75		1100	No	0.72
K-750-38	38	126	88		1200	No	0.80
K-750-50	50	150	100	740	1200	Yes	0.88
K-750-63	63	176	113		1200	Yes	0.90
K-750-80	80	210	130		1200	Yes	1.08
K-750-100	100	250	150		1200	Yes	1.23
K-750-125	125	300	175		1200	Yes	1.45

⁽¹⁾ other strokes under request

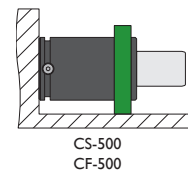
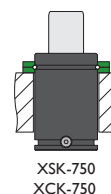
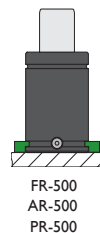
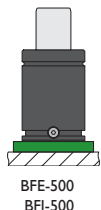
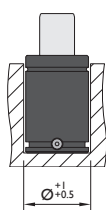
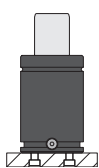
⁽²⁾ alternative forces upon request

⁽³⁾ ESK available for other strokes



Pressure medium	N ₂	Working temperature	0-80°C	Min. security stroke	10%
Max. Charging pressure	150 bar	Temperature related force increase	+0.34%/°C	Repair Kit	KIT K-750
Min. Charging pressure	25 bar	Max. working speed	1.6 m/s	Linkable	G1/8"

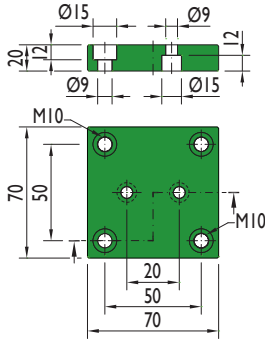
Mounting possibilities



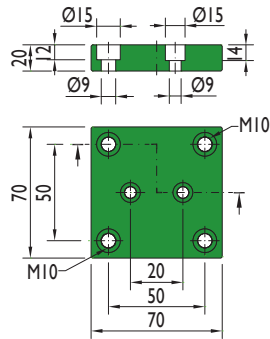
Flange must not support spring's force

Flanges

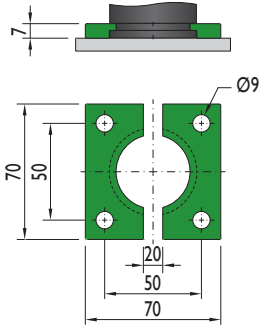
BFE-500



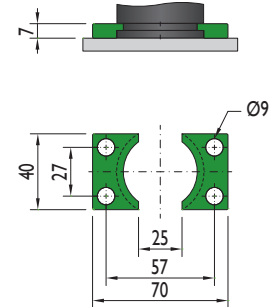
BFI-500



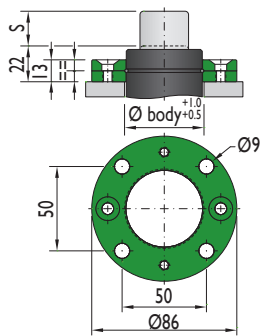
FR-500



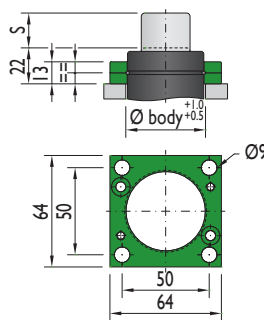
AR-500



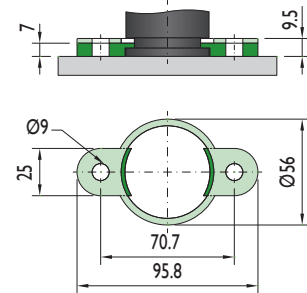
XSK-750



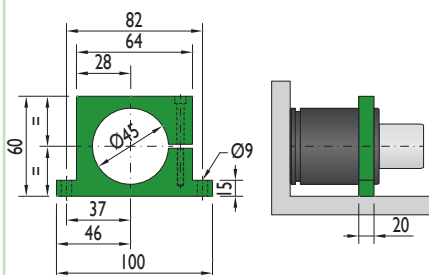
XCK-750



PR-500

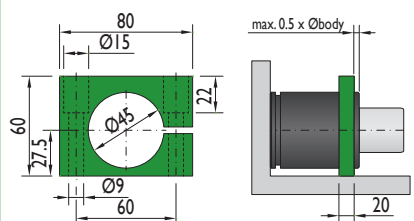


CS-500



Flange must not support spring's force

CF-500



Flange must not support spring's force

