

Ordering example: 4 x KC-300-125

Order No.	S ⁽¹⁾ mm	L mm	A mm	F ₀ ⁽²⁾ daN	F daN	kg
(20°C, 150 bar)						
KC-300-7	7	51	44	300	420	0.19
KC-300-12	12	61	49		440	0.21
KC-300-16	16	69	53		440	0.23
KC-300-25	25	87	62		440	0.25
KC-300-38	38	113	75		450	0.30
KC-300-50	50	137	87		450	0.33
KC-300-63	63	163	100		450	0.38
KC-300-80	80	197	117		450	0.44
KC-300-100	100	237	137		450	0.51
KC-300-125	125	287	162		460	0.58

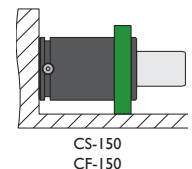
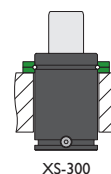
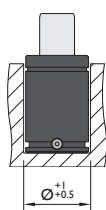
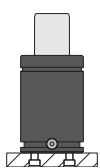
⁽¹⁾ other strokes under request

⁽²⁾ alternative forces upon request



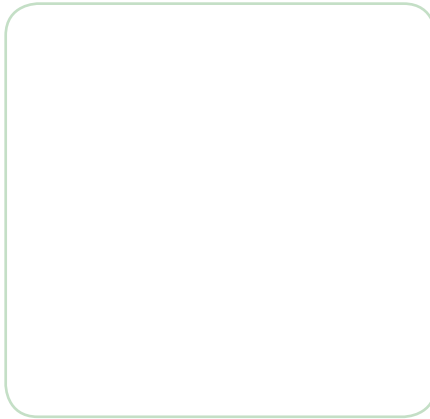
Pressure medium	N ₂	Working temperature	0-80°C	Min. security stroke	10%
Max. Charging pressure	150 bar	Temperature related force increase	+0.34%/°C	Repair Kit	KIT KC-300
Min. Charging pressure	25 bar	Max. working speed	1.6 m/s	Linkable	No

Mounting possibilities



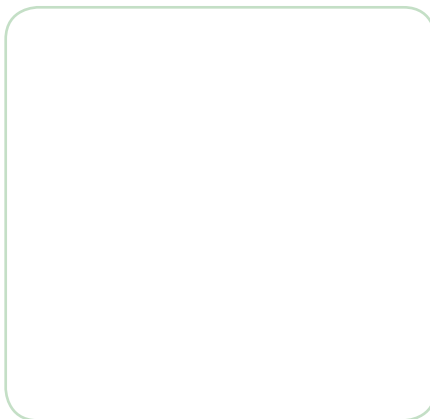
Flange must not support spring's force

Flanges



XS-300

Technical drawing of the XS-300 flange. The side view shows a height of 28.2 mm, a shoulder height of 9 mm, and a total height of S. The body diameter is labeled as $\text{Ø body} +0.5$. The top view shows an outer diameter of $\text{Ø}60$, an inner diameter of 35 mm, and a thickness of 40 mm. There are four mounting holes with a diameter of $\text{Ø}7$ and a spacing of 28 mm between them.



CS-150

Technical drawing of the CS-150 flange. The side view shows a total height of 45 mm, a shoulder height of 15 mm, and a body diameter of $\text{Ø}8.5$. The top view shows an outer diameter of 72 mm, an inner diameter of 32 mm ($\text{Ø}32$), and a thickness of 15 mm. The mounting holes are spaced 22 mm apart. The overall width is 90 mm, with a 31 mm offset from the center to the edge.

Flange must not support spring's force

CF-150

Technical drawing of the CF-150 flange. The side view shows a total height of 48 mm, a shoulder height of 10 mm, and a body diameter of $\text{max. } 0.5 \times \text{Øbody}$. The top view shows an outer diameter of 68 mm, an inner diameter of 15 mm ($\text{Ø}15$), and a thickness of 10 mm. The mounting holes are spaced 9 mm apart ($\text{Ø}9$). The overall width is 50 mm, with a 20.9 mm offset from the center to the edge.

Flange must not support spring's force

VDI

