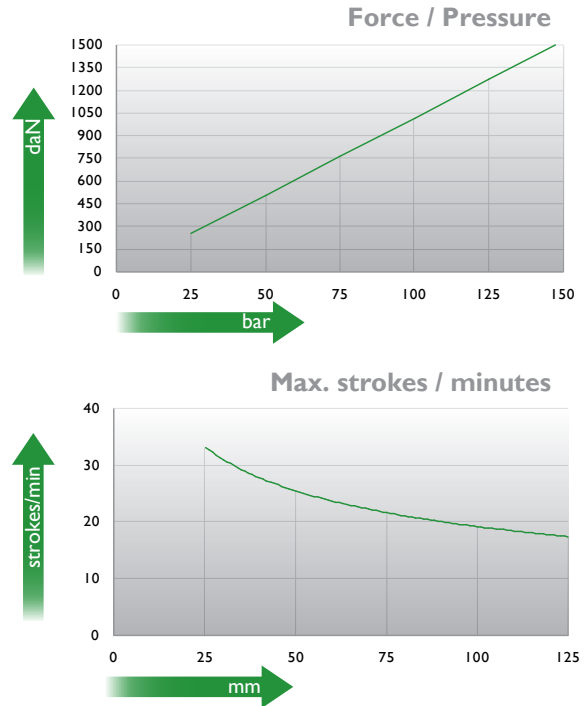
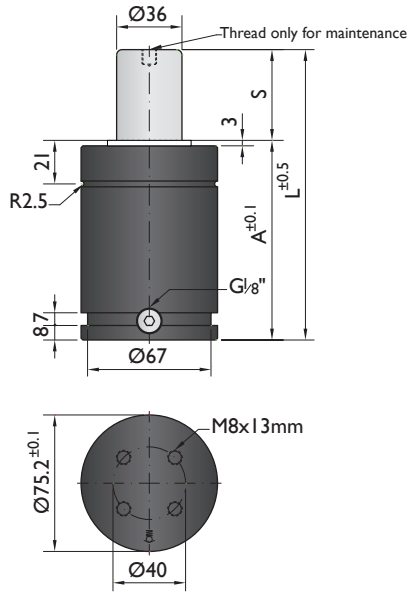




CNOMO
EM24.54.700



Ordering example: 4 x KH-1500-125

Order No.	S ⁽¹⁾ mm	L mm	A mm	F ₀ ⁽²⁾ daN	F daN	(3)	kg
KH-1500-25	25	110	85	1500 (20°C, 150 bar)	2100	No	2.08
KH-1500-38	38.1	136.2	98.1		2200	No	2.33
KH-1500-50	50	160	110		2300	Yes	2.50
KH-1500-63	63.5	187	123.5		2300	Yes	2.73
KH-1500-80	80	220	140		2300	Yes	3.04
KH-1500-100	100	260	160		2300	Yes	3.60
KH-1500-125	125	310	185		2300	Yes	4.75

other strokes ⁽¹⁾ under request

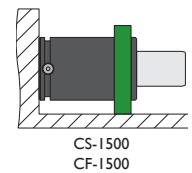
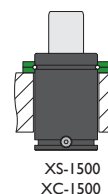
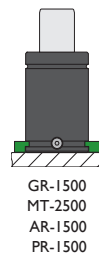
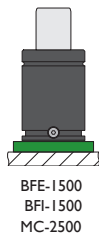
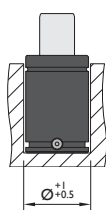
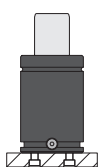
alternative forces ⁽²⁾ upon request

ESK available ⁽³⁾ for other strokes



Pressure medium	N ₂	Working temperature	0-80°C	Min. security stroke	10%
Max. Charging pressure	150 bar	Temperature related force increase	+0.34%/°C	Repair Kit	KIT KH-1500
Min. Charging pressure	25 bar	Max. working speed	1.6 m/s	Linkable	G1/8"

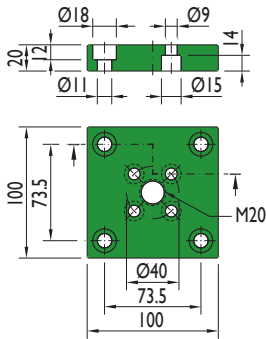
Mounting possibilities



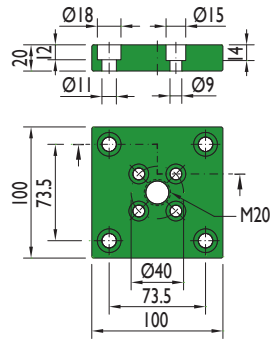
Flange must not support spring's force

Flanges

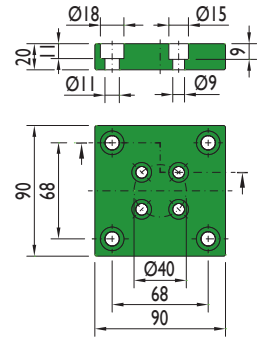
BFE-I 500



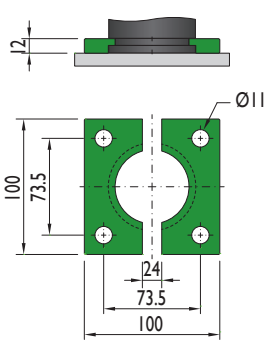
BFI-I 500



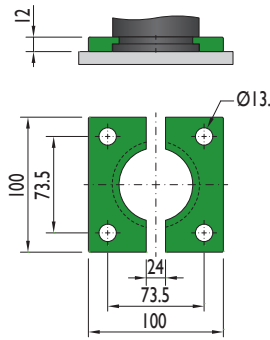
MC-2500



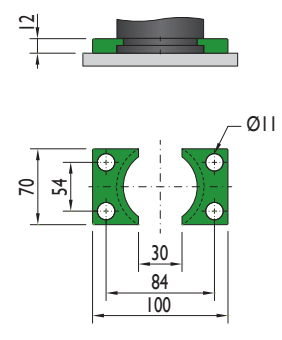
GR-I 500



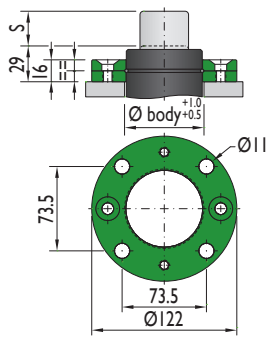
MT-2500



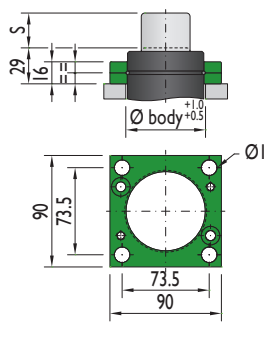
AR-I 500



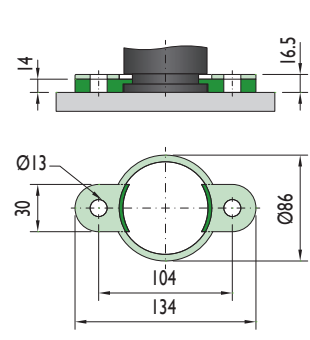
XS-I 500



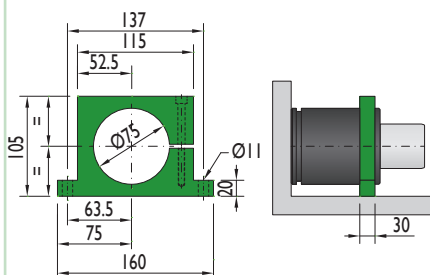
XC-I 500



PR-I 500

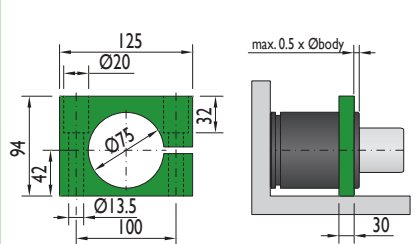


CS-I 500



Flange must not support spring's force

CF-I 500



Flange must not support spring's force