

Ordering example: 4 x KH-500-125

Order No.	S ⁽¹⁾ mm	L mm	A mm	F ₀ ⁽²⁾ daN	F daN	kg
KH-500-13	12.7	75.4	62.7		600	0.55
KH-500-19	19	88	69		610	0.59
KH-500-25	25	100	75		620	0.63
KH-500-38	38.1	126.2	88.1		620	0.71
KH-500-50	50	150	100	470	630	0.80
KH-500-63	63.5	177	113.5		640	0.87
KH-500-80	80	210	130		660	0.97
KH-500-100	100	250	150		660	1.11
KH-500-125	125	300	175		660	1.25

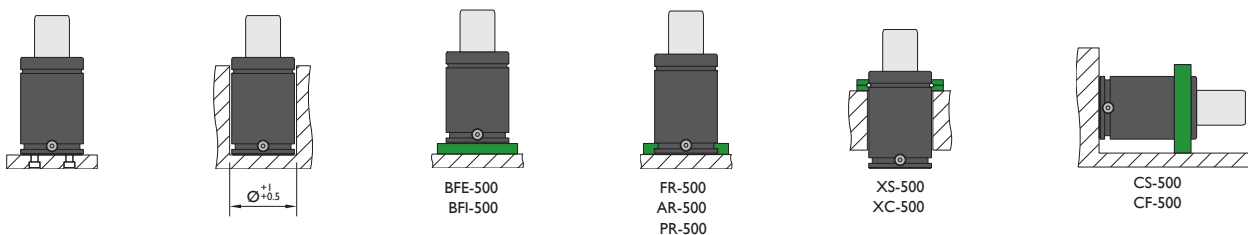
⁽¹⁾ other strokes under request

⁽²⁾ alternative forces upon request



Pressure medium	N ₂	Working temperature	0-80°C	Min. security stroke	10%
Max. Charging pressure	150 bar	Temperature related force increase	+0.34%/°C	Repair Kit	KIT KH-500
Min. Charging pressure	25 bar	Max. working speed	1.6 m/s	Linkable	G1/8"

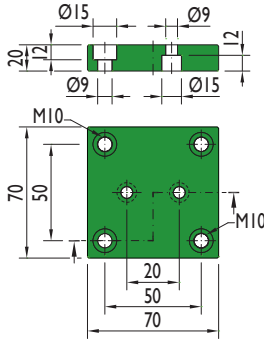
Mounting possibilities



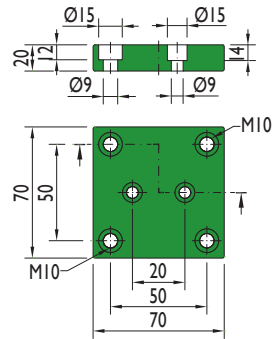
Flange must not support spring's force

Flanges

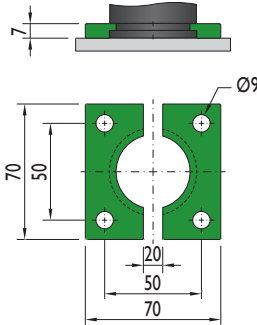
BFE-500



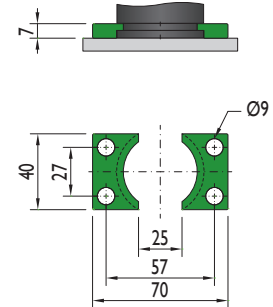
BFI-500



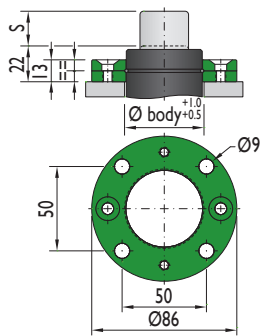
FR-500



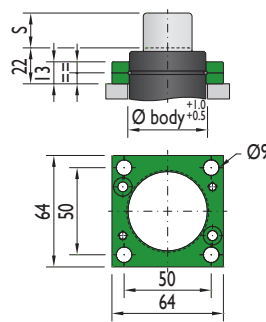
AR-500



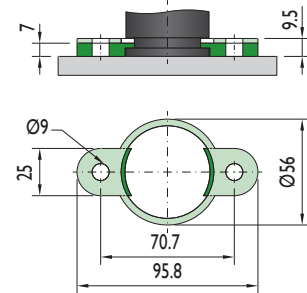
XS-500



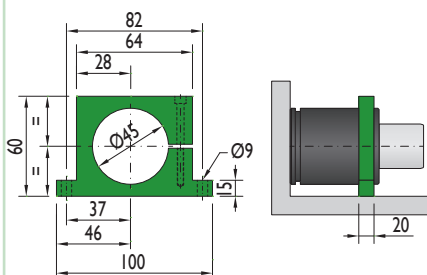
XC-500



PR-500

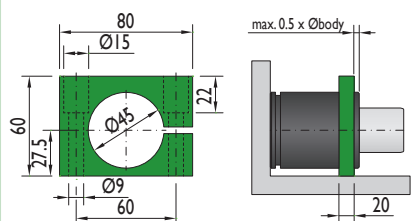


CS-500



Flange must not support spring's force

CF-500



Flange must not support spring's force