

Ordering example: 4 x KP-1000-125

Order No.	S <sup>(1)</sup> mm	L mm	A mm	F <sub>0</sub> <sup>(2)</sup> daN	F daN	kg
KP-1000-13	13	64	51	920	1400	0.57
KP-1000-16	16	70	54		1400	0.59
KP-1000-19	19	76	57		1400	0.62
KP-1000-25	25	88	63		1400	0.67
KP-1000-32	32	102	70		1400	0.73
KP-1000-38	38	114	76		1400	0.78
KP-1000-50	50	138	88		1400	0.88
KP-1000-63	63	164	101		1400	0.99
KP-1000-75	75	188	113		1400	1.09
KP-1000-80	80	198	118		1400	1.13
KP-1000-100	100	238	138		1400	1.30
KP-1000-125	125	288	163		1400	1.51

<sup>(1)</sup> other strokes under request

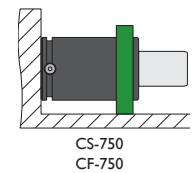
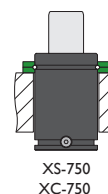
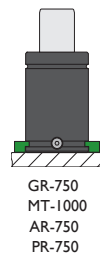
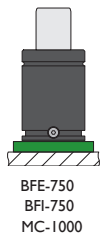
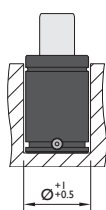
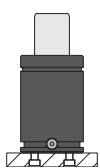
<sup>(2)</sup> alternative forces upon request

<sup>(3)</sup> ESK available for other strokes



Pressure medium	N <sub>2</sub>	Working temperature	0-80°C	Min. security stroke	10%
Max. Charging pressure	150 bar	Temperature related force increase	+0.34%/°C	Repair Kit	KIT KP-1000
Min. Charging pressure	25 bar	Max. working speed	1.6 m/s	Linkable	M6

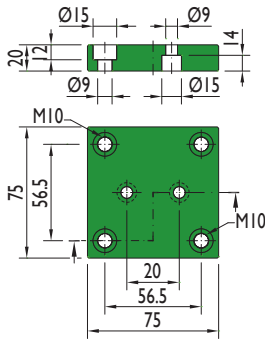
## Mounting possibilities



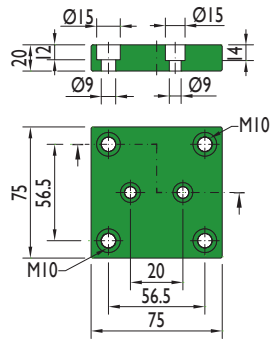
Flange must not support spring's force

## Flanges

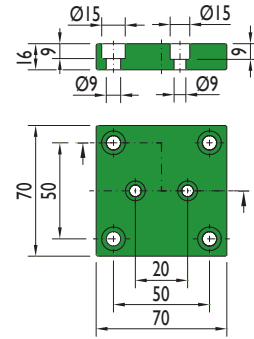
### BFE-750



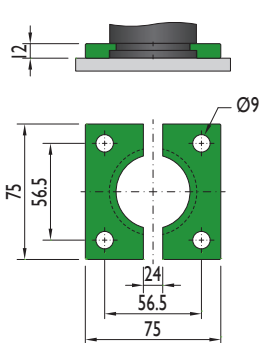
### BFI-750



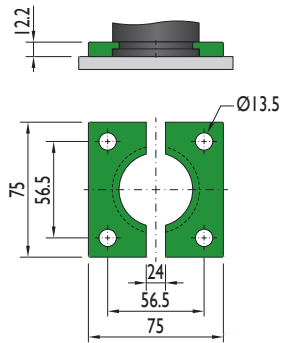
### MC-1000



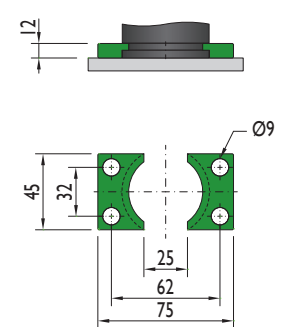
### GR-750



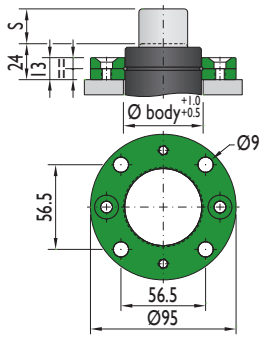
### MT-1000



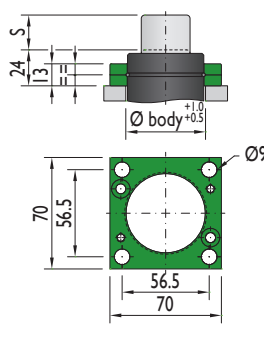
### AR-750



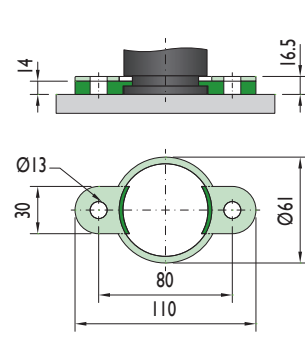
### XS-750



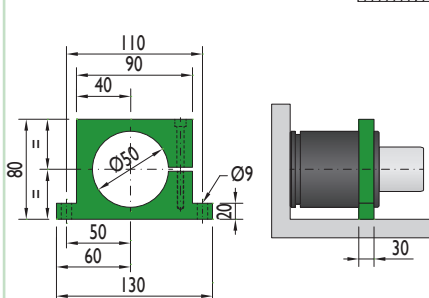
### XC-750



### PR-750



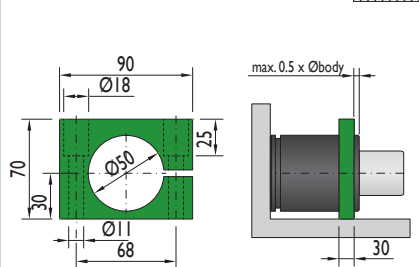
### CS-750



Flange must not support spring's force



### CF-750



Flange must not support spring's force

