

Ordering example: 4 x KP-150-125

Order No.	S ⁽¹⁾ mm	L mm	A mm	F ₀ ⁽²⁾ daN	F daN	kg
(20°C, 160 bar)						
KP-150-7	7	44	37	150	240	0.05
KP-150-10	10	50	40		250	0.07
KP-150-15	15	60	45		280	0.07
KP-150-19	19	68	49		280	0.07
KP-150-25	25	80	55		280	0.09
KP-150-38	38	106	68		280	0.10
KP-150-50	50	130	80		280	0.12
KP-150-63	63	156	93		280	0.14
KP-150-75	75	185	110		280	0.15
KP-150-80	80	195	115		280	0.17
KP-150-100	100	235	135		280	0.20
KP-150-125	125	285	160		280	0.23

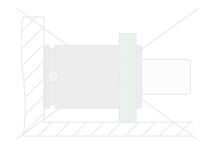
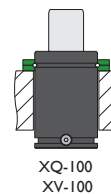
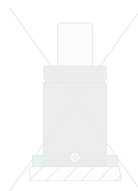
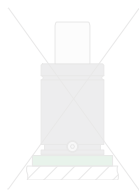
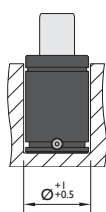
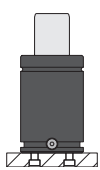
⁽¹⁾ other strokes under request

⁽²⁾ alternative forces upon request

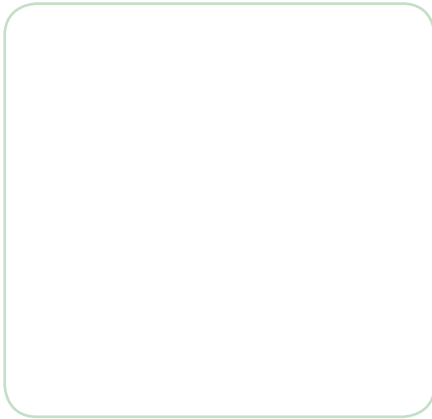


Pressure medium	N ₂	Working temperature	0-80°C	Min. security stroke	10%
Max. Charging pressure	160 bar	Temperature related force increase	+0.34%/°C	Repair Kit	Non-repairable
Min. Charging pressure	25 bar	Max. working speed	1.6 m/s	Linkable	No

Mounting possibilities



Flanges



XQ-100

ISO

XV-100

VDI

