

Ordering example: 4 x KP-15000-125

Order No.	S ⁽¹⁾ mm	L mm	A mm	F ₀ ⁽²⁾ daN (20°C, 110 bar)	F daN	⁽³⁾	kg
KP-15000-19	19	148	129	14600	20700	No	22.63
KP-15000-25	25	160	135		21600	No	23.16
KP-15000-32	32	174	142		22500	No	23.76
KP-15000-38	38	186	148		23100	No	25.66
KP-15000-50	50	210	160		24000	No	27.31
KP-15000-63	63	236	173		28700	No	28.02
KP-15000-75	75	260	185		28700	No	29.53
KP-15000-80	80	270	190		28700	No	31.45
KP-15000-100	100	310	210		28700	No	32.70
KP-15000-125	125	360	235		28700	No	35.30

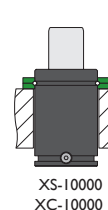
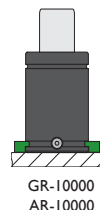
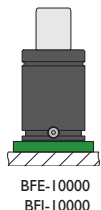
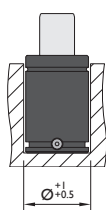
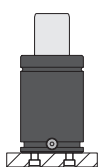
⁽¹⁾ other strokes under request

⁽²⁾ alternative forces upon request



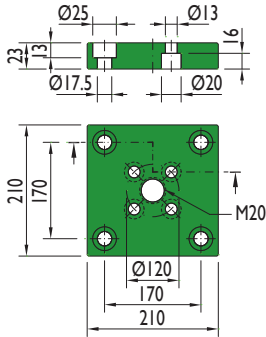
Pressure medium	N ₂	Working temperature	0-80°C	Min. security stroke	10%
Max. Charging pressure	110 bar	Temperature related force increase	+0.34%/°C	Repair Kit	KIT KP-15000
Min. Charging pressure	25 bar	Max. working speed	1.6 m/s	Linkable	G1/8"

Mounting possibilities

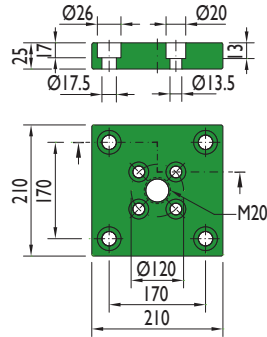


Flanges

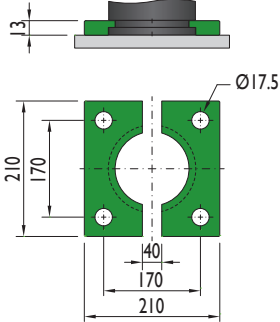
BFE-10000



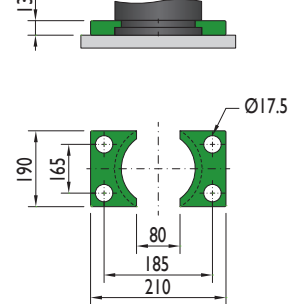
BFI-10000



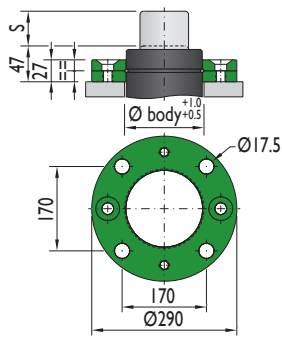
GR-10000



AR-10000



XS-10000



XC-10000

