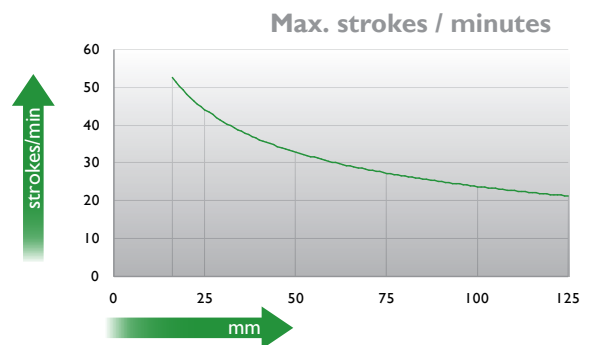
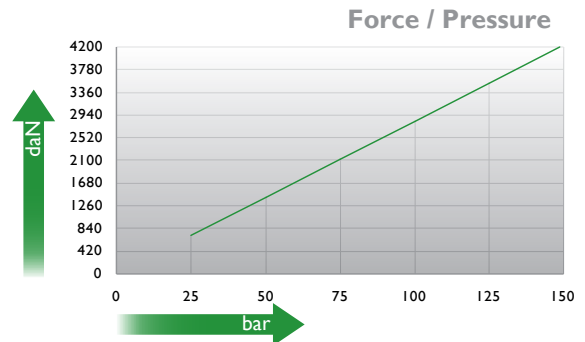
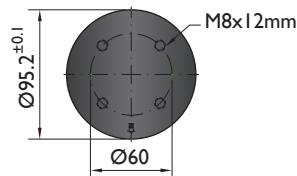
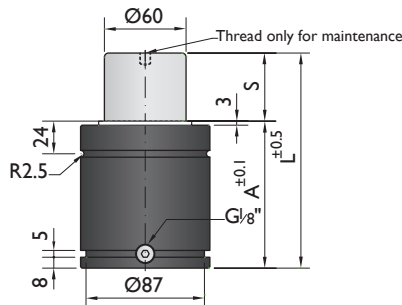
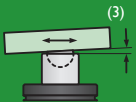




PSA
E24.54.815.G



Ordering example: 4 x KP-4200-125

Order No.	S ⁽¹⁾ mm	L mm	A mm	F ₀ ⁽²⁾ daN (20°C, 150 bar)	F daN	 ⁽³⁾	kg
KP-4200-16	16	90	74	4200	6500	No	2.82
KP-4200-19	19	96	77		6700	No	2.90
KP-4200-25	25	108	83		6900	No	3.05
KP-4200-32	32	122	90		7000	No	3.23
KP-4200-38	38	134	96		7100	No	3.38
KP-4200-50	50	158	108		7500	No	3.69
KP-4200-63	63	184	121		7600	Yes	4.02
KP-4200-75	75	208	133		7700	Yes	4.32
KP-4200-80	80	218	138		7800	Yes	4.45
KP-4200-100	100	258	158		7900	Yes	4.96
KP-4200-125	125	308	183		8000	Yes	5.60

⁽¹⁾ other strokes under request

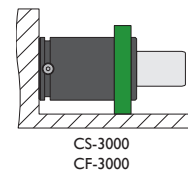
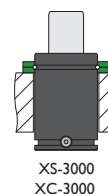
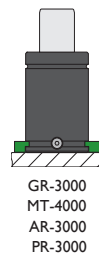
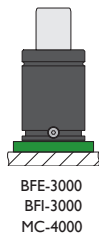
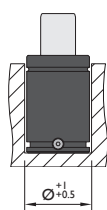
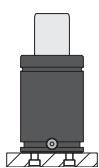
⁽²⁾ alternative forces upon request

⁽³⁾ ESK available for other strokes



Pressure medium	N ₂	Working temperature	0-80°C	Min. security stroke	10%
Max. Charging pressure	150 bar	Temperature related force increase	+0.34%/°C	Repair Kit	KIT KP-4200
Min. Charging pressure	25 bar	Max. working speed	1.6 m/s	Linkable	G1/8"

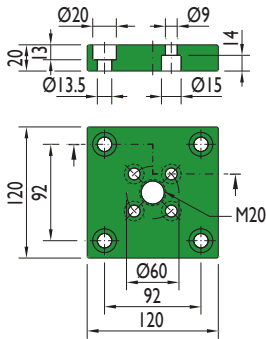
Mounting possibilities



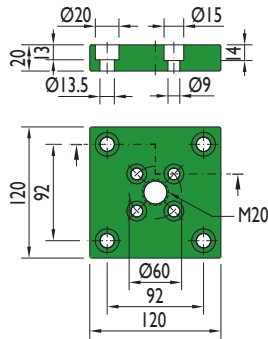
Flange must not support spring's force

Flanges

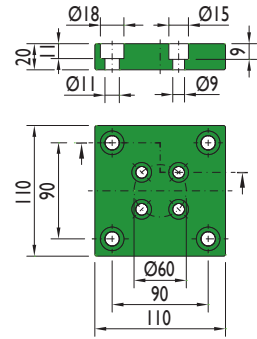
BFE-3000



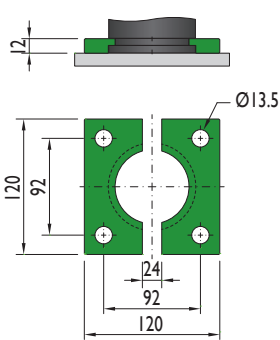
BFI-3000



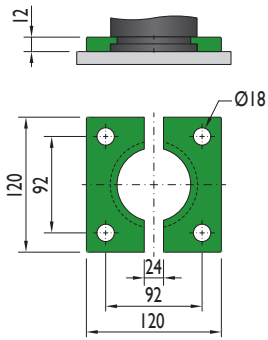
MC-4000



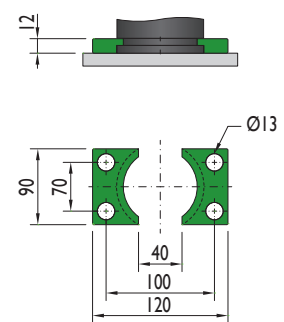
GR-3000



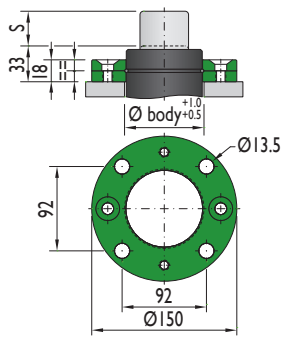
MT-4000



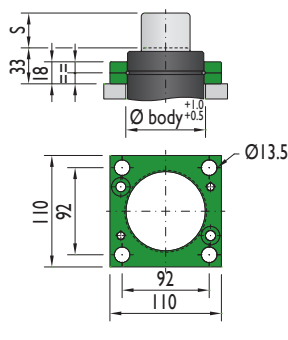
AR-3000



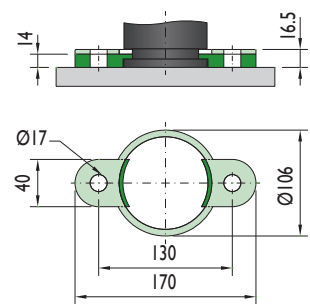
XS-3000



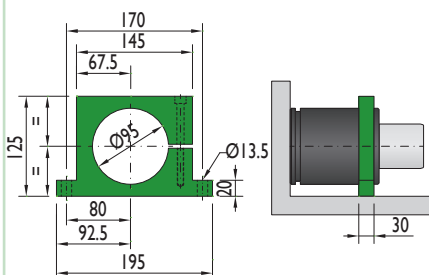
XC-3000



PR-3000

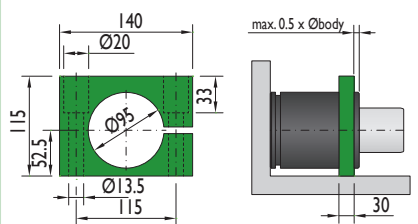


CS-3000



Flange must not support spring's force

CF-3000



Flange must not support spring's force