


Ordering example: 4 x KP-750-125

Order No.	S ⁽¹⁾ mm	L mm	A mm	F ₀ ⁽²⁾ daN (20°C, 150 bar)	F daN		kg
KP-750-10	10	52	42	740	1000	No	0.33
KP-750-13	13	58	45		1000	No	0.41
KP-750-16	16	64	48		1000	No	0.42
KP-750-19	19	70	51		1100	No	0.44
KP-750-25	25	82	57		1100	No	0.45
KP-750-32	32	96	64		1100	No	0.50
KP-750-38	38	108	70		1100	No	0.58
KP-750-50	50	132	82		1100	Yes	0.67
KP-750-63	63	158	95		1100	Yes	0.75
KP-750-75	75	182	107		1100	Yes	0.84
KP-750-80	80	192	112	1100	Yes	0.87	
KP-750-100	100	232	132	1100	Yes	1.01	
KP-750-125	125	282	157	1100	Yes	1.18	

other strokes ⁽¹⁾ under request

alternative forces ⁽²⁾ upon request

ESK available for other strokes ⁽³⁾

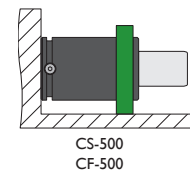
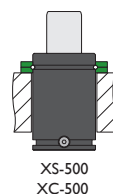
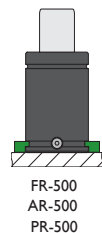
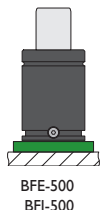
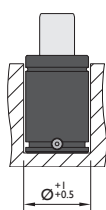
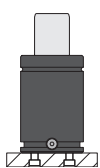


Pressure medium N₂
Max. Charging pressure 150 bar
Min. Charging pressure 25 bar

Working temperature 0-80°C
Temperature related force increase +0.34%/°C
Max. working speed 1.6 m/s

Min. security stroke 10%
Repair Kit KIT KP-750
Linkable M6

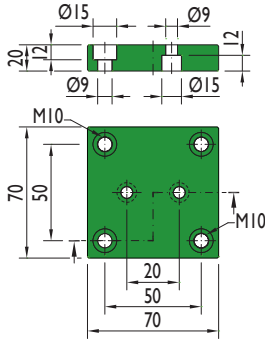
Mounting possibilities



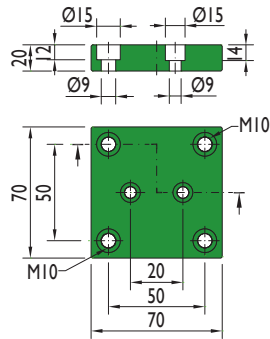
Flange must not support spring's force

Flanges

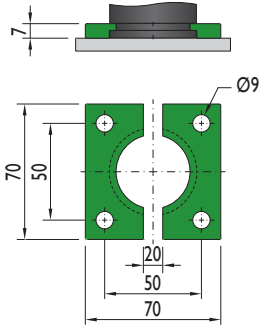
BFE-500



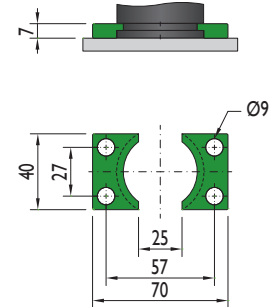
BFI-500



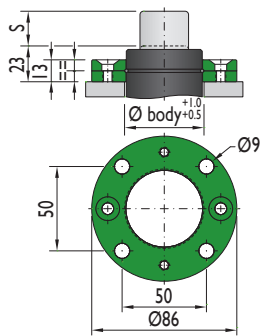
FR-500



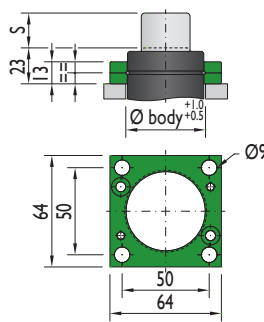
AR-500



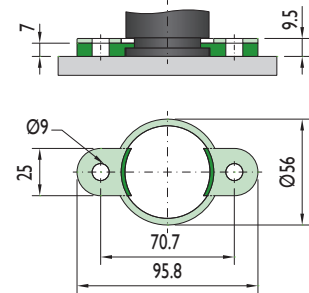
XS-500



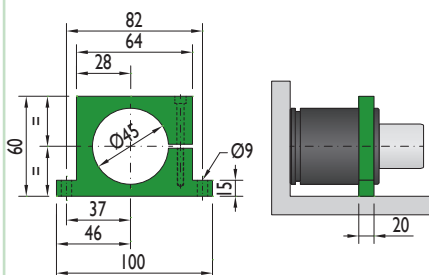
XC-500



PR-500

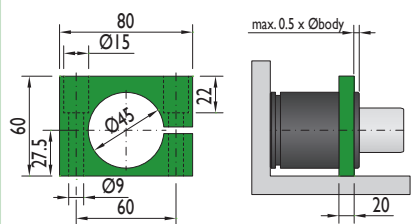


CS-500



Flange must not support spring's force

CF-500



Flange must not support spring's force

