


Ordering example: 4 x KP-9500-125

Order No.	S ⁽¹⁾ mm	L mm	A mm	F ₀ ⁽²⁾ daN (20°C, 150 bar)	F daN		kg
KP-9500-19	19	116	97	9500	12800	No	9.90
KP-9500-25	25	128	103		13200	No	10.25
KP-9500-32	32	142	110		13600	No	11.03
KP-9500-38	38	154	116		13800	No	12.16
KP-9500-50	50	178	128		14200	No	13.77
KP-9500-63	63	204	141		17400	Yes	14.73
KP-9500-75	75	228	153		17300	Yes	15.63
KP-9500-80	80	238	158		17300	Yes	15.97
KP-9500-100	100	278	178		17200	Yes	16.53
KP-9500-125	125	328	203		17100	Yes	17.15

⁽¹⁾ other strokes under request

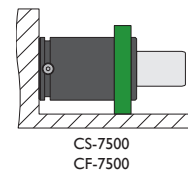
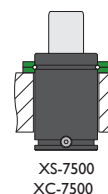
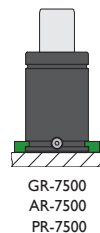
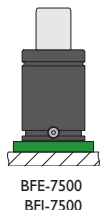
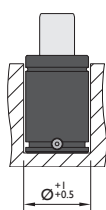
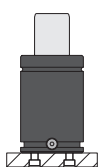
⁽²⁾ alternative forces upon request

⁽³⁾ ESK available for other strokes



Pressure medium	N ₂	Working temperature	0-80°C	Min. security stroke	10%
Max. Charging pressure	150 bar	Temperature related force increase	+0.34%/°C	Repair Kit	KIT KP-9500
Min. Charging pressure	25 bar	Max. working speed	1.6 m/s	Linkable	G1/8"

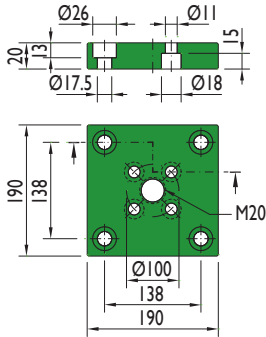
Mounting possibilities



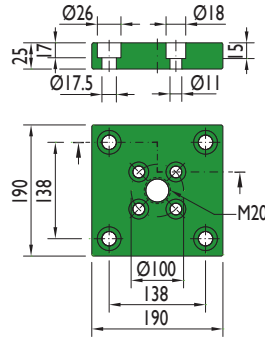
Flange must not support spring's force

Flanges

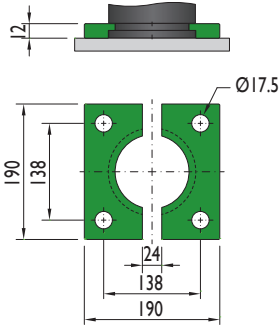
BFE-7500



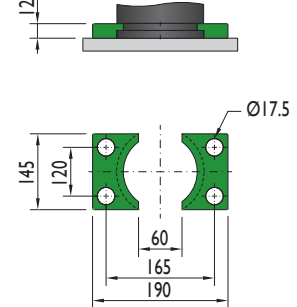
BFI-7500



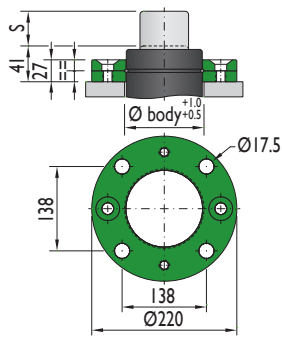
GR-7500



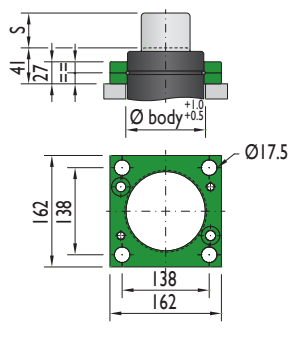
AR-7500



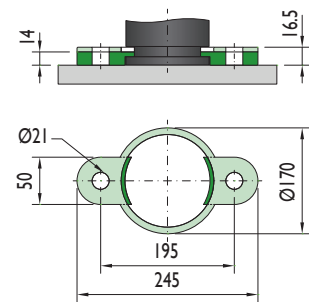
XS-7500



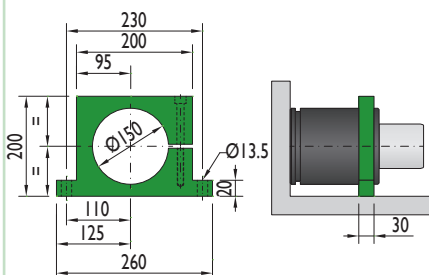
XC-7500



PR-7500



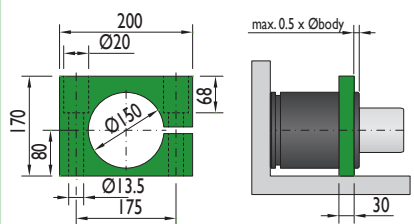
CS-7500



Flange must not support spring's force



CF-7500



Flange must not support spring's force

