


Ordering example: 4 x NR-2400-50

| Order No. | S ⁽¹⁾ mm | L mm | A mm | F ₀ ⁽²⁾ daN (20°C, 150 bar) | F daN |  | kg |
|-------------|------------------------|---------|---------|---|----------|---|------|
| NR-2400-16 | 16 | 91 | 75 | 2400 | 3700 | No | 2.01 |
| NR-2400-19 | 19 | 97 | 78 | | 3800 | No | 2.06 |
| NR-2400-25 | 25 | 109 | 84 | | 3900 | No | 2.17 |
| NR-2400-32 | 32 | 123 | 91 | | 4000 | No | 2.30 |
| NR-2400-38 | 38 | 135 | 97 | | 4000 | No | 2.41 |
| NR-2400-50 | 50 | 159 | 109 | | 4300 | Yes | 2.63 |
| NR-2400-63 | 63 | 185 | 122 | | 4300 | Yes | 2.86 |
| NR-2400-75 | 75 | 209 | 134 | | 4100 | Yes | 3.09 |
| NR-2400-80 | 80 | 219 | 139 | | 4100 | Yes | 3.15 |
| NR-2400-100 | 100 | 259 | 159 | | 4100 | Yes | 3.54 |
| NR-2400-125 | 125 | 309 | 184 | | 4100 | Yes | 4.05 |

⁽¹⁾ other strokes under request

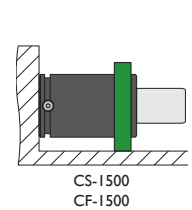
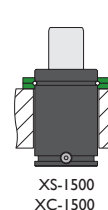
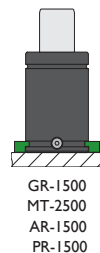
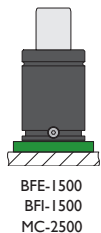
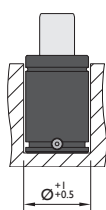
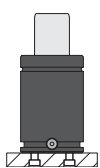
⁽²⁾ alternative forces upon request

⁽³⁾ ESK available for other strokes



| | | | | | |
|------------------------|----------------|------------------------------------|-----------|----------------------|-------------|
| Pressure medium | N ₂ | Working temperature | 0-80°C | Min. security stroke | 10% |
| Max. Charging pressure | 150 bar | Temperature related force increase | +0.34%/°C | Repair Kit | KIT NR-2400 |
| Min. Charging pressure | 25 bar | Max. working speed | 1.6 m/s | Linkable | G1/8" |

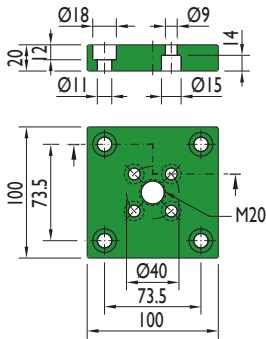
Mounting possibilities



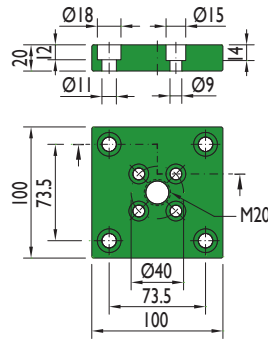
Flange must not support spring's force

Flanges

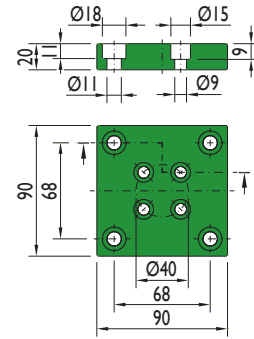
BFE-1500



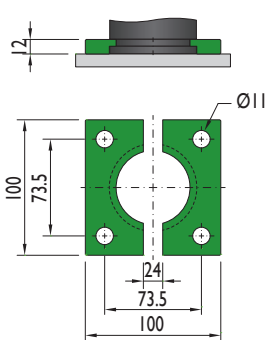
BFI-1500



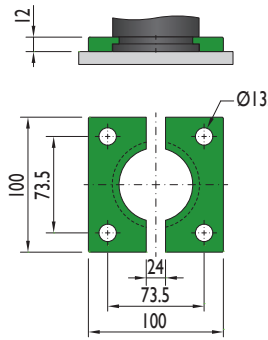
MC-2500



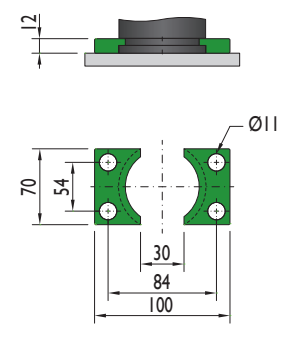
GR-1500



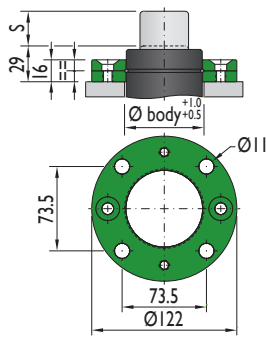
MT-2500



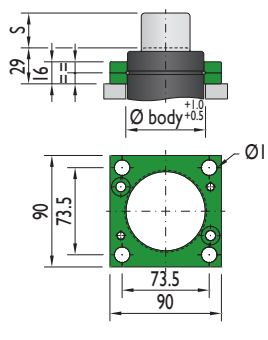
AR-1500



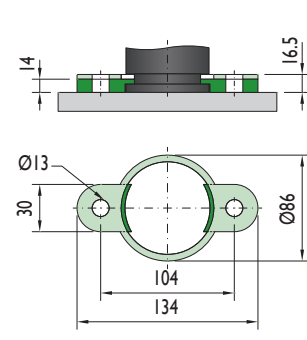
XS-1500



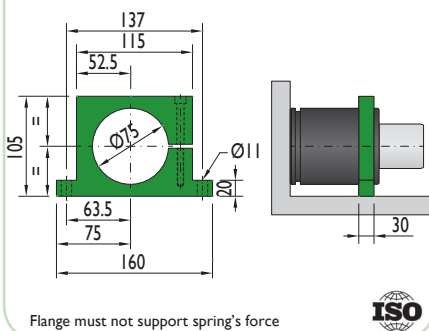
XC-1500



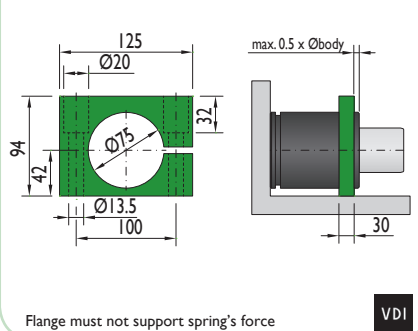
PR-1500



CS-1500



CF-1500



Flange must not support spring's force

Flange must not support spring's force