


Ordering example: 4 x NR-4200-125

Order No.	S ⁽¹⁾ mm	L mm	A mm	F ₀ ⁽²⁾ daN (20°C, 150 bar)	F daN	 ⁽³⁾	kg
NR-4200-16	16	94	78	4200	6100	No	2.60
NR-4200-19	19	100	81		6300	No	2.75
NR-4200-25	25	112	87		6300	No	2.95
NR-4200-32	32	126	94		6400	No	3.17
NR-4200-38	38	138	100		6500	No	3.32
NR-4200-50	50	162	112		7700	No	3.76
NR-4200-63	63	188	125		7600	Yes	4.12
NR-4200-75	75	212	137		7600	Yes	4.50
NR-4200-80	80	222	142		7600	Yes	4.67
NR-4200-100	100	262	162		7500	Yes	5.30
NR-4200-125	125	312	187		7500	Yes	6.10

⁽¹⁾ other strokes under request

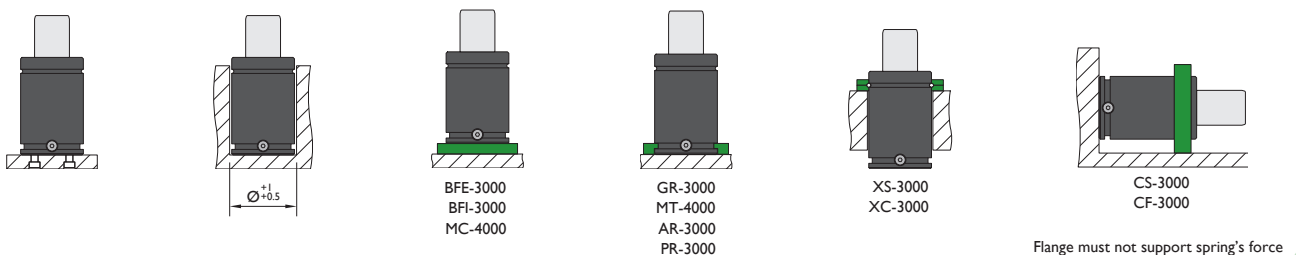
⁽²⁾ alternative forces upon request

⁽³⁾ ESK available for other strokes



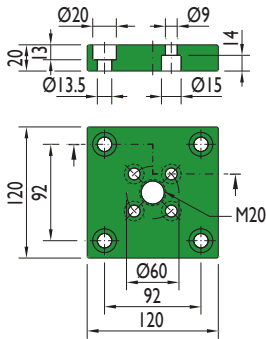
Pressure medium	N ₂	Working temperature	0-80°C	Min. security stroke	10%
Max. Charging pressure	150 bar	Temperature related force increase	+0.34%/°C	Repair Kit	KIT NR-4200
Min. Charging pressure	25 bar	Max. working speed	1.6 m/s	Linkable	G1/8"

Mounting possibilities

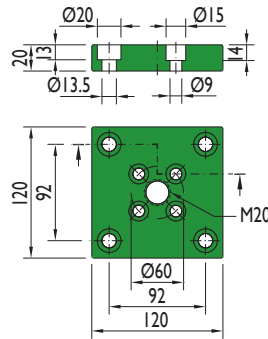


Flanges

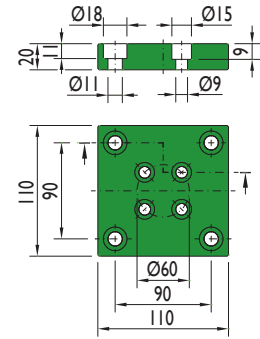
BFE-3000



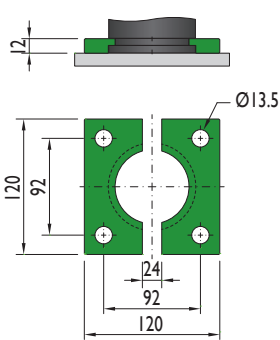
BFI-3000



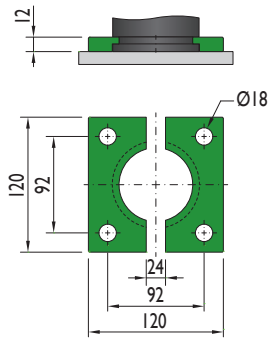
MC-4000



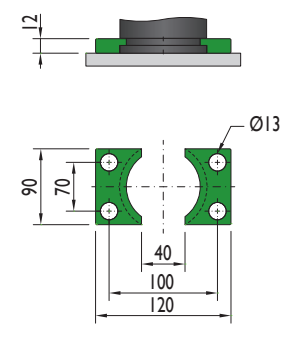
GR-3000



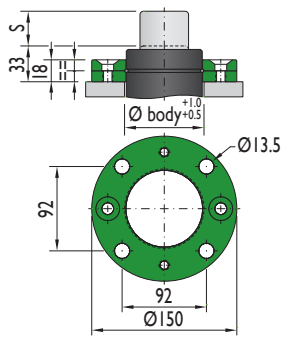
MT-4000



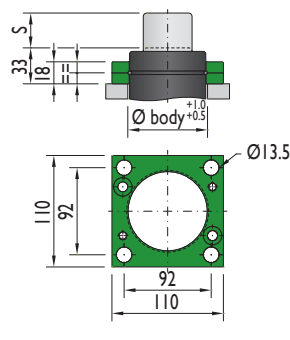
AR-3000



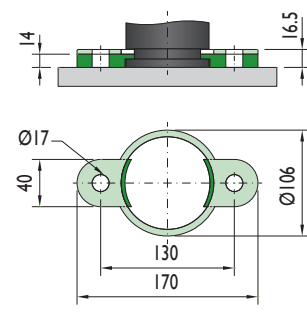
XS-3000



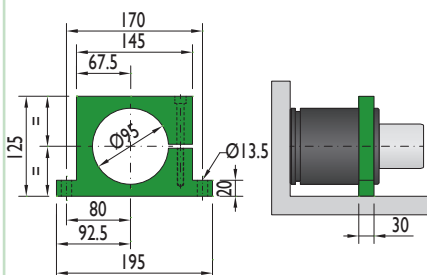
XC-3000



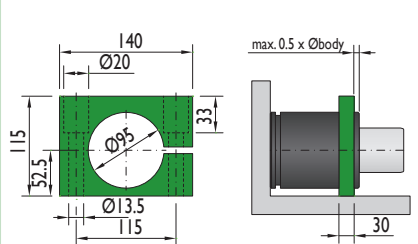
PR-3000



CS-3000



CF-3000



Flange must not support spring's force



Flange must not support spring's force

