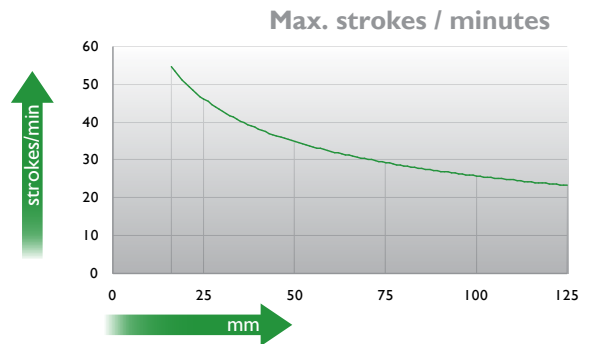
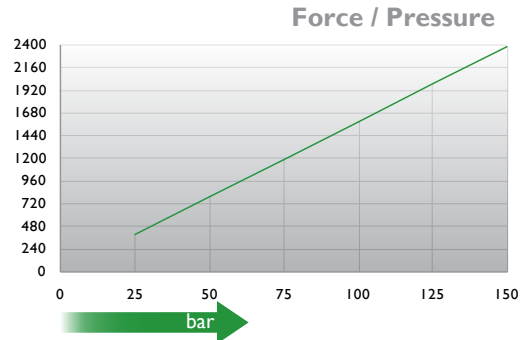
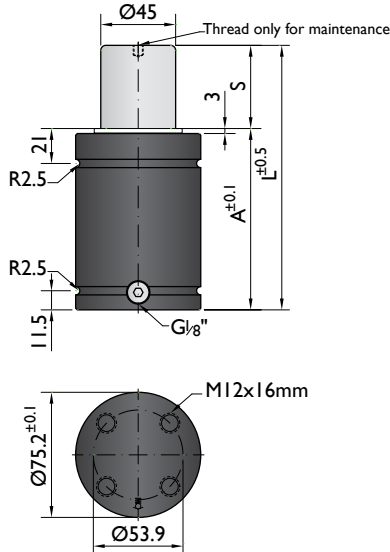


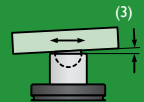


PSA
E24.54.815.G

SMS DNH
3203N



Ordering example: 4 x NT-2400-50

Order No.	S ⁽¹⁾ mm	L mm	A mm	F ₀ ⁽²⁾ daN (20°C, 150 bar)	F daN	 ⁽³⁾	kg
NT-2400-16	16	91	75	2400	3700	No	2.01
NT-2400-19	19	97	78		3800	No	2.06
NT-2400-25	25	109	84		3900	No	2.17
NT-2400-32	32	123	91		4000	No	2.30
NT-2400-38	38	135	97		4000	No	2.41
NT-2400-50	50	159	109		4300	Yes	2.63
NT-2400-63	63	185	122		4300	Yes	2.86
NT-2400-75	75	209	134		4100	Yes	3.09
NT-2400-80	80	219	139		4100	Yes	3.15
NT-2400-100	100	259	159		4100	Yes	3.54
NT-2400-125	125	309	184		4100	Yes	4.05

⁽¹⁾ other strokes under request

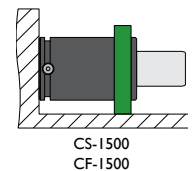
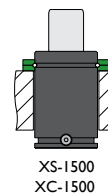
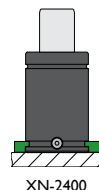
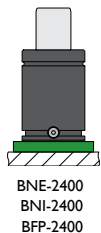
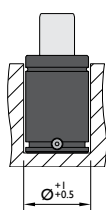
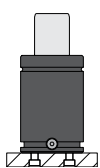
⁽²⁾ alternative forces upon request

⁽³⁾ ESK available for other strokes



Pressure medium	N ₂	Working temperature	0-80°C	Min. security stroke	10%
Max. Charging pressure	150 bar	Temperature related force increase	+0.34%/°C	Repair Kit	KIT NT-2400
Min. Charging pressure	25 bar	Max. working speed	1.6 m/s	Linkable	G1/8"

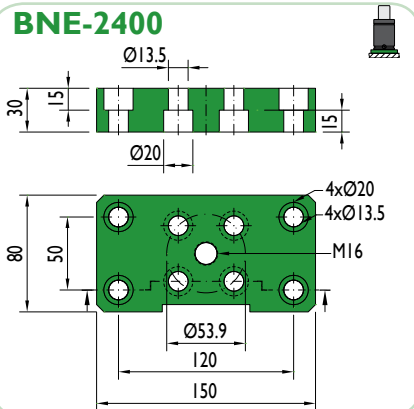
Mounting possibilities



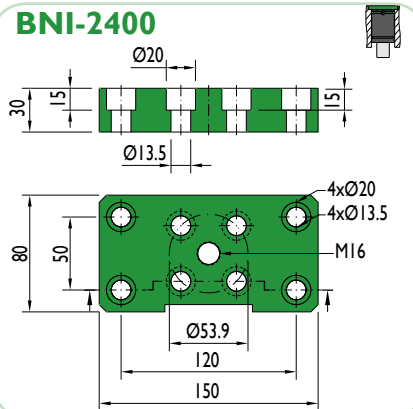
Flange must not support spring's force

Flanges

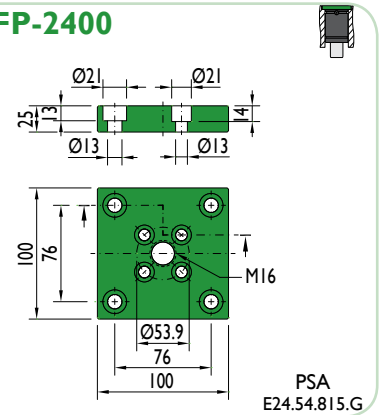
BNE-2400



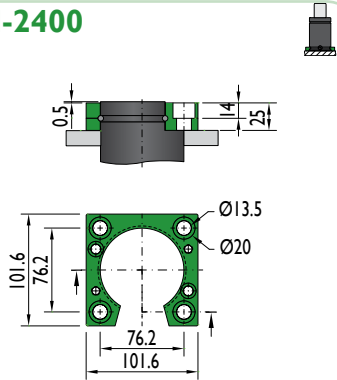
BNI-2400



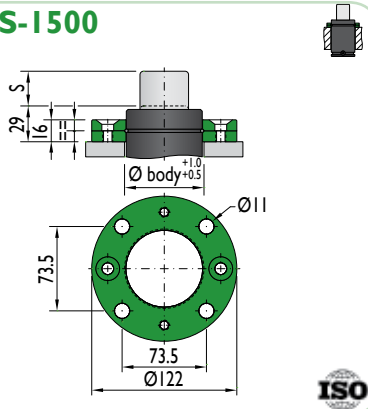
BFP-2400



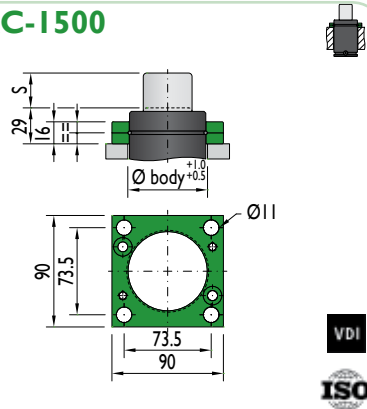
XN-2400



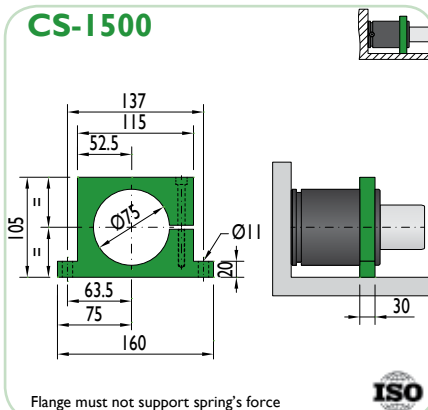
XS-1500



XC-1500

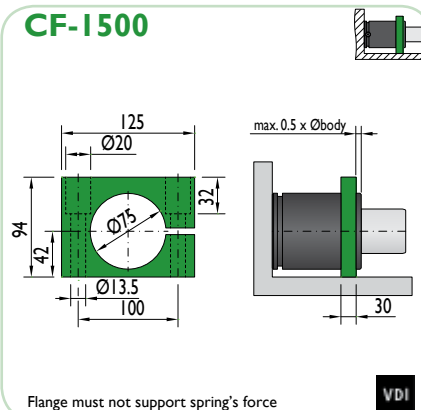


CS-1500



Flange must not support spring's force

CF-1500



Flange must not support spring's force