


Ordering example: 4 x TSC-1800-65

Order No.	S <sup>(1)</sup> mm	L mm	A mm	F <sub>0</sub> <sup>(2)</sup> daN (20°C, 150 bar)	F daN	 <sup>(3)</sup>	kg
TSC-1800-6	6	86	80	1800	2400	No	0.87
TSC-1800-10	10	100	90		2700	No	0.98
TSC-1800-16	16	126	110		2700	No	1.13
TSC-1800-25	25	155	130		2700	No	1.24
TSC-1800-32	32	182	150		2700	No	1.39
TSC-1800-40	40	210	170		2700	No	1.55
TSC-1800-50	50	240	190		2700	No	1.72
TSC-1800-65	65	291	226		2700	No	1.89

other strokes <sup>(1)</sup> under request

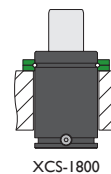
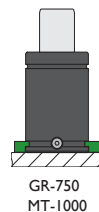
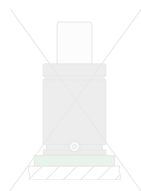
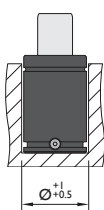
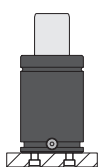
alternative forces <sup>(2)</sup> upon request

ESK <sup>(3)</sup> under request

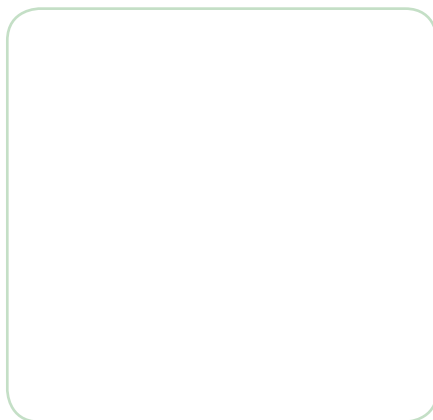
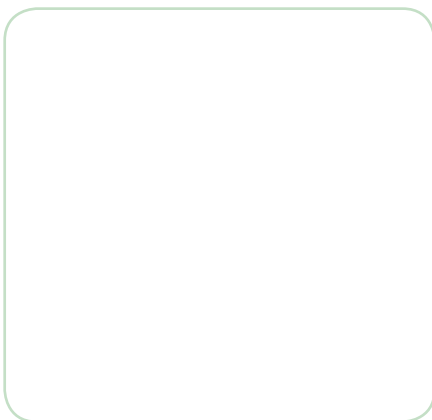
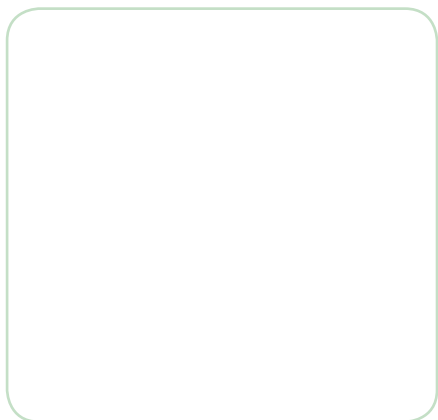


Pressure medium	N <sub>2</sub>	Working temperature	0-80°C	Min. security stroke	10%
Max. Charging pressure	150 bar	Temperature related force increase	+0.34%/°C	Repair Kit	KIT TSC-1800
Min. Charging pressure	25 bar	Max. working speed	0.5 m/s	Linkable	G1/8"

### Mounting possibilities



## Flanges



**GR-750**

12

Ø9

75

56.5

24

56.5

75

VDI

ISO

**MT-1000**

12.2

Ø13.5

75

56.5

24

56.5

75



**XCS-1800**

S

21

13

Ø body +0.10 / +0.3

Ø9

70

56.5

56.5

70

