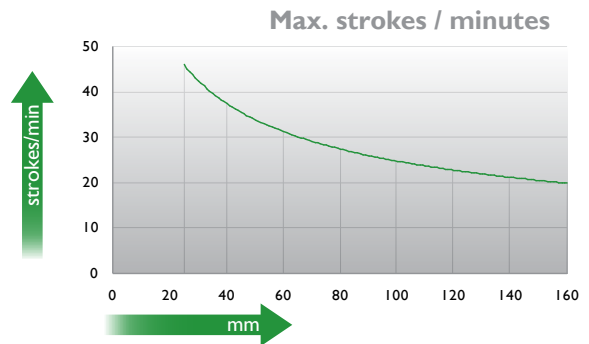
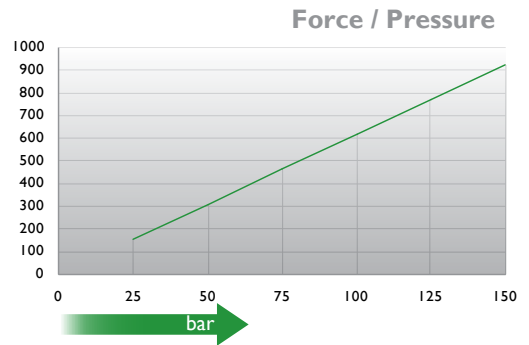
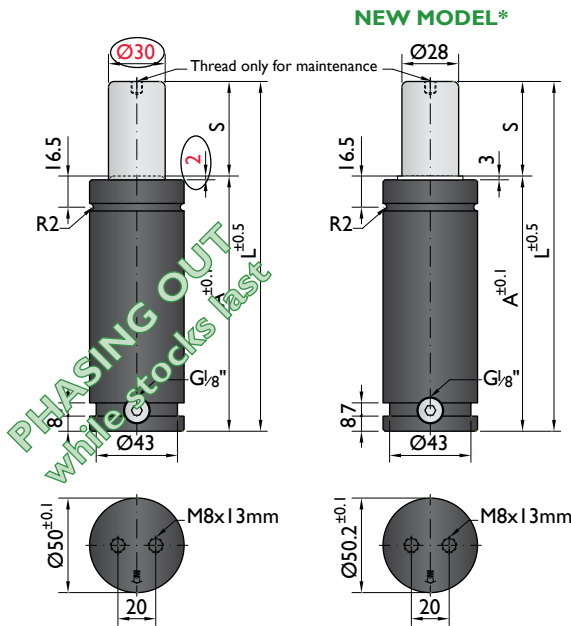




\*The new cylinder will be supplied when the stock runs out.



Ordering example: 4 x M-1000-125

Order No.	S <sup>(1)</sup> mm	L mm	A mm	F <sub>0</sub> <sup>(2)</sup> daN (20°C, 150 bar)	F daN		kg
M-1000-25	25	135	110	920	1300	No	1.18
M-1000-38	38	161	123		1400	No	1.30
M-1000-50	50	185	135		1400	No	1.43
M-1000-63	63	211	148		1500	No	1.55
M-1000-80	80	245	165		1500	Yes	1.92
M-1000-100	100	295	195		1500	Yes	2.17
M-1000-125	125	345	220		1600	Yes	2.40
M-1000-160	160	415	255		1600	Yes	2.79

other strokes <sup>(1)</sup> under request

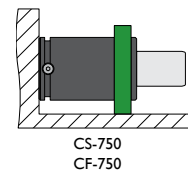
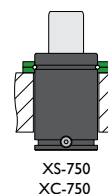
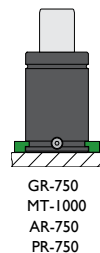
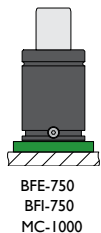
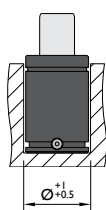
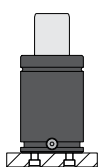
alternative forces <sup>(2)</sup> upon request

ESK available <sup>(3)</sup> for other strokes



Pressure medium	N <sub>2</sub>	Working temperature	0-80°C	Min. security stroke	10%
Max. Charging pressure	140 bar	Temperature related force increase	+0.34%/°C	Repair Kit	KIT M-1000
Min. Charging pressure	25 bar	Max. working speed	1.6 m/s	Linkable	G1/8"

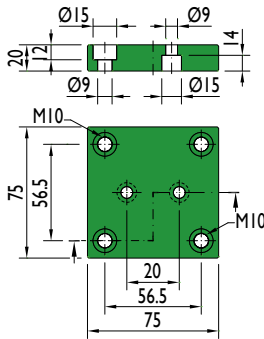
### Mounting possibilities



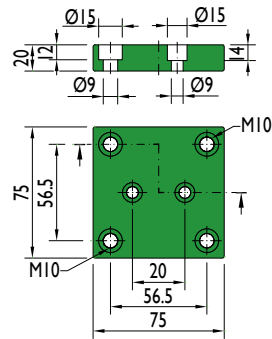
Flange must not support spring's force

## Flanges

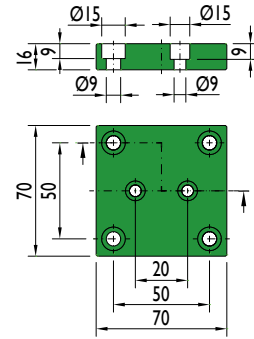
### BFE-750



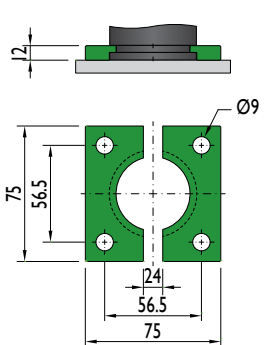
### BFI-750



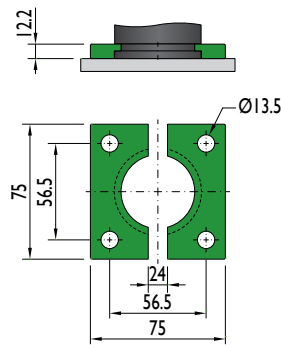
### MC-1000



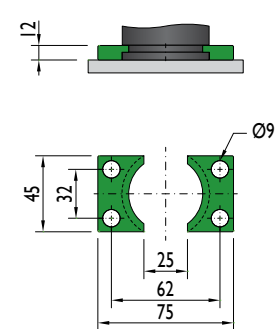
### GR-750



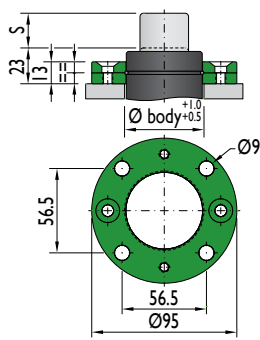
### MT-1000



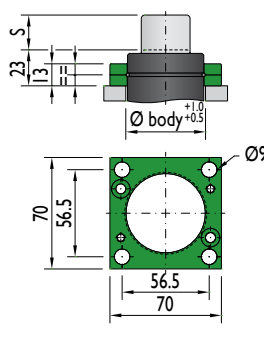
### AR-750



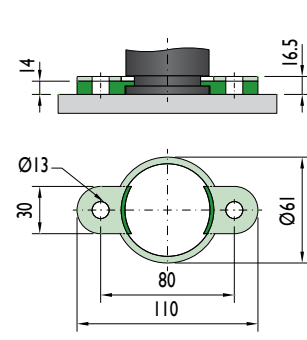
### XS-750



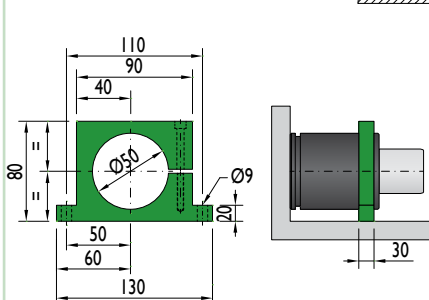
### XC-750



### PR-750

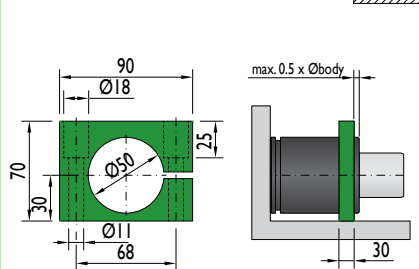


### CS-750



Flange must not support spring's force

### CF-750



Flange must not support spring's force

Special mounts available on  
[www.nitrogas.com](http://www.nitrogas.com)