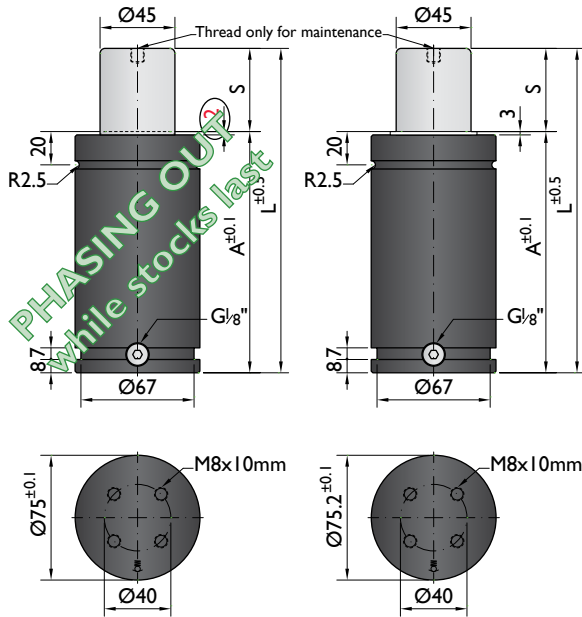


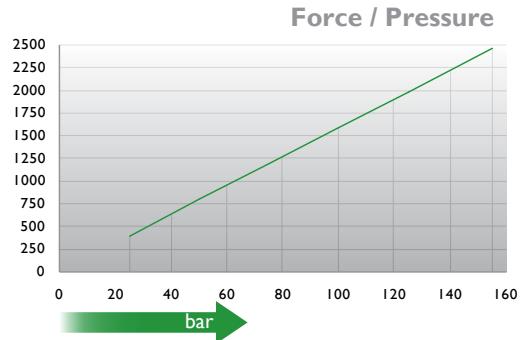


*The new cylinder will be supplied when the stock runs out.

NEW MODEL*

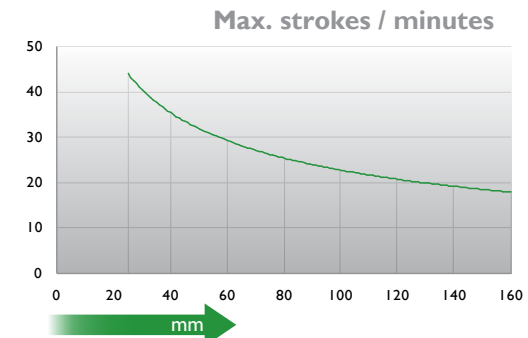


PHASING OUT
While stocks last



↑ daN

→ bar



↑ strokes/min

→ mm

Ordering example: 4 x M-2500-50

Order No.	S ⁽¹⁾ mm	L mm	A mm	F ₀ ⁽²⁾ daN	F daN	⁽³⁾	kg
M-2500-25	25	145	120	2500	3300	No	2.85
M-2500-38	38	171	133		3500	No	3.21
M-2500-50	50	195	145		3600	No	3.29
M-2500-63	63	221	158		3700	No	3.50
M-2500-80	80	255	175		3900	Yes	3.85
M-2500-100	100	300	200		3900	Yes	4.30
M-2500-125	125	350	225		3900	Yes	4.74
M-2500-160	160	425	265		4000	Yes	5.34

other strokes ⁽¹⁾ under request

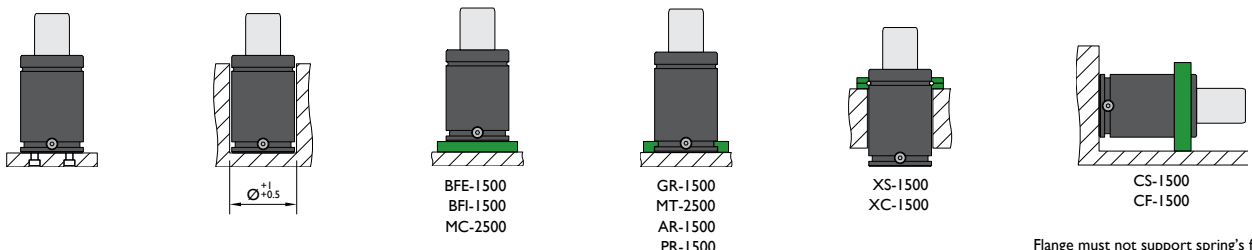
alternative forces ⁽²⁾ upon request

ESK available for other strokes ⁽³⁾



Pressure medium	N ₂	Working temperature	0-80°C	Min. security stroke	10%
Max. Charging pressure	155 bar	Temperature related force increase	+0.34%/°C	Repair Kit	KIT M-2500
Min. Charging pressure	25 bar	Max. working speed	1.6 m/s	Linkable	G1/8"

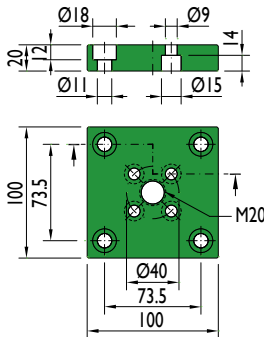
Mounting possibilities



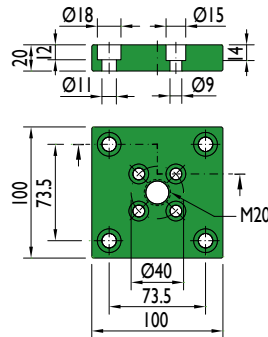
Flange must not support spring's force

Flanges

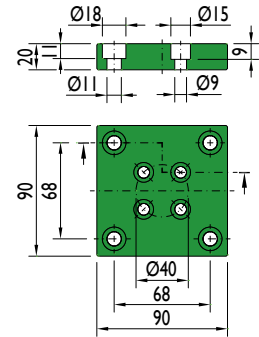
BFE-1500



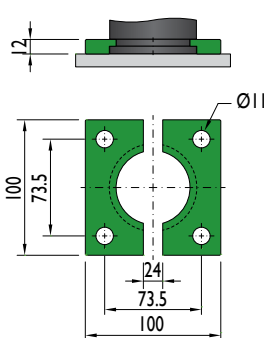
BFI-1500



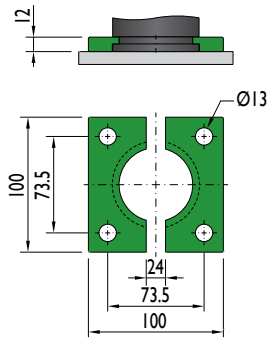
MC-2500



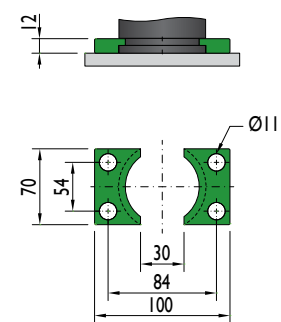
GR-1500



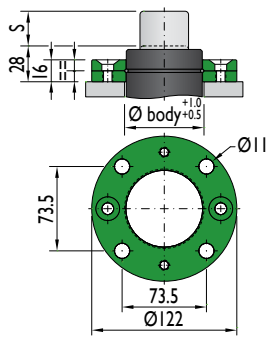
MT-2500



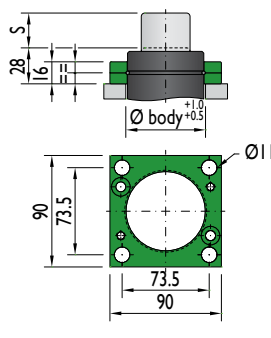
AR-1500



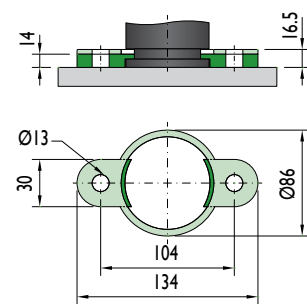
XS-1500



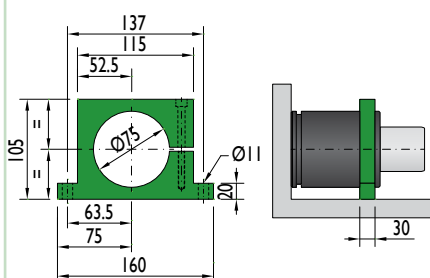
XC-1500



PR-1500

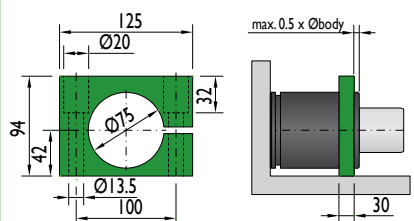


CS-1500



Flange must not support spring's force

CF-1500



Flange must not support spring's force

Special mounts available on
www.nitrogas.com