

Ordering example: 4 x M-500-125

Order No.	S ⁽¹⁾ mm	L mm	A mm	F ₀ ⁽²⁾ daN	F daN	kg
M-500-12	12	79	67	500 (20°C, 130 bar)	650	0.43
M-500-15	15	85	70		670	0.45
M-500-25	25	105	80		700	0.48
M-500-38	38	131	93		730	0.55
M-500-50	50	155	105		740	0.58
M-500-63	63	186	123		740	0.66
M-500-80	80	220	140		740	0.72
M-500-100	100	260	160		750	0.80
M-500-125	125	310	185		750	0.91

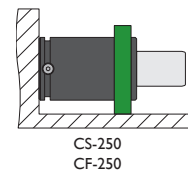
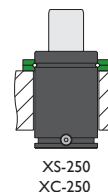
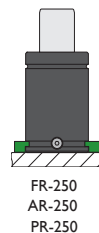
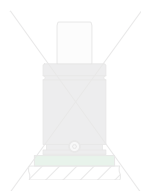
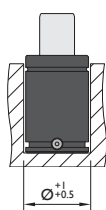
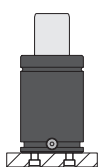
⁽¹⁾ other strokes under request

⁽²⁾ alternative forces upon request



Pressure medium	N ₂	Working temperature	0-80°C	Min. security stroke	10%
Max. Charging pressure	130 bar	Temperature related force increase	+0.34%/°C	Repair Kit	KIT M-500
Min. Charging pressure	25 bar	Max. working speed	1.6 m/s	Linkable	No

Mounting possibilities



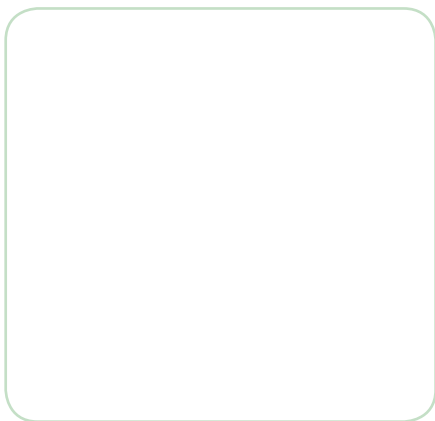
Flange must not support spring's force

Flanges



FR-250

ISO



AR-250

XS-250

ISO

XC-250

VDI

ISO

PR-250

CS-250

Flange must not support spring's force

CF-250

Flange must not support spring's force

VDI

Special mounts available on
www.nitrogas.com